

# PROPERTY OWNERS MEETING SEWER SERVICE RATES

**Emerald Lake Heights Sewer Maintenance District  
(District)**

*May 15, 2023*

*6:30 PM*

*Via Zoom*

**Department of Public Works**



# **ZOOM MEETING** **GENERAL HOUSEKEEPING**

**For those attending the meeting on the Zoom videoconference, during the public comment or question period, we will use the “raise hand” feature in order to organize any public comments or questions.**

**You may click the “raise hand” feature to raise your hand to speak. When you hear your name called, you will receive a request to unmute your microphone and you may begin speaking.**

**For those joining by phone, please press \*9 to raise your hand, and press \*6 to toggle mute/unmute.**

**DEPARTMENT OF PUBLIC WORKS**  
**STAFF IN ATTENDANCE TONIGHT**

**Ann M. Stillman, Director**

**Krzysztof Lisaj, Deputy Director, Engineering and Resource  
Protection**

**Mark Chow, Principal Civil Engineer, Utilities-Flood Control-  
Watershed Protection**

**Julie Young, Senior Civil Engineer, Utilities-Flood Control-  
Watershed Protection**

**Anna Mui, Associate Engineer, Utilities-Flood Control-  
Watershed Protection**



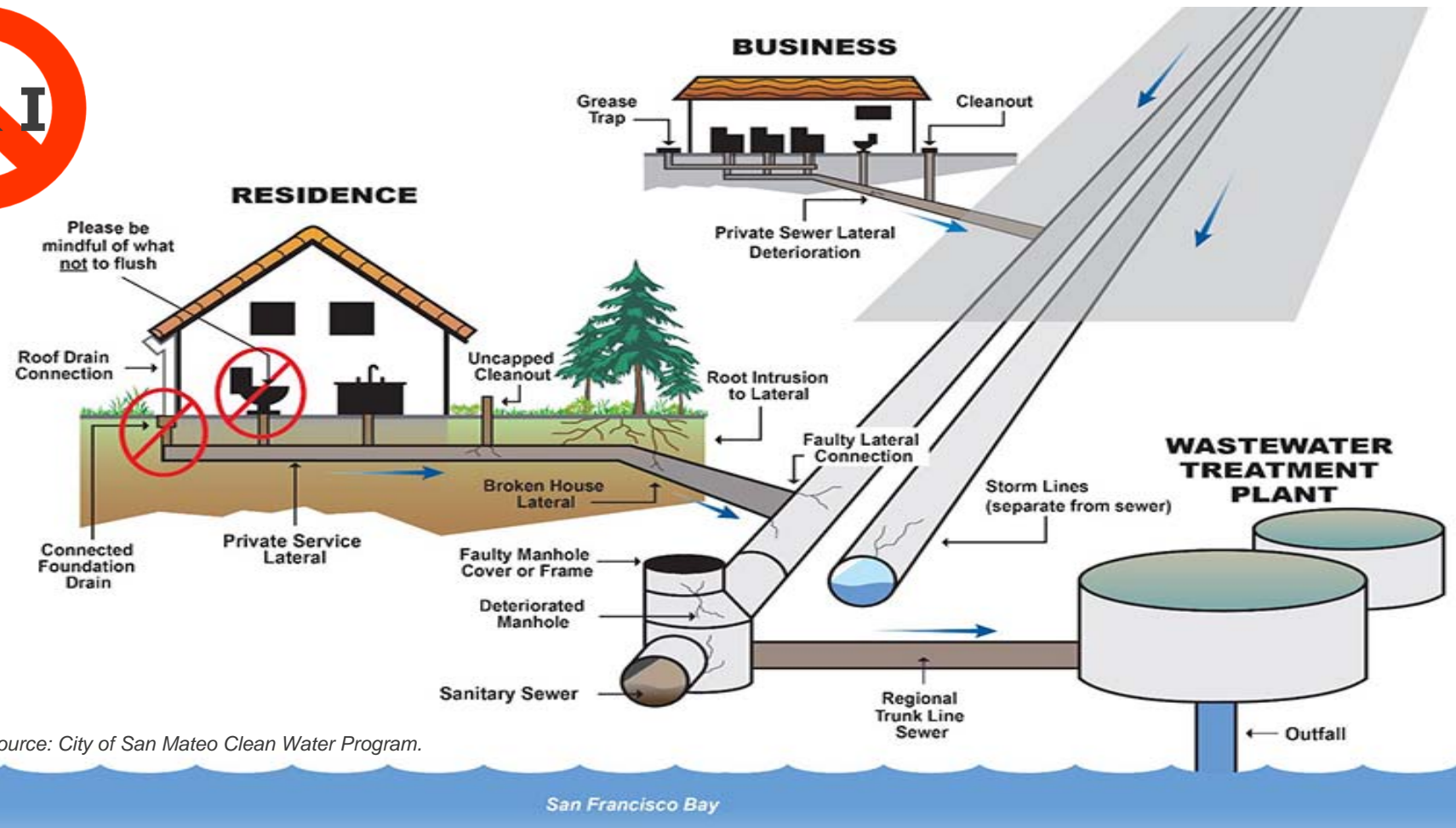
# AGENDA

- ***District Information***
- ***District Funding***
- ***Programs, Services and Compliance***
- ***Elements of the Sewer Service Rates***
  - ***In District Costs***
  - ***Out of District Costs***
- ***Proposed Rates for Consideration***
- ***Rate Setting Timeline***



# DISTRICT INFORMATION – HOW DOES A SEWER SYSTEM WORK?

*EACH DISTRICT RELIES ON DOWNSTREAM AGENCIES TO TRANSPORT SEWAGE COLLECTED BY THE DISTRICT TO THE TREATMENT PLANT*

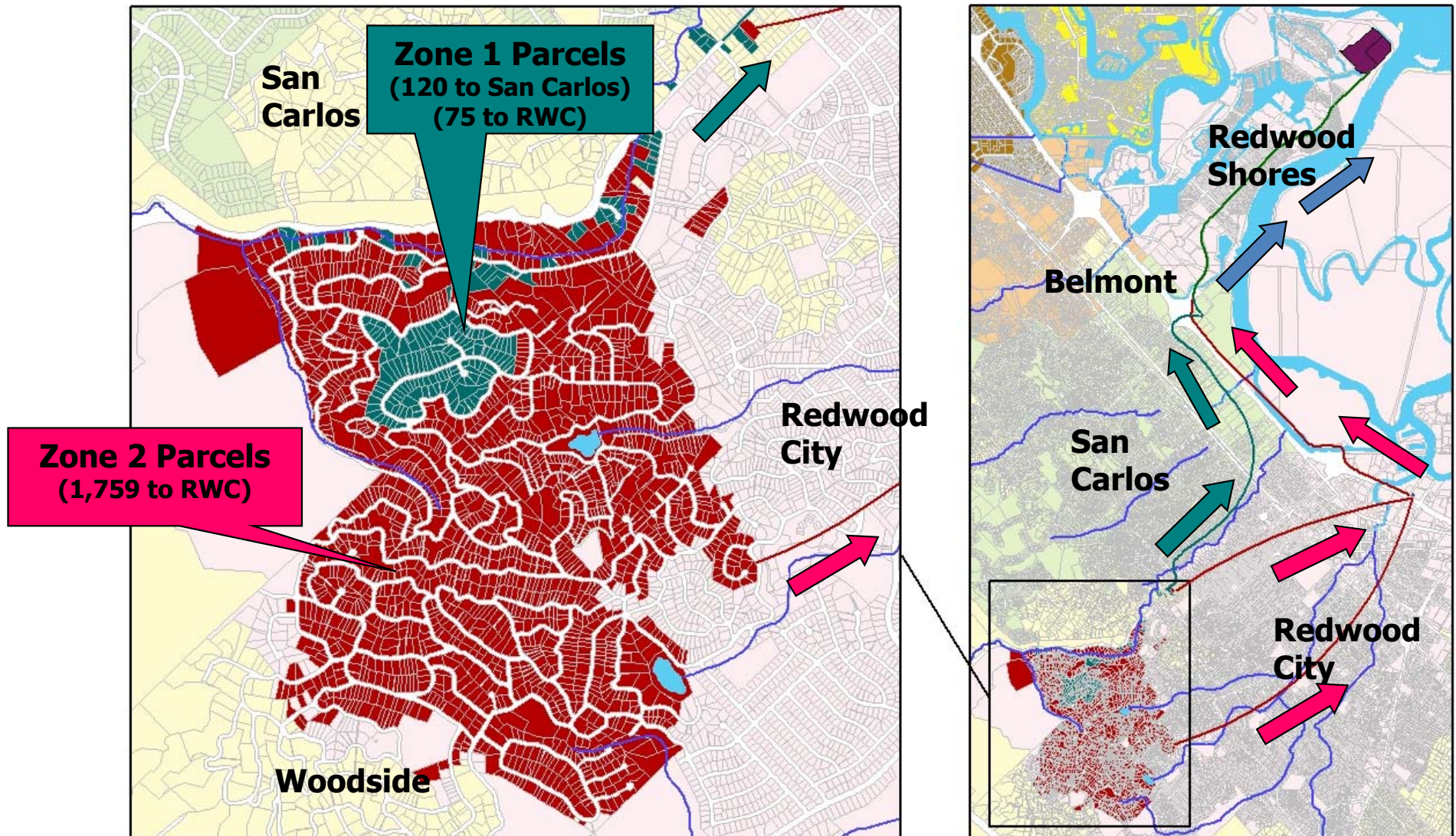


Source: City of San Mateo Clean Water Program.



# DISTRICT INFORMATION

**SEWAGE FLOWS THROUGH CITY OF SAN CARLOS & REDWOOD CITY TO THE SILICON VALLEY CLEAN WATER (SVCW) SEWAGE TREATMENT PLANT IN REDWOOD SHORES**



# DISTRICT SPECIFIC STATISTICS

District	Age (yrs) *	Number of Connections **	Equivalent Residential Units (ERU) **	Downstream Transport Agency	Treatment Facility
ELHSMD Zone 1	76	191	216	City of San Carlos/City of Redwood City	Silicon Valley Clean Water (SVCW)
ELHSMD Zone 2	40	1,485	1,536	City of Redwood City	

*\*Age based on District formation date*

*\*\* Based on 2022-23 Sewer Service Charge Report*

District	Miles of Pipe	Percentage in Easements	Percentage in Streets
ELHSMD Zone 1	2.3	64.5%	35.5%
ELHSMD Zone 2	27.6	37.4%	62.6%

# SEWER/SANITATION DISTRICTS IN COUNTY GOVERNMENT

## ***EACH DISTRICT IS AN INDEPENDENT ENTITY WITH ITS OWN SEPARATE BUDGET***

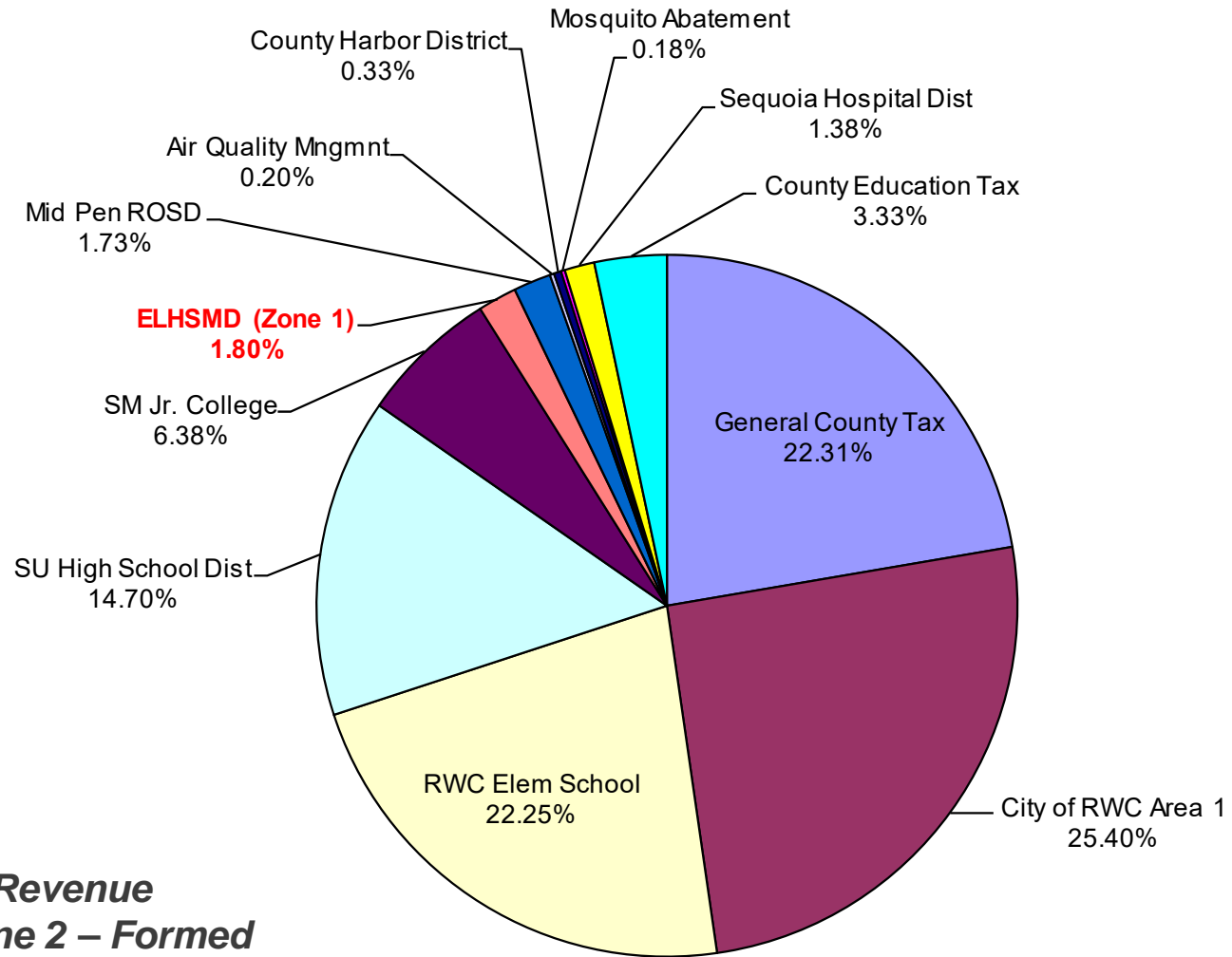
- Each District's Governing Board is the Board of Supervisors
- The District receives Sewer Service Charges and limited property taxes within the District boundaries to fund sewer service
- The Sewer Service Charges are a Fee For Service, Not a Tax
- The District collects Sewer Service Charges on the Tax Bill because it is least costly way to collect the fee
- No property tax revenue allocation in Zone 2





# WHERE DOES MY PROPERTY TAX MONEY GO?

## ELHSMD (Zone 1) Sample Property Tax Allocation (TRA 009-033)



**Note: No Property Tax Revenue Allocation for Zone 2 – Formed After Proposition 13**

Note: ELHSMD allocation of a portion (1.80%) of the property tax is \$28,383 for FY 2021-22.

# PROGRAMS, SERVICES AND COMPLIANCE

- Sanitary Sewer Overflow (SSO) Response, Reporting, Water Quality Monitoring, and Public Awareness Program
- Development and continuous updating of Sewer System Management Plan (SSMP)
- Continue to provide 24/7 emergency response to clear blockages in private laterals
- Purchased shared maintenance equipment since the last rate increase (CCTV main line camera and van, lateral camera, and air compressor)

# PROGRAMS, SERVICES AND COMPLIANCE

## *POLLUTION PREVENTION/PUBLIC AWARENESS PROGRAM*

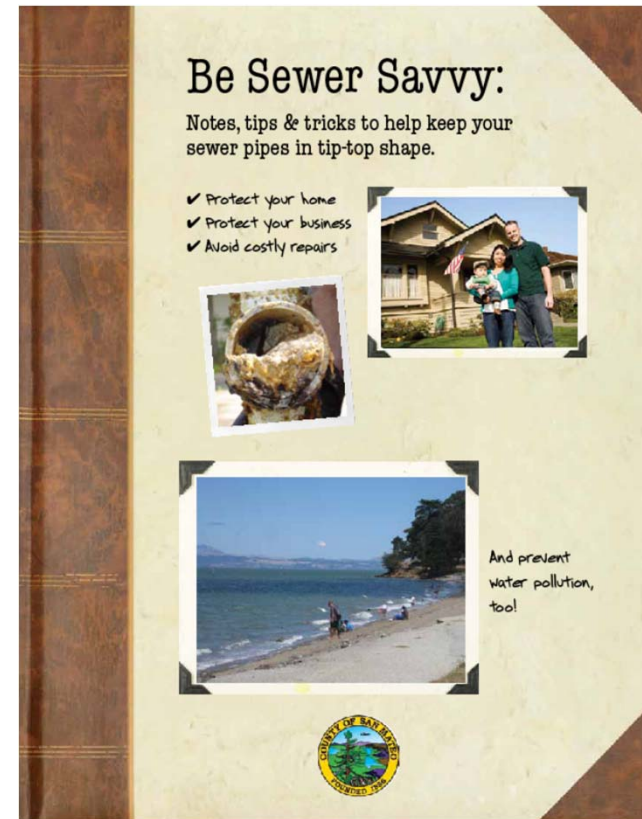


Flush only toilet paper, put trash in the trash can. Help prevent costly sewer problems and keep our environment safe from sanitary sewer backups and overflows!

Image sources: County of San Mateo and Central Contra Costa Sanitary District

# PROGRAMS, SERVICES AND COMPLIANCE

## **POLLUTION PREVENTION/PUBLIC AWARENESS PROGRAM**



Awareness brochures were developed and being distributed to customers during service calls and mailed to customers upstream of a sanitary sewer overflow. Copies are also available on website at <http://www.smcgov.org/sewers>



# PROGRAMS, SERVICES AND COMPLIANCE

## **SANITARY SEWER OVERFLOWS (SSO)**

District	2018	2019	2020	2021	2022	2023 (to date)
ELHSMD Zone 1	2	1	0	0	0	0
ELHSMD Zone 2	1	2	2	3	0	2

Over 1,970 feet of sewer pipes were replaced in ELHSMD Zone 2 in 2019.

Preventative maintenance on the Districts sewer mains is being performed at frequencies ranging from 3 to 36 months, depending on conditions.

Manholes with known root problems are inspected and cleaned every 6 months.



**The toilet is only meant  
to flush the three P's—  
pee, poop and paper.**  
*toilet*



# DISTRICT EXPENSES

## ***IN DISTRICT COSTS:***

- ***Operation and Maintenance***
- ***Regulation Compliance***
- ***District Projects***



## ***OUT OF DISTRICT COSTS:***

- ***Sewage Transport and Treatment***
- ***Downstream Agency Capital Improvement Projects***



# **ELEMENTS OF THE SEWER SERVICE RATES** **– CAPITAL IMPROVEMENT PROJECTS (CIP)**

## ***HIGH PRIORITY CIPs IDENTIFIED IN EACH DISTRICT THROUGH MASTER PLANS AND CONDITION ASSESSMENTS***

- *Improvements are recommended based on the following:*
  - *Lack of capacity in pipe*
  - *Excessive maintenance costs*
  - *Structural defects in pipe*
  
- *Portions of your Sewer Service Charges collected are used to pay for improvements.*

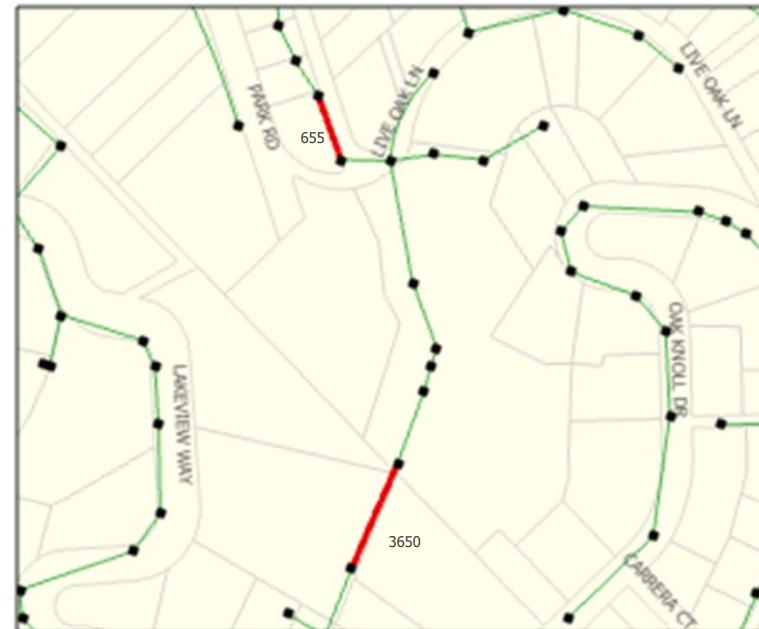
# ELEMENTS OF THE SEWER SERVICE RATES – FUTURE PROJECTS AND ESTIMATED COSTS

655 Park Rd (mud slide)

\$700,000

3650 Oak Knoll Dr (mud slide)

\$1,750,000



# **ELEMENTS OF THE SEWER SERVICE RATES** **– OUT OF DISTRICT COSTS**

## ***SEWAGE TRANSPORT, TREATMENT, AND DISPOSAL***

*District has Agreements with the City of San Carlos and the City of Redwood City for sewage transport through their respective pipes with treatment and disposal at the SVCW*

- ***Agreement with the City of San Carlos***
  - ***Requires payment of 85% of City rate***
  - ***City increased 4.5% average annual rate increase for FYs 2019-23. City did not increase rate for FY 2023-2024, however, future rate increases are expected***
  - ***Based on number of connections***

# **ELEMENTS OF THE SEWER SERVICE RATES** **– OUT OF DISTRICT COSTS**

## ***SEWAGE TRANSPORT, TREATMENT, AND DISPOSAL***

- ***Agreement with the City of Redwood City***
  - ***Requires payment of 100% of City rate***
  - ***City increased 4.5% average annual rate increase for FYs 2019-22. City did not increase rate for FY 2022-23 or 2023-2024, however, future rate increases are expected***
  - ***Based on number of connections, with 4 non-residential properties which are based on water consumption***



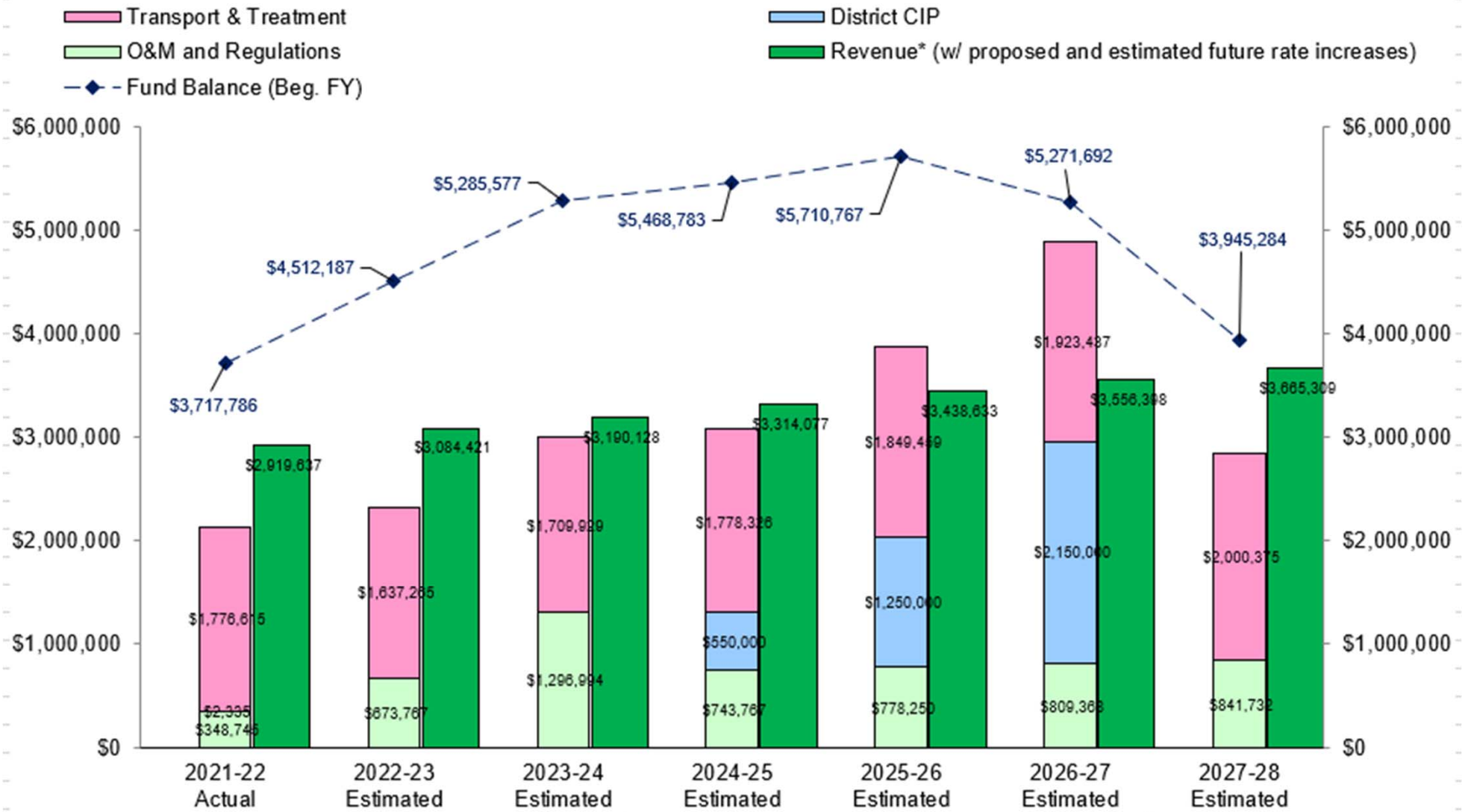
# ELEMENTS OF THE SEWER SERVICE RATES – OUT OF DISTRICT COSTS

## ***WHAT AFFECTS THE AMOUNT THE DISTRICT PAYS?***

- ***Sewer Service Rates established by San Carlos and Redwood City***
  
- ***Capital Improvement Projects at the SVCW:***
  - ***Capital improvements will replace equipment which have reached the end of their useful lives***
  
  - ***SVCW has spent \$620 million thru April 2022 (over 14 years)***
  
  - ***In April 2022, SVCW estimates \$330 million in CIP expenditures over the next decade***
  
  - ***SVCW will be charging the member agencies (Redwood City, San Carlos, Belmont, and West Bay Sanitary District) for cost of the capital improvements***

# ELEMENTS OF THE SEWER SERVICE RATES

## Emerald Lake Heights SMD Expenditure & Revenue Comparison



# PROPOSED RATES

	Sewer Service Rates (\$/Year Per Equivalent Residential Unit)					
	Current Rate FY 2022-23	Proposed Rates				
		FY 2023-24	FY 2024-25	FY 2025-26	FY 2026-27	FY 2027-28
<b>Emerald Lake Heights SMD</b>	\$1,715	\$1,785 <i>(+ \$70/yr or \$5.83/mo)</i>	\$1,855 <i>(+ \$70/yr or \$5.83/mo)</i>	\$1,925 <i>(+ \$70/yr or \$5.83/mo)</i>	\$1,995 <i>(+ \$70/yr or \$5.83/mo)</i>	\$2,065 <i>(+ \$70/yr or \$5.83/mo)</i>

# RATE SETTING TIMELINE

<b>Key Dates</b>	<b>Actions</b>
May 23, 2023	Introduce Ordinance with proposed sewer service rate and set Public Hearing for July 25, 2023.
June 5, 2023	Send Proposition 218 notice (45 days prior to public hearing) to property owners with proposed rates.
July 25, 2023	Hold public hearing, adopt Ordinance setting rates, and adopt FY 2023-24 Sewer Service Charges Report based on the adopted rates.

**Emergency Response**  
**24 Hours a Day, 7 Days a Week**

Mainline (Blockage)

Customer Sewer Laterals

**Call (650) 363-4100 to Report**  
**Sewer Overflows**





***THANK YOU!***

***Please e-mail comments and questions to:***  
***[sewers@smcgov.org](mailto:sewers@smcgov.org)***

***Information is available on our website at:***  
***<http://www.smcgov.org/sewers>***



**The toilet is only meant  
to flush the three P's—  
pee, poop and paper.**  
toilet

**COUNTY OF SAN MATEO**

