



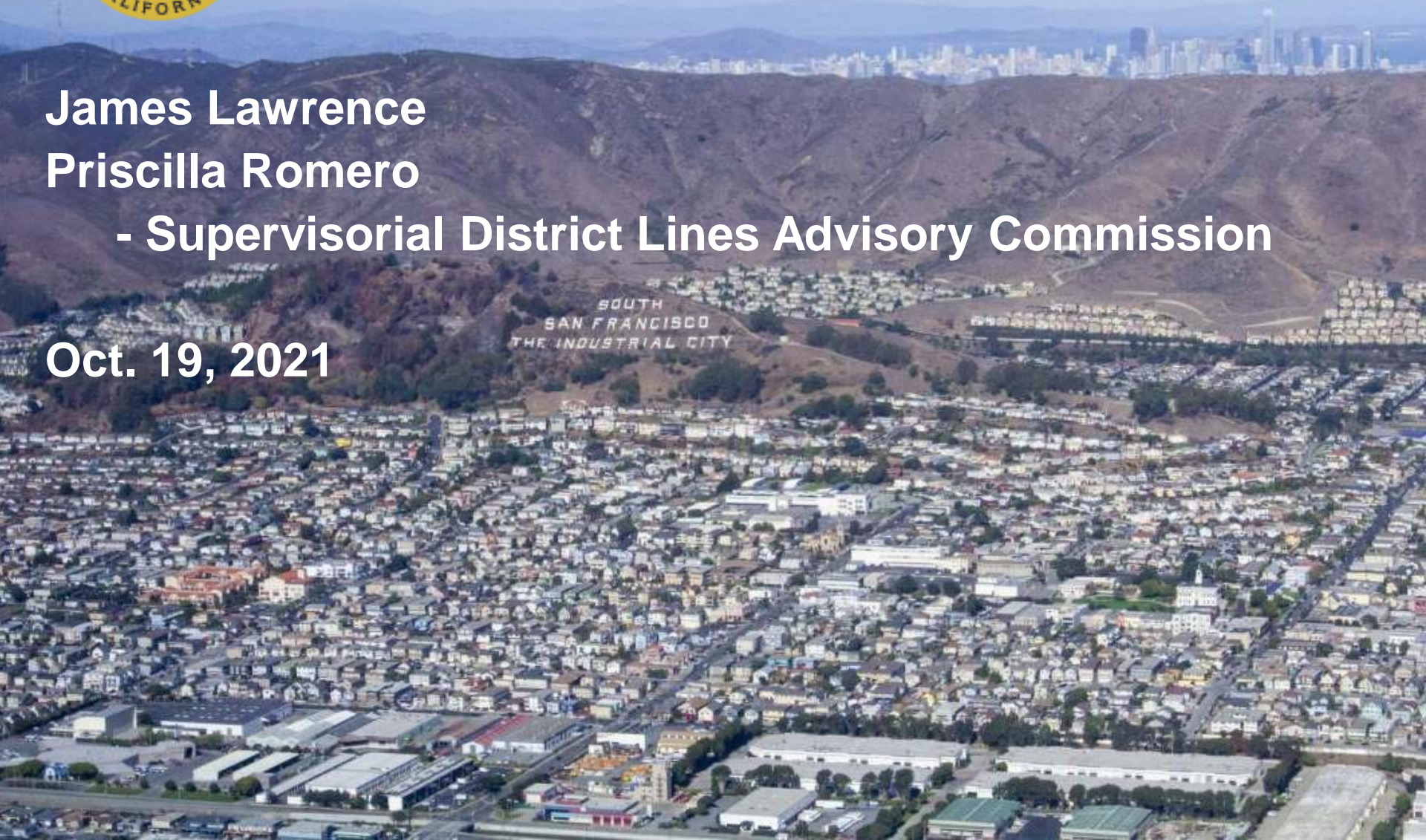
COUNTY OF SAN MATEO

DISTRICT LINES ADVISORY COMMISSION

James Lawrence
Priscilla Romero

- Supervisorial District Lines Advisory Commission

Oct. 19, 2021



LEGAL CRITERIA: FEDERAL LAW

POPULATION EQUALITY

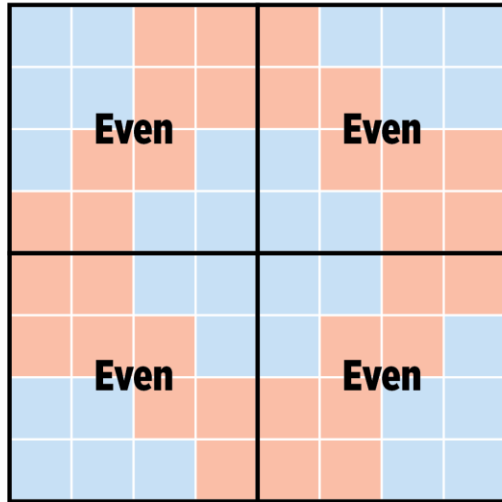
- Overriding criterion remains population equality (total deviation less than 10% presumptively constitutional)

VOTING RIGHTS ACT

- No racial gerrymandering

Two Ways to Gerrymander: Packing and Cracking

Even in an area with an even distribution of voters along party lines, politicians can redraw boundaries to create favorable conditions for the party in power. Azavea, a Philadelphia-based geographic software company, created this example to show how it can be done.

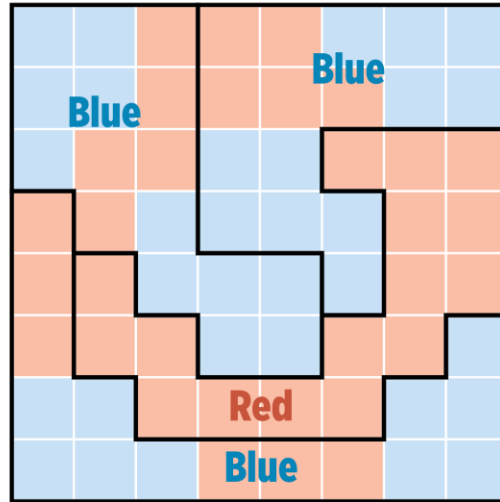


Even distribution

2 red, 2 blue

In the example above, there are an even number of red and blue voters to be split among four districts. Drawing four squares creates districts that split red and blue voters equally.

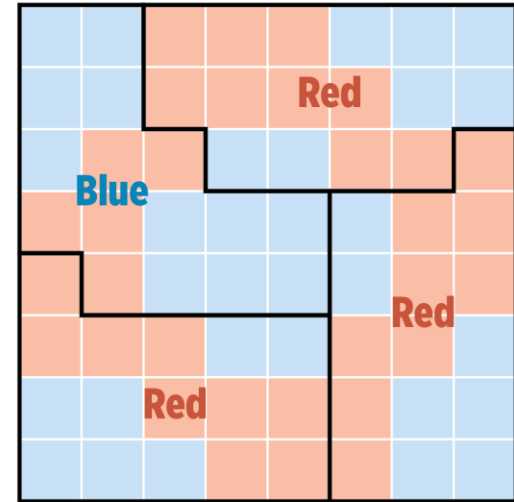
SOURCE: Azavea



Packing

1 red, 3 blue

Packing concentrates members of a party in a single district, allowing the other party to win the others. Here, one district is packed entirely with red voters. Blue voters have a majority in the three others.



Cracking

3 red, 1 blue

Cracking splits a group among multiple districts to dilute their voting power. Above, blue voters are divided in such a way that red voters have a slim majority in three of the districts.

Staff Graphic

LEGAL CRITERIA: NEW STATE LAW REQUIREMENTS

First, districts must be geographically contiguous

Second, local neighborhoods and communities of interest must be respected in a manner that minimizes division

Third, the geographic integrity of a city or census designated place must be respected in a manner that minimizes division

Fourth, district boundaries should be easily identifiable and understandable by residents; a

Fifth, districts must be drawn to encourage geographical compactness

COMMUNITIES OF INTEREST

A population that shares common social or economic interests that should be included within a single district for purposes of its effective and fair representation

Do not include relationships with political parties, incumbents, or political candidates

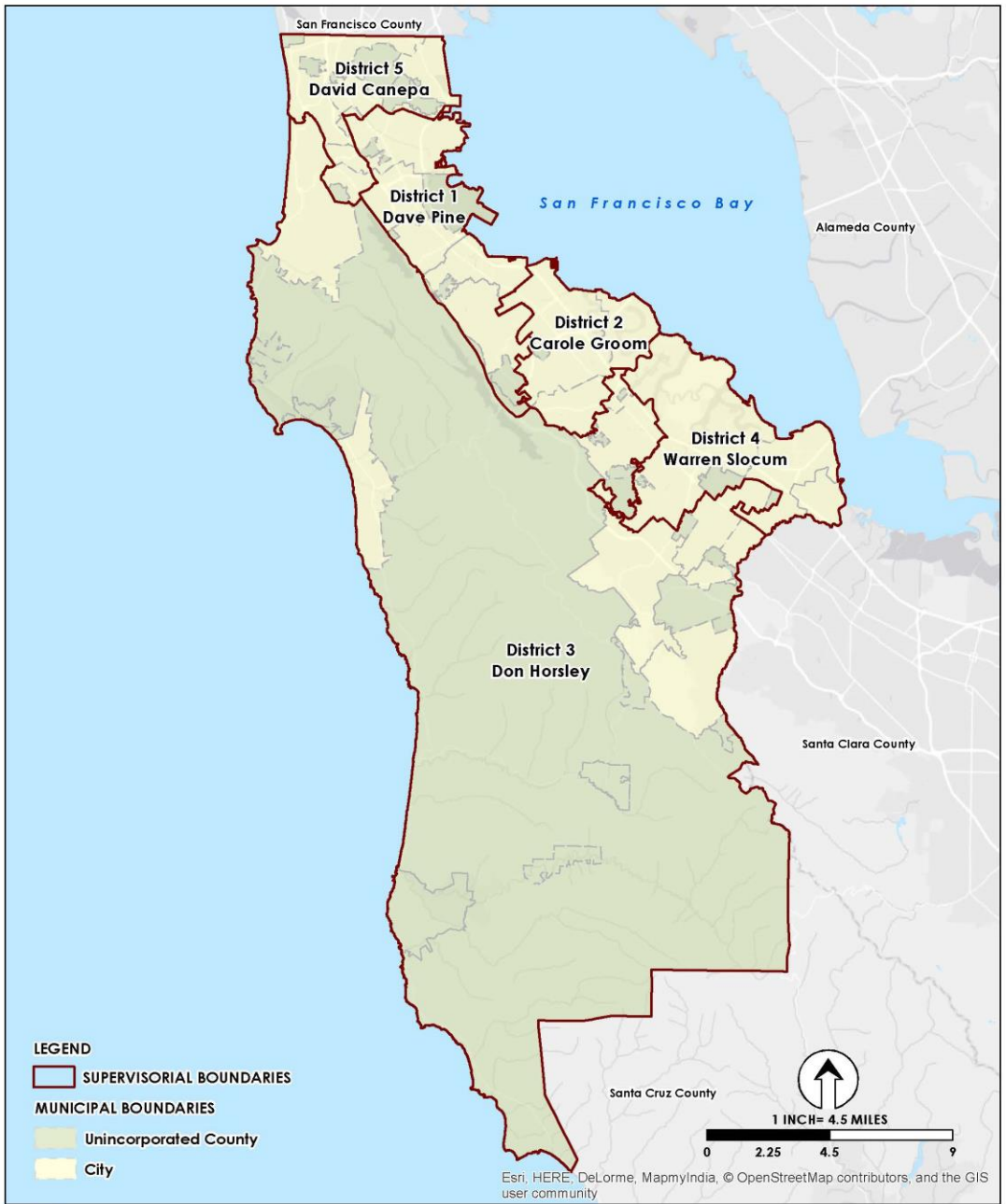


SUPERVISORIAL DISTRICTS

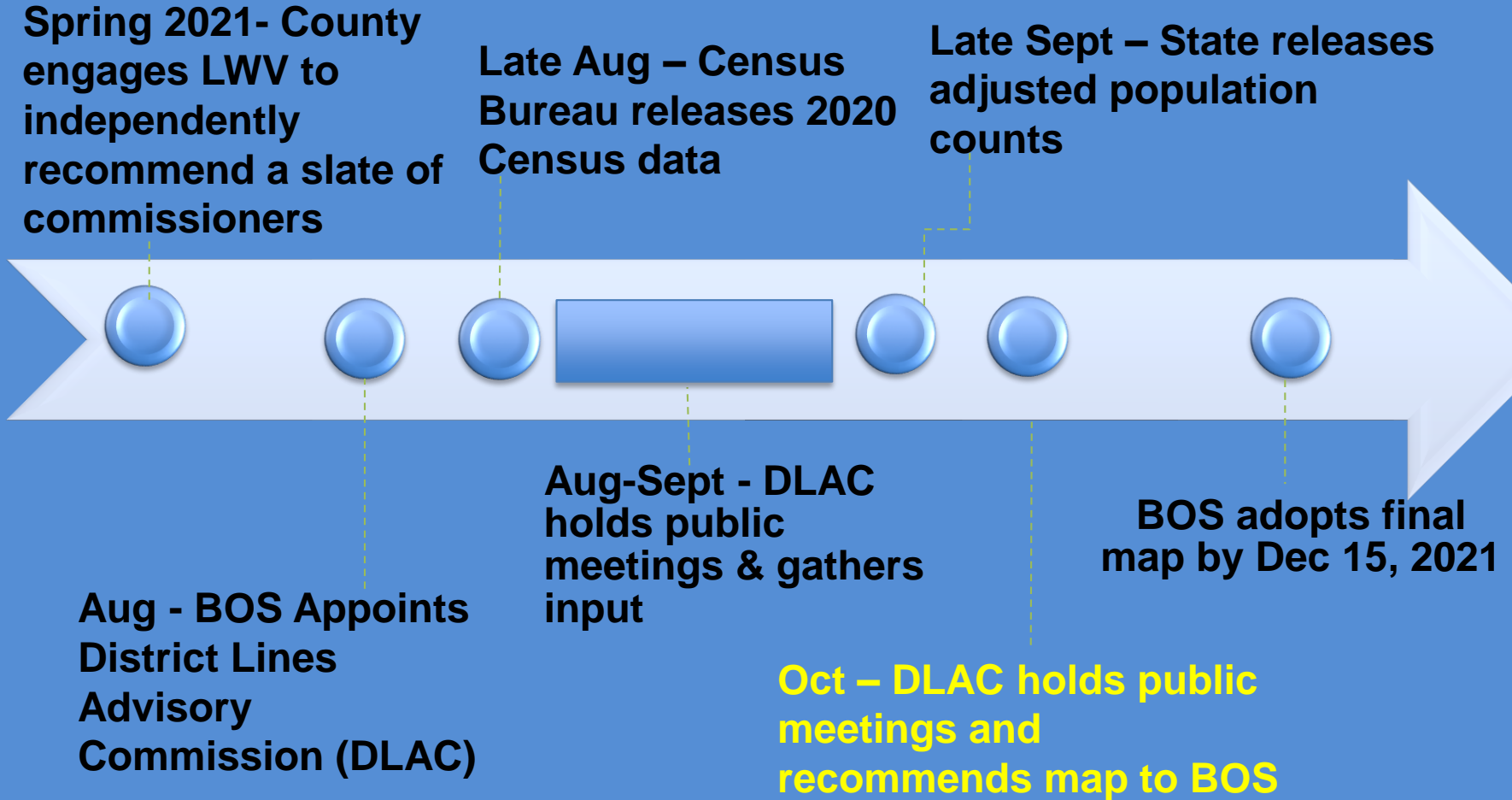
C O U N T Y O F S A N M A T E O

District	Total Pop.	Deviation from ideal
1	151,639	-1,444
2	162,113	+9,030
3	154,804	+1,721
4	149,515	-3,568
5	147,346	-5,737
Total	765,417	14,767

Each of the five districts must contain about 153,083 people.



Redistricting Timeline





COUNTY OF SAN MATEO

DISTRICT LINES ADVISORY COMMISSION

How to participate:

- Participate in public meeting (see schedule at <http://smcdistrictlines.org>)
- Take the Communities of Interest Survey on the website
- Comment on social media
Post a message on Facebook or Twitter using the hashtag #SmcDistrictLines
- Send an email
Give us your thoughts at DistrictLines@smcgov.org



COUNTY_{OF} **SAN MATEO**

