

CIVICS 101



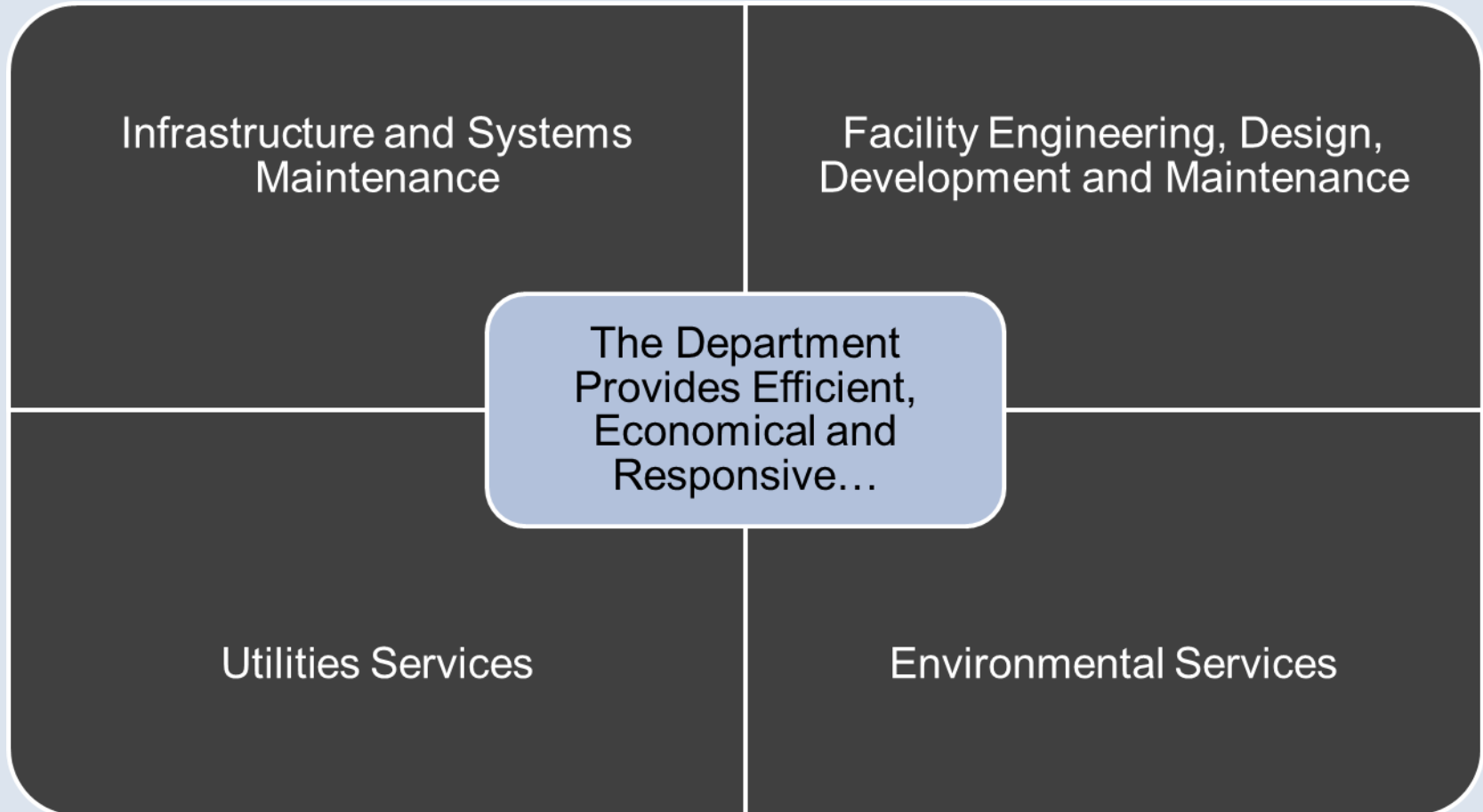
**DEPARTMENT OF
PUBLIC WORKS**

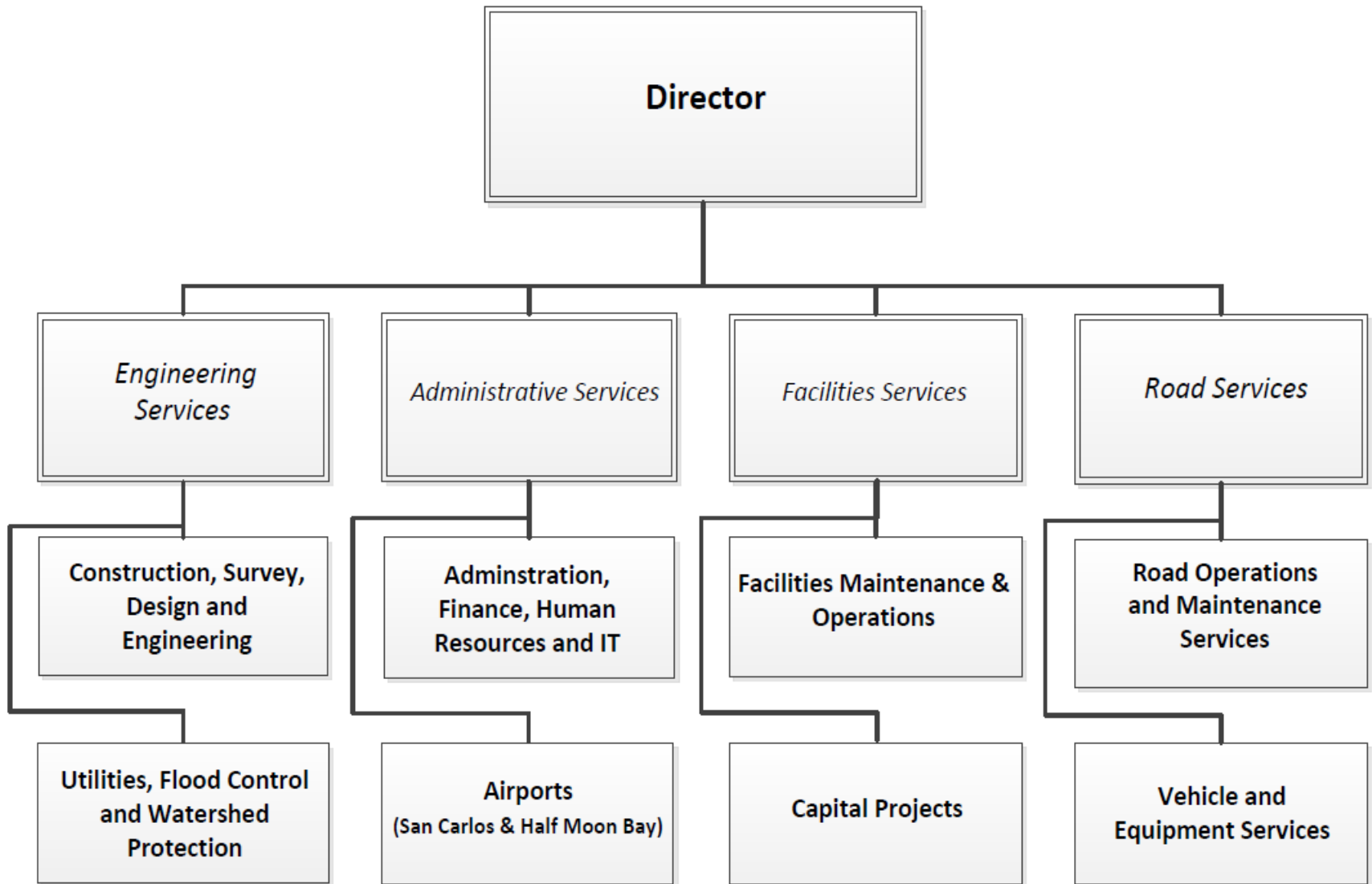
Ann M. Stillman, Interim Director

COUNTY OF SAN MATEO



Mission Statement





Road Services

Roadway Repairs

315 miles of County
maintained roads

Stormwater
Facilities

Vegetation Along
Roadways

Emergency Storm
Response

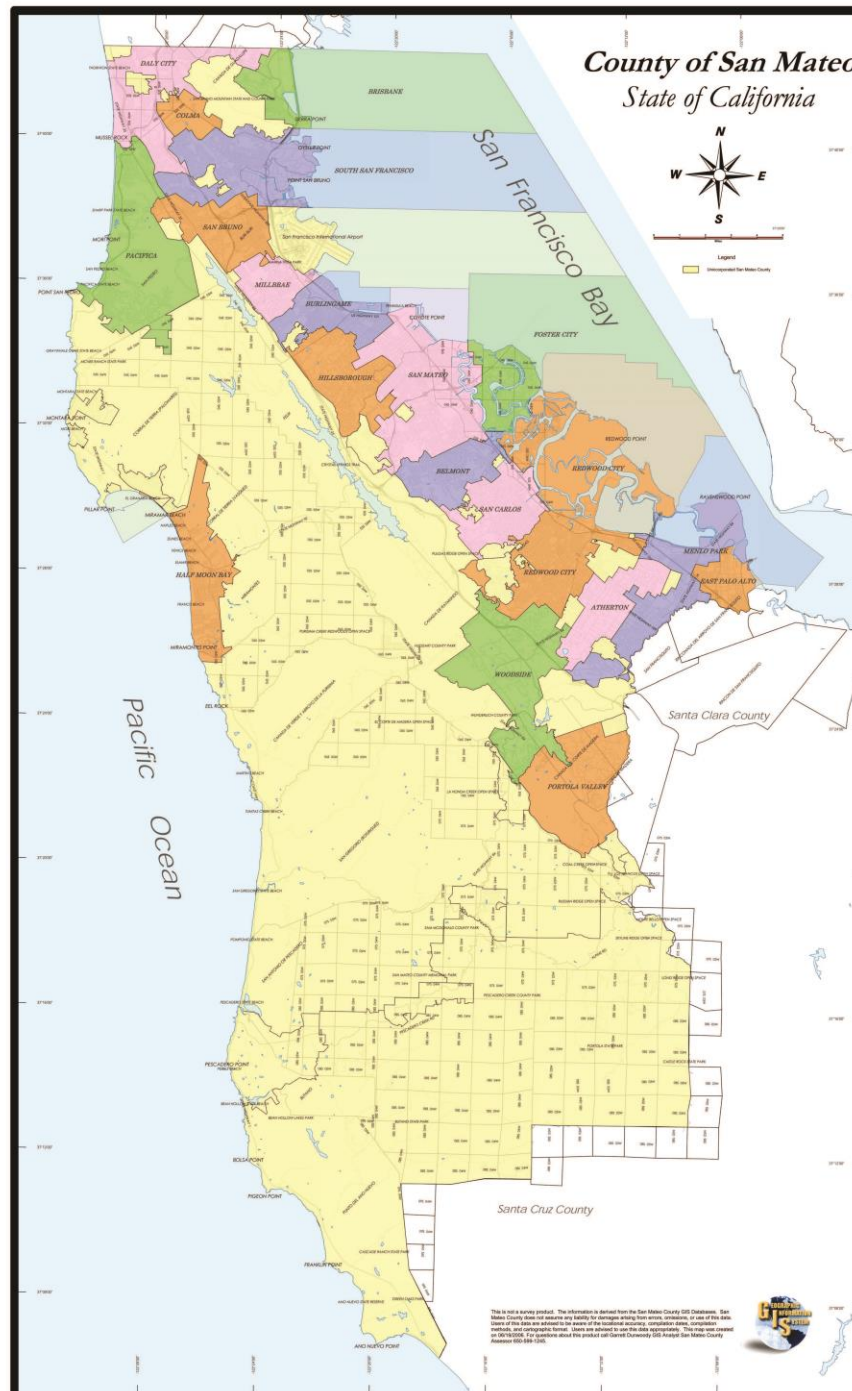
Traffic Control Devices

Right of Way
Management

Motorpool Services

Vehicle and Equipment
Acquisition and
Replacement

Vehicle and Equipment
Preventative
Maintenance and Repair
Work





Administrative Services & Airports

**Finance, Accounting
and Contract
Management**

**Budget and
Performance
Management**

**Policy and Program
Development**

**Payroll and Human
Resources
Management**

**Safety and Risk
Management**

**Information
Technology
Management**

**2 General Aviation
Airports
Over 500 Acres**

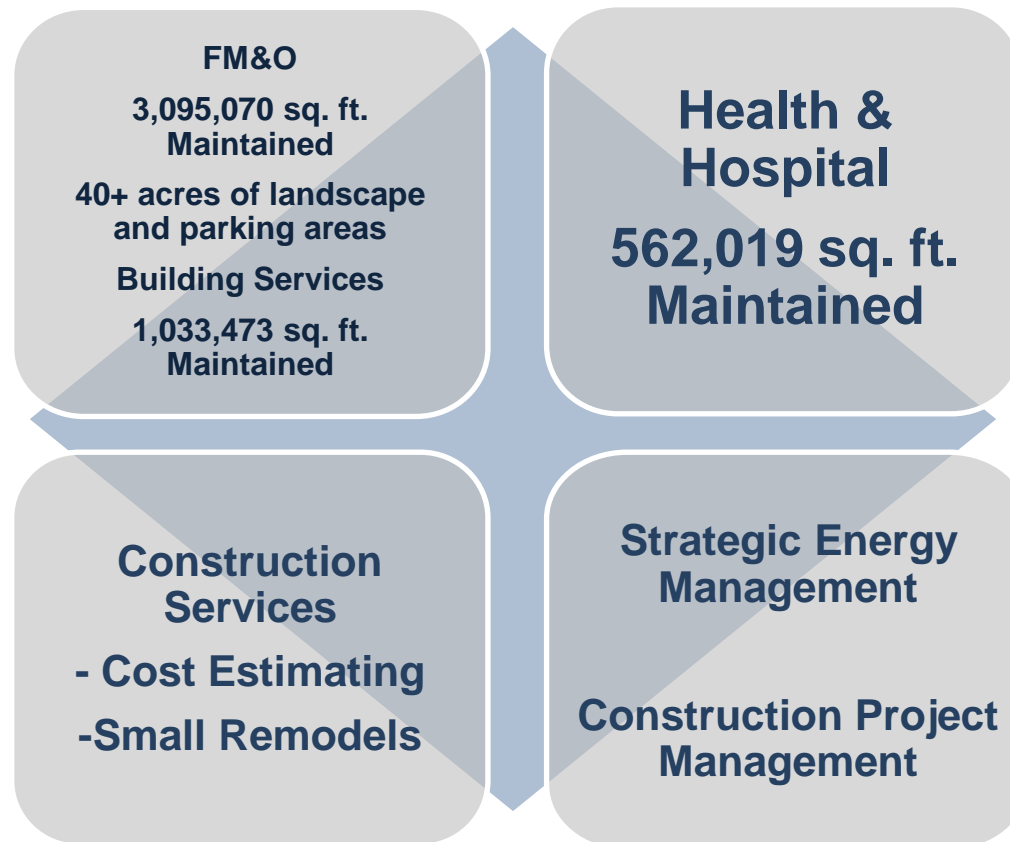
**San Carlos and
Half Moon Bay**

San Carlos and Half Moon Bay Airports

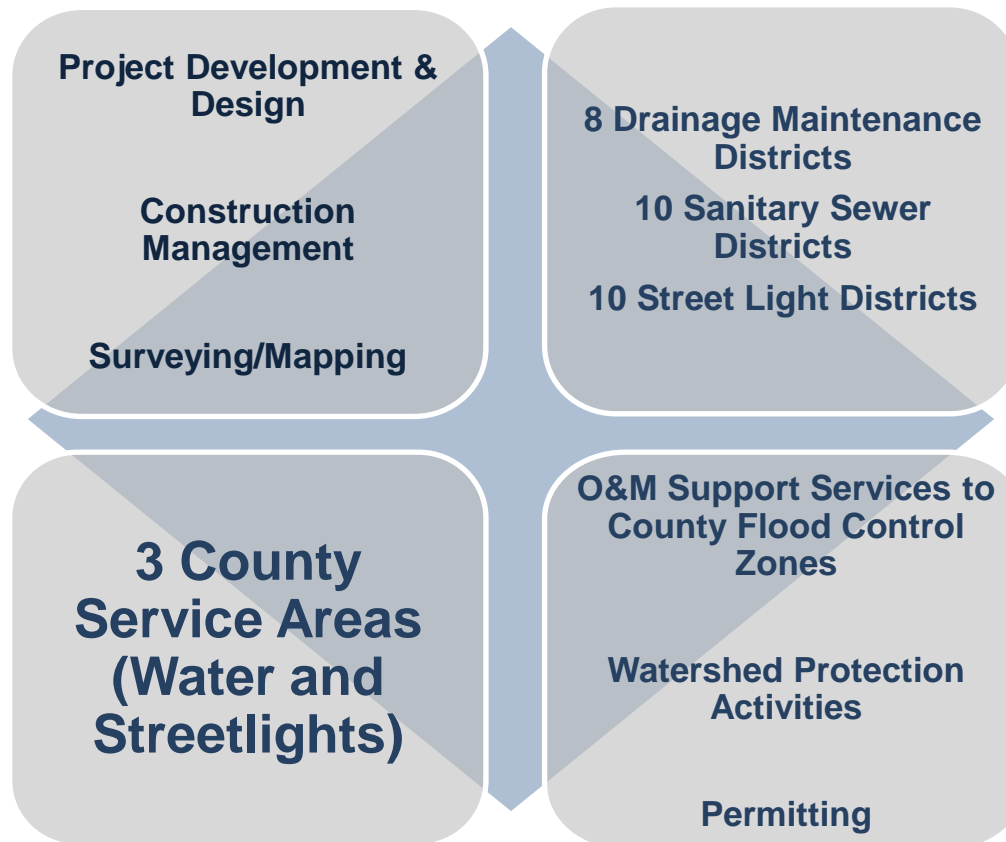
- Videos of pilots flying approved voluntary noise abatement procedures are provided on the Airports' website
- Airports' vector system automates noise complaint data with flight tracks
- Leasing HMB Airport land to farmers using in-kind services



Facilities, Maintenance & Operations



Engineering and Resource Protection



Project Sampling

Middlefield Road Improvement Project – In Construction



Project Description:

Utility Undergrounding MacArthur Avenue to 5th Avenue, Sanitary Sewer Replacement Douglas Avenue to 6th Avenue, and Roadway Improvements from 5th Avenue to Pacific Avenue

Target Completion Date:

Construction: May 2021 through December 2022

COUNTY OF SAN MATEO



Middlefield Road Improvement Project – In Construction

- New lane configuration: 1 lane in each direction
- Widened Sidewalks
- Street Lights
- Buffered Bike Lanes
- High Visibility Crosswalks
- Rectangular Rapid Flash Beacon (RRFB)
- Traffic Signals
- Street Trees
- Bike Racks, Benches
- Trash Receptacles
- Undergrounding Overhead Utilities
- Green Infrastructure/stormwater treatment features



Mirada Road Pedestrian Bridge Replacement – Miramar Area – In Design



Project Description:

Complete design to replace pedestrian/bicycle bridge over Arroyo de en Medio and reinforce the banks adjacent to the bridge

Target Completion Date:

Design and Permitting – End of 2022

East Palo Alto Center Improvements – In Design



Project Description:

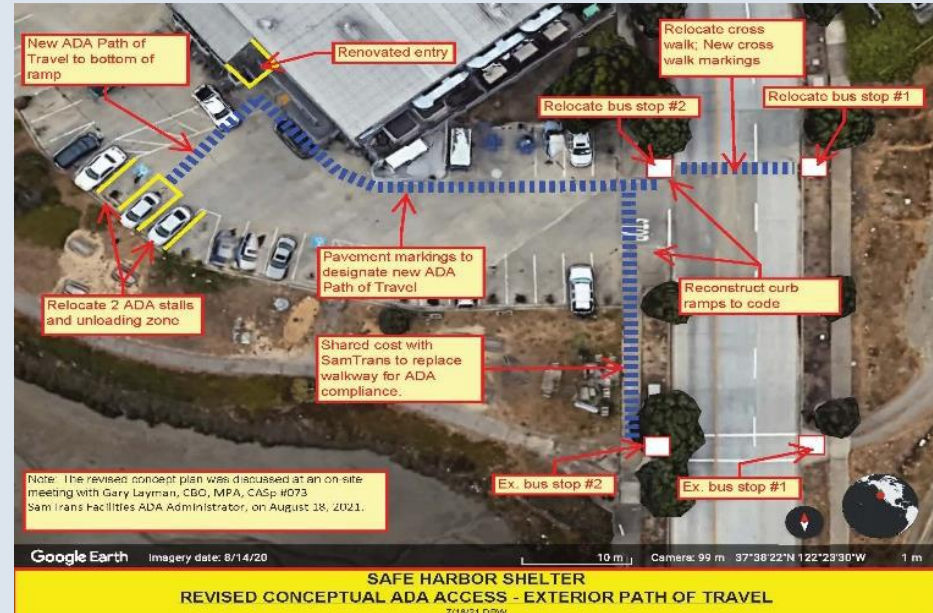
The building is in need of rehabilitation, especially the mechanical systems - Heating, Ventilation, and Air Conditioning system upgrade.

Radio Shop – In Construction



Safe Harbor Expansion – Completed

ADA Improvements – In Design



Project Description:

Programming for this project replaces the current HVAC system and adds 16 new beds. Office space reconfigured with a new reception area, laundry room and elevator.

Target Completion Date:

ADA design – December 2021

County Office Building Exterior Improvements – Completed



Scaffolding on building exterior



Completed Project

Hall of Justice South Entrance Façade - Completed



Before Project



Completed Project

Princeton Yard Aboveground Fuel Tank - Completed



Improvements at Loyola Avenue – Completed in 2020

Sewer Pipe Replacement & Road Reconstruction



Scenic Drive Home Demolition and Road Repair Project – La Honda area – In Construction



Scenic Drive closed due to 2017
Winter Ground Failure Disaster



Two damaged houses being
demolished as a result of 2017 Winter
Storm Disaster

Scenic Drive Home Demolition and Road Repair Project – In Construction



Final grading for where home was demolished



Drilling of piers for retaining wall

Scenic Drive Home Demolition and Road Repair Project – In Construction



Drilling of tie-back anchors for retaining wall



Concrete waller completed with tie-backs

Sanitary Sewer Rehabilitation in Burlingame Hills Sewer Maintenance District - Completed



Butano Creek Channel Stabilization and Habitat Enhancement at Cloverdale Road Bridge Project - Completed



Butano Creek Pre-Construction Near Bridge Supports



Butano Creek Pre-Construction – Concrete Sack Bank Protection

Butano Creek Channel Stabilization and Habitat Enhancement at Cloverdale Road Bridge Project - Completed



Grading underneath in preparation of rock placement



Rock being delivered for placement

Butano Creek Channel Stabilization and Habitat Enhancement at Cloverdale Road Bridge Project - Completed



Post Construction Butano Creek



Post Construction looking at
Cloverdale Bridge

Coyote Point Eastern Promenade Project – In Construction



Coyote Point Eastern Promenade
Demolition and initial grading



Coyote Point Eastern Promenade
Grading along beach

Coyote Point Eastern Promenade Project – In Construction



Coyote Point Eastern Promenade
Beach Construction



Coyote Point Eastern Promenade
Concrete seawall

Coyote Point Eastern Promenade Project – In Construction



Coyote Point Eastern Promenade
Restroom Installation



Coyote Point Eastern Promenade
Restroom Installation

County Parkwide Paving Project - Completed



Memorial Park – paving of Park roads



Memorial Park – ADA Parking and access to Restroom

Memorial Park Wastewater Treatment Plant Replacement Project - Completed



Old Wastewater Treatment Plant



New Wastewater Treatment Plant

Memorial Park Wastewater Treatment Plant Replacement Project – Completed



Memorial Park Wastewater Treatment Plant
Excavation



Memorial Park Wastewater Treatment Plant
Exterior Wall Construction

Cost Measures Around the Department

In FY 2020-21:

- \$7,332/mile to maintain a road
- \$59,176/lane mile sealed
- \$1,095,987/lane mile reconstructed
- \$6,359/mile of sewer main for scheduled maintenance
- \$2,832/non-patrol vehicle for maintenance
- \$5,343/patrol vehicle for maintenance

Our Employees

- Employee engagement and recognition events
 - Annual recognition awards event
 - Public Works Week events
 - Wellness and team-building activities
 - Disaster service worker event
 - Custodial appreciation event
- COVID education, outreach, support





C.A.R.E. for Customers

- Emergency response efforts (COVID, civil unrest, wildfire)
- New County homeless shelters
- Winter debris flow monitoring and response
- Facilities' safety and accessibility improvements

The Next Two Years

FY 2021-23 Budget Overview- Public Works

	FY 2021-22 Adopted	FY 2022-23 Preliminary Recommended
Total Sources	\$246,286,706	\$204,964,745
Total Requirements	\$246,286,706	\$204,964,745

FY 2021-23 Budget Overview-Capital Projects

	FY 2021-22 Adopted	FY 2022-23 Preliminary Recommended
Total Sources	\$117,238,397	\$26,281,608
Total Requirements	\$117,238,397	\$26,281,608

FY 2021-23 Continuing Projects

- Continuation of funding for existing projects (a partial listing)
 - Mirada Road Pedestrian Bridge Replacement Project
 - Safe Harbor Shelter Expansion
 - Complete repairs and rehabilitation to
 - East Palo Alto City Hall Improvements
 - New Radio Shop Building at Chestnut and Grant Yard
 - CSA-7 La Honda Water System, Infrastructure Replacement
 - Multi-Modal Trail parallel to Hwy 1 on the Coast
 - Scenic Drive Repair and Reconstruction

FY 2021-23 New Projects

- New Projects (a partial listing)
 - ADA Elections Registration compliance at Tower Road
 - SMMC Building Management System Upgrade
 - Maguire Correctional Facility Alternative Energy System Study
 - Hall of Justice Chiller Replacement
 - 2022 Pavement Preservation
 - Capital Improvement Projects



FY 2021-23 Department Priorities

Municipal Regional Stormwater Permit compliance

Hiring of Project Managers to improve execution of capital project program

Inter-departmental collaboration on projects and initiatives utilizing grants and other funding sources

Conversion of gas-powered vehicles to electric vehicles

Health & Safety Improvements

Facilities Maintenance Projects

Strategic Energy Master Plan

ADA Improvements

Spending 50% of Capital Project budget annually

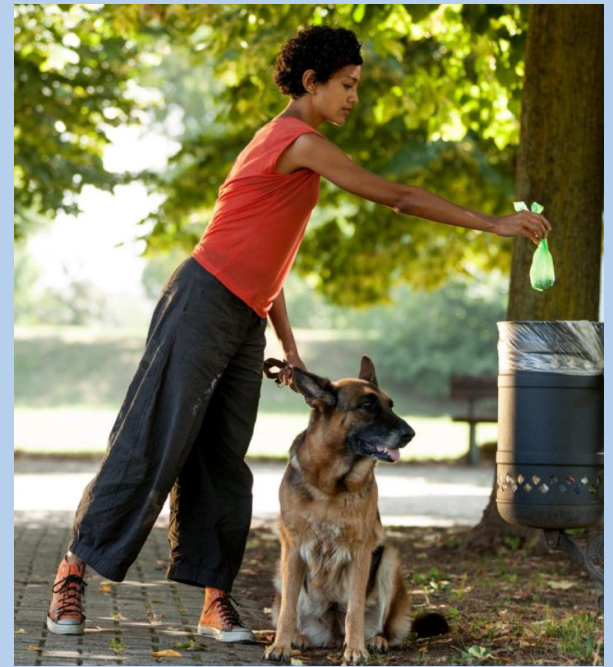
**And Few Things You Should Know
and Share with Friends, Family,
and Co-workers...**

Preventing Stormwater Pollution

Pet Care

Did you know that one gram of dog waste contains 23 million fecal bacteria?

Pet waste that doesn't get picked up can ultimately end up in our waterways.



Litter Prevention

Over time, small amounts of litter on our roads, sidewalks, and trails build up and contribute to a big water quality problem.



Whether at home, in your community, or place of work—there are many ways YOU can help prevent stormwater pollution!

For more information: <https://www.flowstobay.org/preventing-stormwater-pollution>

COUNTY OF SAN MATEO



Be
Sewer
Smart!

AVOID SEWER BACKUPS AND OVERFLOWS BY KEEPING TRASH OUT OF YOUR TOILET

Did you know?
Cleaning wipes, baby wipes and facial wipes are one of the biggest causes for contributions to sewer back-ups in the County of San Mateo Sewer Districts. That's right- even if the package says "flushable" or "disposable", they should NEVER be flushed. They belong in the trash.

Flush ONLY toilet paper. Put trash in the trash can.
For more information please visit our website at www.smcgeis.org/sewers or call us at 650-343-4100.



**The toilet is only meant
to flush the three P's—
pee, poop and paper.**
toilet

Questions?

Department of Public Works Website:
publicworks.smcgov.org