

# Collaborative Community Outcomes

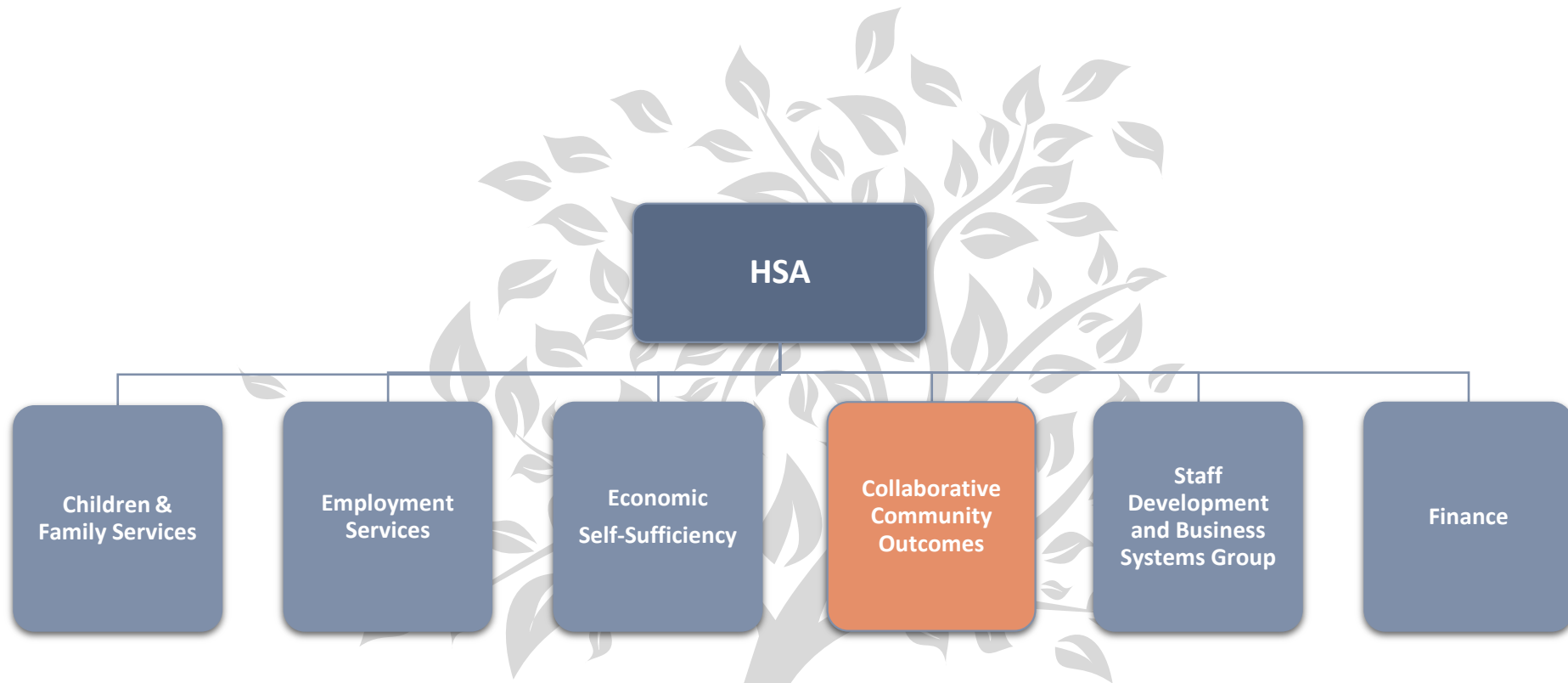


**COUNTY** OF SAN MATEO  
HUMAN SERVICES AGENCY



# Human Services Agency Branches

---



**Selina Toy Lee**

*Director of Collaborative Community Outcomes*

1 Davis Drive

Belmont, CA 94002

Email: [SToy-Lee@smcgov.org](mailto:SToy-Lee@smcgov.org)

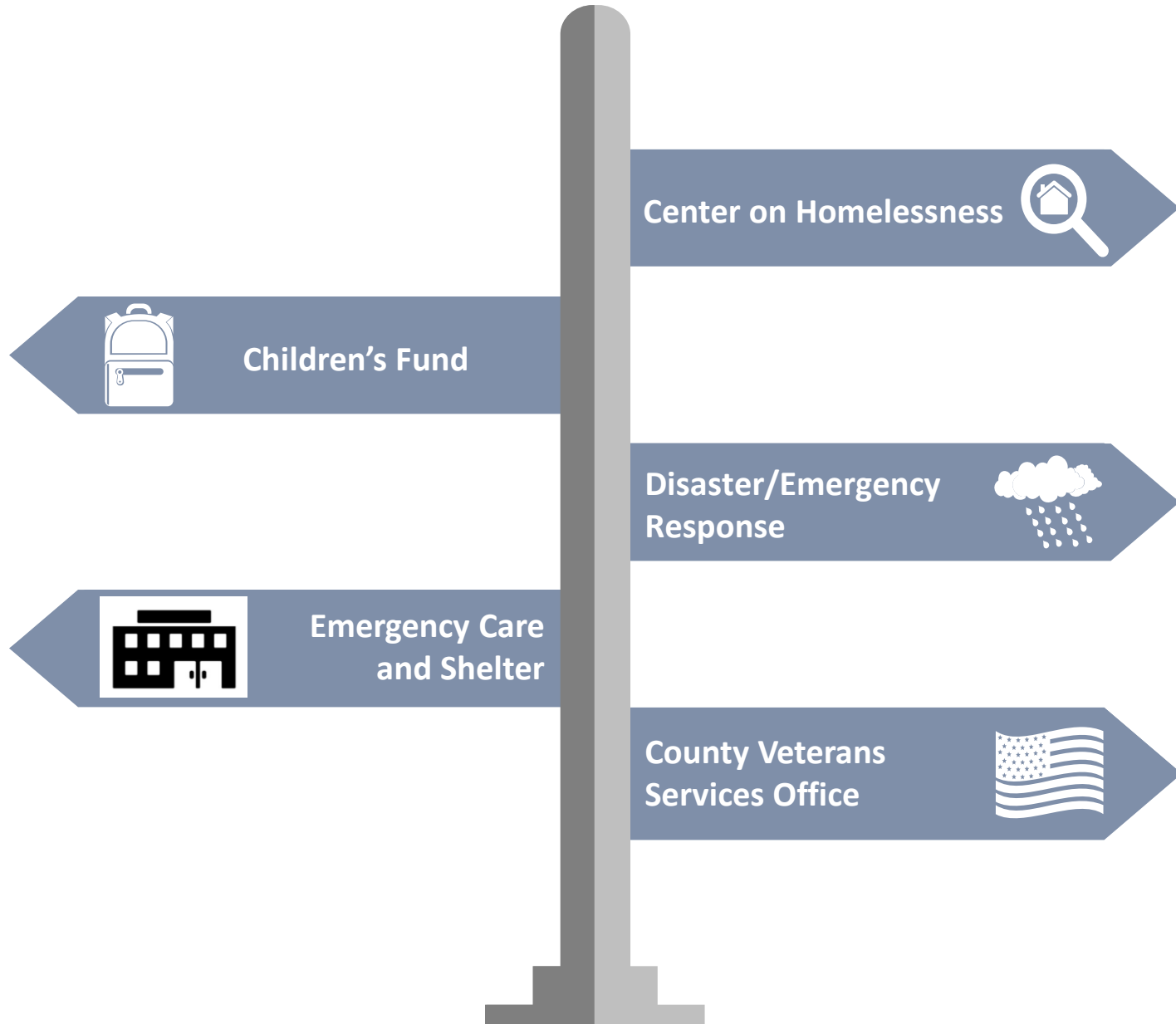
# CCO Branch Mission

---

The Human Services Agency's **Collaborative Community Outcomes** (CCO) Branch creates strategic partnerships with external organizations towards the goals of ending homelessness, promoting veterans benefits, and providing a safety net for the County's vulnerable residents.

# CCO Program and Services

---



# Children's Fund

---



The **Children's Fund** is dedicated to improving the quality of life for low income children and foster youth by providing goods and services, to eligible children, that are not available through public funds.



# Children's Fund

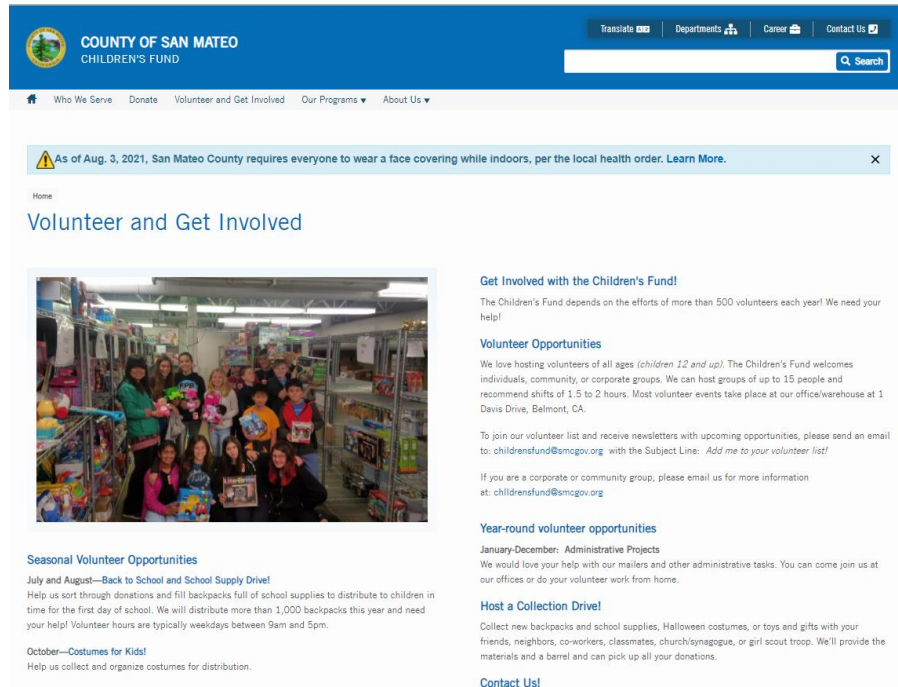
---

| Year Round Programs   | Seasonal Programs  |
|---|--|
| <ul style="list-style-type: none"><li>• Bundles for Babies</li><li>• Emergency diapers and wipes</li><li>• Maureen Borland Orthodontics</li><li>• Ad Hoc Requests</li></ul> | <ul style="list-style-type: none"><li>• Share the Love</li><li>• Backpacks for Kids</li><li>• Halloween Costumes for Kids</li><li>• Holiday Gifts for Children</li></ul> |

# Children's Fund

## How to get involved – Volunteer!

The Children's Fund relies on the help and support of volunteers throughout the community. Will slowly have opportunities when safe to do so.



The screenshot shows the website for the County of San Mateo Children's Fund. The header is blue with the organization's logo and name. Navigation links include 'Who We Serve', 'Donate', 'Volunteer and Get Involved', 'Our Programs', and 'About Us'. A search bar is also present. A yellow banner at the top of the main content area states: 'As of Aug. 3, 2021, San Mateo County requires everyone to wear a face covering while indoors, per the local health order. Learn More.' The main content area is titled 'Volunteer and Get Involved'. It features a large photo of a group of volunteers in a warehouse setting. Below the photo, there are two sections: 'Seasonal Volunteer Opportunities' and 'Year-round volunteer opportunities'. The 'Seasonal Volunteer Opportunities' section includes 'July and August—Back to School and School Supply Drive!' and 'October—Costumes for Kids!'. The 'Year-round volunteer opportunities' section includes 'January-December: Administrative Projects' and 'Host a Collection Drive!'. Each section provides a brief description of the opportunity and a 'Contact Us!' link.

**County of San Mateo CHILDREN'S FUND**


Translate Departments Career Contact Us

Who We Serve Donate Volunteer and Get Involved Our Programs About Us

As of Aug. 3, 2021, San Mateo County requires everyone to wear a face covering while indoors, per the local health order. [Learn More.](#)

Home

### Volunteer and Get Involved



**Get Involved with the Children's Fund!**

The Children's Fund depends on the efforts of more than 500 volunteers each year! We need your help!

**Volunteer Opportunities**

We love hosting volunteers of all ages (children 12 and up). The Children's Fund welcomes individuals, community, or corporate groups. We can host groups of up to 15 people and recommend shifts of 1.5 to 2 hours. Most volunteer events take place at our office/warehouse at 1 Davis Drive, Belmont, CA.

To join our volunteer list and receive newsletters with upcoming opportunities, please send an email to: [childrensfund@smcgov.org](mailto:childrensfund@smcgov.org) with the Subject Line: *Add me to your volunteer list!*

If you are a corporate or community group, please email us for more information at: [childrensfund@smcgov.org](mailto:childrensfund@smcgov.org)

**Year-round volunteer opportunities**

**January-December: Administrative Projects**

We would love your help with our mailers and other administrative tasks. You can come join us at our offices or do your volunteer work from home.

**Host a Collection Drive!**

Collect new backpacks and school supplies, Halloween costumes, or toys and gifts with your friends, neighbors, co-workers, classmates, church/synagogue, or girl scout troop. We'll provide the materials and a barrel and can pick up all your donations.

[Contact Us!](#)

**Seasonal Volunteer Opportunities**

**July and August—Back to School and School Supply Drive!**

Help us sort through donations and fill backpacks full of school supplies to distribute to children in time for the first day of school. We will distribute more than 1,000 backpacks this year and need your help! Volunteer hours are typically weekdays between 9am and 5pm.

**October—Costumes for Kids!**

Help us collect and organize costumes for distribution.

For more information, visit:

<https://childrensfund.smcgov.org/volunteer-and-get-involved>

# Children's Fund

---

## We Accept Donations

- **Monetary Donations** of Cash or Checks
- **Online** Donation Portal
  - <https://childrensfund.smcgov.org/donate>
- Purchase from **Amazon Wish List** for seasonal programs
- New **Gift Cards** (Target preferred)
- New **Backpacks** and/or **School Supplies**
- New, in box, **Holiday Gifts** (no toy guns or weapons)



# Children's Fund

DON'T FORGET TO FOLLOW US ON FACEBOOK!



Children's Fund  
of San Mateo  
County

@childrensfundsmc

Home

About

Photos

Reviews

Likes

Posts

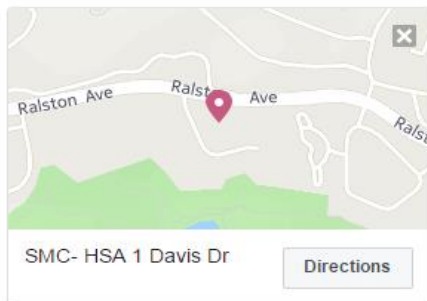
Create a Page



Like Follow Share ...

Send Message

Featured For You



SMC- HSA 1 Davis Dr

Directions



360 people follow this

Status Photo/Video

Government Organization in Belmont,  
California

5.0 ★★★★★

Community

Invite your friends to like this Page

361 people like this

360 people follow this

60 people have visited

Pamela Storm and 9 other friends like this or  
have visited



# County Strategic Plan on Homelessness

## VISION

In the next five years, homelessness will be a rare, brief, and one-time occurrence.

Create System  
to End  
Homelessness

End Veteran  
Homelessness

End Family  
Homelessness

End Youth  
Homelessness

Individuals  
Exiting  
Institutions  
will not  
Discharge to  
Homelessness

## KEY GUIDING PRINCIPLES

**Systems  
Orientation**

**Housing  
First**

**Data  
Driven**

**Client  
Centered**

**Context  
Specific and  
Aligned  
with Best  
Practices**

## Coordinated Entry to Homeless Services

### Safety Net Services

Community based  
emergency and safety net  
services (Core Service  
Agencies)

### Homeless Services

Community based homeless  
services (homeless shelters,  
homeless outreach, rapid re-  
housing program)

# Core Service Agencies: Points of Entry

---

## **DALY CITY COMMUNITY SERVICE CENTER**

350 90th St., Daly City  
(650) 991-8007

**Area Served: Daly City,  
Broadmoor, Colma**

## **YMCA COMMUNITY RESOURCE CENTER**

1486 Huntington Ave.,  
South San Francisco  
(650) 276-4101

**Area Served: Brisbane, San Bruno,  
South San Francisco**

## **PACIFICA RESOURCE CENTER**

1809 Palmetto Ave., Pacifica  
(650) 738-7470

**Area Served: Pacifica**

## **COASTSIDE HOPE**

99 Avenue Alhambra, El Granada  
(650) 726-9071

**Area Served: Montara, Moss Beach,  
El Granada, Half Moon Bay**

## **LOCATIONS**

## **SAMARITAN HOUSE**

4031 Pacific Blvd., San Mateo  
(650) 347-3648

**Area Served: Belmont, Burlingame,  
Foster City, Hillsborough, Millbrae,  
San Mateo, San Carlos**

## **SAMARITAN HOUSE SOUTH**

1852 Bay Rd., East Palo Alto  
(650) 294-4312

**Area Served: East Palo Alto,  
Menlo Park**

## **PUENTE DE LA COSTA SUR**

620 North St., Pescadero  
(650) 879-1691

**Area Served: La Honda, Loma Mar,  
Pescadero, San Gregorio**

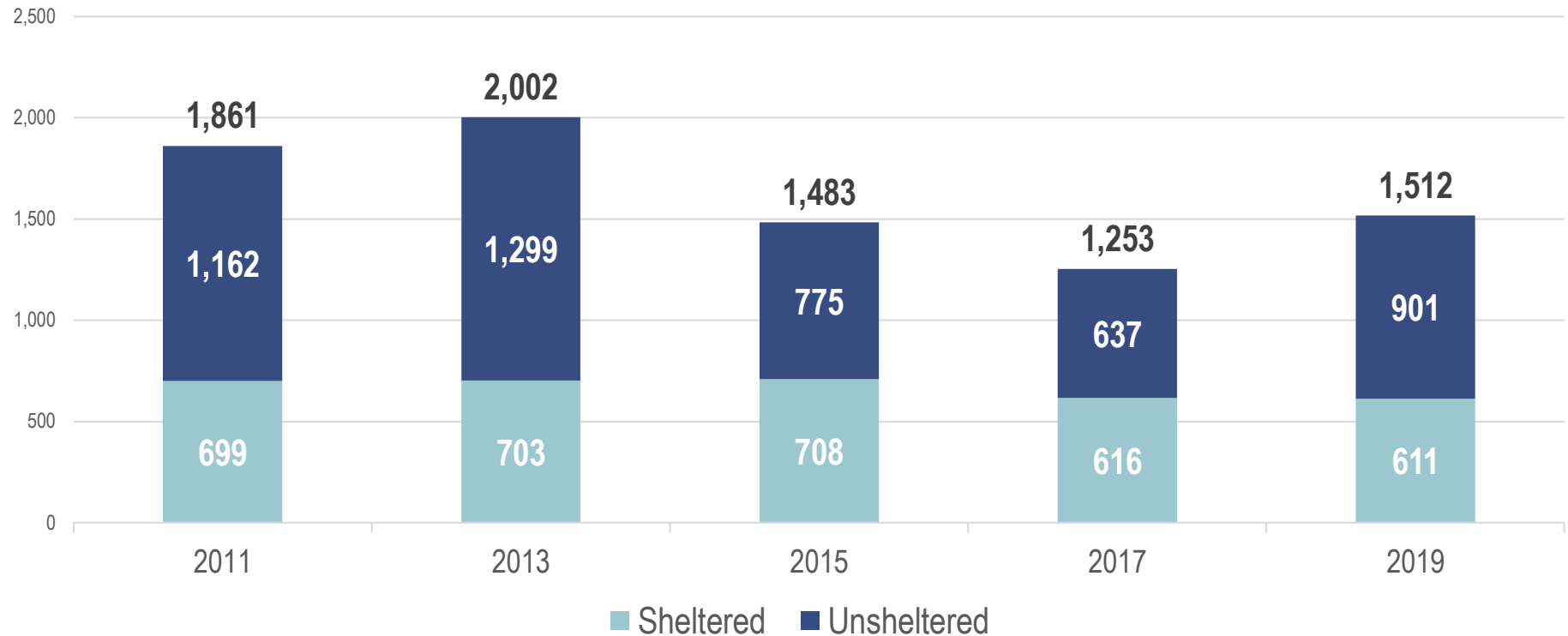
## **FAIR OAKS COMMUNITY CENTER**

2600 Middlefield Rd., Redwood City  
(650) 780-7500

**Area Served: Redwood City,  
North Fair Oaks, Portola Valley,  
Woodside, Atherton**

# Center on Homelessness

## Homeless One Day Count



- The next count will be on January 27, 2022. **We Need Volunteers!**
- To be added on the Volunteer Interest list, please email [HSA\\_OneDayCount@smcgov.org](mailto:HSA_OneDayCount@smcgov.org)

# Disaster/Emergency Response

---

Our **purpose** is to help San Mateo County Human Services Agency prepare for, respond to, and recover from all hazards and natural disasters related to shelter.

## During an emergency or disaster:

- Staff are required to report to duty
- May initiate a Temporary Evacuation Point or Emergency Shelter for unincorporated San Mateo County
- Assist with client care
- Work in partnership with the County Office of Emergency Services and the American Red Cross

## Care and Shelter Response

- COVID Isolation Housing





# County Veterans Services Office (CVSO)

**Ed Kiryczun**

**Veterans Services Officer**

550 Quarry Road, San Carlos  
(650) 802-6598

Twitter:@SMC\_CVSO

<http://hsa.smcgov.org/veterans>

Office Open for Walk In's  
Tues and Thursday  
8am-4:30pm  
*(closed 12-1)*

Appointments by  
phone, web, and  
in-person  
5 days/week



# County Veterans Services Office

---

## Services Offered

- Comprehensive benefit counseling
- Claim advocacy; preparation, submission and follow-up
- Initiate and develop appeals when appropriate
- Network with federal, state and local agencies
- Information and referral services for:
  - ✓ Employment Services
  - ✓ Housing Assistance and Shelter Services
  - ✓ Public Assistance
  - ✓ VA Medical Care
  - ✓ Social Security
  - ✓ Veterans Court, and Legal Assistance
  - ✓ Vocational and Physical Rehabilitation
  - ✓ Behavioral Health programs



# 2020 Veteran Recognition

---

Patriot of the Year Video  
Harminsons



**Selina Toy Lee**

*Director of Collaborative Community Outcomes*

Twitter: @SelinaToyLee