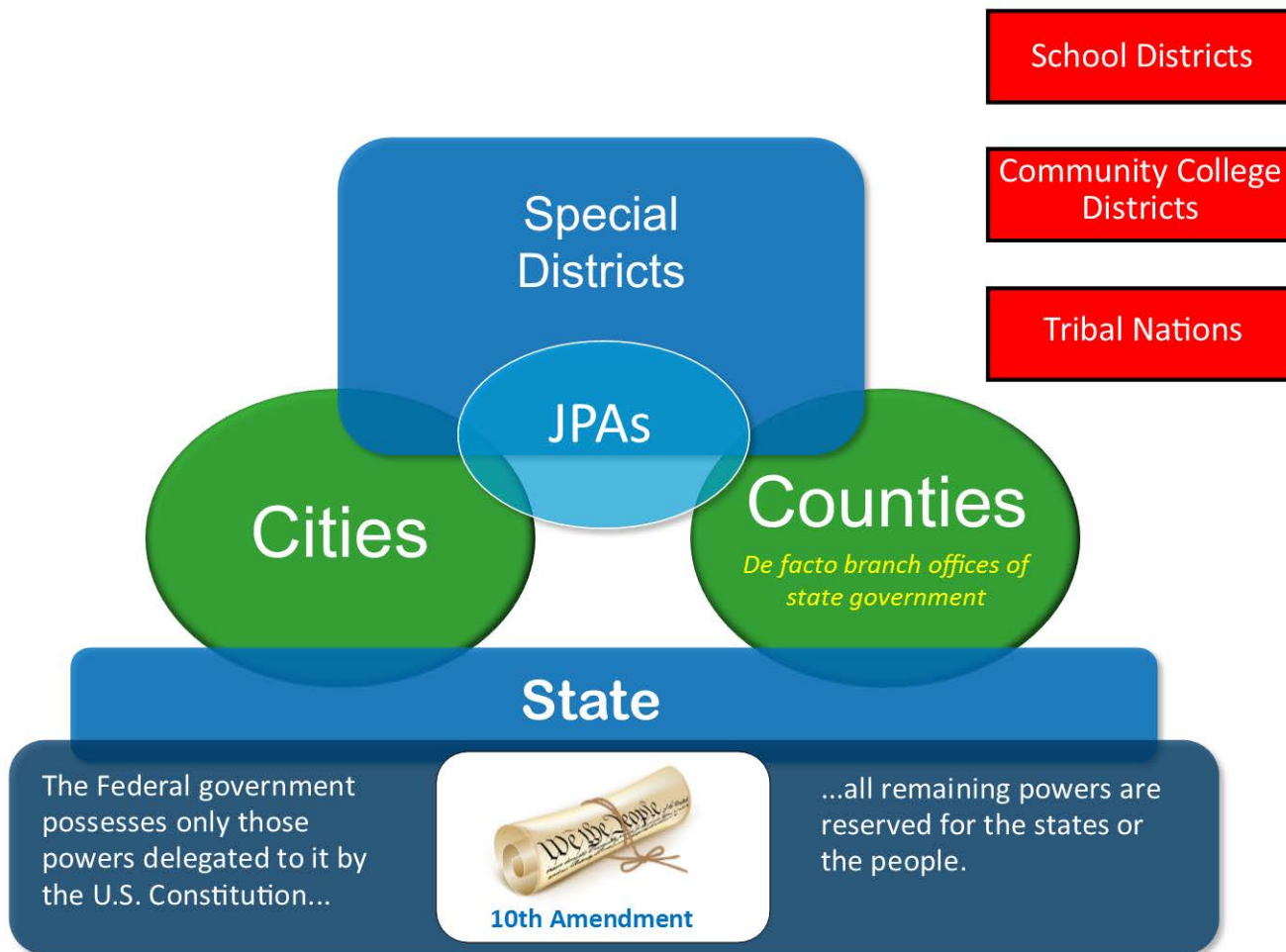




SAN MATEO COUNTY & COUNTY OF SAN MATEO



Where Does the County Fit?



SAN MATEO COUNTY

The Geography



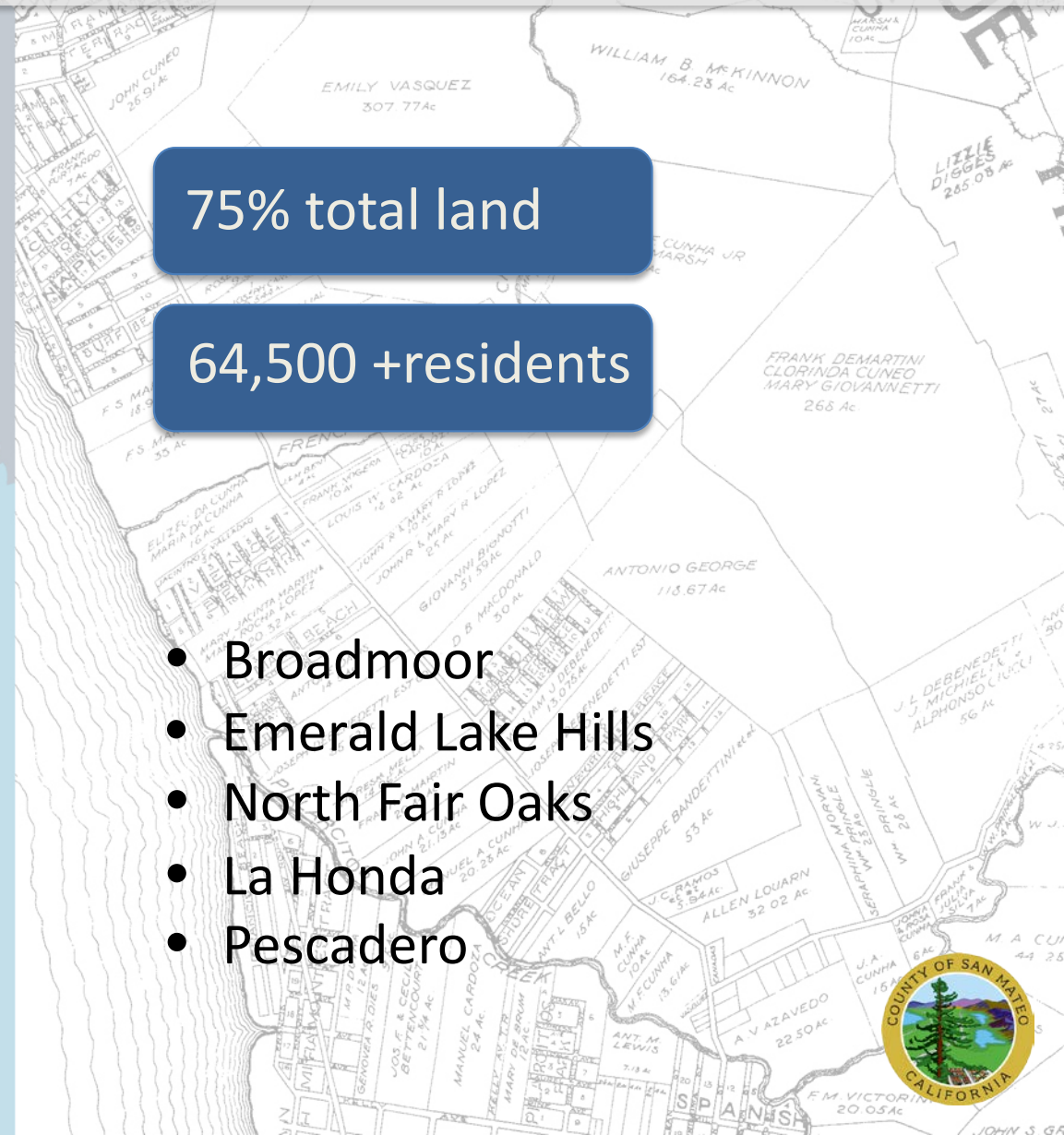
57.7 MILES
OF
COASTLINE



The Jurisdictions

20 CITIES





Where We Learn



183
PUBLIC SCHOOLS



Who We Are

36.1% White

29.8% Asian

25.0% Hispanic

5.1% Two or More
Races

1.9% Black

764,442
PEOPLE



Prosperity

- **\$122,641 median household income (Family of 4)**
- **\$1,089,400 Median Housing Value**
- **91% of Households have Broadband Internet**

**ONE OF THE
WEALTHIEST
COUNTIES**



Wide Disparities Exist



WEALTH
MASKS WIDE
DISPARITIES



County Government

Chief Responsibilities

SAFETY NET
PUBLIC SAFETY
MUNICIPAL SERVICES

20 Departments

5,600+
EMPLOYEES

\$3.3 Billion
FY 2021-22 BUDGET



Elected Officials

Board of Supervisors
(Five Members)

**Assessor/County Clerk-Recorder/Chief
Elections Officer**

Controller

Coroner

District Attorney

Sheriff

Tax Collector/Treasurer



Other Services



Health

Health

San Mateo Medical Center

228 bed hospital
11 clinics
Long term care
Psychiatric services

Other Health Services

In-home Care
Public Health
Basic medical/mental health care
for youth and adults in custody
Emergency medical services
Aging/Adult Services
Environmental Health
Restaurant inspections/
hazardous waste collection

Behavioral Health & Recovery

Mental Health Treatment
Substance Abuse Treatment



Public Assistance

Safety Net Services

Human Services Agency

Social Service Programs
Employment Services
Foster Youth
Child Protective Services

Department Of Child
Support Services

Establishes and Enforces Child
Support Orders

Workforce Development

Connects low-income job seekers
with employers

Department of Housing

Increases access
to affordable housing



Public Safety

Sheriff

Law Enforcement
Court Security
Operate Jails

Probation Department

Probation Supervision
Operate Juvenile Hall

Safety Budget

Administration of Justice

District Attorney
Private Defenders
County Court Support

Emergency Response

Public Safety
Communications
Fire Protection

Coroner's Office

Investigate cause
and manner of death



Serving the Unincorporated Areas



Municipal Services

**Public Works /
Project Development Unit**

Planning and Building

Office of Sustainability

Parks



Countywide Services

A woman with dark hair and a headband, wearing a green shirt, is sitting at a light-colored wooden table. A young girl with long dark hair and a pink flower headband is sitting across from her, holding an open book. They are both looking at the book. The background is slightly blurred, showing other people and a library setting.

LIBRARIES

A wooden boardwalk with railings winds through a dense, green forest. The path is made of wooden planks and is surrounded by lush vegetation and trees. The scene is bright and sunny.

PARKS



Where Does the Money Come From?

\$3.3 BILLION TOTAL BUDGET

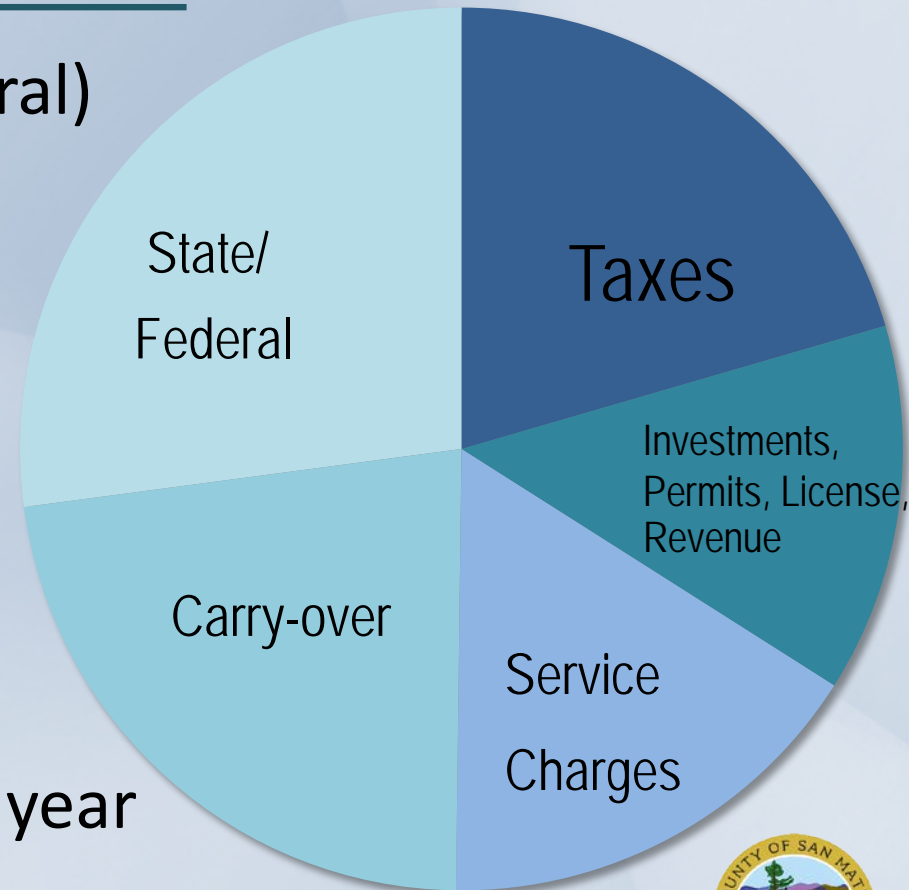
Intergovernmental (state/federal)

Taxes: Property and Sales

Charges for Services

Investments, Permits, License,
Other Revenue Sources

Unspent carry-over from prior year



SAN MATEO COUNTY

