

COUNTY_{OF} **SAN MATEO**





Skeleton Weed

Jenny Gossett & Nancy Poss

SMC Department of Agriculture

November 2021



COUNTY OF SAN MATEO



Scientific Name:

Chondrilla juncea

- CDFA A Rated Noxious Weed
- Prohibited in 9 States: California, Arizona, Washington, Colorado, Idaho, Montana, Nevada, Oregon, South Dakota



Skeleton Weed

COUNTY OF **SAN MATEO**



Threat to Agriculture

- Reduces Field Crop Yield, Hinders Harvest Machinery, and Reduces Forage for Livestock
- Highly Competitive for Water and Nutrients
- 2020 SMC Field Crop Production was \$1.6 Million and Livestock Production was \$5.9 Million



Identification

Named for Wiry Stems and Skeleton-like Appearance



Rosette: 2 to 5 Inch Leaves, Irregular Teeth, Lobes Point Backward



Flower: Less Than 1 Inch



Full Grown Plant: Up to 3 Feet Tall



Bolting: Very Few Narrow Linear Leaves

Skeleton Weed

COUNTY OF SAN MATEO



Identification

Characteristic Bristly, Downward Pointing Hairs at Base of Stem



Skeleton Weed

COUNTY OF **SAN MATEO**



Biology

- Perennial Endemic to Southern Europe and Eurasia
- Flowers June Through Late Fall
- Self Fertilizes
- Reproduces Vegetatively from Root Fragments
- Seed Dispersal by Wind



Pappus on Seed

Biology

Can Grow in Any Crack or Crevice



Skeleton Weed

COUNTY OF SAN MATEO

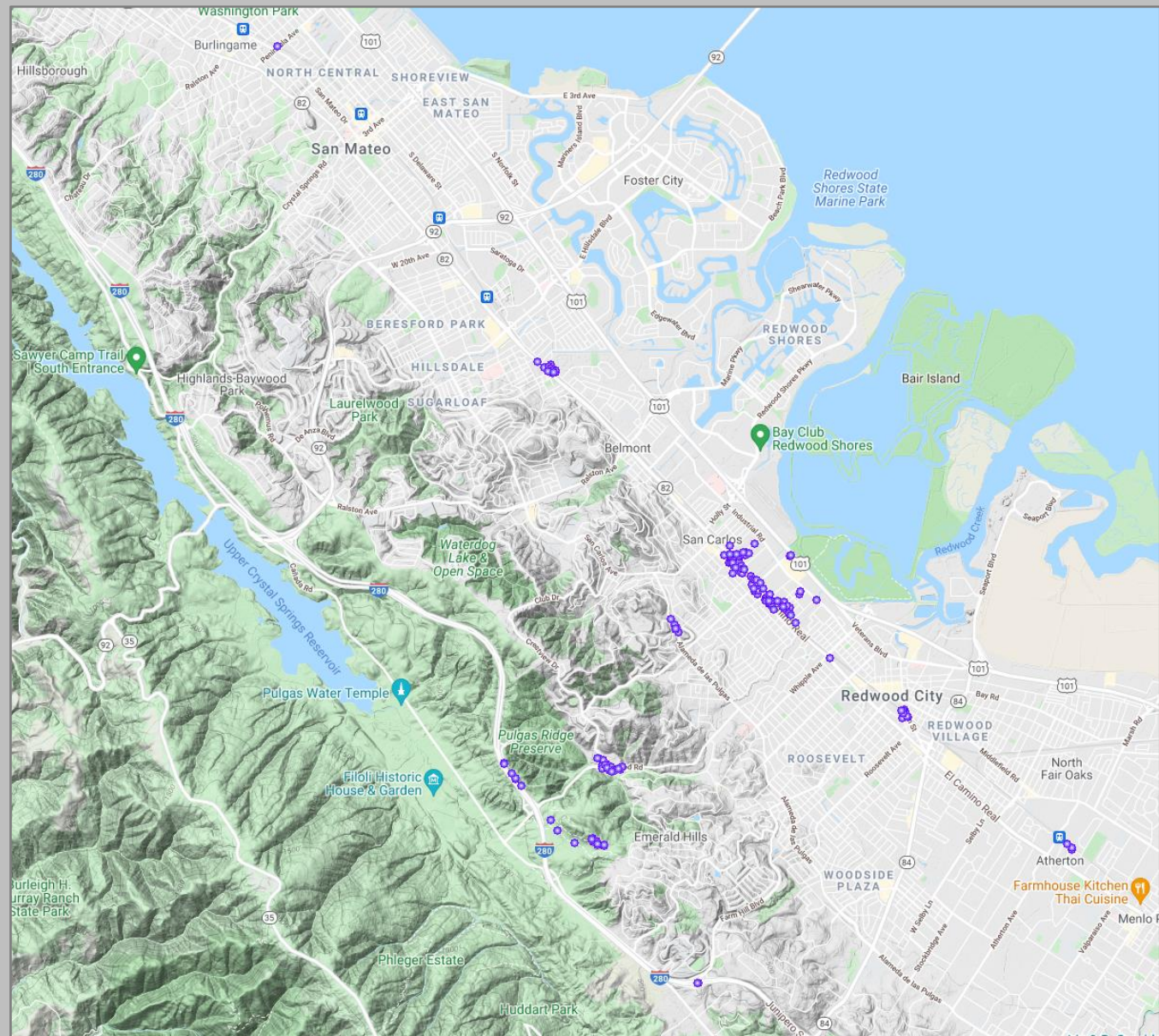


Location

Caltrain Corridor

Atherton to San
Mateo

Edgewood Park
and 280
Interchange

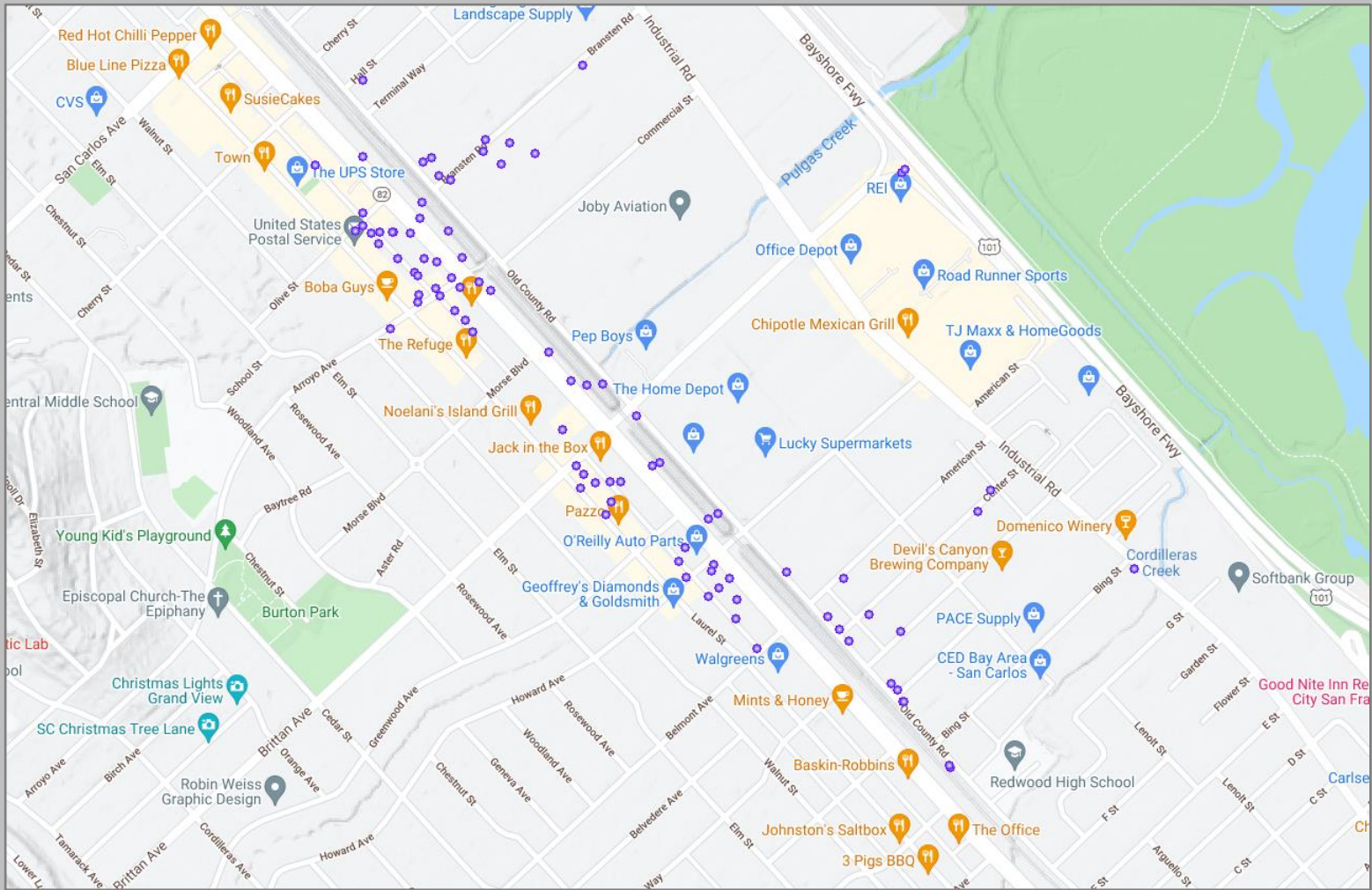


Skeleton Weed

COUNTY OF SAN MATEO



Location: Mainly on Private Property



Skeleton Weed

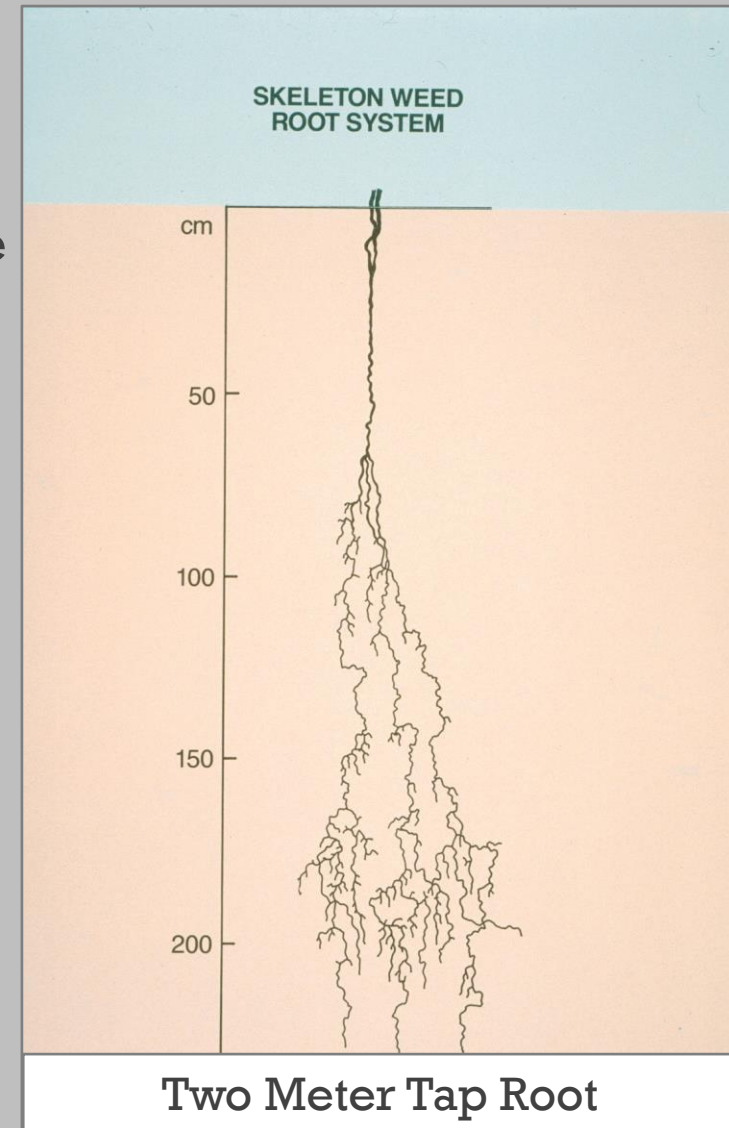
COUNTY OF SAN MATEO



Treatment Options

- Mechanical: Hand Pulling or Cut at Base
- Chemical: Systemic Herbicide
- Biological Control

**Let's Start
Pulling!**



SMC Department of Agriculture

(650) 363-4700

agwm.smcgov.org

**Jenny Gossett &
Nancy Poss**



COUNTY_{OF} SAN MATEO

