



COUNTY OF SAN MATEO
OFFICE OF THE CONTROLLER

Juan Raigoza
Controller

Shirley Tourel
Assistant Controller

County Government Center
555 County Center, 4th Floor
Redwood City, CA 94063-1665
650-363-4777
<http://controller.smcgov.org>

For Immediate Release

December 22, 2021

Contact: Shirley Tourel, Assistant Controller

(650) 363-4777

controller@smcgov.org

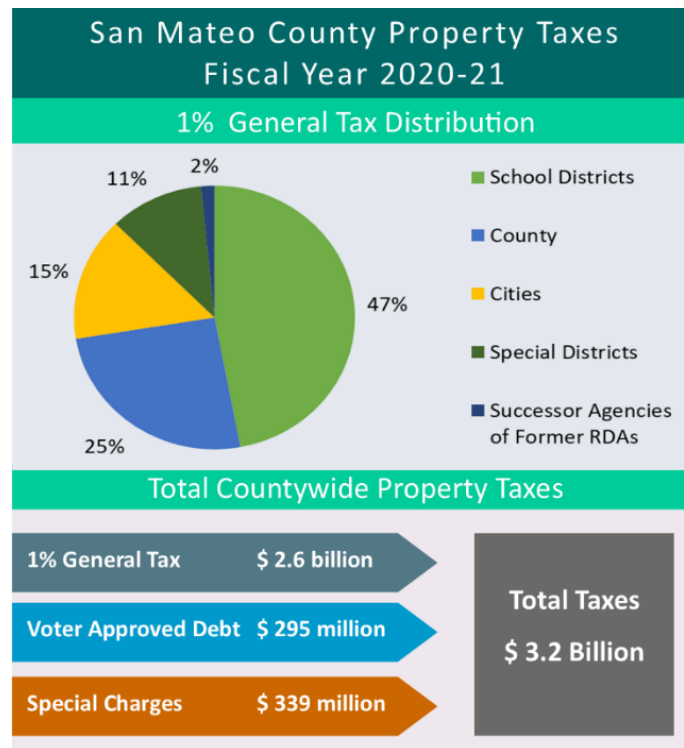
County Controller Publishes Property Tax Highlights for FY 2021-22
Collected funds help government agencies provide vital public services

Redwood City – The Property Tax Highlights publication, which shows tax revenues collected and distributed to local governments operating within San Mateo County, is now available for fiscal year (FY) 2020-21. These taxes help fund the operations of local government agencies that provide essential services to the county’s residents.

Vital to public services is the countywide 1 percent General Tax, which totaled \$2.6 billion and is received by all local governments (cities, schools, special districts, former Redevelopment agencies, and the County).

Special charges totaling \$339 million received primarily by cities and special districts are included in property tax bills for services such as sewer maintenance and flood control. Additional taxes to pay debt service amounts accounted for \$295 million, which primarily consist of voter-approved bonds for local schools.

Countywide combined property taxes total \$3.2 billion for FY 2020-21 and represents 10 consecutive years of property tax growth in San Mateo County.



The newly released FY 2021-22 Tax Rate Book is also available. It shows assessed property values by taxing agency and property tax rates by tax rate area.

For more information on property taxes, including links to the Controller's Office annual Tax Rate Book and Property Tax Highlight publication, visit <http://controller.smcgov.org/>.

###