

PROPERTY OWNERS MEETING SEWER SERVICE RATES

**Burlingame Hills Sewer Maintenance District
(District)**

*Burlingame Recreation Center
850 Burlingame Avenue
Burlingame, CA*

*May 14, 2018
7:00 P.M.*

Department of Public Works



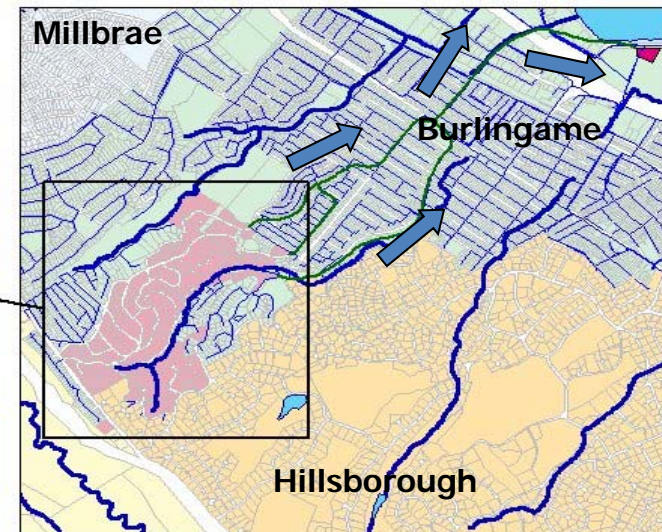
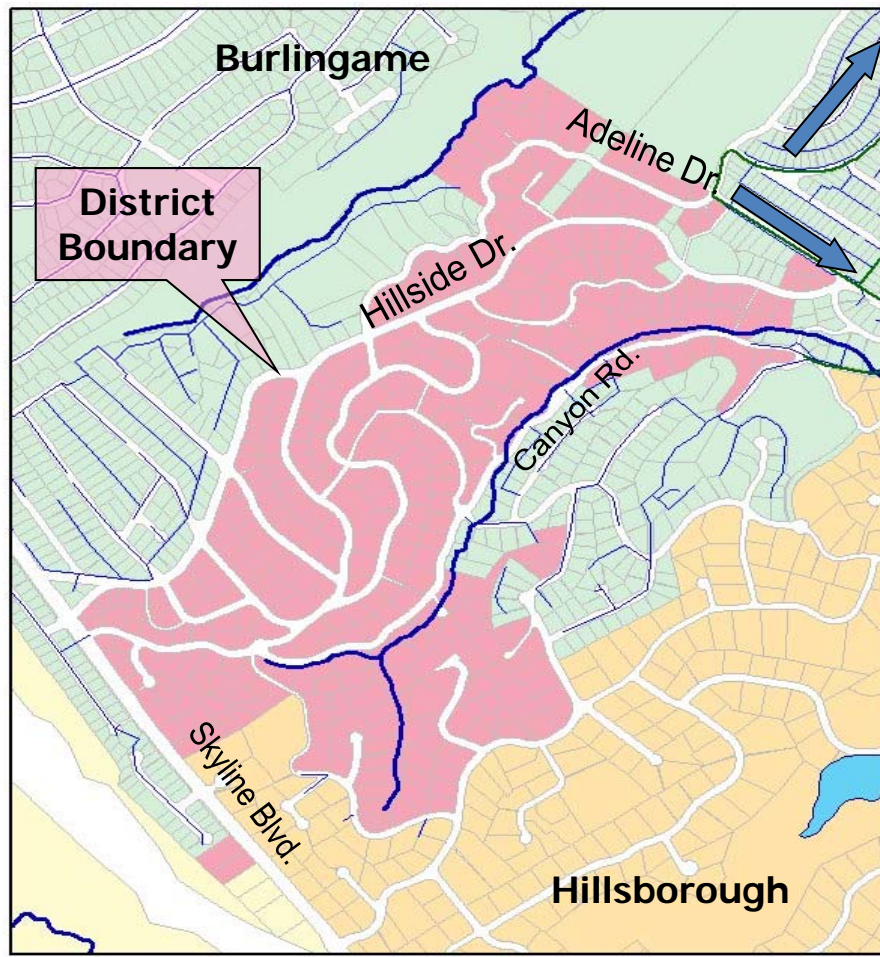
OVERVIEW OF TONIGHT'S MEETING

- ***District Information***
- ***District Funding***
- ***What's Taken Place Since Last Rate Adjustment***
- ***Coordination with BHIA***
- ***Elements of the Sewer Service Rates***
 - ***In District Costs***
 - ***Out of District Costs***
- ***Proposed Rates***
- ***Rate Setting Timeline***
- ***Questions and Comments***



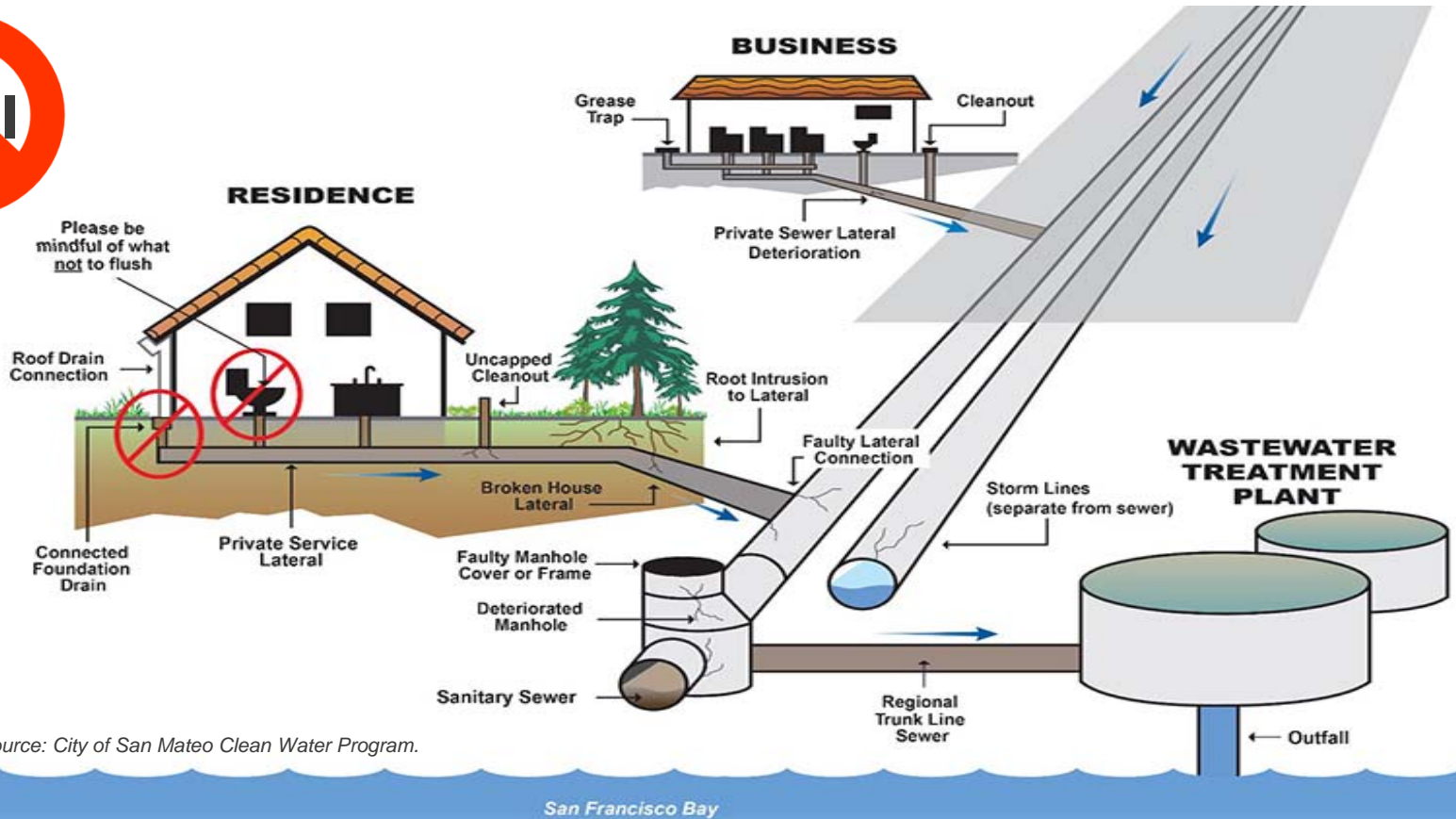
DISTRICT INFORMATION

SEWAGE FLOWS THROUGH CITY OF BURLINGAME TO THE CITY'S TREATMENT PLANT AT 1103 AIRPORT BOULEVARD FOR TREATMENT



DISTRICT INFORMATION – HOW DOES A SEWER SYSTEM WORK?

EACH DISTRICT RELIES ON DOWNSTREAM AGENCIES TO TRANSPORT SEWAGE COLLECTED BY THE DISTRICT TO THE TREATMENT PLANT



Source: City of San Mateo Clean Water Program.

DISTRICT SPECIFIC STATISTICS

District	Age (yrs) *	Number of Connections **	Equivalent Residential Units **	Downstream Transport Agency	Treatment Facility
Burlingame SMD	83	420	435	City of Burlingame	City of Burlingame

**Age based on District formation date*

*** Based on 2017-18 SSC Report*

District	Miles of Pipe	Percentage in Easements	Percentage in Streets
Burlingame SMD	6.6	40.57%	59.43%

SEWER/SANITATION DISTRICTS IN COUNTY GOVERNMENT

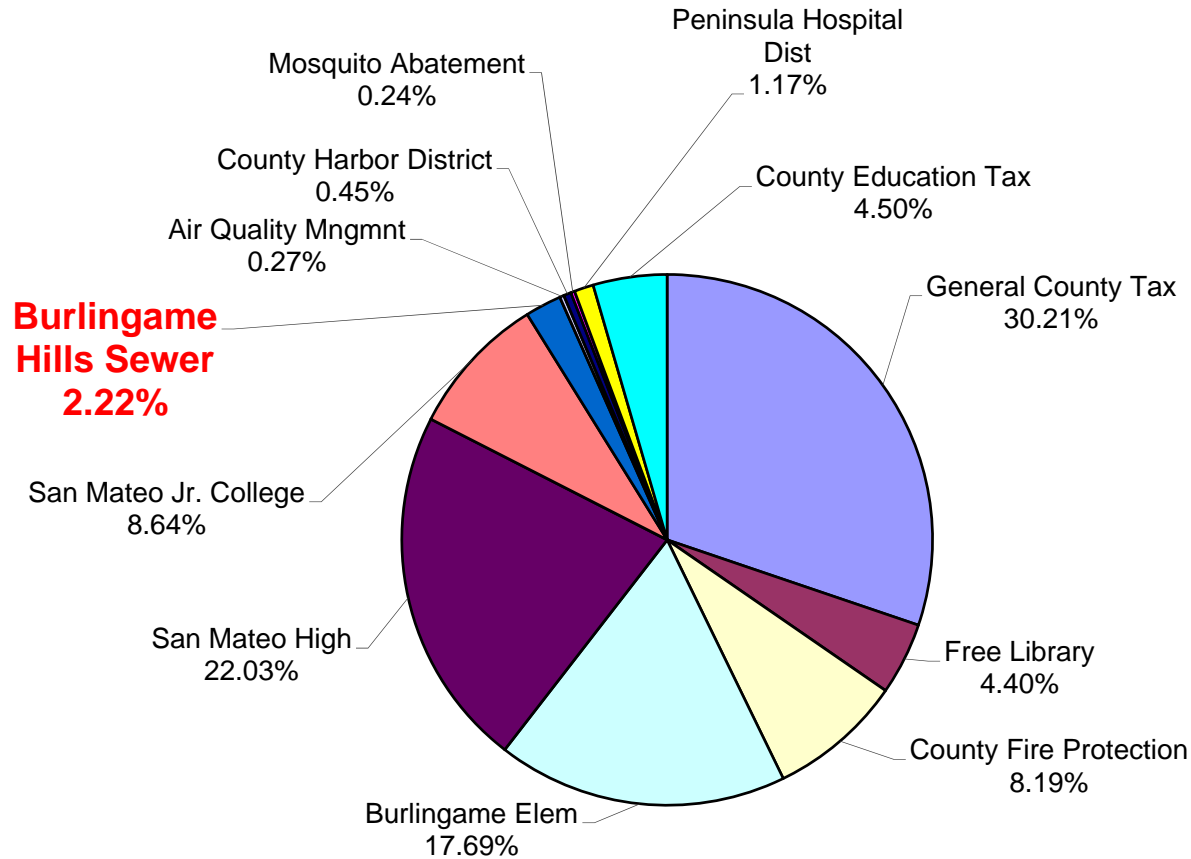
EACH DISTRICT IS AN INDEPENDENT ENTITY WITH ITS OWN SEPARATE BUDGET

- Each District's Governing Board is the Board of Supervisors
- The District receives Sewer Service Charges and limited property taxes within the District boundaries to fund sewer service
- The Sewer Service Charges are a Fee For Service, Not a Tax
- The District collects Sewer Service Charges on the Tax Bill because it is least costly way to collect the fee



WHERE DOES MY PROPERTY TAX MONEY GO?

BHSMD Sample Property Tax Allocation (TRA 054-004)



Note: BHSMD allocation of a portion (2.22%) of the property tax is approximately \$70,000 per year.



WHAT'S TAKEN PLACE SINCE LAST RATE ADJUSTMENT

- *Met regularly with representatives of the Burlingame Hills Improvements Association (BHIA)*
- *Completed Critical Spot Repairs at 23 Locations - \$122,200*
- *Obtained a State Revolving Fund loan and completed the Adeline Drive/Canyon Road Sewer Capacity Improvement Project with the \$2.3 million loan*
- *Contributed to the purchase of maintenance equipment (CCTV camera, flushing/vacuum trucks, pickup trucks, and dump truck)*
- *Sanitary Sewer Overflow (SSO) Response, Reporting, Water Quality Monitoring, and Public Awareness Program*
- *Continue to provide 24/7 emergency response to clear blockages in private laterals*



WHAT'S TAKEN PLACE SINCE LAST RATE ADJUSTMENT

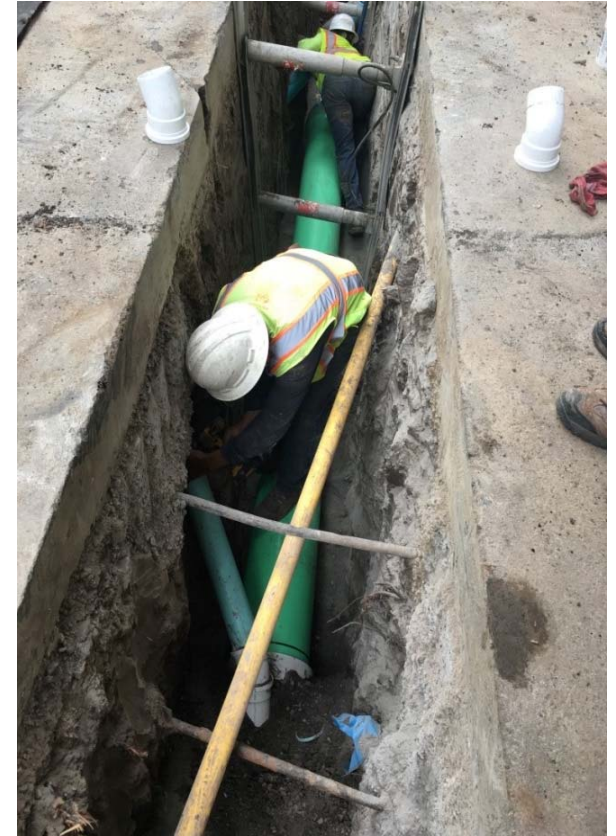
CRITICAL SPOT REPAIRS COMPLETED IN 2015



Repaired sewer main pipe defects at 23 locations identified by CCTV inspection. Most defects located in easements and involved removal of trees, debris, fences and working around utility lines.

WHAT'S TAKEN PLACE SINCE LAST RATE ADJUSTMENT

ADELINE DR./CANYON RD. CAPACITY IMPROVEMENTS COMPLETED IN 2017






Replaced 1,100 feet of pipes in easement & 3,700 feet of pipes in streets (10% of District mains) funded by State Revolving Fund Loan with 30-year term and interest rate @ 1.5%

WHAT'S TAKEN PLACE SINCE LAST RATE ADJUSTMENT


POLLUTION PREVENTION/PUBLIC AWARENESS PROGRAM

Be Sewer Savvy:
Notes, tips & tricks to help keep your sewer pipes in tip-top shape.

- ✓ Protect your home
- ✓ Protect your business
- ✓ Avoid costly repairs



And prevent water pollution, too!



AVOID SEWER BACKUPS AND OVERFLOWS BY KEEPING TRASH OUT OF YOUR TOILET



Did you know?
Changing nappies, baby wipes and facial wipes are some of the biggest causes for sewer backups. As some nappies in the County of San Mateo Sewer District, that's right, when it's package says "Flushable" or "biodegradable," they aren't. NO! NO! NO! They belong in the trash.

Flush ONLY toilet paper. Put trash in the trash can.
For more information please visit our website at www.smcgov.org/sewers or call us at 650-599-4100.

WHEN IT COMES TO GARBAGE, IT BELONGS IN THE TRASH.

These items are not trash: The water from your house or business (batteries, cleaning, etc.) eventually ends up into one of the most beautiful parts of our community, the San Francisco Bay.

Throwing anything other than toilet paper down the drain can cause serious sewer problems (SOS) and will severely impact your plumbing system, the sewer system, and the protection of the wastewater plant.

PROPERLY DISPOSING OF YOUR WASTE WILL HELP PROTECT PUBLIC HEALTH AND THE ENVIRONMENT.



www.co.sanmateo.ca.us/sewers

San Mateo Sewer Maintenance District
Crystal Springs County Sanitation District
Devonshire County Sanitation District
Edgewood Sewer Maintenance District
Emerald Lake Heights Sewer Maintenance District
Fair Oaks Sewer Maintenance District
Harbor Industrial Sewer Maintenance District
Kensington Square Sewer Maintenance District
Oak Knoll Sewer Maintenance District
Sonic Heights County Sanitation District

Department of Public Works
151 County Center, 3rd Fl.
Redwood City, CA 94063
(650) 363-4300

For more information about
San Mateo Sewer District, visit the
San Mateo Sewer District
Public Information Program
(650) 599-4100
www.smcgov.org

**RETHINK WHAT YOU FLUSH...
FLUSH GREEN**



PROTECTING WATER QUALITY
TEARMS WITH EACH OF US

Understanding Your Sewer System and What You Pay For

Para obtener una copia de este folleto en Español, favor de llamar al (650) 599-1443


What Is a Sanitation/Sewer District?
A sanitation/sewer district is a Special District formed for a specific area to provide sewer service to the properties within the district boundary. Each sanitation/sewer district has its own budget with money collected from the district and spent within the district. While the Board of Supervisors serves as the Governing Board for the sanitation/sewer districts operated by the County of San Mateo, the districts are separate legal entities from the County of San Mateo.

What Is Sewer Services?
Sewer service includes sewer system operation and maintenance, emergency response, construction of new sewer pipes or replacement of sewer pipes within the districts, and complying with regulatory requirements. The districts are also responsible for paying its share for sewage treatment and disposal, construction projects that carry sewage from the districts to the wastewater treatment plant and construction projects at the treatment plants. The wastewater generated from properties with the district is carried in the district sewer pipes to the sewer pipes maintained by the downstream agency, and travels to the wastewater treatment plant.

This information is being provided to inform you of the importance of a reliable sewage system. Proper maintenance of the sewer system helps protect the environment, minimizes the chances of sewer backups or service disruptions, and minimizes overall sewer system costs.

COUNTY MAINTAINED DISTRICTS:
Burlingame Hills Sewer Maintenance District
Crystal Springs County Sanitation District
Devonshire County Sanitation District
Edgewood Sewer Maintenance District
Emerald Lake Heights Sewer Maintenance District
Fair Oaks Sewer Maintenance District
Harbor Industrial Sewer Maintenance District
Kensington Square Sewer Maintenance District
Oak Knoll Sewer Maintenance District
Sonic Heights County Sanitation District

For more information, contact the Public Works Department at (650) 363-4300, between 8 a.m. and 5 p.m. Monday through Friday, or go to www.co.sanmateo.ca.us/sewers



Beginning in 2012, brochures have been distributed to residents during service calls and mailed to residents upstream of a sanitary sewer overflow. Copies are also available on website at <http://www.smcgov.org/sewers>

WHAT'S TAKEN PLACE SINCE LAST RATE ADJUSTMENT

SANITARY SEWER OVERFLOWS (SSO)

District	2013	2014	2015	2016	2017	2018 (to date)
BHSMD	4	5	1	2	1	1

Basin Cleaning implemented in 2014

Primary Causes of SSOs: Roots, Paper Towels, and Heavy Wipes.



**The toilet is only meant
to flush the three P's—
pee, poop and paper.**

WHAT'S TAKEN PLACE SINCE LAST RATE ADJUSTMENT

REGULATORY COMPLIANCE:

➤ State Water Resources Control Board

- ***Development and continuous updating of Sewer System Management Plan (SSMP)***
- ***Reporting to State Office of Emergency Services certain types of SSO's within 2 hours***
- ***Sampling of water within 48 hours when SSO enters a creek or stream***
- ***Training maintenance staff on SSO response***



COORDINATION WITH BHIA

➤ *Priority Items for the Future:*

- ***Development and implementation of a Private Sewer Lateral Ordinance (PSLO) to require testing of sewer lateral at point of sale or major remodel***
- ***Develop an agreement with Town of Hillsborough for the transport of sewage from 28 properties within Town through District facilities***
- ***Implement a portion of the next CIP on the priority list with reserve funds***
- ***Preparation of new SRF Loan application(s) for remaining CIPs (\$10M - \$12M)***



DISTRICT EXPENSES

IN DISTRICT COSTS:

- ***Operation and Maintenance***
- ***Regulation Compliance***
- ***District Projects***



OUT OF DISTRICT COSTS:

- ***Sewage Transport and Treatment***
- ***Downstream Agency Capital Improvement Projects***

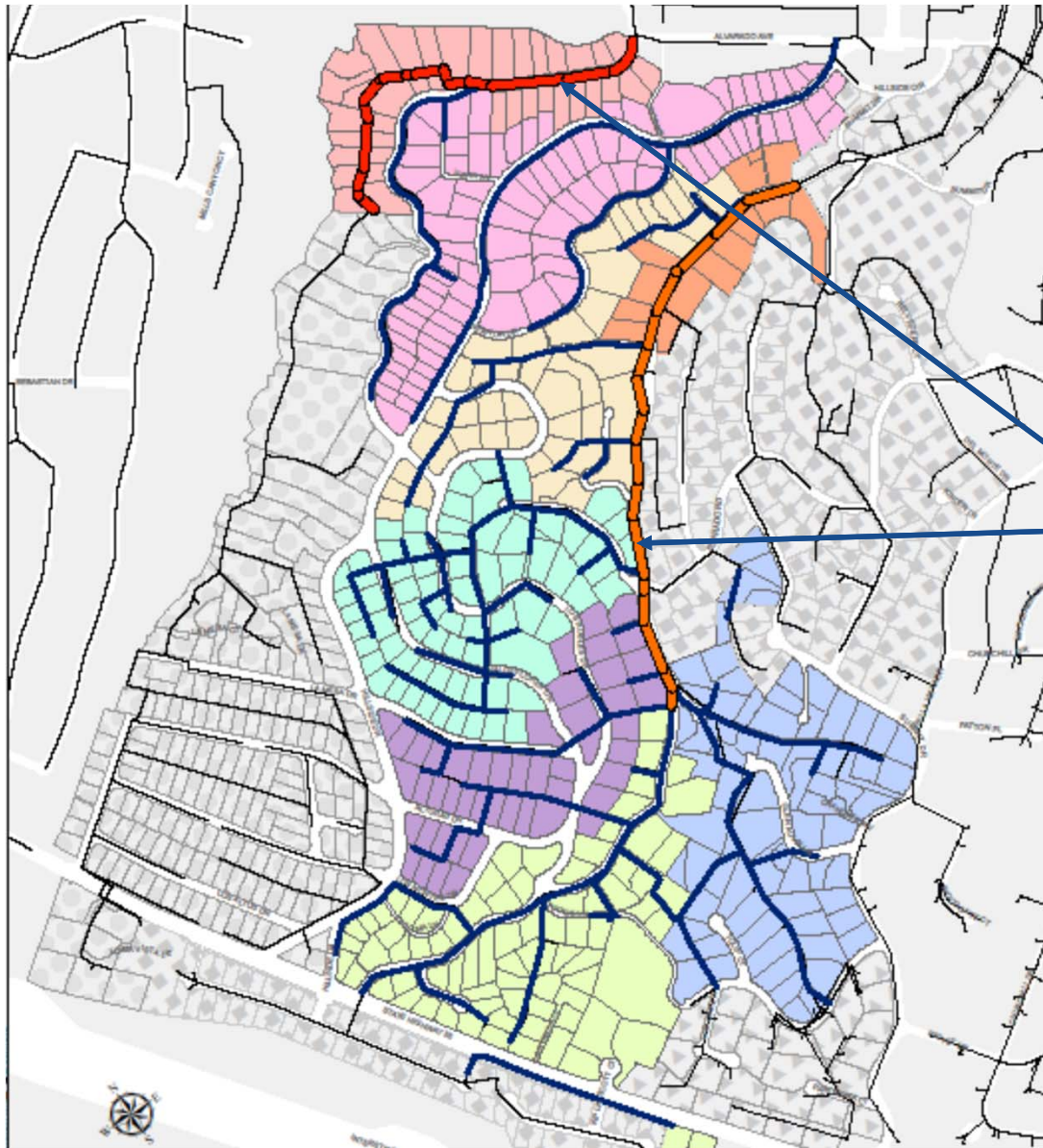


ELEMENTS OF THE SEWER SERVICE RATES **– CAPITAL IMPROVEMENT PROJECTS (CIP)**

HIGH PRIORITY CIPS IDENTIFIED THROUGH CONDITION ASSESSMENTS

- ***Improvements are recommended based on the following:***
 - ❖ ***Lack of capacity in pipe***
 - ❖ ***Excessive maintenance costs***
 - ❖ ***Structural defects in pipe***
- ***Portions of your Sewer Service Charges collected are used to pay for improvements.***





Recommended Capital Improvement Projects

Adeline Dr. and Canyon
Rd. Project completed in
2017

ELEMENTS OF THE SEWER SERVICE RATES

– FUTURE PLANNING

PRIORITY OF REMAINING CAPITAL IMPROVEMENT PROJECTS:

<u>Project Location</u>	<u>Estimated Cost</u>
Hillside/Adeline Area (~ 6,800 feet)	\$2.3 M
Upper Canyon Area (~ 6,400 feet)	\$2.5 M
Fey Area (~ 6,100 feet)	\$2.6 M
Tiara Area (~ 4,600 feet)	\$2.0 M
Alturas/La Mesa Area (~ 3,700 feet)	\$1.7 M
Lower Canyon Area (~ 3,200 feet)	\$1.6 M
Total Cost to Replace ~ 31,000 feet of Pipe (90% of District mains)	\$12.7 M

ELEMENTS OF THE SEWER SERVICE RATES **– OUT OF DISTRICT COSTS**

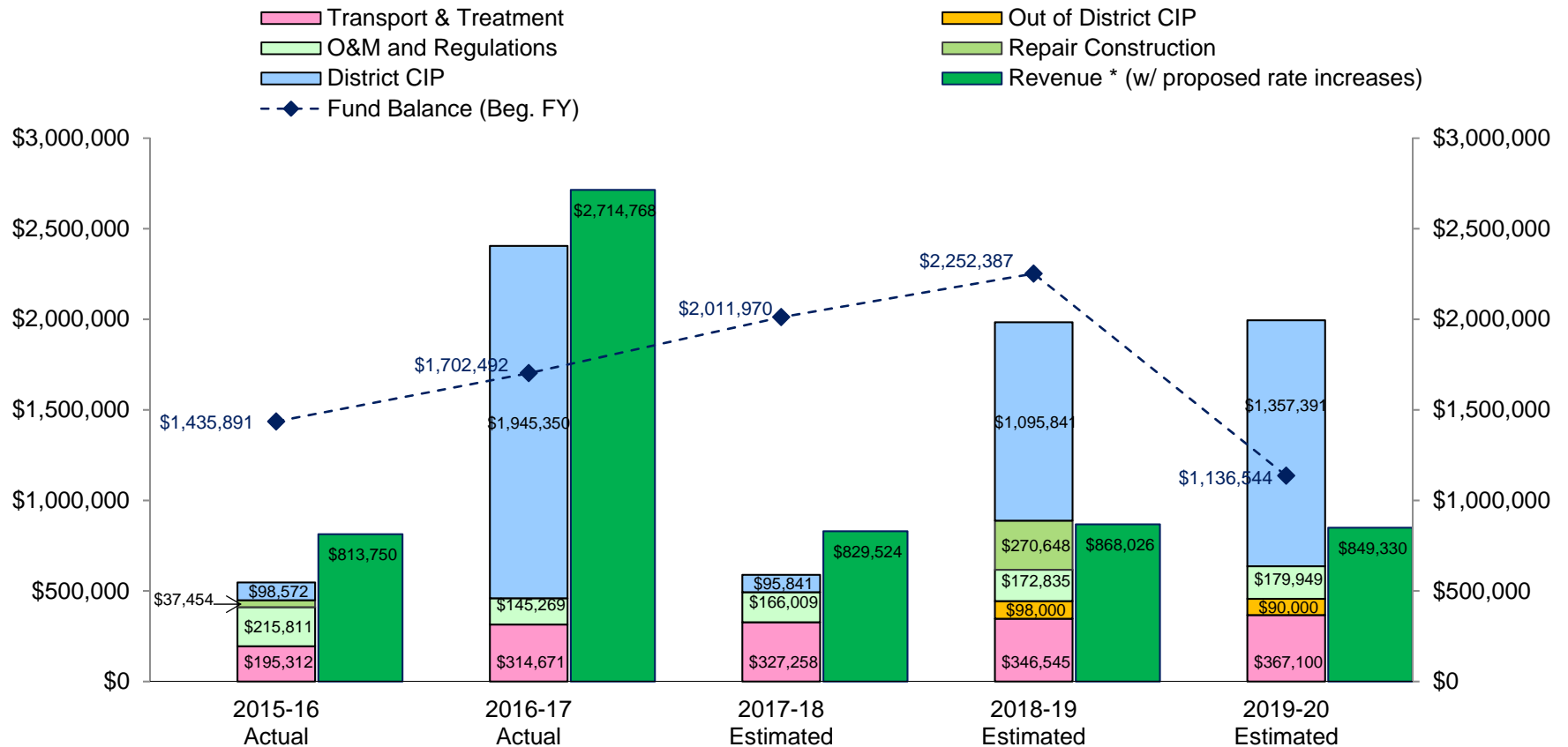
DOWNSTREAM AGENCY CAPITAL IMPROVEMENT PROJECTS

- ***The City of Burlingame plans to implement capital improvement projects on its sewer collection system and at its wastewater treatment plant.***
- ***These projects are estimated to cost over \$23 million over the next five years, which the District must pay a share of in accordance with the agreement with Burlingame. The District's share is estimated at approximately \$500,000.***



ELEMENTS OF THE SEWER SERVICE RATES – CAPITAL IMPROVEMENT PROJECTS (CIP)

Burlingame Hills SMD Expenditure & Revenue Comparison



* Revenue may include: property taxes, interest, HOPTR, SSC, SRF reimbursement, miscellaneous fees.

PROPOSED RATE

	Sewer Service Rate (\$/Year Per Residential Unit)	
	FY 2017-18	Proposed Rate
		FY 2018-19
Burlingame Hills Sewer Maintenance District	\$1,595	\$1,675 (+ \$80)

The proposed rate includes a 5% increase, equating to an \$80/equivalent residential unit or \$6.67/month/equivalent residential unit increase.



RATE SETTING TIMELINE

Key Dates	Actions
April 30	Sent all property owners information about proposed rates and timing of meetings with property owners.
May 14	Meetings with property owners to discuss the proposed rates, factors involved in establishing rates, and seek property owner input.
June 5	Introduce Ordinance with proposed sewer service rates and set Public Hearing for July 24.
June 8	Send Prop 218 notice (45 days prior to public hearing) to property owners with proposed rates.
July 24	Hold public hearing, adopt Ordinance setting rates, and adopt FY 2018-19 Sewer Service Charges Report based on the adopted rate.



Emergency Response

24 Hours a Day, 7 Days a Week

Mainline (Blockage)

Customer Sewer Laterals

**Call (650) 363-4100 to Report
Sewer Overflows**



CONTACT INFORMATION

Please e-mail your comments and questions to:

sewers@smcgov.org

Information is available on our website at:

<http://www.smcgov.org/sewers>



THANK YOU!

QUESTIONS?



**The toilet is only meant
to flush the three P's—
pee, poop and paper.**

COUNTY OF SAN MATEO

