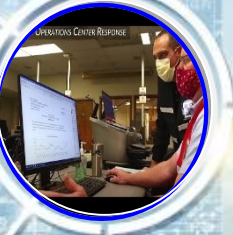




San Mateo County Multijurisdictional Hazard Mitigation Plan-Update

****HOW TO REVIEW THE DRAFT PLAN****

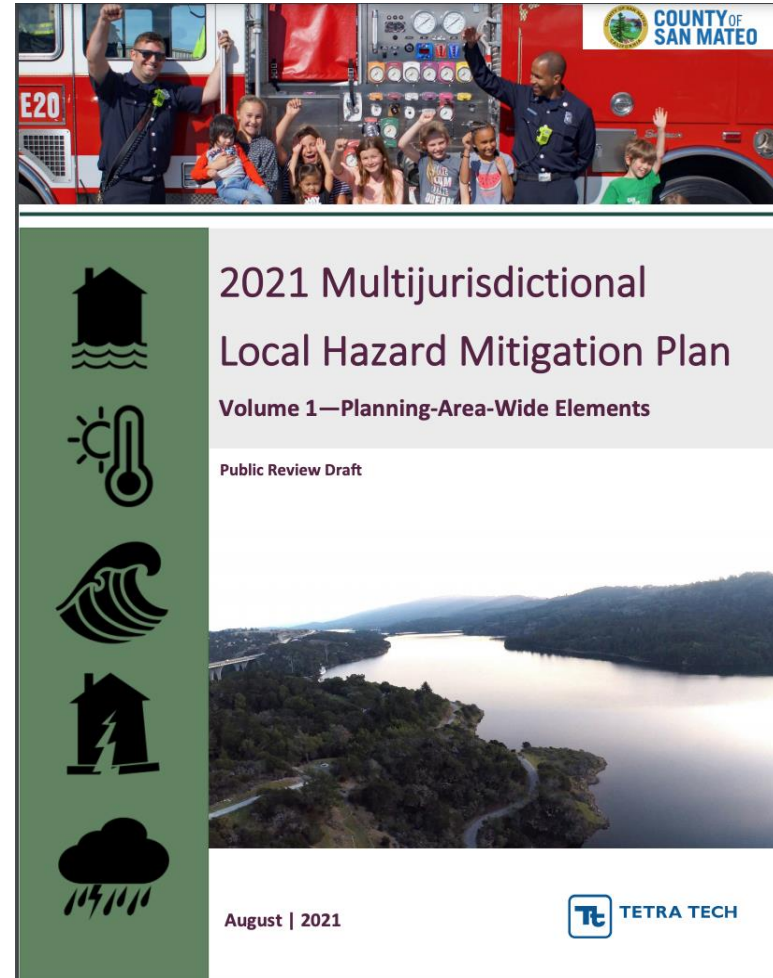
***Public Comment Period:
August 5 – 23, 2021***



Plan Format

Like the 2016 Plan (2-Volume format):

- **Volume 1**= Includes everything that applies to the whole planning area (countywide)
 - *Description of the planning process*
 - *Risk Assessment*
 - *GP's, Goals and Objectives*
 - *County-wide Actions*
 - *Plan Maintenance Strategy*
- **Volume 2** = Includes everything that is Jurisdiction-specific (San Mateo County, Municipalities & Special Districts)
 - *Community Profile*
 - *Core Capability Assessment*
 - *Risk Ranking*
 - *Action Plan*



- Presented in 3 Parts
- Part 1: Background and Methods
 - *Introduction*
 - *Changes made for the plan update*
 - *Plan development methodology*
 - *San Mateo County profile*
 - *Hazards of Concern*
 - *Relevant Laws, Ordinances and Programs*

CONTENTS

Executive Summary	xix
Part 1. BACKGROUND AND METHODS	
1. Introduction.....	1-1
1.1 Why Prepare This Plan?	1-1
1.2 Who Will Benefit from This Plan?.....	1-2
1.3 How to Use This Plan.....	1-2
2. San Mateo County Hazard Mitigation Planning.....	2-1
2.1 Previous Plans	2-1
2.2 Reasons for the 2021 Update.....	2-2
2.3 Plan Changes Crosswalk	2-4
3. Plan Development Methodology	3-1
3.1 Formation of the Core Planning Team	3-1
3.2 Establishment of the Planning Partnership.....	3-2
3.3 Defining the Planning Area.....	3-3
3.4 The Steering Committee.....	3-3
3.5 Coordination with Other Agencies.....	3-4
3.6 Review of Existing Programs.....	3-4
3.7 Public Involvement.....	3-5
3.8 Plan Development Chronology/Milestones	3-14
4. San Mateo County Profile.....	4-1
4.1 Historical Overview.....	4-1
4.2 Physical Setting.....	4-3
4.3 Development	4-6
4.4 Demographics.....	4-13
4.5 Economy.....	4-18
5. Hazards of Concern.....	5-1
5.1 Major Past Hazard Events	5-1
5.2 Identified Hazards of Concern.....	5-2
6. Relevant Laws, Ordinances and Programs	6-1
6.1 Relevant Federal and State Agencies, Programs and Regulations	6-1
6.2 Local Plans, Reports and Codes	6-6
6.3 Local Capability Assessment	6-6
6.4 Hazard Mitigation Capabilities for Future Development	6-8

Volume 1: The Risk Assessment

- This Plan Fully Assesses the Following Natural Hazards:

- *Dam Failure*
- *Drought*
- *Earthquake*
- *Flood*
- *Landslide*
- *Sea-Level Rise*
- *Severe Weather (Atmospheric Rivers, Heat, Fog, Thunderstorms, and Wind)*
- *Tsunami*
- *Wildfire*



The Risk Assessment (Part 2) also includes:

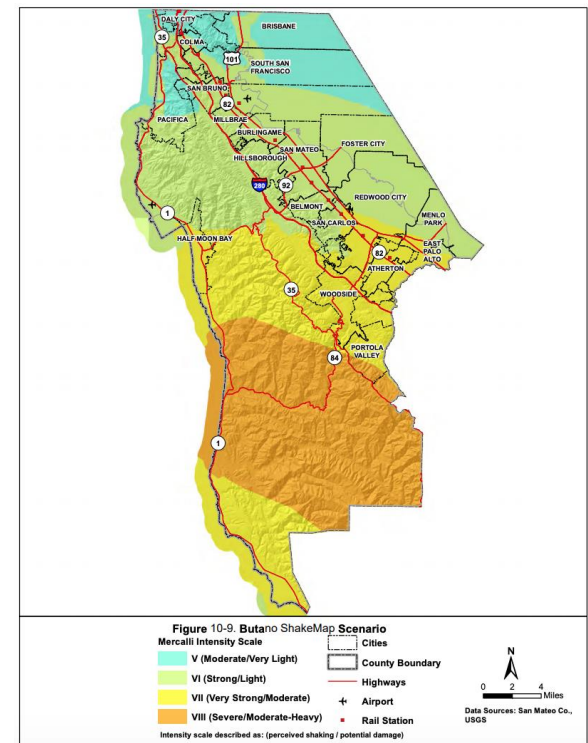
- A profile of Climate Change impacts to each of the fully assessed Hazards (except SLR)
- A profile (not full assessment) of other hazards of interest:
 - *Public Health/Pandemic*
 - *Terrorism*
 - *Cyber*
 - *Communication Failure*
 - *Haz Mat*
 - *Pipeline and Tank Failure*
 - *Aircraft Incidents*
- A natural hazard Risk Ranking for each participating jurisdiction (both baseline and with an equity lens)

Volume 1: Hazard Profiles

Each Hazard Profile includes the following components:

- General background of the hazard
- Hazard Profile
 - *Past events*
 - *Location*
 - *Frequency*
 - *Severity*
 - *Warning Time*
- Exposure Analysis (People, Property, Critical Facilities and Environment)
- Vulnerability Analysis (loss estimation)
- Future Trends in Development
- Scenario
- Issues

10. Earthquake	10-1
10.1 General Background.....	10-1
10.2 Hazard Profile.....	10-6
10.3 Exposure.....	10-12
10.4 Vulnerability.....	10-13
10.5 Future Trends in Development.....	10-28
10.6 Scenario.....	10-29
10.7 Issues.....	10-29



Volume 1: The Mitigation Plan

- Guiding Principles, Goals and Objectives
- Mitigation Best Practices
- Recommended Planning-Area Wide Actions
 - *Prioritized*
 - *Classification of Actions*
- Plan Adoption and Implementation

Part 3. MITIGATION PLAN	
20. Mission Statement, Goals and Objectives.....	20-1
20.1 Guiding Principles	20-1
20.2 Goals.....	20-1
20.3 Objectives	20-2
<hr/>	
TETRA TECH	vii
<hr/>	
2021 Multijurisdictional Local Hazard Mitigation Plan	Contents
<hr/>	
21. Mitigation Best Practices.....	21-1
21.1 Mitigation Best Practices.....	21-1
21.2 Adaptive Capacity	21-10
22. Recommended Planning-Area-Wide Actions.....	22-1
22.1 Recommended Mitigation Actions for All Partners	22-1
22.2 Area-Wide Action Plan Prioritization	22-2
22.3 Classification of Area-Wide Mitigation Actions.....	22-4
23. Plan Adoption and Implementation	23-1
23.1 Plan Adoption.....	23-1
23.2 Plan Maintenance Strategy	23-1
References	1

Countywide Mitigation Actions

- The Plan identifies 6 Countywide actions
- These are actions that benefit the entire planning partnership
- High-level, over-arching types of actions
- Action examples include:
 - *1 website action*
 - *2 outreach related actions*
 - *2 GIS/Geospatial actions*
 - *1 Grant coordination action*

Table 22-1. Action Plan—Countywide Mitigation Initiatives

Applies to new or existing assets	Hazards Mitigated	Objectives Met	Lead Agency	Support Agency	Estimated Cost	Sources of Funding	Timeline
CW-1: Continue to maintain a multilingual and culturally appropriate website that will house the multijurisdictional local hazard mitigation plan, progress reports and all components of the plan's maintenance strategy to provide planning partners and the public with ongoing access to the plan and its implementation.							
New and Existing	Dam Failure, Drought, Earthquake, Flood, Landslide, Severe Weather, Sea-Level Rise, Tsunami, Wildfire	2, 3, 4, 5, 9, 10, 12	San Mateo County	Planning Partners	Low	Operating Budgets	Ongoing
CW-2: Continue to leverage/support/enhance multilingual and culturally appropriate, ongoing, regional public education and awareness programs, such as SMCAAlert, ZoneHaven, and CERT, as a method to educate the public on risk, risk reduction, and community resilience.							
New and Existing	Dam Failure, Drought, Earthquake, Flood, Landslide, Severe Weather, Sea-Level Rise, Tsunami, Wildfire	2, 3, 4, 5, 9, 10, 11, 12	San Mateo County	Planning Partners	Low	Operating Budgets	Ongoing
CW-3: Provide technical support and coordination for available grant funding opportunities to the planning partnership.							
New and Existing	Dam Failure, Drought, Earthquake, Flood, Landslide, Severe Weather, Sea-Level Rise, Tsunami, Wildfire	1, 2, 3, 4, 5, 6, 7, 8, 9, 10, 11, 12, 13, 14	San Mateo County	Planning Partners	Low	Operating Budgets	Ongoing
CW-4: Develop a standardized GIS dataset for modeling hazards and impacts for regional and jurisdictional assessment purposes. Implement a program to digitally map historical hazard events and future hazard events and impacts.							
New	Dam Failure, Drought, Earthquake, Flood, Landslide, Severe Weather, Sea-Level Rise, Tsunami, Wildfire	1, 2, 5, 6, 7, 12	San Mateo County	Planning Partners	Low	Operating Budgets	Ongoing
CW-5: Develop a multilingual and culturally appropriate business outreach program, in concert with existing business organizations and planning partners, to educate businesses on risk and risk reduction and to identify policies and programs to help businesses become more resilient.							
New and Existing	Dam Failure, Drought, Earthquake, Flood, Landslide, Severe Weather, Sea-Level Rise, Tsunami, Wildfire	2, 3, 4, 5, 9, 10, 12	San Mateo County	Planning Partners	Low	Operating Budgets	Ongoing
CW-6: Develop model policy templates to assist with coordinated development and implementation of resiliency policies, such as the Safety Elements.							
New	Dam Failure, Drought, Earthquake, Flood, Landslide, Severe Weather, Sea-Level Rise, Tsunami, Wildfire	1, 2, 5, 6, 7, 12	San Mateo County	Planning Partners	Low	Operating Budgets	Ongoing

Plan Maintenance Strategy

Table 23-1. Plan Maintenance Matrix

Task	Approach	Timeline	Lead Responsibility	Support Responsibility
Monitoring	Prepare status updates and action implementation tracking as part of annual progress reporting.	Annually after the adoption and final approval of the plan by FEMA.	San Mateo County DEM	Designated point of contact for each planning partner
	As grant opportunities present themselves, consider options to pursue grants to fund actions identified in this plan	As grants become available	San Mateo County DEM	Designated point of contact for each planning partner
Annual Progress Reporting	Review the status of previous actions as submitted by the monitoring task lead and assess the effectiveness of the plan; compile the annual progress report; assess appropriate action for preparing next hazard mitigation plan update.	Annually after final plan approval by FEMA, or upon a major disaster or a comprehensive update to a general plan	San Mateo County and all planning partners	Designated point of contact for each planning partner
CRS Subcommittee	Review and approve the annual progress reports for the CRS participating communities within the planning partnership	Annually	<ul style="list-style-type: none"> • Burlingame • East Palo Alto • Pacifica • San Carlos • San Mateo County 	San Mateo County DEM
Plan Update	Reconvene the planning partners, at a minimum, every 5 years to guide a comprehensive update to review and revise the plan.	Every 5 years or upon comprehensive update to general plan or major disaster	The governing body for all planning partners covered by this plan	Designated point of contact for each planning partner
Continuing Public Involvement	Provide the public access to the implementation of this plan, principally through the plan website. https://cmo.smcgov.org/multijurisdictional-local-hazard-mitigation-plan	Annually	San Mateo County DEM	All planning partners will provide a link to County's hazard mitigation plan website on their own websites
Plan Integration	Integrate relevant information from hazard mitigation plan into other plans and programs where viable as opportunities arise	Ongoing	The governing body for all planning partners covered by this plan	Designated point of contact for each planning partner

Why this Level of Detail?

- The FEMA Plan Review Tool
- Crosswalks the Plan’s content to the section 201.6, 44CFR requirements.
- The Plan must show compliance for 20 elements and 26 sub-elements for **all** planning partners!
- Both the State and FEMA must agree with the cross-walked components.

REGION IX LOCAL HAZARD MITIGATION PLAN REVIEW TOOL

Updated 12/4/2019

The *Local Hazard Mitigation Plan Review Tool* demonstrates how the Local Hazard Mitigation Plan meets the regulation in 44 CFR §201.6 and offers State and FEMA Mitigation Planners an opportunity to provide feedback to the community.

- The **Regulation Checklist** provides a summary of FEMA’s evaluation of whether the plan has addressed all requirements.
- The **Plan Assessment** identifies the plan’s strengths as well as documents areas for future improvement. This section also includes a list of resources for implementation of the plan.
- The **Multi-Jurisdiction Summary Sheet** is a mandatory worksheet for multi-jurisdictional plans that is used to document which jurisdictions are eligible to adopt the plan.
- The **Hazard Identification and Risk Assessment Matrix** is a tool for plan reviewers to identify if all components of Element B are met.

Jurisdiction:	Title of Plan:	Date of Plan:
Local Point of Contact:		Address:
Title:		

SECTION 1: REGULATION CHECKLIST

INSTRUCTIONS: The Regulation Checklist must be completed by FEMA. The purpose of the Checklist is to identify the location of relevant or applicable content in the plan by element/sub-element and to determine if each requirement has been ‘Met’ or ‘Not Met.’ The ‘Required Revisions’ summary at the bottom of each element must be completed by FEMA to provide a clear explanation of the revisions that are required for plan approval. Required revisions must be explained for each plan sub-element that is ‘Not Met.’ Sub-elements should be referenced in each summary by using the appropriate numbers (A1, B3, etc.), where applicable. Requirements for each Element and sub-element are described in detail in the *Local Plan Review Guide* in Section 4, Regulation Checklist.

1. REGULATION CHECKLIST Regulation (44 CFR 201.6 Local Mitigation Plans)		Location in Plan (section and/or page number)	Met	Not Met
ELEMENT A. PLANNING PROCESS				
A1. Does the plan document the planning process, including how it was prepared and who was involved in the process for each jurisdiction? (Requirement §201.6(c)(1))	a. Does the plan provide documentation of how the plan was prepared? This documentation must include the schedule or timeframe and activities that made up the plan’s development as well as who was involved.	Basic Plan Section 1.6, 2.1-2.6, Appendix E; Jurisdiction Annexes Section 1.1	X	

Due to the size of the files, we have created the following stand-alone documents to make them easier to download:

- Volume 2a - Planning Partner Annexes San Mateo County and Municipalities: Atherton – Daly City
- Volume 2b - Planning Partner Annexes Municipalities: East Palo Alto – Pacifica
- Volume 2c - Planning Partner Annexes Municipalities: Portola Valley – Woodside
- Volume 2d - Planning Partner Annexes Special-Purpose Districts
- Volume 2e - Appendices