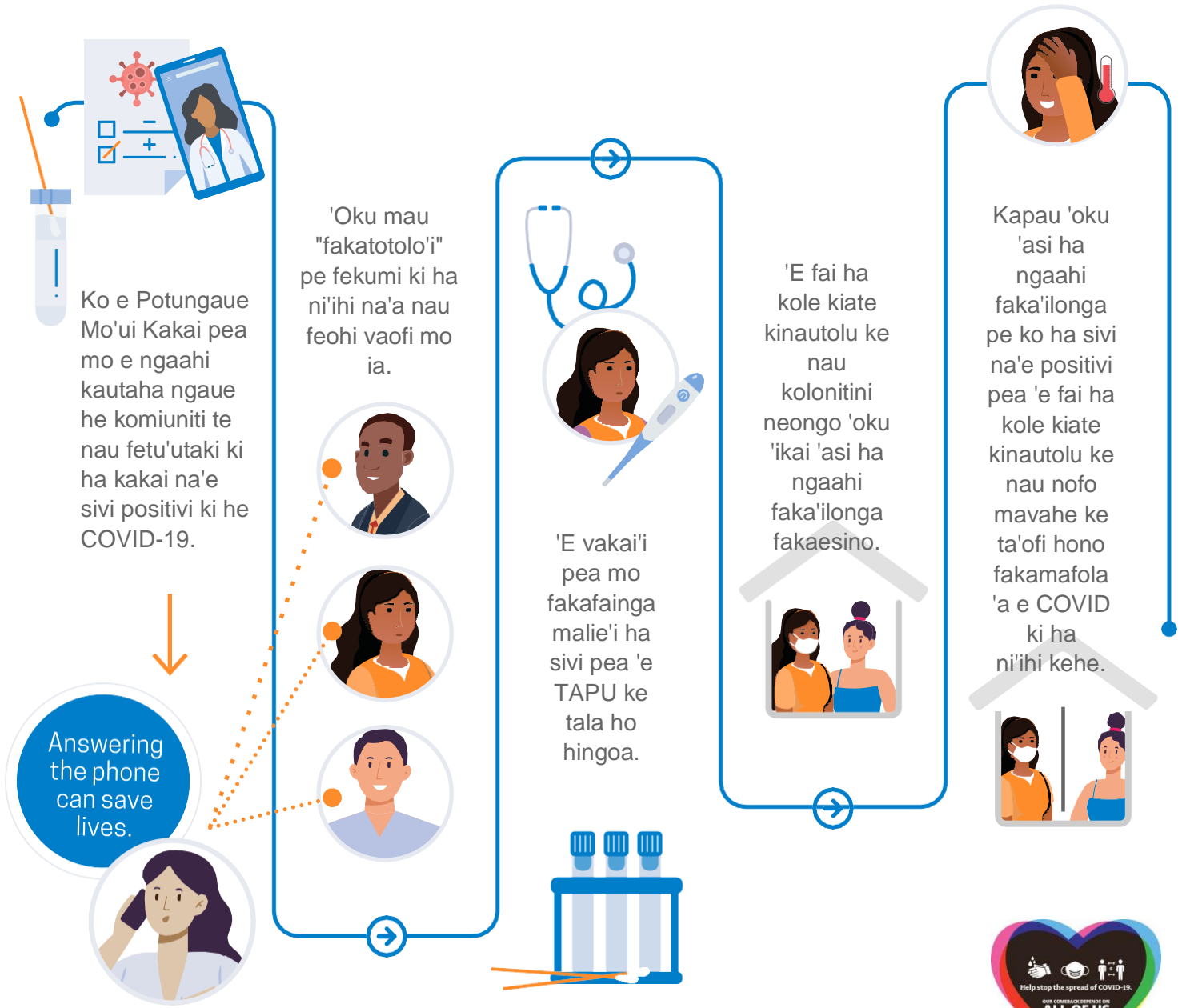


KO E HA 'A E FAKATOTOLO HALANGA?

'Oku malu'i 'aupito 'a e sivi pea mo lilo 'a e fakatoto! 'Oku 'ikai ha fehu'i ia ki ho fika ngaue pe ko ho tu'unga faka'imikuleisini.



**SAN MATEO
COUNTY HEALTH**

Telefoni 2-1-1 kapau 'oku 'ikai-ha-fakamaki, ikai-fakametikolo
smchealth.org/coronavirus