



# Coyote Point Playground Survey

*Choose between two final concepts*

REVITALIZE COYOTE POINT

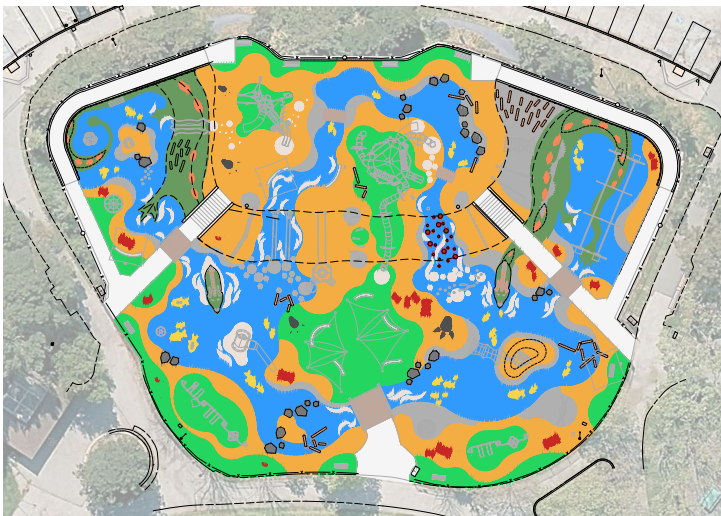


**Thank you** for your help in bringing a new playground to Coyote Point for another generation to enjoy! With feedback from past community surveys, we've narrowed down the design for the new playground to two concepts.

Both concepts use rubberized surfacing to create an imaginative world. Each has a play area for 2–5 year-olds in the upper left and repurposes Magic Mountain Playground's iconic dragon heads.

## CONCEPT A

### "Magical Adventure in a Seaside Land"



The rubberized surface creates a seaside world with 'crossings' over the blue 'water.' Visitors range freely with no assigned path. The lower area focuses on active play, including a 50-foot zipline for all abilities.

## CONCEPT B

### "A Path of Adventure Thru a Magical Land"



The rubberized surface creates a balance of 'water' and 'land' with a path to guide visitors through it. The lower area balances active play with sensory, music, and interactive play. Additional shade and synthetic grass seating areas are included.

The following pages detail surfacing, amenities, and play structures for both concepts. All images are given as examples—the final features will be customized as needed to fit the playground.

When you finish reviewing this document, you'll be asked to answer a survey question stating your preference for one concept or the other.

# Concept A: “Magical Adventure in a Seaside Land” SURFACE & AMENITIES

## RUBBERIZED SURFACING PLAN



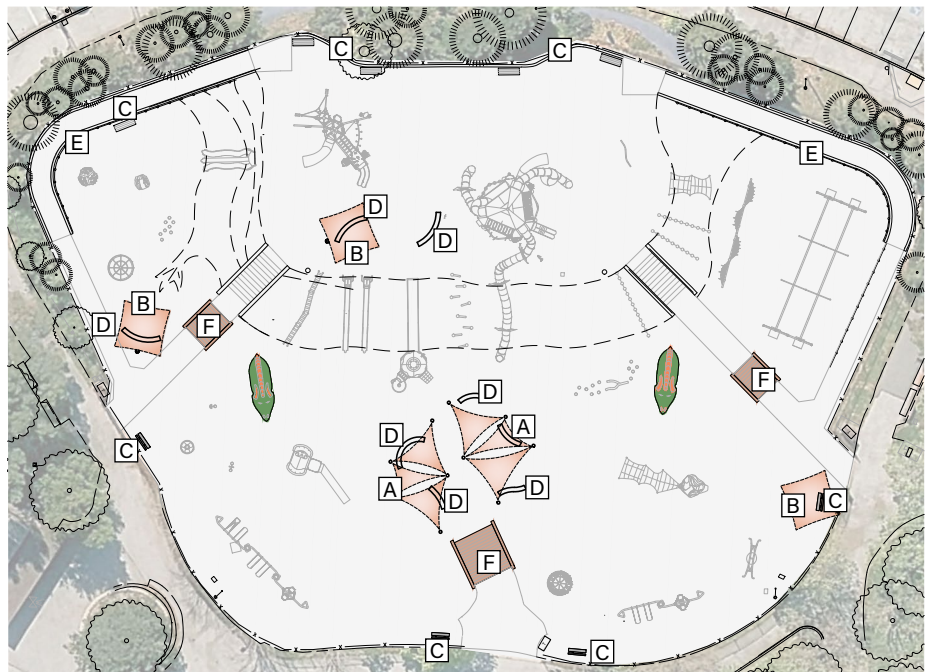
## AMENITIES

- A** TRIANGLE SHADE SAILS
- B** CANTILEVER SHADE SAILS
- C** BENCHES
- D** CONCRETE SEATWALLS
- E** VERTICAL PICKET METAL FENCING

### Not included in Concept B:



**F**  
COLOR  
CONCRETE FAUX  
BRIDGE  
BOARD PLANK  
STAMP/ FLUSH



# Concept A: "Magical Adventure in a Seaside Land"

## PLAY STRUCTURES - Upper Play Area & Hillside

### UPPER PLAY AREA



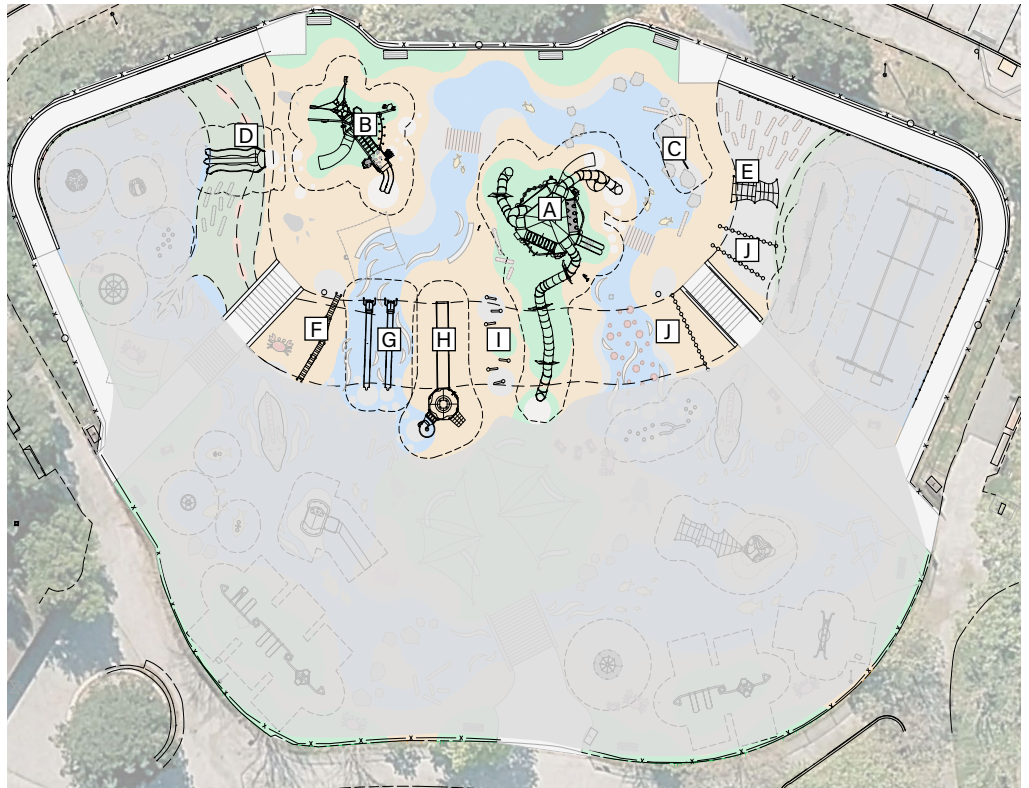
**PLAY STRUCTURE EXTENDED SLIDE** ●



**PLAY STRUCTURE SUMMIT** ●



**CURVED BALANCE BEAM** ●



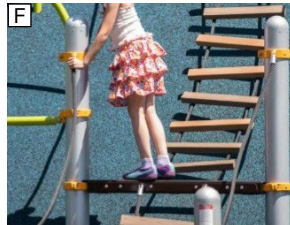
### HILLSIDE PLAY AREA



**CLOUDBURST SLIDE / EXTENDED**



**CLIMBING ROPE NET**



**CLIMBING LADDER**



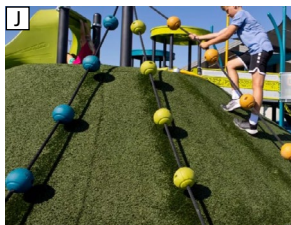
**SURF SLIDE / EXTENDED**



**TOWER EXTENDED BRIDGE SPIRAL SLIDE CLIMBING**



**CLIMBING ARCHES (8)**



**CLIMBING BALL ROPE (3)**

● ACCESSIBLE EQUIPMENT

# Concept A: “Magical Adventure in a Seaside Land”

## PLAY STRUCTURES - Lower Play Area

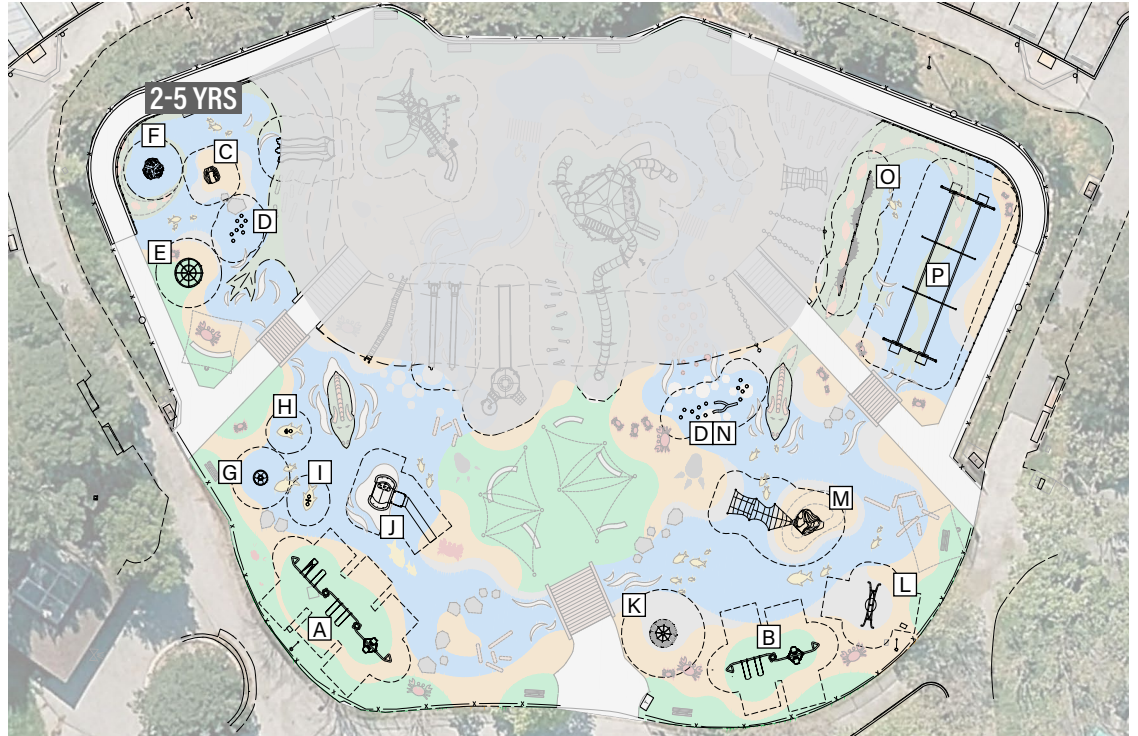
### LOWER PLAY AREA



**HEdra SWING FRAME (3)** ●  
STANDARD SWING (3)  
BUCKET SWING (1)  
FRIENDSHIP SWING (1)



**HEdra SWING FRAME (2)** ●  
STANDARD SWING (2)  
FRIENDSHIP SWING (1)



**CLIMBING ROCK**



**LOG STEPPERS (20)**



**WE-GO-ROUND** ●



**COZY DOME** ●



**REVI ROCK BOUNCER** ●



**BOBBLE RIDE SINGLE**



**BOBBLE RIDE DOUBLE**



**12\"/>**



**GLOBAL MOTION** ●



**OODLE SWING** ●



**PINNACLE ROCK (1)**  
EXTENDED CLIMBING ROPE



**LOG BALANCE BEAM**



**HEMISPHERE CLIMBER (2)**



**50' ZIPLINE ASSISTED (1)** ●  
**50' ZIPLINE (1)**

# Concept B: "A Path of Adventure Thru a Magical Land"

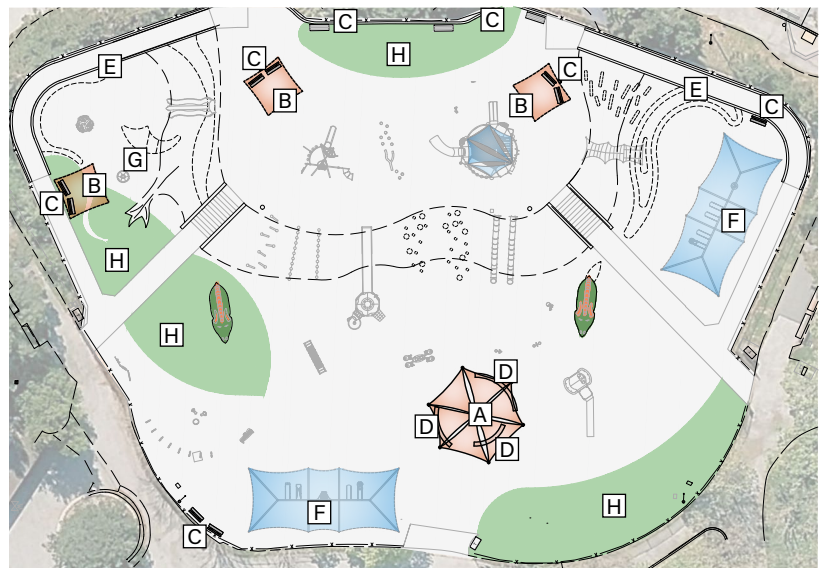
## SURFACE & AMENITIES

### RUBBERIZED SURFACING PLAN

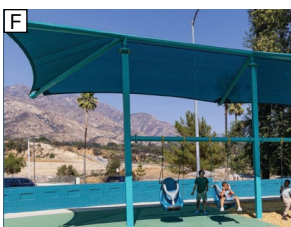


### AMENITIES

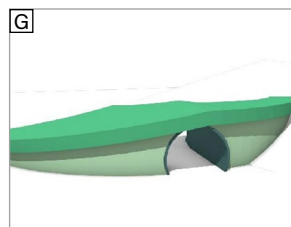
- A** TRIANGLE SHADE SAILS
- B** CANTILEVER SHADE SAILS
- C** BENCHES
- D** CONCRETE SEATWALLS
- E** VERTICAL PICKET METAL FENCING



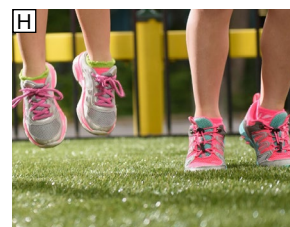
### Not included in Concept A:



**ADDITIONAL PLAY STRUCTURE SHADE**



**DRAGON WING TUNNEL FEATURE**



**SYNTHETIC TURF**

# Concept B: "A Path of Adventure Thru a Magical Land"

## PLAY STRUCTURES - Upper Play Area & Hillside

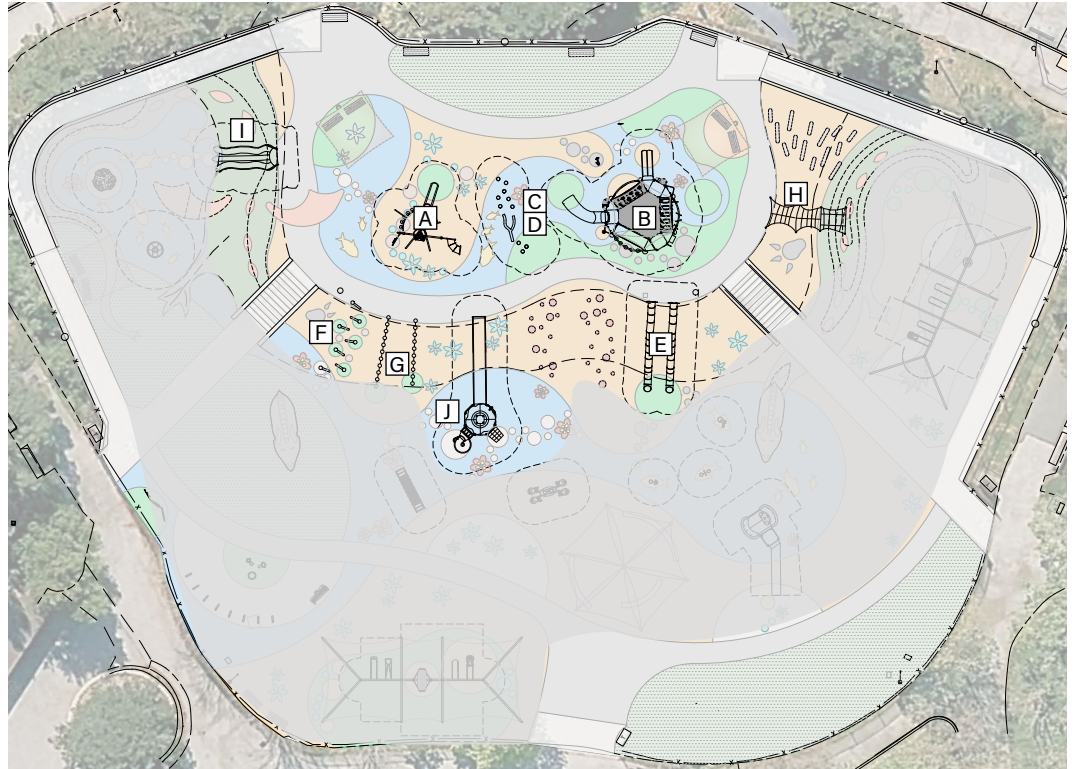
### UPPER PLAY AREA



**PLAY STRUCTURE**  
3 ARCH



**PLAY STRUCTURE** ●  
WITH SHADE



**LOG BALANCE BEAM**



**LOG STEPPERS (10)**

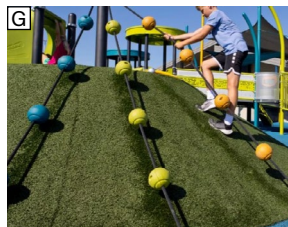
### HILLSIDE PLAY AREA



**TUNNEL SLIDE (2)**



**CLIMBING ARCHES (7)**



**CLIMBING BALL ROPE (2)**



**CLIMBING ROPE NET**



**CLOUDBURST SLIDE / ●**  
**EXTENDED**



**TOWER**  
**EXTENDED BRIDGE**  
**SPIRAL SLIDE**

● ACCESSIBLE EQUIPMENT

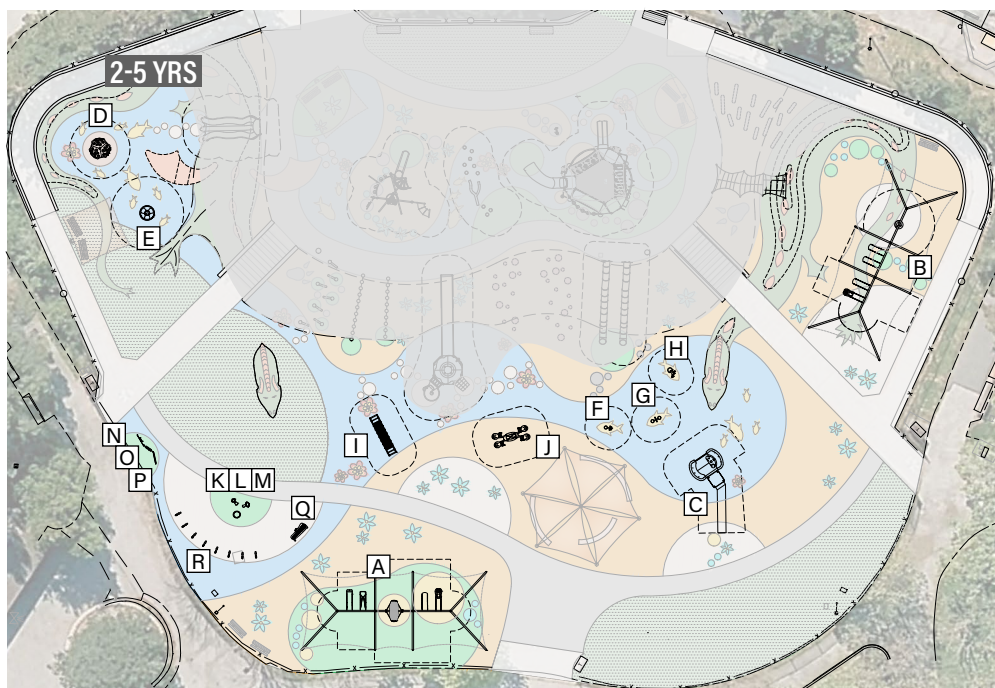
# Concept B: "A Path of Adventure Thru a Magical Land"

## PLAY STRUCTURES - Lower Play Area

### LOWER PLAY AREA



**A**  
**SINGLE POST SWING FRAME / SHADE (3)** ●  
 STANDARD SWING (1)  
 BUCKET SWING (1)  
 FLEXX SWING (1)  
 FULL BUCKET SEAT (1)  
 MOLDED BUCKET/ HARNESS SEAT (1)



**B**  
**SINGLE POST SWING FRAME / SHADE (3)** ●  
 STANDARD SWING (3)  
 MOLDED BUCKET / HARNESS SEAT (1)  
 ARCH TIRE SWING (1)



**C**  
**12" SWAY FUN GLIDER** ●



**D**  
**COZY DOME** ●



**E**  
**WHEEL SPINNER** ●



**F**  
**BOBBLE RIDE SINGLE**



**G**  
**BOBBLE RIDE DOUBLE**



**H**  
**CYCLER** ●



**I**  
**ROLLER TABLE** ●



**J**  
**WE-SAW** ●



**K**  
**GOBLET DRUM** ●



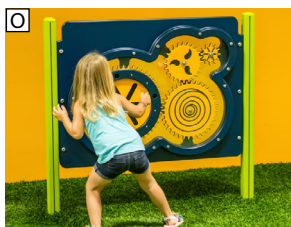
**L**  
**KETTLE DRUM** ●



**M**  
**KUNDU DRUM** ●



**N**  
**TIC-TAC-TOE PANEL** ●



**O**  
**GEAR PANEL** ●



**P**  
**RAIN SOUND PANEL** ●



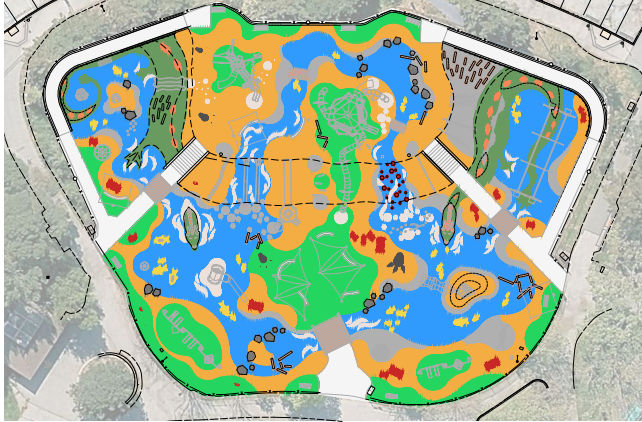
**Q**  
**METALLOPHONE** ●



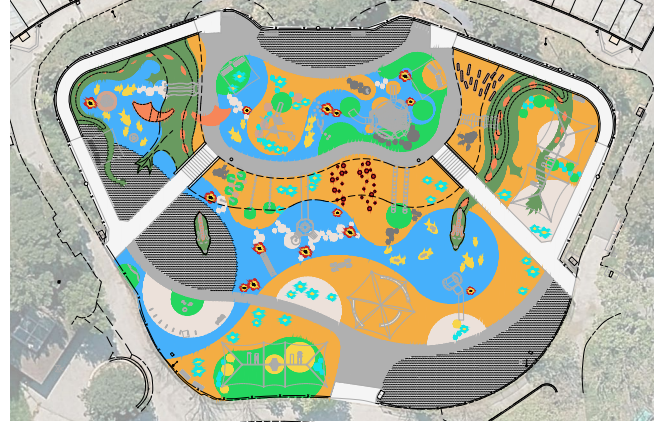
**R**  
**VIBRA CHIMES** ●

# Concept A & B: Key Differences

## CONCEPT A "Magical Adventure in a Seaside Land"



## CONCEPT B "A Path of Adventure Thru a Magical Land"



<b>Theme</b>	Water is central.	A balance of water and land.
<b>Zipline</b>	✓ 50' assisted + independent	✗ Not included
<b>Musical Play</b>	✗ Not included	✓ Full instrument cluster
<b>Surfacing</b>	Fully rubberized pour-in-place	Rubberized + synthetic turf
<b>Shade</b>	Shade structures + shade sails	Shaded structures + shade sails + shaded play structures

Ready to choose?



Visit <https://www.surveymonkey.com/r/CP-Playground>  
to let us know if you prefer Concept A or Concept B