



REIMAGINE DUMBARTON

San Mateo County BPAC
February 19, 2026

In Partnership with

Kimley»Horn



- Project Overview
- Why a Busway?
- Community Engagement

Project Overview

- The Dumbarton Rail Corridor (DRC) (Peninsula side) is a 5-mile inactive rail corridor that currently creates a barrier between communities in Southeast San Mateo County
- Since its acquisition by the District in the early 1990s, the DRC has been the subject of numerous studies to revive the corridor
- Previous studies and outreach consistently highlighted the need for:
 - Better local connectivity, including safer walking and biking
 - Improved crossings
 - Faster, more reliable transit for everyday trips
 - Near-term, cost-effective solutions



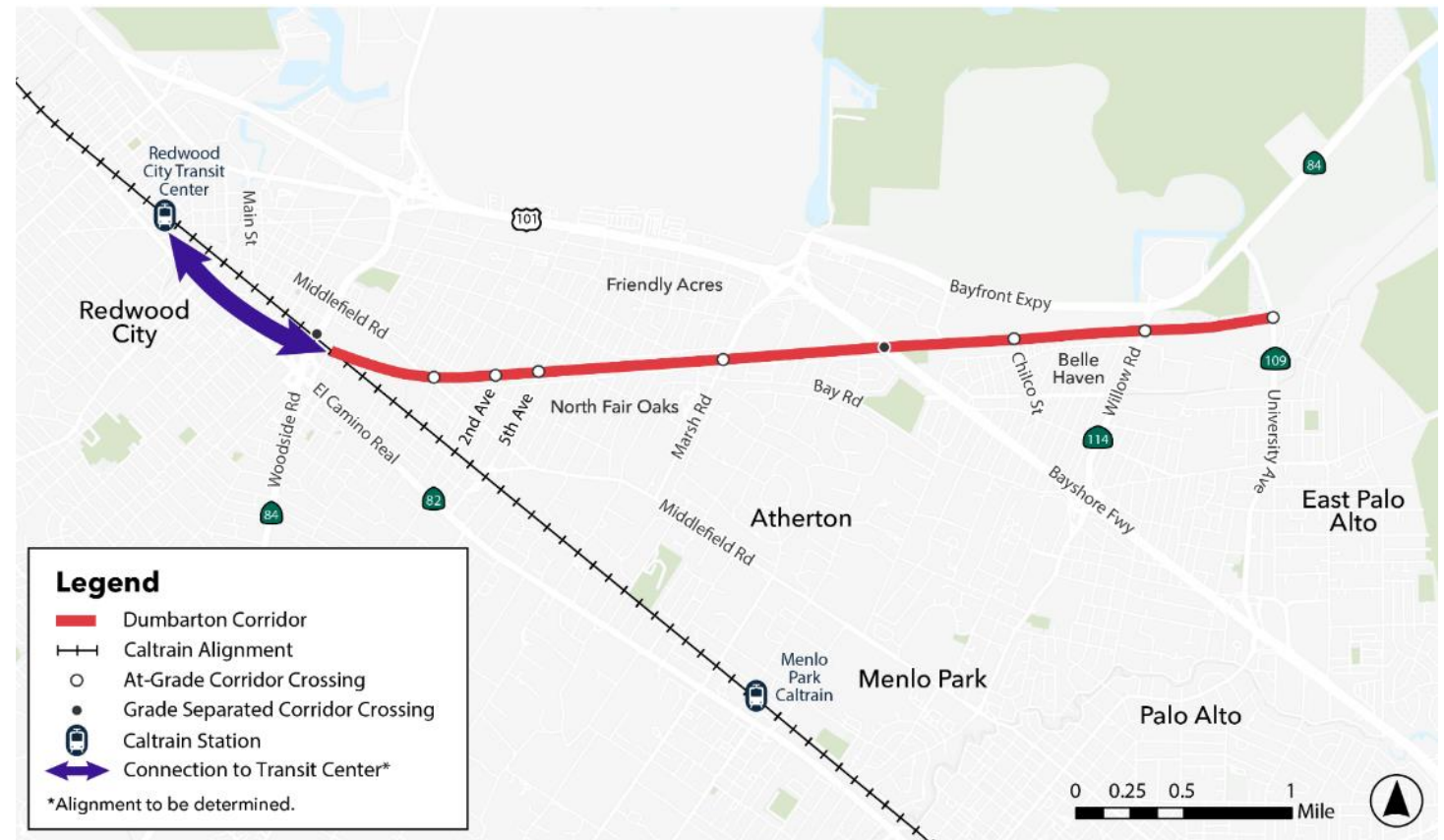
DRC today near Chilco Way

Project Overview and Study Area

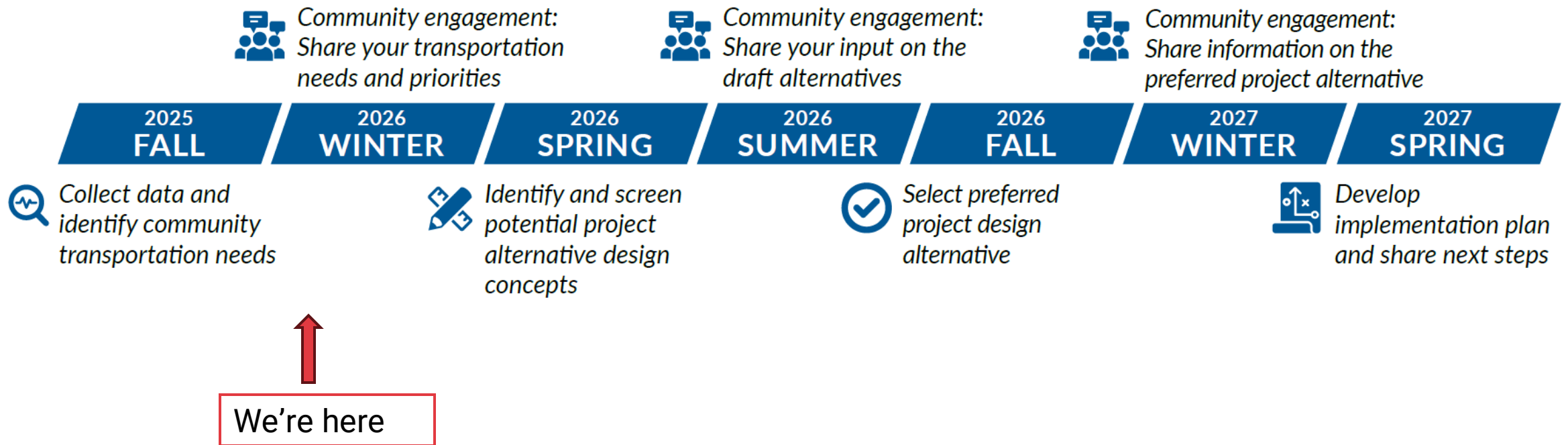
The Reimagine Dumbarton project envisions converting the Dumbarton rail corridor into a rapid bus line, with additional walking & bicycle connections along and across the corridor.

Project purpose:

- Assess feasibility and community interest
- Refine the vision to address community needs and technical constraints
- Develop a project to move forward into further design and construction phases



Feasibility Study Schedule



Reimagine Dumbarton is guided by the following principles:



Fundable – rooted in realities of current funding landscape



Implementable – delivering improvements in the near-term



Responsive – building on what we have heard from the community



Effective – able to meet current and future travel demand needs

Why a Busway?

What is a Busway?

G Line (Los Angeles)



Wikipedia - [https://en.wikipedia.org/wiki/G_Line_\(Los_Angeles_Metro\)](https://en.wikipedia.org/wiki/G_Line_(Los_Angeles_Metro))

- 18 miles with 17 stations
- **Uses part of Southern Pacific Railroad's former Burbank Branch Line**
- Connects to other rail services and includes parallel **bike path**

U of M Transitway (Minneapolis)



flickr - <https://www.flickr.com/photos/diversey/43898973432/in/photostream/>

- 2.6-mile busway between University of Minnesota's Minneapolis and St Paul campuses
- **Limited to buses, bicycles, and emergency vehicles**

SURF! (Monterey)



MST - <https://mst.org/2020-annual-report/surf-busway-plans/>

- In construction now: **6-mile, bus only roadway along Monterey Branch Line right-of-way**
- **Preserving tracks for future rail use**
- Expected to start service in early 2028

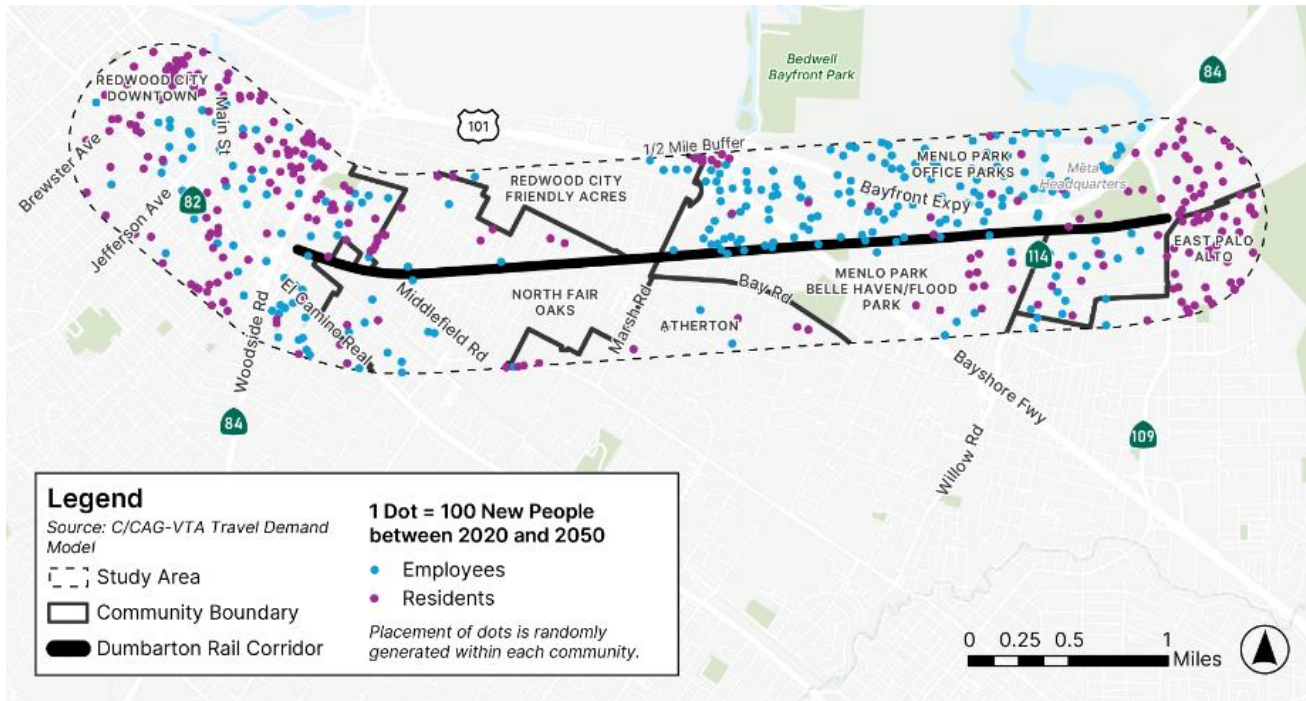
Why a Busway?

- Fast, reliable transit service
- Improved connections and advances equity
- Potential for near-term implementation
- Flexible and compatible with active transportation
- Supports environmental justice
- Cost-effective
- Funding and partnership readiness
- Does not preclude future regional rail service



Meets Travel Needs Today and in the Future

Forecast Population and Employment Growth between 2020 and 2050 (C/CAG-VTA's Travel Demand Model)



- **High growth corridor**
 - Forecasts show both employment and residential growth
- **Increasing demand for more local trip**
 - Average daily travel between Redwood City and East Palo Alto increased by more than 30% since 2019
- **Efficient transit connections**
 - A dedicated busway could efficiently serve these emerging travel markets while improving connectivity to regional destinations

Community Engagement

Phase	Timing	Purpose
Phase I – Broad Engagement	Jan-Mar 2026	<ul style="list-style-type: none">• Raise awareness and confirm community needs and priorities• Use input to shape evaluation criteria and initial alternatives
Phase II – Deep Engagement	Summer – Fall 2026	<ul style="list-style-type: none">• Present draft design alternatives• Gather detailed feedback on trade-offs and preferences
Phase III – Information Sharing	Winter 2027	<ul style="list-style-type: none">• Share final Feasibility Study and preferred alternative• Close the loop with communities and decision-makers

- Community meetings and pop-up events at community centers, transit hubs, and local gatherings
- Community-based organization (CBO) partnerships to co-lead outreach and host events
- “Roadshow” presentations to commissions and partner agencies
- Social media and e-newsletter updates, FAQs and factsheets
- Project webpage as the central information and feedback hub
- Multilingual surveys (online and paper)
- Briefings to elected officials and stakeholders
- Outreach summaries after each round, showing how community input informed Project decisions

- Upcoming in-person community meetings:
 - Thursday, February 26 – East Palo Alto YMCA
- Upcoming community pop-ups:
 - 2/19 - Atherton Library Musical Jamboree & Lunar New Year
 - 2/20 - Standing on the Shoulders of Giants Celebration at EPACENTER
 - 2/21 - El Concilio's Mercadito clothing pop-up
 - 2/28 - Redwood City Lunar New Year

Take the survey through March 6



surveymonkey.com/r/ReimagineDumbarton

Thank You!

Contact us here

Website:
www.samtrans.com/dumbarton

Email Us:
Dumbarton@samtrans.com



This project is made possible by local transportation sales tax dollars from the San Mateo County Transportation Authority and Regional Measure 3 funds through the Metropolitan Transportation Commission.