

*CALIFORNIA
HIGHWAY PATROL
REDWOOD CITY AREA*



STRATEGIC PLAN

PILLARS

- C – Contributing to a safe and secure California
- H – Honoring our commitment to the State of California and its communities
- P – Provide a safe and productive workplace to ensure employee wellness





CALIFORNIA HIGHWAY PATROL

*CHP – REDWOOD CITY AREA
CRASH INVESTIGATION 2023-2025*

2023 – 15

2024 – 19

2025 - 35





ENFORCEMENT STATISTICS

2023-214

2024 -224

2025-471



VISION

- Implement one Community Oriented Police Service Officer by mid year 2026
- Conduct at least 3 Education and Enforcement details in conjunction with the San Mateo County Sheriff's Office
- Increase awareness by corresponding with local key contacts (County Board of Supervisors, Congressman and Senators)



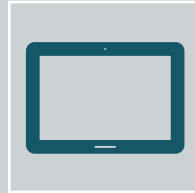


COMMUNITY ORIENTED POLICING

THANK YOU



Patrick Etchebarne



650-779-2700



petchebarne@chp.ca.gov