

Moss Beach

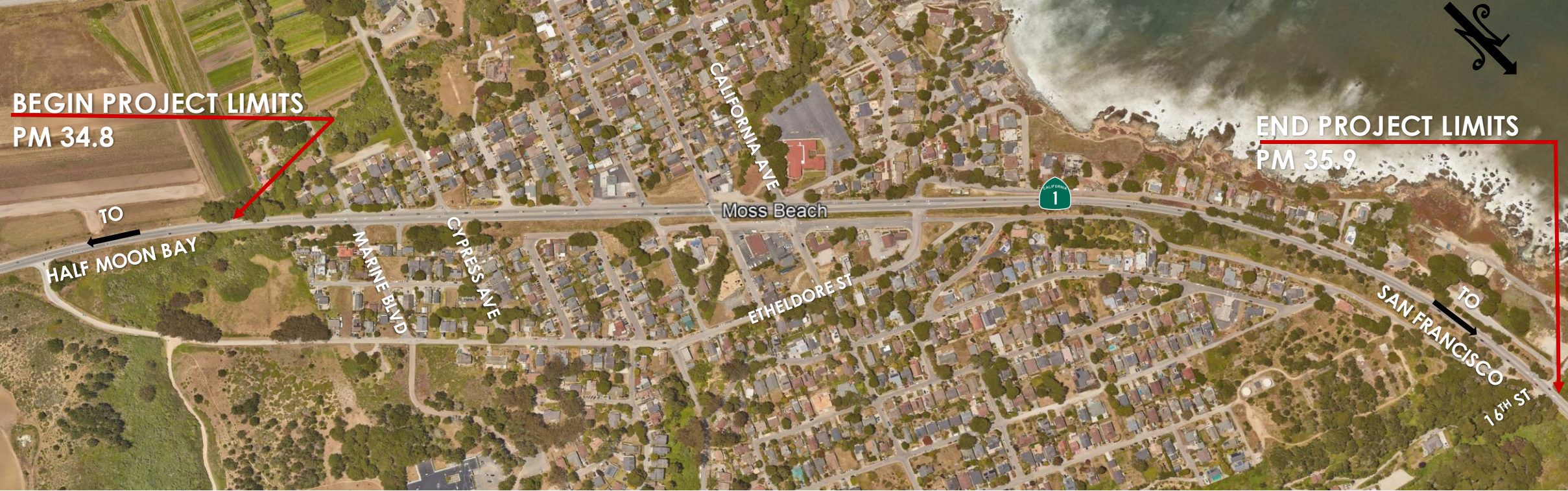
STATE ROUTE 1 CONGESTION & SAFETY
IMPROVEMENTS PROJECT

SAN MATEO COUNTY
BICYCLE AND PEDESTRIAN ADVISORY COMMITTEE,
DECEMBER 18, 2025



To learn more about this project, please visit: www.smcgov.org/planning/Moss-Beach-SR-1
This project is made possible by local transportation sales tax dollars provided by the San Mateo County Transportation Authority.

Project Vicinity Map



Goals

- Improve operations and safety for all users at key intersections
- Improve pedestrian and bicycle facilities
- Encourage environmentally friendly transportation options that reduce car trips, such as walking, biking, and public transit
- Improve vehicular traffic and multimodal connections to coastal resources for both residents and visitors



Destinations

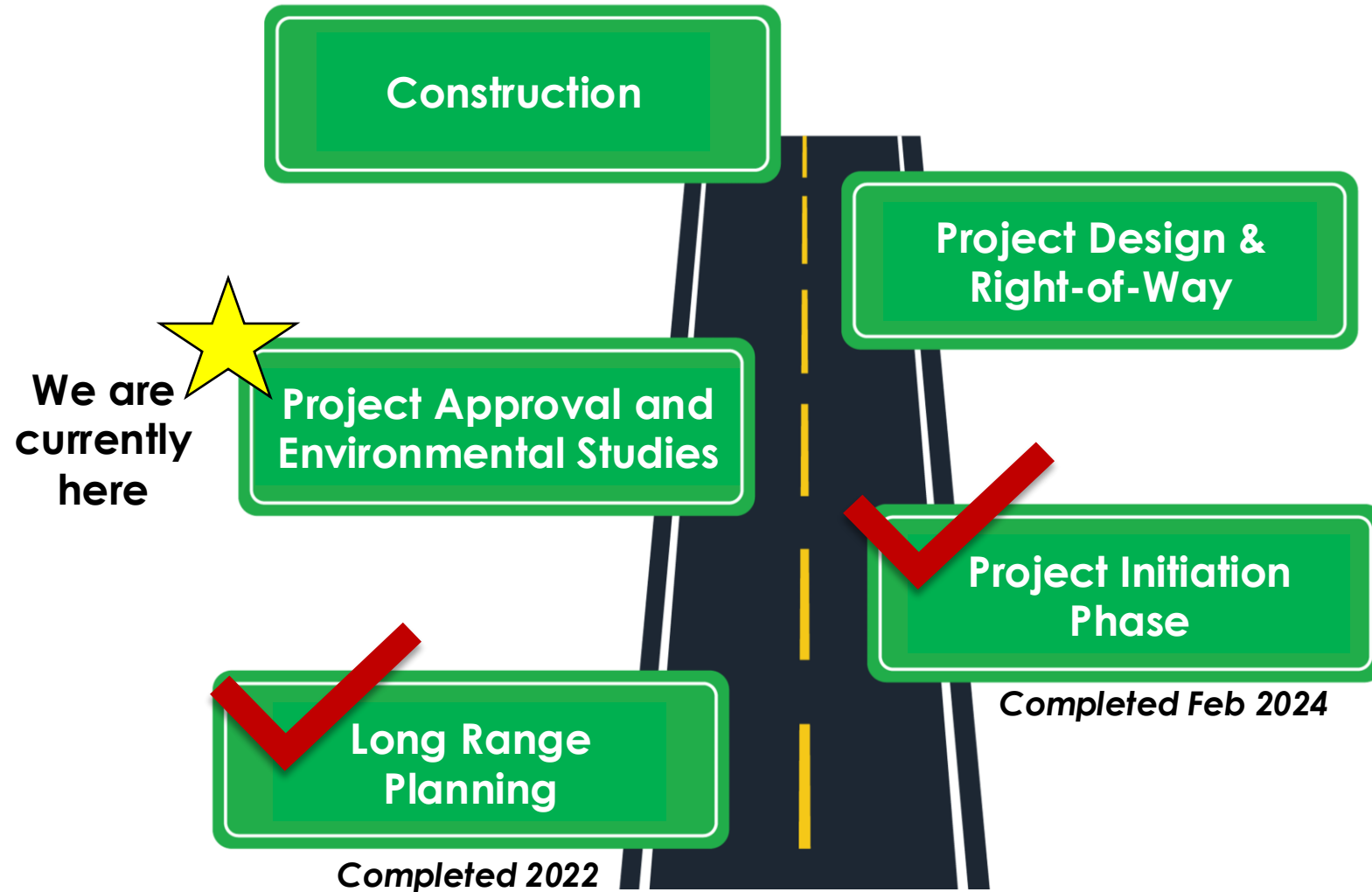


- Housing- Cypress Point, Big Wave
- Post Office – no local mail delivery
- Seton Medical Center
- Coastal resources – Fitzgerald Marine Reserve, Coastal trail, Point Montara Lighthouse/Hostel
- Neighborhood commercial on SR 1

Existing Conditions



Project Development Process Phases



Project Alternatives Summary

- **No project**
 - Do nothing
- **Project Build Alternative 1**
 - Signal at 16th St, Roundabouts at California Ave and Cypress Ave
- **Project Build Alternative 2**
 - Signals at 16th St, California Ave, and Cypress Ave
- **Build Alternative 1 has options** for raised center median or center turn lane
- **Both** alternatives include **pedestrian, bicycle, and transit** improvements

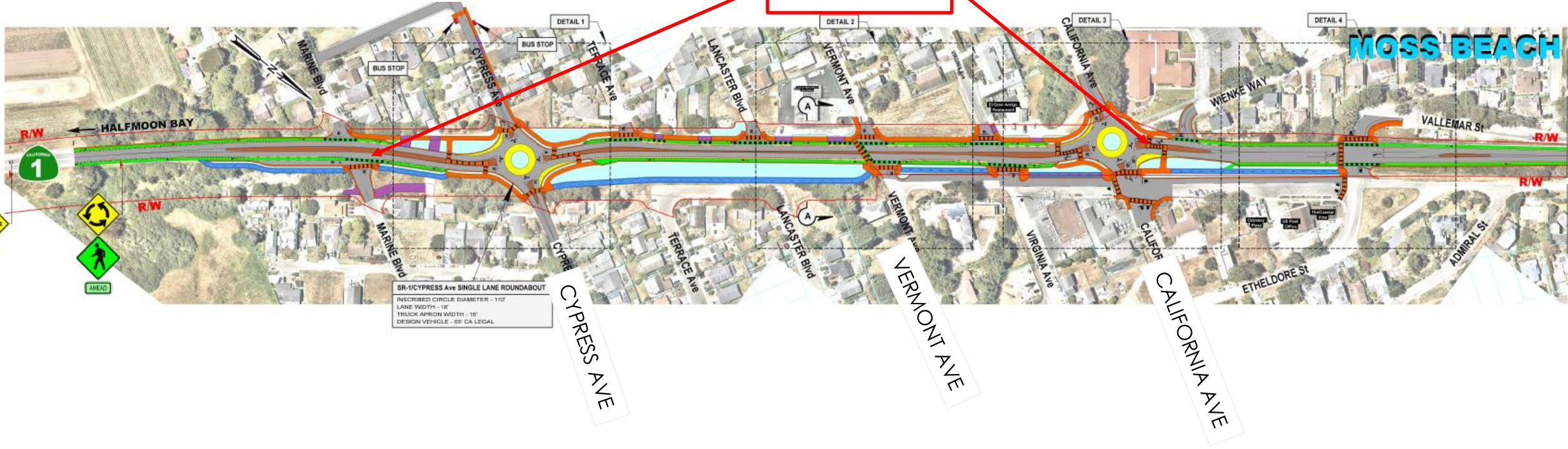
Draft Exhibits from Project Initiation Phase

Notes

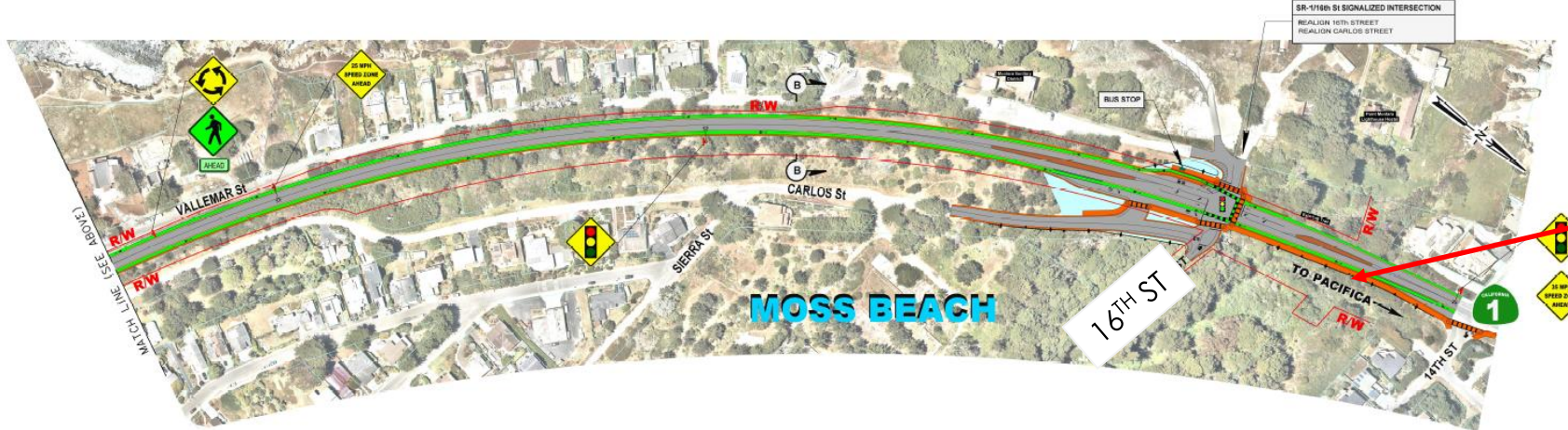
- Illustrative only – big picture
- Active refinement ongoing as part of current environmental document
- After environmental is design phase --> more changes

Pedestrian & Bicycle Features – All Alternatives

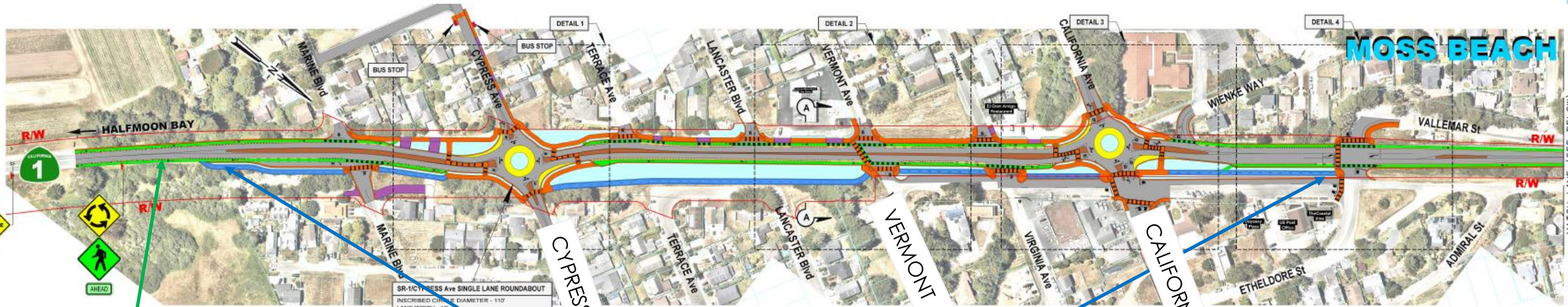
Sidewalk



Sidewalk

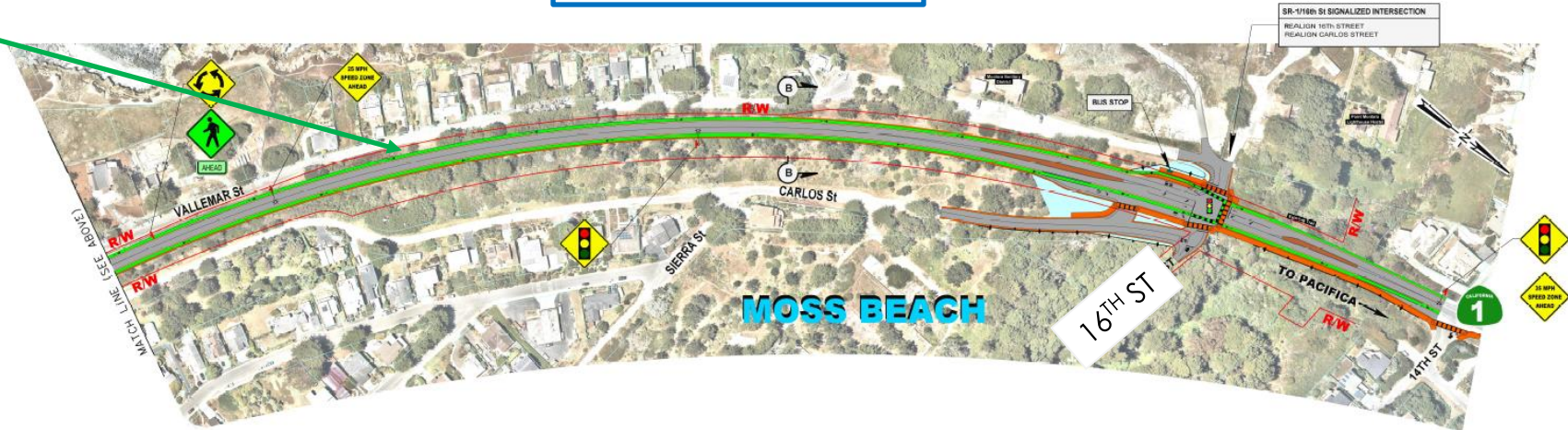


Pedestrian & Bicycle Features – All Alternatives

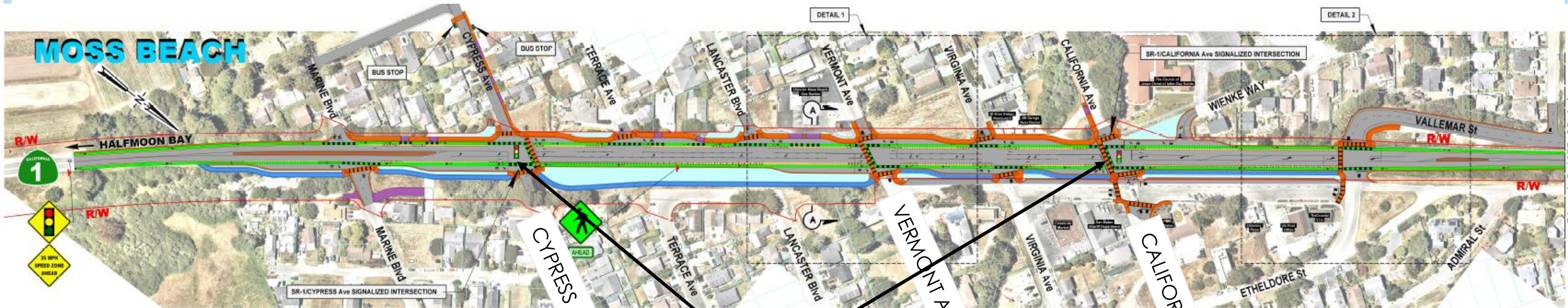


Bike Lane

Multimodal Trail



Project Alternative 2



Complete Streets Benefits

- Continuous buffered bicycle lanes, connecting to new 14.6 lane miles of bikeways with Caltrans SHOPP project
- Class 1 Multimodal Parallel Trail, consistent with County adopted plans for separated facility on eastside of SR 1
- Pedestrian facilities to reach neighborhood commercial
- New bus stops, bus pull out lane + new bike/ped connections to get to stops
- Intersection controls calm speeds and make crossings easier

Stakeholder Engagement & Feedback

Approach during Project Initiation Phase

- Midcoast Community Council
 - 9/2021, 11/2022, 8/2023, 10/2023
- Open House
 - 9/2023 and post-meeting exhibition
- Individual Meetings – Samtrans, Utilities
- Website
 - Updates & materials posting
 - Response to messages
 - Comment collection
- Social media, e-mail list, postcard mailers, flyers



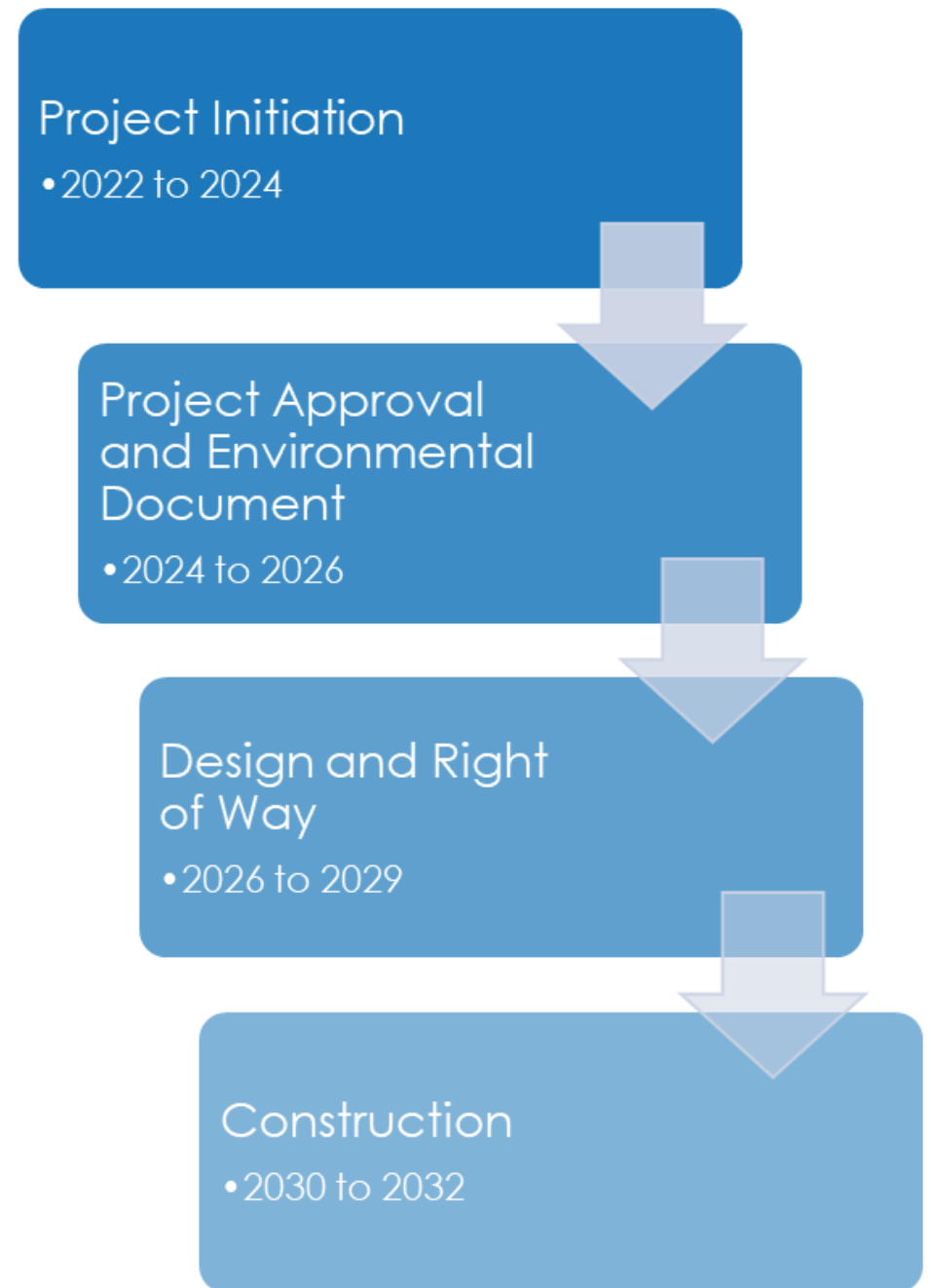


Project Study Report-Project Development Support, Appendix S

- Memorializes feedback from project initiation phase, and includes comments received on the project from 8/31/23 through 10/17/23
 - Available on Project Website - [04-0Y780-Moss Beach State Route 1 Final 022724_ReducedFile.pdf](#)
- **Overall desire for Project** - comments focused on project details
- **Safety** - lower speeds, fast track implementation, and provide better bike/ped/bus stop facilities
- **Operations** - keep SR-1 moving while allowing cross traffic movements, 16th Street / SR-1
- **Impacts** - noise, light, species, watershed, construction, utilities
- **Preferences among alternatives**

Next Steps

- **Early 2026** – Website updates + MCC meeting to clarify environmental process and show updated alternative exhibits
- **Spring 2026** – Release draft environmental document
- **Spring 2026** - Public meeting on draft environmental document
- **Summer 2026** – Draft project report and environmental document to Caltrans



Thank you!



For questions or comments about this project, please contact:

Chanda Singh
Senior Transportation Planner
County of San Mateo
csingh@smcgov.org

Lilliana Price
Project Manager
San Mateo County Transportation Authority
pricee@samtrans.com

To learn more about this project, please visit: www.smcgov.org/planning/Moss-Beach-SR-1