

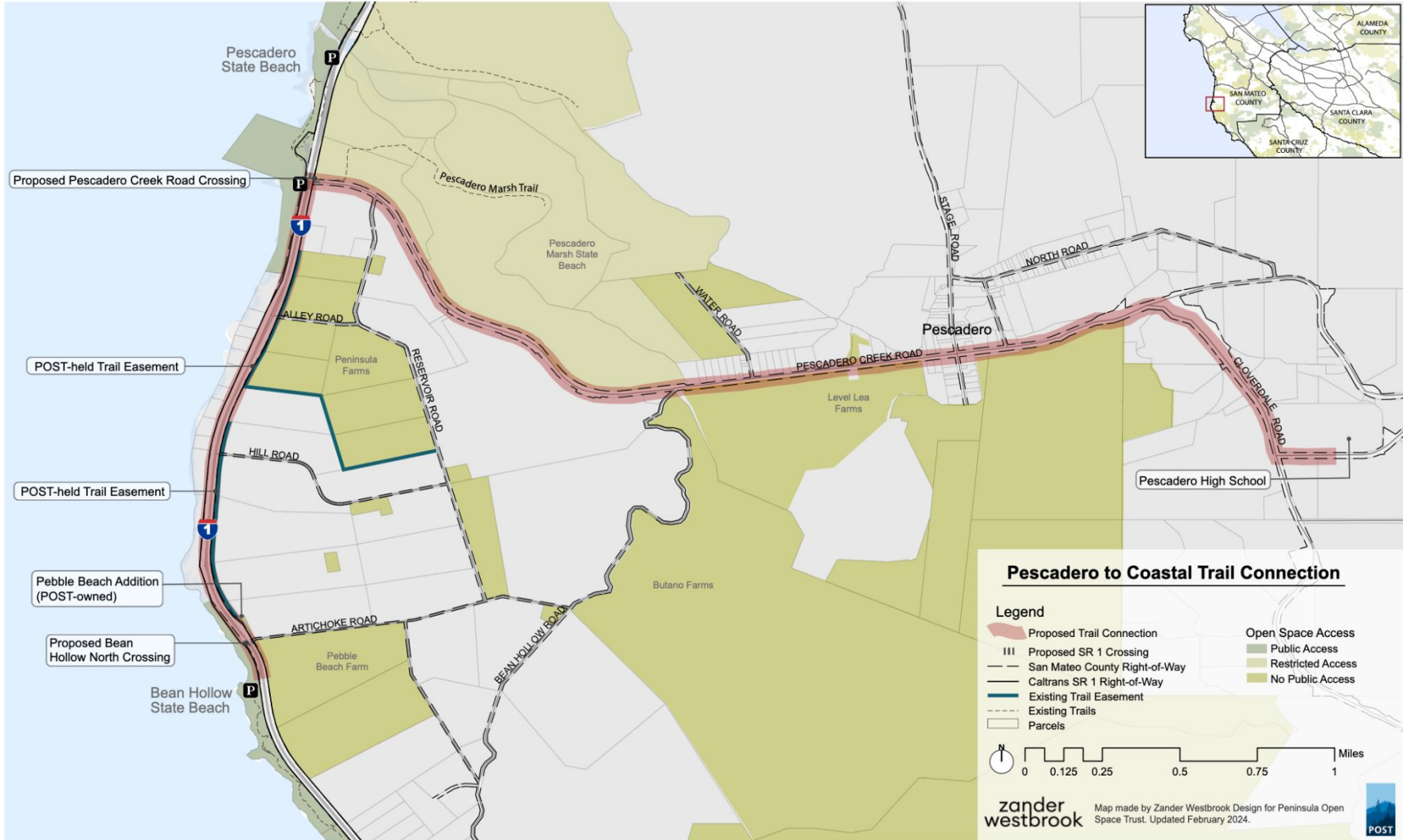


# Pescadero to Sea Connected Infrastructure Connected Community

---

**SMC BPAC Meeting**

October 16, 2025



Proposed Pescadero Creek Road Crossing

POST-held Trail Easement

POST-held Trail Easement

Pebble Beach Addition (POST-owned)

Proposed Bean Hollow North Crossing

Pescadero State Beach

Pescadero Marsh Trail

Pescadero Marsh State Beach

ALLEY ROAD

Peninsula Farms

RESERVE ROAD

HILL ROAD

WATER ROAD

PESCADERO CREEK ROAD

Level Lea Farms

Pescadero

STAGE ROAD

NORTH ROAD

CLOVERDALE ROAD

Pescadero High School

Bean Hollow State Beach

ARTICHOKE ROAD

Pebble Beach Farm

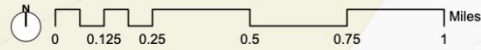
BEAN HOLLOW ROAD

Butano Farms

### Pescadero to Coastal Trail Connection

#### Legend

- Proposed Trail Connection
- Proposed SR 1 Crossing
- San Mateo County Right-of-Way
- Caltrans SR 1 Right-of-Way
- Existing Trail Easement
- Existing Trails
- Parcels
- Open Space Access
- Public Access
- Restricted Access
- No Public Access



**zander westbrook**

Map made by Zander Westbrook Design for Peninsula Open Space Trust. Updated February 2024.



# Project Objectives

- Explore the possibility of developing a trail that connects the community of Pescadero to local coastal assets
- Define a project scope, partner contributions, strategy to advance, funding strategy, and feasibility analysis.





- Convene agency stakeholders
- Align plans with Coastal Trail initiatives
- Support with regulatory, technical, and funding expertise

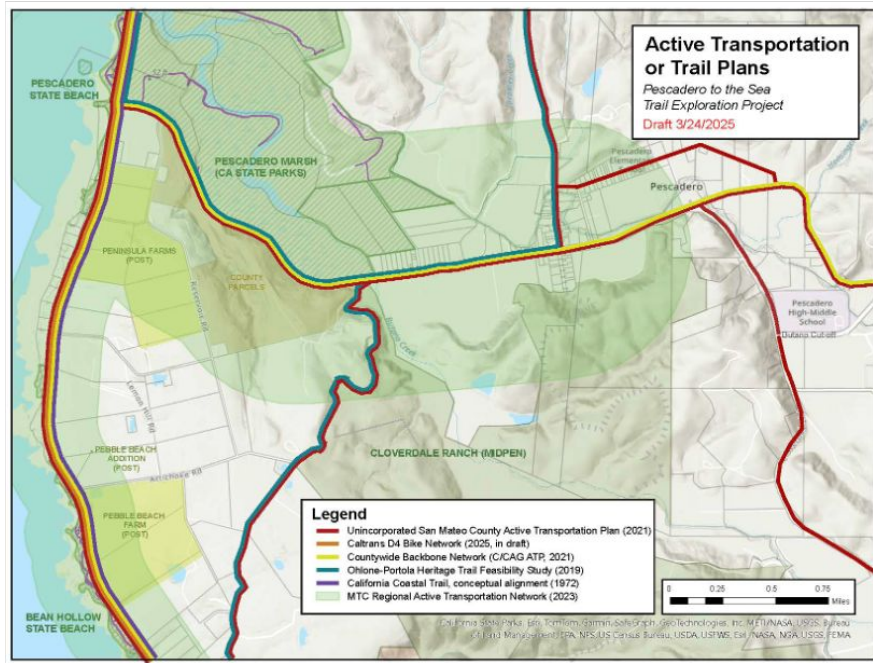


- Convene community
- Bridge local knowledge base
- Drive participatory decision-making
- Shepherd the outcomes

### **Technical Assistance Grant**

National Park Service Rivers, Trails, & Conservation Assistance (NPS-RTCA)

# Desired Planning Project Outcome: Shared Action Plan for Trail Development



Assessment of Potential Trail Route Segments

Community-Vetted Trail Concept

Strategic Funding Plan

Initial Designs

Continued Community Stewardship

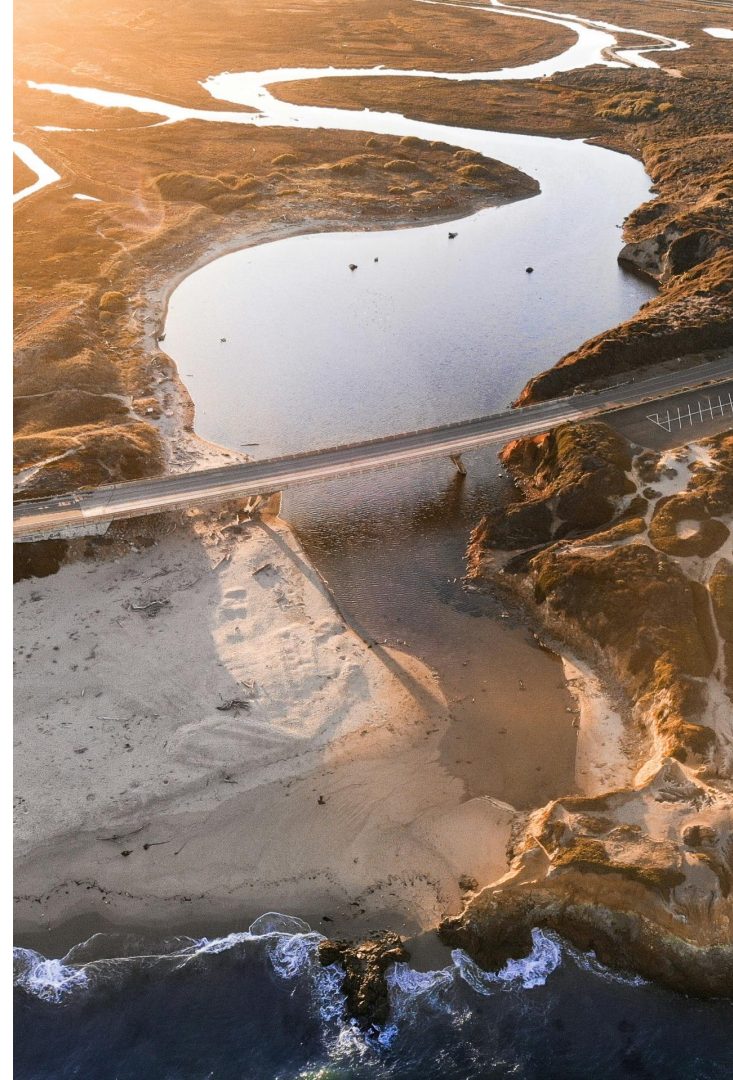
## How might we make a connective trail project even more valuable to all stakeholders?

- Increase recreational and commuter routes
- Connect to pocket park and community spaces
- Organize parking along trail
- Improve access to businesses in town
- Add interpretive signage about ecological and cultural histories
- Leverage work for multiple improvements (lighting, stormwater management, etc)
- Increase public safety
- Provide habitat restoration and flood resilience



## Recap & Overview

- Conceptual meetings with individual stakeholders, Nov. - Dec. 2023
  - Both agencies and local champions
  - Broad agreement that this is a project worth pursuing
  - General desire for a safe, separated, multi-modal path
  - Assessment that there is a lack of an obvious lead partner to lead a project



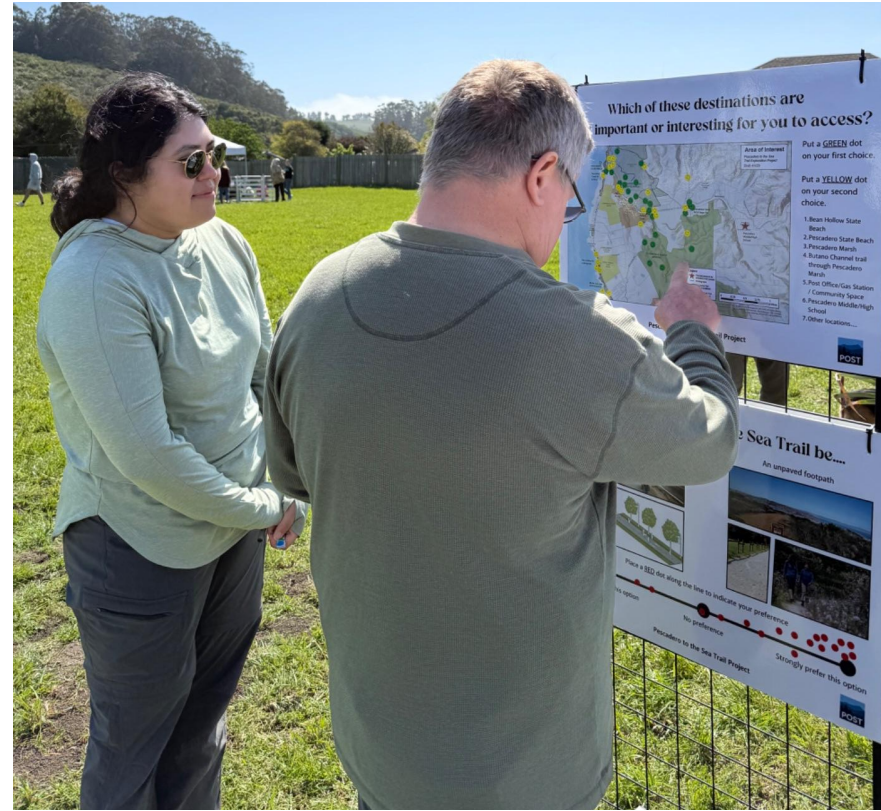
# Recap & Overview

- National Park Service Rivers, Trails, and Conservation Assistance (NPS RTCA) Program
  - Technical assistance (not a grant)
  - Helping with:
    - Defining project, scope, partner contributions, strategy to advance, funding strategy, feasibility analysis etc.
  - Selected late spring 2024
  - Project initiation October 2024
  - Project Renewed October 2025



# Project Team Recap

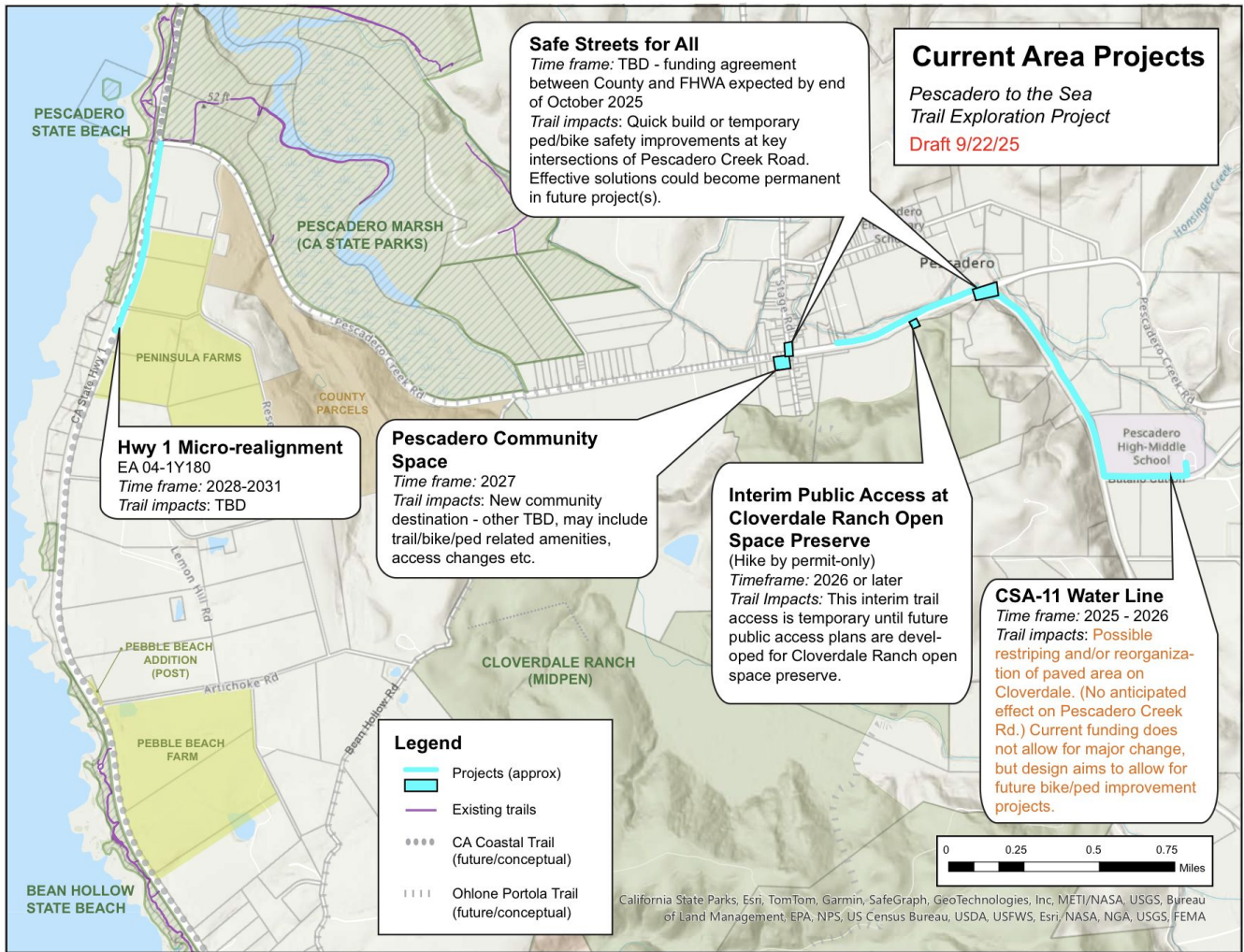
- Top 2 Project outcomes:
  - Community-Vetted trail concept or vision summary
  - Feasibility assessment on potential trail route segments
- Still seeking leadership for funding applications; capacity limitations have been a barrier
- Arriba ready to implement; currently operating ad-hoc community stewards



## Recap & Overview

- Fall 2024- Fall 2025
- Aligned maps from multiple existing state, county, and community plans
- Outreach to stakeholders at community events and PMAC
- Pre-application for initial funding accepted by California Coastal Conservancy
- October 2025 Walk/Bike Audit
- Community Survey (online) open now





**Safe Streets for All**

*Time frame:* TBD - funding agreement between County and FHWA expected by end of October 2025

*Trail impacts:* Quick build or temporary ped/bike safety improvements at key intersections of Pescadero Creek Road. Effective solutions could become permanent in future project(s).

**Current Area Projects**

*Pescadero to the Sea Trail Exploration Project*

**Draft 9/22/25**

**Hwy 1 Micro-realignment**

EA 04-1Y180  
*Time frame:* 2028-2031  
*Trail impacts:* TBD

**Pescadero Community Space**

*Time frame:* 2027  
*Trail impacts:* New community destination - other TBD, may include trail/bike/ped related amenities, access changes etc.

**Interim Public Access at Cloverdale Ranch Open Space Preserve**

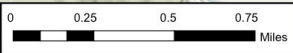
(Hike by permit-only)  
*Timeframe:* 2026 or later  
*Trail Impacts:* This interim trail access is temporary until future public access plans are developed for Cloverdale Ranch open space preserve.

**CSA-11 Water Line**

*Time frame:* 2025 - 2026  
*Trail impacts:* Possible restriping and/or reorganization of paved area on Cloverdale. (No anticipated effect on Pescadero Creek Rd.) Current funding does not allow for major change, but design aims to allow for future bike/ped improvement projects.

**Legend**

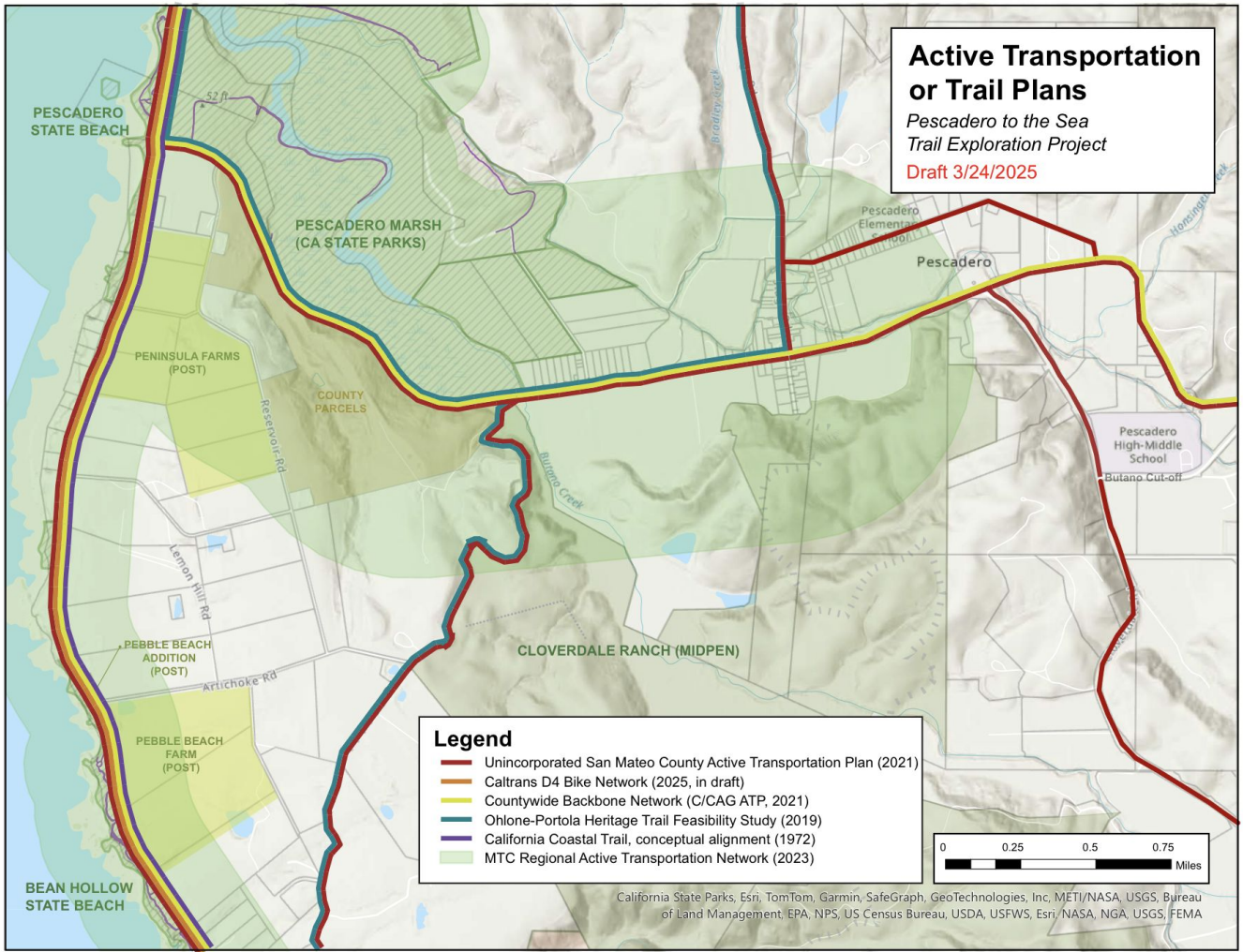
- Projects (approx)
- Existing trails
- CA Coastal Trail (future/conceptual)
- |||| Ohlone Portola Trail (future/conceptual)



# Active Transportation or Trail Plans

Pescadero to the Sea  
Trail Exploration Project

Draft 3/24/2025



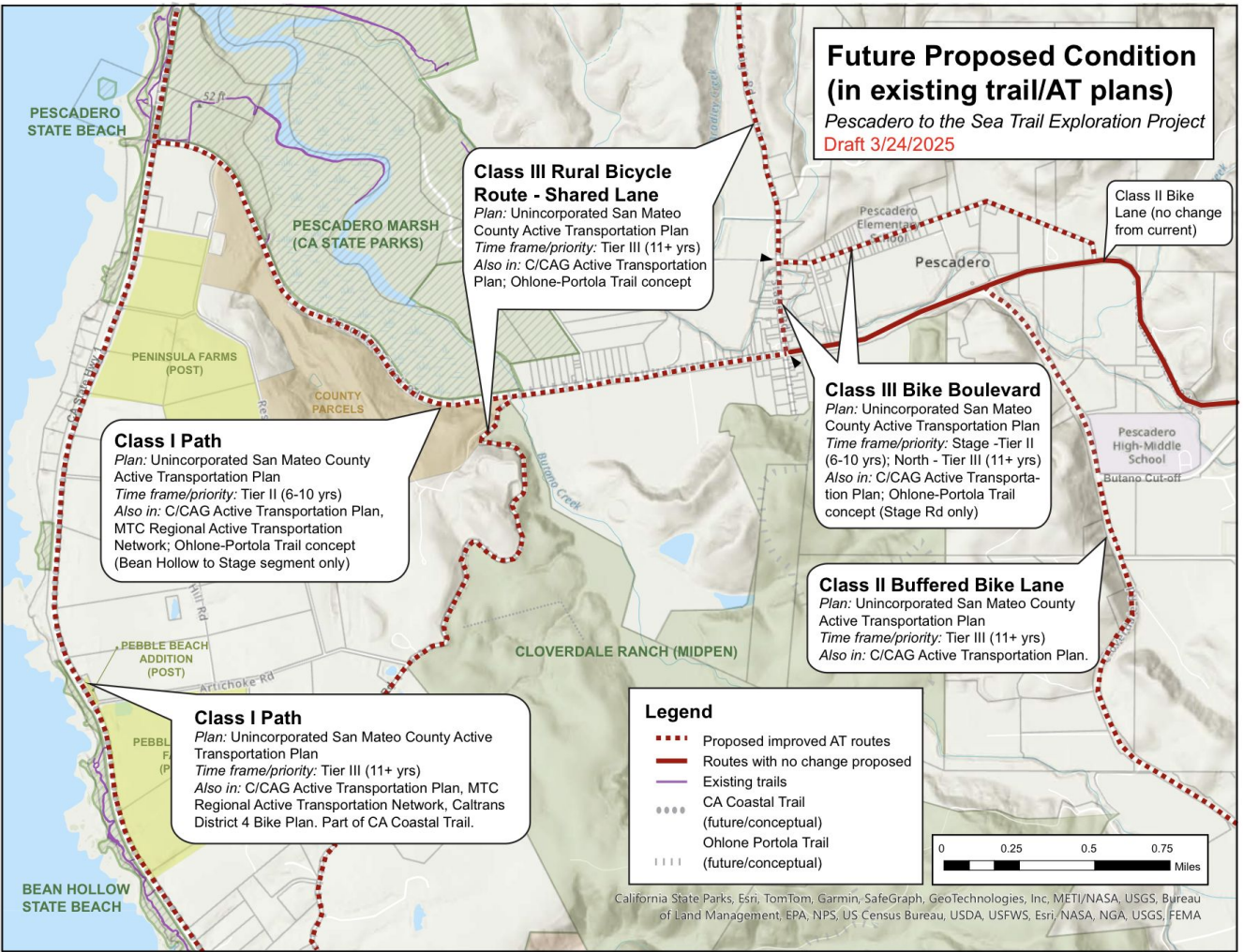
**Legend**

- Unincorporated San Mateo County Active Transportation Plan (2021)
- Caltrans D4 Bike Network (2025, in draft)
- Countywide Backbone Network (C/CAG ATP, 2021)
- Ohlone-Portola Heritage Trail Feasibility Study (2019)
- California Coastal Trail, conceptual alignment (1972)
- MTC Regional Active Transportation Network (2023)

California State Parks, Esri, TomTom, Garmin, SafeGraph, GeoTechnologies, Inc, METI/NASA, USGS, Bureau of Land Management, EPA, NPS, US Census Bureau, USDA, USFWS, Esri, NASA, NGA, USGS, FEMA

# Future Proposed Condition (in existing trail/AT plans)

Pescadero to the Sea Trail Exploration Project  
Draft 3/24/2025



**Class III Rural Bicycle Route - Shared Lane**  
 Plan: Unincorporated San Mateo County Active Transportation Plan  
 Time frame/priority: Tier III (11+ yrs)  
 Also in: C/CAG Active Transportation Plan; Ohlone-Portola Trail concept

Class II Bike Lane (no change from current)

**Class III Bike Boulevard**  
 Plan: Unincorporated San Mateo County Active Transportation Plan  
 Time frame/priority: Stage -Tier II (6-10 yrs); North - Tier III (11+ yrs)  
 Also in: C/CAG Active Transportation Plan; Ohlone-Portola Trail concept (Stage Rd only)

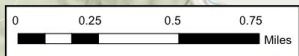
**Class I Path**  
 Plan: Unincorporated San Mateo County Active Transportation Plan  
 Time frame/priority: Tier II (6-10 yrs)  
 Also in: C/CAG Active Transportation Plan, MTC Regional Active Transportation Network; Ohlone-Portola Trail concept (Bean Hollow to Stage segment only)

**Class II Buffered Bike Lane**  
 Plan: Unincorporated San Mateo County Active Transportation Plan  
 Time frame/priority: Tier III (11+ yrs)  
 Also in: C/CAG Active Transportation Plan.

**Class I Path**  
 Plan: Unincorporated San Mateo County Active Transportation Plan  
 Time frame/priority: Tier III (11+ yrs)  
 Also in: C/CAG Active Transportation Plan, MTC Regional Active Transportation Network, Caltrans District 4 Bike Plan. Part of CA Coastal Trail.

**Legend**

- Proposed improved AT routes
- Routes with no change proposed
- Existing trails
- CA Coastal Trail (future/conceptual)
- .... Ohlone Portola Trail (future/conceptual)



California State Parks, Esri, TomTom, Garmin, SafeGraph, GeoTechnologies, Inc, METI/NASA, USGS, Bureau of Land Management, EPA, NPS, US Census Bureau, USDA, USFWS, Esri, NASA, NGA, USGS, FEMA

# CLOVERDALE BLUFFS TRAIL DESIGN COMMUNITY WORKSHOP

Saturday, October 25  
1:00-4:00pm



arriba  
SOUTH COAST

## Explore and envision a new public space

Hear about POST's work to preserve agriculture and recreation along this special segment of the south coast. Learn design principles from Santa Cruz Mountain Trail Stewards. Share your ideas for features, vistas, and accessibility.



Sign up here  
to learn more

# Upcoming Trail Planning Workshop: Join Us!

## TALLER COMUNITARIO PARA DISEÑAR SENDEROS EN CLOVERDALE BLUFFS

Sábado, 25 de octubre  
1:00-4:00p



arriba  
SOUTH COAST

## Descubrir y ver un nuevo lugar público

Descubra el trabajo de POST para proteger la agricultura y el ocio en este segmento especial de la costa sur. Conozca los principios de diseño de los gestores de senderos de montaña de Santa Cruz. Comparta sus pensamientos sobre características, vistas y accesibilidad.



Regístrate aquí para  
aprender más



**THANK YOU**

---