



COUNTY OF SAN MATEO DEPARTMENT OF EMERGENCY MANAGEMENT



Emergency Services Council Meeting

IN-PERSON WITH REMOTE PUBLIC PARTICIPATION AVAILABLE

April 16, 2025 5:30 PM – 7:00 PM

**Regional Operations Center
501 Winslow Street, Redwood City CA 94063**

Join Zoom Meeting

<https://smcgov.zoom.us/j/81975236876?pwd=FeJdSKX5a0zLmYMGZKU7Wlk4TNs9.1>

Meeting ID: 819 7523 6876

Passcode: 6503634790

Dial by your location

+1 669 900 6833 US (San Jose)

AGENDA

- | | |
|--|-----------------|
| 1. Roll Call (2 minutes) | Chair |
| 2. Public Comments, Correspondence (Clerk), Announcements (3 minutes) | Clerk |
| 3. Action to Set Agenda and Approve Consent Agenda Items (5 minutes) | Chair |
| 4. San Mateo Consolidated Fire Dept. Hazmat Program Presentation (15 minutes) | Guest |
| 5. Emergency Services Council Proposed Budget FY2025-26 – Vote Required (40 minutes) | Director |
| 6. Ladris Evacuation Modeling Presentation (15 minutes) | Guest |
| 7. Director’s Update (5 minutes) | Director |
| 8. Report Outs Related to Emergency Services Council (5 minutes) | Chair & Members |

Consent Items

All items on the consent agenda are approved by one action unless a request is made at the beginning of the meeting that an item be withdrawn or transferred to the regular agenda. Any item on the regular agenda may be transferred to the consent agenda.

- Approval of February 20, 2025 meeting minutes

- | | |
|----------------|-------|
| 9. Adjournment | Chair |
|----------------|-------|

Meetings are accessible to people with disabilities. Individuals who need special assistance or a disability-related modification or accommodation (including auxiliary aids or services) to participate in this meeting, or who have a disability and wish to request an alternative format for the agenda, meeting notice, agenda packet or other writings that may be distributed at the meeting, should contact the Agenda Administrator of the Emergency Services Council at least 2 working days before the meeting at (650) 363-4790 and/or DEM_DutyOfficer@smcgov.org. Notification in advance of the meeting will enable the County to make reasonable arrangements to ensure accessibility to this meeting and the materials related to it. Attendees to this meeting are reminded that other attendees may be sensitive to various chemical based products.

THIS PAGE INTENTIONALLY LEFT BLANK



COUNTY OF SAN MATEO DEPARTMENT OF EMERGENCY MANAGEMENT



Emergency Services Council Committee Meeting

February 20th, 2025

This meeting was called to order at 17:29 by Council Vice Chair Medina.

I. Roll Call

Atherton	Council Member Hawkins-Manuelian	Present
Belmont	Council Member McCune	Present
Brisbane	Council Member Lentz	Not Present
Burlingame	Council Member Pappajohn (Alternate)	Present
Colma	Council Member Slaughter	Present
Daly City	Council Member Sylvester	Present
East Palo Alto	Council Member Barragan	Present
Foster City	Council Member Niederhofer	Present
Half Moon Bay	Council Member Jonsson	Present
Hillsborough	Council Member Cole (Alternate)	Present
Menlo Park	Council Member Combs	Not Present
Millbrae	Council Member Rainaldi	Present
Pacifica	Council Member Boles	Present
Portola Valley	Council Member Flynn (Alternate)	Present
Redwood City	Council Member Eakin	Present
San Bruno	Council Vice Chair Medina	Present
San Carlos	Council Member Dugan	Present
San Mateo	Council Member Newsom	Present
South San Francisco	Council Member Flores	Present
Woodside	Council Member Goeld	Present
County of San Mateo	Council Chair Gauthier	Not Present

Attending Agency Representatives:

- Deputy County Executive Ely, County Executive's Office
- Director Dhapodkar, San Mateo County Emergency Management
- Assistant Director Reynolds, San Mateo County Emergency Management
- Clerk of the Committee Jen, San Mateo County Emergency Management
- Secretary of the Committee Mak, San Mateo County Emergency Management

- II. Approval of the Agenda
 - Approved without objection
- III. Approval of the minutes
 - Approved without objection
- IV. Public Comments, Correspondence, Announcements
 - None
- V. New Finance Committee Designee – Vote required
 - The Emergency Services Council currently has a vacancy, with no coastal representative.
 - Council Chair Gauthier has nominated Council Member Christine Boles, City of Pacifica, to fill the vacancy.
 - Motion by Daly City. Second by Burlingame.
 - Vote – all in.
- VI. Joint Power Agreement Update
 - Director Dhapodkar has met with Police and Fire Chiefs to incorporate their feedback.
 - Director Dhapodkar presented the cities and towns that have approved and adopted the Emergency Services Council – Joint Exercise of Powers Memorandum of Understanding (ESC-JPA MOU).
 - Remaining cities and towns must approve the ESC-JPA MOU before submission to the San Mateo County Board of Supervisors.
 - Once approved by the Board of Supervisors, San Mateo County (SMC) Emergency Management will send a DocuSign email to each city or town’s city manager for signature.
- VII. Set Dates for Future ESC Meetings – Vote required
 - SMC Emergency Management recommends that all Member Agencies approve the new 2025 ESC meeting calendar to address scheduling conflicts.
 - Motioned by Daly City. Second by San Carlos.
 - Vote – all in.
- VIII. Nature’s Powerhouse: Tsunamis, Tornadoes, Earthquakes, Wildfires
 - Assistant Director Reynolds provides an overview of recent events that serve as reminders for preparedness.
 - SMC Emergency’s current efforts include finalizing the All Hazard Evacuation Plan (AHEP), planning a wildfire tabletop exercise, developing an exercise template, assessing community needs, and strengthening Alert & Warning coordination.
 - Future initiatives include updating the County emergency plan, enhancing the County website, pursuing grants, and developing a comprehensive evacuation plan.

- IX. Strategic Plan Update
 - SMC Emergency Management 2025 – 2030 Strategic Plan, guided by extensive stakeholder engagement, incorporates the TARGET Gap Analysis and “3C Framework” (Connection, Capability, Communication) to share our 2030 vision.
 - Launching in March 2025, the Emergency Management Partnership (EMPI) will enhance coordination across 20 jurisdictions, strengthening trust, communication, and response capabilities.
 - Key performance indicators (KPIs) are being developed to measure progress toward making San Mateo County the nation’s most resilient county by 2030.

- X. Director’s Report
 - All Hazards Evacuation Plan (AHEP): Development is underway, with completion expected by June 2025. Stakeholder engagement is ongoing, and a tabletop exercise on March 10th, 2025, will provide training on Ladriz AI evacuation modeling software.
 - Coastside Resilience Infrastructure Strategic Plan (CRISP): Nearing completion with 22 critical infrastructure projects prioritized from 106 submissions. A stakeholder follow-up meeting will be held on March 6th, 2025, to present findings and the GIS dashboard.
 - Community Engagement: Ongoing preparedness efforts include events such as Pizza & Prep, Coastside Community Emergency Response Team (CERT) Leadership Forum, Virtual Wildfire Preparation Webinar, and local preparedness briefings.

- XI. Members Report
 - Council Vice Chair Medina and other Council Members thanked the Members, who will be terming out before the next ESC meeting, for their service to the Council and their communities.

- XII. Adjournment
 - The meeting was adjourned at 16:28.

- XIII. Announcement of the next meeting: April 16th, 2025.

THIS PAGE INTENTIONALLY LEFT BLANK



COUNTY OF SAN MATEO
EMERGENCY
MANAGEMENT

Dr. Shruti Dhapodkar
Director

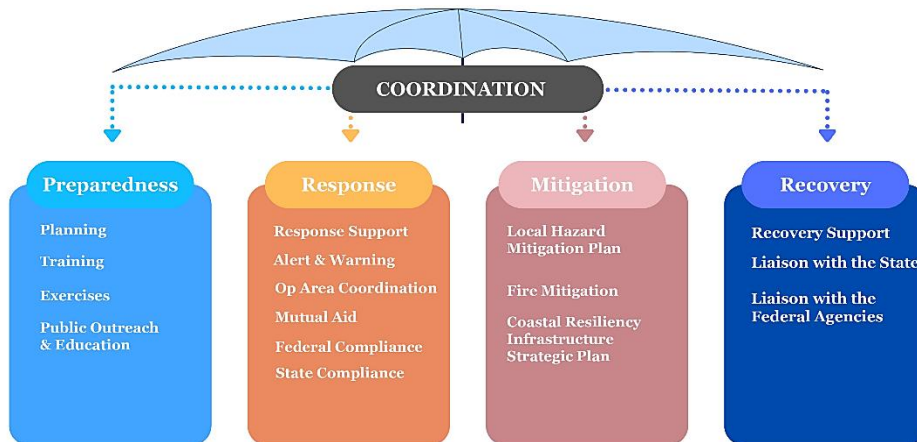
County Government Center
501 Winslow Street
Redwood City, CA 94063
(650) 363-4790
www.smcgov.org/dem

Date: April 16, 2025
To: Emergency Services Council (ESC) Finance Committee
Cc: Adam Ely, Deputy County Executive
From: Dr. Shruti Dhapodkar, Director
Subject: FY2025-26 Emergency Services Council Joint Powers Authority Proposed Budget (Vote Required)

Background

The Emergency Services Council-Joint Powers Authority (ESC-JPA) was established through an agreement between the County of San Mateo and its 20 cities and towns to provide strategic oversight budgetary and approval for the Emergency Services Council (ESC).

The ESC-JPA is a collaborative platform for coordinating emergency services and response among its members to enhance emergency preparedness and response capabilities within the San Mateo Operational Area (SMC OA). The County of San Mateo Emergency Management (SMC EM) oversees programs and funding through developing and maintaining comprehensive emergency plans, operating as a central hub for coordination during emergencies, allocating and deploying resources for emergency response, conducting outreach to raise public awareness about preparedness, managing alert and notification systems, organizing training sessions to ensure effective response, and collaborating with stakeholders to strengthen preparedness and resiliency.



On May 15, 2024, the ESC-JPA unanimously approved the FY2024-25 budget of \$3.8 million, funded by contributions from the County, Member Agencies, San Francisco International Airport (SFO), grants, and the Trust Fund. The approved budget allocated funding for Environmental Health (EH) and Hazmat services, ESC-JPA programs, ESC-recommended and approved projects, SMC EM personnel, facility charges, , alert and warning systems, emergency preparedness and response training, and community preparedness.

Budget Discussion

ESC-JPA Budget Overview

The State, County, and Member Agencies are all under financial strain caused by significant federal cuts, economic headwinds, and rising operational costs across all levels of government. SMC EM has identified cost-saving measures and developed the following FY2025-26 proposed budget that maintains essential services while addressing fiscal constraints.

The recommended ESC-JPA budget for FY2025-26 totals \$4.7 million, with funding from the County, Member Agencies, SFO, grants, Trust Fund, and reserves. The proposal includes a one-time, strategic use of monies from Trust Fund and Reserves to provide short-term relief.

Looking ahead, SMC EM recommends that the ESC begin long-term fiscal planning to replace EH and Hazmat vehicles in five to six years. Estimated replacement costs range from \$1.8 million to \$2.2 million, potentially increasing depending on economic conditions. Current projections indicate that the combined Vehicle Replacement Fund and the anticipated Trust Fund balance at the end of FY2024-25 may be used to support these future needs. However, even with annual Sinking Fund contributions of \$0.15 million, a funding gap total of at least \$0.43 million is currently projected. This points to the importance of proactive fiscal planning and aggressive pursuit of available grants to ensure the financial health of the ESC-JPA.

Trust Fund Status

The ESC-JPA maintains a Trust Fund. The minimum for the Trust Fund is set by the ESC-JPA at \$500,000, and the maximum cap is \$1,500,000. Below is the accounting of the Trust Fund based on ESC-JPA's approved expenses. The estimated FY2024-25 year-end Trust Fund balance is \$801,945.

FY2025-26 Proposed ESC-JPA Budget and Expenses

The Fiscal Year 2025-2026 ESC-JPA Budget totals approximately \$4.7 million, with funding distributed across several key sources:

Funding Source	Percentage
County of San Mateo	35%
Member Cities and Towns	35%
Grants	15%
San Francisco International (SFO)	9%
Trust Fund & Reserves	6%
TOTAL	100%

This budget reflects a one-time infusion of monies from the Trust Fund and reserves to provide short-term relief to Member Agencies while maintaining essential services and operational stability.

ESC-JPA expenses also total \$4.7 million, covering various aspects, including service charges, salary and benefits, and programs and contracts.

ESC-JPA Programs

\$1.1 million of the budget for FY2025-26 will be strategically allocated to various ESC programs. The breakdown of expenses is as follows:

ESC Programs	Total FY25-26	Grants	Cities	County
Local Hazard Mitigation Plan (LHMP)	\$600,000	\$475,000	\$62,500	\$62,500
Strategic Communications/Community Outreach	\$199,625	\$99,813	\$49,906	\$49,906
Emergency Management Plans & Programs	\$250,000	\$125,000	\$62,500	\$62,500
Emergency Management Training & Exercise	\$56,660	\$28,330	\$14,165	\$14,165
TOTAL	\$1,106,285	\$728,143	\$189,071	\$189,071

Recommendation

SMC Emergency Management recommends that the ESC adopt the proposed budget with the withdrawal of \$300k total from the Trust Fund and reserves.

Attachment: Proposed FY2025-26 Emergency Services Council JPA Budget

FY 2025-26 Emergency Services JPA Budget

Description	FY 2024-25					FY 2025-26				
	Adopted Budget	Cities	County	SFO Revenue	Trust Fund/Reserves	Grants	Recommended Budget	Change Amount Between FY 2024-25 & FY 2025-26	Percent of Total	
Grants	272,379					728,143	728,143	455,764	15.3%	
Trust Fund/Reserves Withdrawal	575,000				300,000		300,000	(275,000)	6.3%	
San Mateo DEM (County Share)	827,808		1,600,034				1,600,034	772,226	33.7%	
Environmental Health (County Share)	442,647		30,488				30,488	(412,159)	0.6%	
San Francisco International Airport	410,000			410,000			410,000	0	8.6%	
Atherton	43,402	55,764					55,764	12,361	1.2%	
Belmont	48,157	62,785					62,785	14,628	1.3%	
Brisbane	15,091	19,787					19,787	4,696	0.4%	
Burlingame	66,309	87,623					87,623	21,313	1.8%	
Colma	5,893	6,573					6,573	680	0.1%	
Daly City	137,200	171,714					171,714	34,514	3.6%	
East Palo Alto	39,809	49,561					49,561	9,752	1.0%	
Foster City	65,556	83,482					83,482	17,926	1.8%	
Half Moon Bay	22,529	27,153					27,153	4,624	0.6%	
Hillsborough	42,702	53,976					53,976	11,274	1.1%	
Menlo Park	96,068	120,510					120,510	24,442	2.5%	
Millbrae	40,061	52,493					52,493	12,432	1.1%	
Pacifica	55,124	70,095					70,095	14,971	1.5%	
Portola Valley	151,756	191,192					191,192	39,437	4.0%	
Redwood City	67,263	83,958					83,958	16,695	1.8%	
San Bruno	66,928	85,841					85,841	18,913	1.8%	
San Carlos	177,767	230,795					230,795	53,028	4.9%	
San Mateo	132,722	170,677					170,677	37,955	3.6%	
South San Francisco	26,596	33,229					33,229	6,633	0.7%	
Woodside										
Total Revenue	\$3,845,788	\$1,678,022	\$1,630,522	\$410,000	\$300,000	\$728,143	\$4,746,686	\$900,898	100.0%	
DEM Personnel	687,928	379,084	379,084				758,167	70,239	55.2%	
DEM On-Call Pay and Benefit Costs	23,691	107,319	107,319				214,639	190,948	15.6%	
DEM Management/Admin Fees	290,477	138,145	138,145				276,291	(14,187)	20.1%	
Environmental Health Hazmat Personnel	123,218	61,609	61,609				123,218	0	9%	
Total Personnel	\$1,125,314	\$686,157	\$686,157	\$0	\$0	\$0	\$1,372,314	\$247,000	100.0%	
San Mateo Consolidated Hazmat Contract	817,317	425,221	425,221				850,441	33,124	37.5%	
San Mateo Consolidated Fire Battalion Chief Contract	240,414	0	0				0	(240,414)	0.0%	
Environmental Health Hazmat Services/Supplies	55,458	24,229	24,229				48,458	(7,000)	2.1%	
ESC Programs	880,420	189,071	189,071			728,143	1,106,285	225,865	48.8%	
Hazmat New Firefighter Training	40,945	21,292	21,292				42,583	1,638	1.9%	
Alert & Warning	52,500	87,556	87,556				175,111	122,611	7.7%	
DEM Services/Supplies	28,545	21,155	21,155				42,310	13,765	1.9%	
Total Services & Supplies	\$2,115,599	\$768,523	\$768,523	\$0	\$0	\$728,143	\$2,265,188	\$149,589	100.0%	
Regional Operations Center Facility Expense & Maintenance	\$472,842	247,720	247,720				495,439	22,627	44.7%	
All Other Service Charges	\$132,063	306,873	306,873				613,745	481,682	55.3%	
Total Other Services	\$604,875	\$554,592	\$554,592	\$0	\$0	\$0	\$1,109,184	\$504,309	100.0%	
Total Expenditures	\$3,845,788	\$2,009,272	\$2,009,272	\$0	\$0	\$728,143	\$4,746,686	\$900,898	23%	

FY 2025-26 Emergency Services JPA Budget

Description	FY 2024-25						FY 2025-26					
	Adopted Budget	Cities	County	SFO Revenue	Trust Fund/Reserves	Grants	Recommended Budget	Change Amount Between FY 2024-25 & FY 2025-26	Percent of Total			
Grants	272,379					728,143	728,143	455,764	15.3%			
Trust Fund/Reserves Withdrawal	575,000				300,000		300,000	(275,000)	6.3%			
San Mateo DEM (County Share)	827,808		1,600,034				1,600,034	772,226	33.7%			
Environmental Health (County Share)	442,647		30,488				30,488	(412,159)	0.6%			
San Francisco International Airport	410,000			410,000			410,000	0	8.6%			
Atherton	43,402	55,764					55,764	12,361	1.2%			
Belmont	48,157	62,785					62,785	14,628	1.3%			
Brisbane	15,091	19,787					19,787	4,696	0.4%			
Burlingame	66,309	87,623					87,623	21,313	1.8%			
Colma	5,893	6,573					6,573	680	0.1%			
Daly City	137,200	171,714					171,714	34,514	3.6%			
East Palo Alto	39,809	49,561					49,561	9,752	1.0%			
Foster City	65,556	83,482					83,482	17,926	1.8%			
Half Moon Bay	22,529	27,153					27,153	4,624	0.6%			
Hillsborough	42,702	53,976					53,976	11,274	1.1%			
Menlo Park	96,068	120,510					120,510	24,442	2.5%			
Millbrae	40,061	52,493					52,493	12,432	1.1%			
Pacific	55,124	70,095					70,095	14,971	1.5%			
Portola Valley	17,023	20,813					20,813	3,790	0.4%			
Redwood City	151,756	191,192					191,192	39,437	4.0%			
San Bruno	67,263	83,958					83,958	16,695	1.8%			
San Carlos	66,928	85,841					85,841	18,913	1.8%			
San Mateo	177,767	230,795					230,795	53,028	4.9%			
South San Francisco	132,722	170,677					170,677	37,955	3.6%			
Woodside	26,596	33,229					33,229	6,633	0.7%			
Total Revenue	\$3,845,788	\$1,678,022	\$1,630,522	\$410,000	\$300,000	\$728,143	\$4,746,686	\$900,898	100.0%			
DEM Personnel	687,928	379,084	379,084				758,167	70,239	55.2%			
DEM On-Call Pay and Benefit Costs	23,691	107,319	107,319				214,639	190,948	15.6%			
DEM Management/Admin Fees	290,477	138,145	138,145				276,291	(14,187)	20.1%			
Environmental Health Hazmat Personnel	123,218	61,609	61,609				123,218	0	9%			
Total Personnel	\$1,125,314	\$686,157	\$686,157	\$0	\$0	\$0	\$1,372,314	\$247,000	100.0%			
San Mateo Consolidated Hazmat Contract	817,317	425,221	425,221				850,441	33,124	37.5%			
San Mateo Consolidated Fire Battalion Chief Contract	240,414	0	0				0	(240,414)	0.0%			
Environmental Health Hazmat Services/Supplies	55,458	24,229	24,229				48,458	(7,000)	2.1%			
ESC Programs	880,420	189,071	189,071			728,143	1,106,285	225,865	48.8%			
Hazmat New Firefighter Training	40,945	21,292	21,292				42,583	1,638	1.9%			
Alert & Warning	52,500	87,556	87,556				175,111	122,611	7.7%			
DEM Services/Supplies	28,545	21,155	21,155				42,310	13,765	1.9%			
Total Services & Supplies	\$2,115,599	\$768,523	\$768,523	\$0	\$0	\$728,143	\$2,265,188	\$149,589	100.0%			
Regional Operations Center Facility Expense & Maintenance	\$472,812	247,720	247,720				495,439	22,627	44.7%			
All Other Service Charges	\$132,063	306,873	306,873				613,745	481,682	55.3%			
Total Other Services	\$604,875	\$554,592	\$554,592	\$0	\$0	\$0	\$1,109,184	\$504,309	100.0%			
Total Expenditures	\$3,845,788	\$2,009,272	\$2,009,272	\$0	\$0	\$728,143	\$4,746,686	\$900,898	23%			



COUNTY OF SAN MATEO
EMERGENCY
MANAGEMENT

Dr. Shruti Dhapodkar
Director

County Government Center
501 Winslow Street
Redwood City, CA 94063
(650) 363-4790
www.smcgov.org/dem

Date: April 16, 2025
To: Emergency Services Council (ESC)
Cc: Adam Ely, Deputy County Executive
From: Dr. Shruti Dhapodkar, Director
Subject: Director's Update

SMC Emergency Management (SMC EM) is actively leading several initiatives to strengthen emergency preparedness and build long-term resilience for the County. Key projects include the development of the All Hazards Evacuation Plan (AHEP), the Coastside Resilience Infrastructure Strategic Plan (CRISP), and Operational Area (OA) and community outreach activities designed to enhance public readiness while boosting SMC EM's brand recognition.

- As part of the All Hazards Evacuation Plan (AHEP) project, SMC EM hosted a Wildfire Tabletop Exercise on Monday, March 10, 2025, with participation from Operational Area partners and neighboring agencies. The exercise guided participants through wildfire scenarios specific to South San Francisco, offering valuable insights into emergency response strategies from our Law and Fire partner agencies. Additionally, participants were introduced to Ladriz, an AI-powered evacuation modeling software designed to assist with evacuation planning in their local jurisdictions. This session not only provided SMC EM and Operational Area partners the opportunity to discuss and refine processes and procedures for responding to a real-world wildfire emergency but also provided an overview of Ladriz's capabilities to support preparedness and response efforts.

SMC EM participated in CSTI's Evacuation and Re-Entry Training funded by the Bay Area Urban Areas Security Initiative (UASI) on Tuesday, March 25, and Wednesday, March 26, 2025. This training provided valuable insight into best practices, coordination strategies, and operational considerations for large-scale evacuations and re-entry operations. It directly supports the development of the AHEP by enhancing the project team's knowledge, strengthening OA collaboration, and ensuring consistency with statewide standards.

SMC EM continues to progress on developing the AHEP, with the base plan and the accompanying work plan expected to be completed by June 2025. Throughout this

process, SMC EM continues to actively engage stakeholders and Operational Area (OA) partners to gather input and incorporate their feedback into both documents. Once the base and work plans are finalized, SMC EM will establish an AHEP Work Group to assist partners in creating jurisdiction-specific evacuation plans. Each OA partner will designate one representative to serve on the AHEP Work Group and report back to their agency or jurisdiction to carry out the planning and implement the work. While SMC EM will provide the foundational base plan and work plan to guide our OA partners, our partners will remain responsible for developing their evacuation plans with our continued support.

- The Coastside Resilience Infrastructure Strategic Plan (CRISP) project has been successfully completed in collaboration with Supervisor Mueller. The project received 106 submissions from partners, resulting in the prioritization of 22 critical infrastructure projects.

On Thursday, March 6, 2025, SMC EM hosted a CRISP Stakeholder Follow-Up meeting attended by 44 partners. The CRISP dashboard was presented, and key project findings were shared. During the meeting, time was also spent addressing questions and gathering feedback from partners to ensure their insights were thoroughly considered.

SMC EM will receive the California Emergency Services Association (CESA) Coastal Chapter Silver Award for this project on Wednesday, May 7, 2025. This award is presented for exceptional efforts in emergency management.

While the CRISP project has officially concluded, efforts to support and enhance the resilience of coastside infrastructure continue. The ongoing collaboration will ensure the region's infrastructure remains adaptive and prepared for future challenges.

- SMC EM participated in Bay Area UASI's two-day Active Shooter Full-Scale Exercise at Oracle Park on Tuesday, March 4, and Wednesday, March 5, 2025. The SMC EM planning team gained valuable insights to support the planning and executing the upcoming BayEx 2025 exercise, scheduled for Tuesday, May 13, 2025, in Burlingame, in coordination with the California National Guard's 95th Civil Support Team.
- SMC EM kicked off Tsunami Awareness Week on Monday, March 24, 2025, with a press conference led by SMC EM Director Dhapodkar and County Supervisors Gauthier and Mueller. During the event, SMC EM officially launched the County's Tsunami Map Dashboard, a new tool on the County website designed to help San Mateo County residents identify tsunami hazard zones and support their personal preparedness and response planning.

SMC hosted a tabletop exercise with OA partners and participated in the California Governor's Office of Emergency Services' (Cal OES) California Tsunami Exercise on Thursday, March 27, 2025. SMC EM tested text messaging protocols with OA partners who opted into the exercise and used the opportunity to discuss roles, responsibilities, and coordination during a tsunami event. Participating in these exercises strengthens regional collaboration, enhances communication workflows, and allows SMC EM and OA partners to identify and address gaps in emergency plans in a low-risk setting.

- SMC EM continues to support OA partners through ongoing alert and warning training. On Thursday, March 27, 2025, SMC EM hosted a virtual training session with the North County Fire Authority, providing a refresher on effective public messaging and demonstrating how alerts are issued using the SMC Alert platform.

SMC EM saw a 17.2% increase in SMC Alert sign-ups. This is an important milestone that reflects the department's continued commitment to strengthening public safety and community preparedness across the County.

- SMC EM will host a Wildfire & Safety event on Saturday, April 26, 2025, at the San Mateo County Event Center. This indoor public event aims to inspire community preparedness in response to the growing threat of wildfires. Attendees will hear from emergency response experts, connect with local agencies, and take home essential safety resources.

As SMC Emergency Management continues to engage and collaborate with stakeholders and the community, our focus remains on successfully advancing these key initiatives. We are committed to fostering ongoing partnerships that enhance the County's collective capacity to respond to future challenges effectively. By working together, we aim to strengthen our region's resilience, ensuring that we are well-prepared to meet evolving emergency management needs.

THIS PAGE INTENTIONALLY LEFT BLANK



Emergency Services Council Meeting

April 16, 2025

Agenda



- 1. Roll Call
- 2. Public Comments, Correspondence, Announcements
- 3. Action to Set Agenda and Approve Consent Agenda Items
- 4. San Mateo Consolidated Fire Dept. Hazmat Program Presentation
- 5. Emergency Services Council Proposed Budget FY2025-26
- 6 . Ladriss Evacuation Modeling Presentation
- 7. Director’s Update
- 8. Report Outs Related to ESC Members



Roll Call

Chair Person



Public Comments, Correspondence, Announcements

Clerk



Action to Set Agenda and Approve Consent Agenda Items

Chair Person



San Mateo Consolidated Fire Department Hazmat Program Presentation

Guest, Battalion Chief Jeff Thorne





Emergency Services Council

SAN MATEO COUNTY
HAZARDOUS MATERIALS RESPONSE TEAM



SAN MATEO COUNTY HAZMAT TEAM

- Established in 1984
- One of the first OES teams in California
- The need was established after a Methyl Bromide Incident in Belmont during 1973. Over a dozen firefighters were seriously injured, retired and several ultimately died from the chemical exposure
- Currently Operated by the San Mateo Consolidated Fire Department
 - Located at Fire Station 14 in Belmont
 - 33 Hazmat Technicians/Specialists
- Covers all of San Mateo County, including SLAC and San Francisco International Airport
- State OES recognized Type II Hazmat team



HAZMAT EMERGENCY
RESPONSE SECTION
OF THE SAN MATEO
COUNTY ENVIRONMENTAL
HEALTH DEPARTMENT

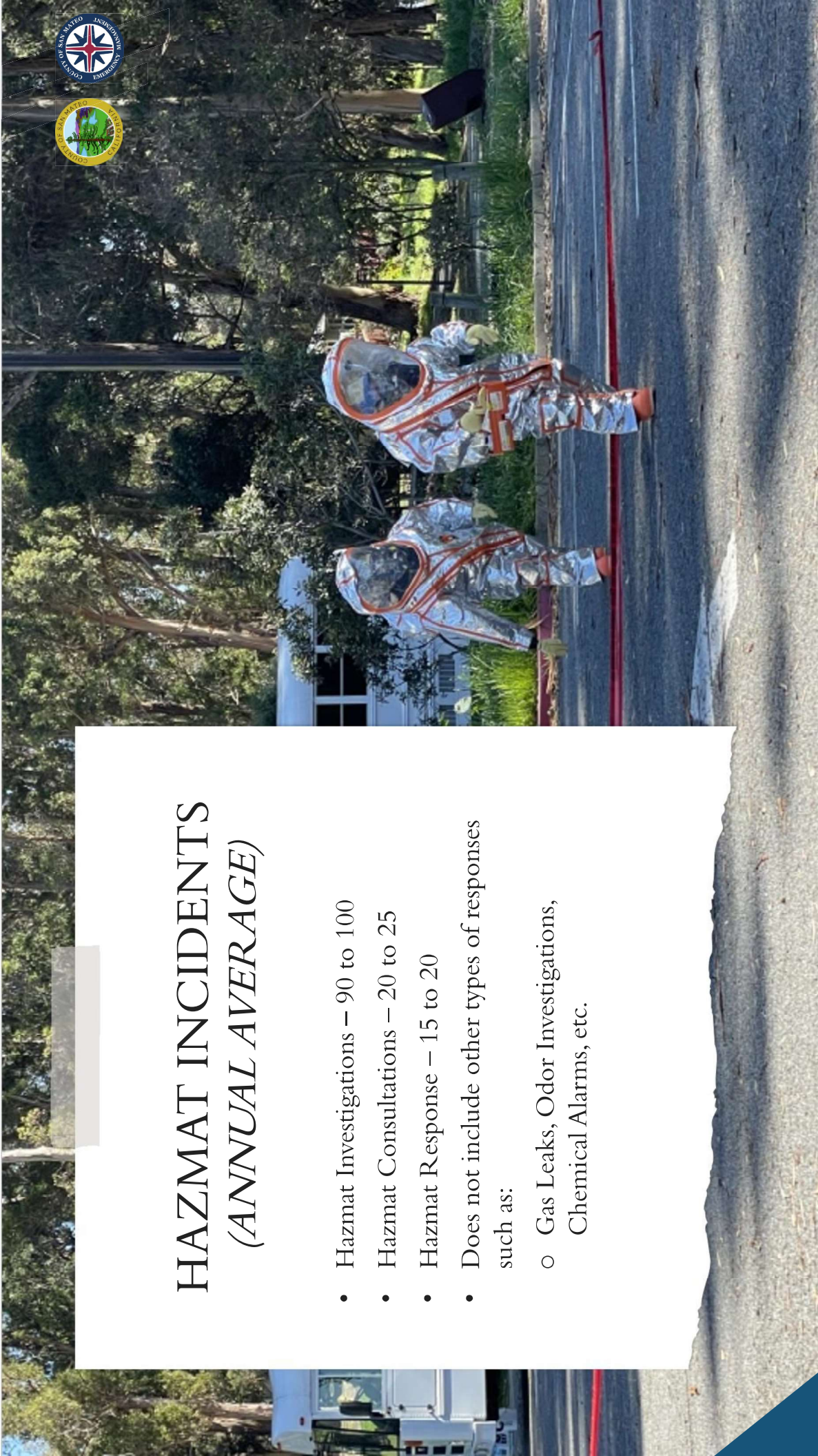


Health & Safety Code

Requires a plan to deal with a leak,
spill or release of a hazardous
material within their jurisdiction.

HAZMAT INCIDENTS (ANNUAL AVERAGE)

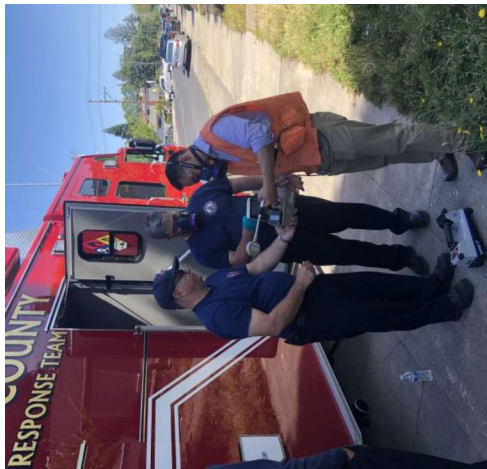
- Hazmat Investigations – 90 to 100
- Hazmat Consultations – 20 to 25
- Hazmat Response – 15 to 20
- Does not include other types of responses such as:
 - Gas Leaks, Odor Investigations, Chemical Alarms, etc.

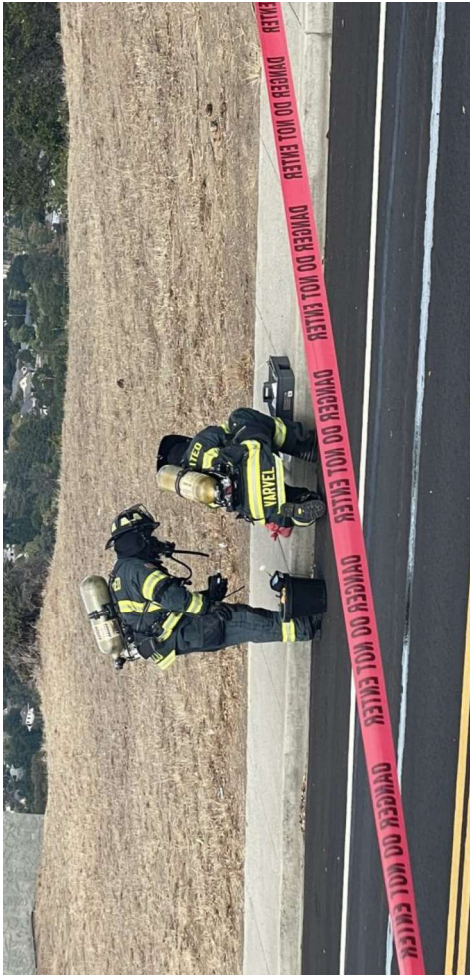


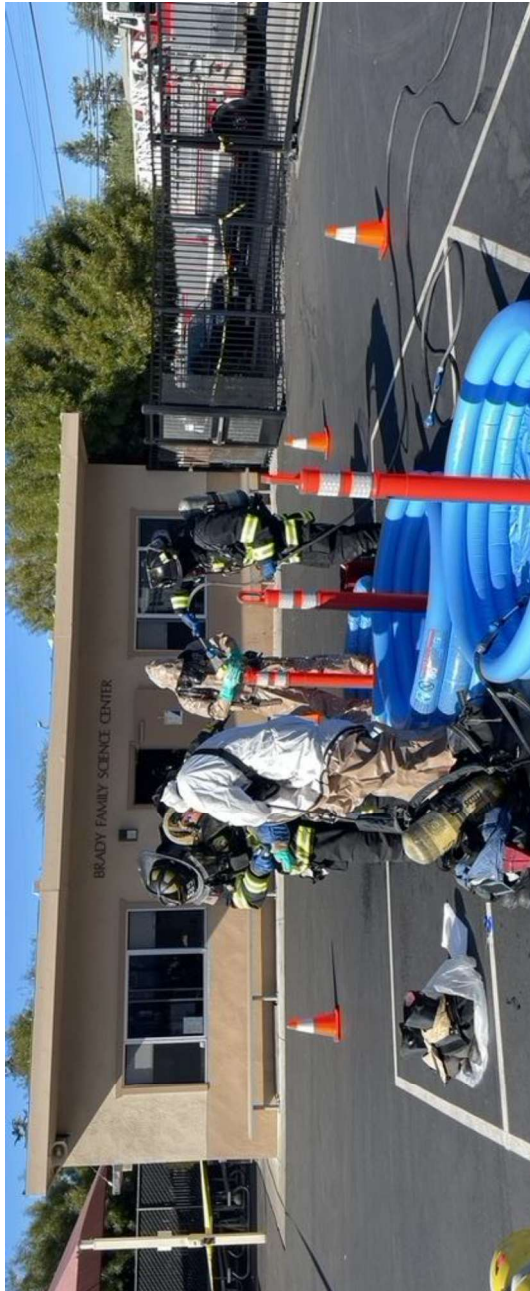
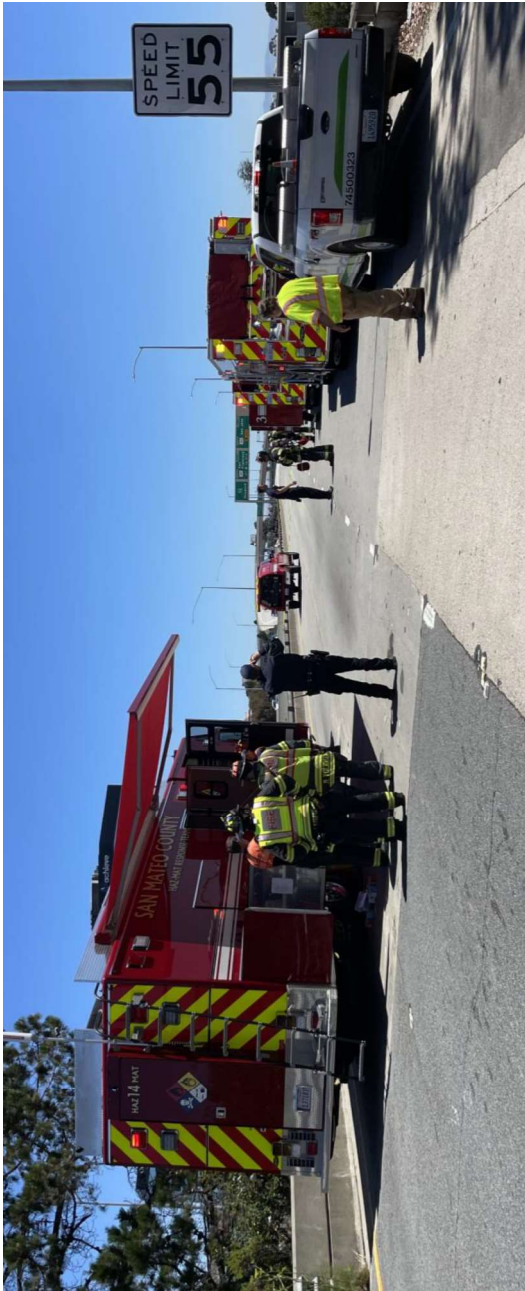
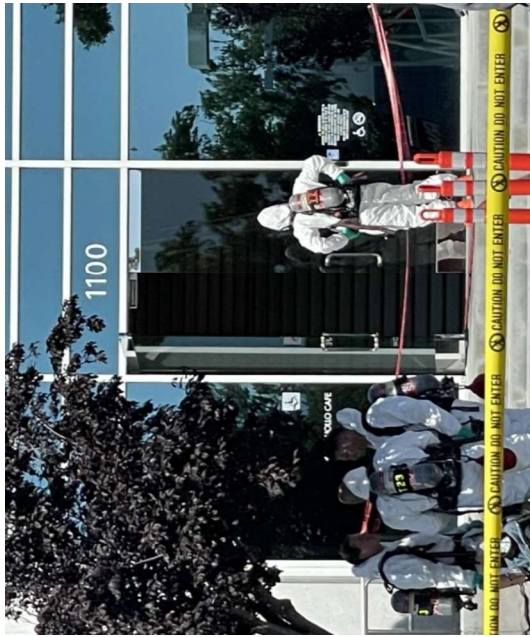


INCIDENT TYPES

- *White Powder Threats* – San Bruno
- *Radiological Incident* – San Carlos
- *Sarin Threat* – Menlo Park
- *UPS Chemical Release* – Menlo Park
- *Hydrogen Fluoride Release* – SFO
- *Chemical Spill* – Daly City
- *Mercury Spill* – San Mateo
- *Chemical Exposure with MCI* – Redwood Shores
- *Chemical Spills* – Burlingame
- *Nitrogen Leak* – South San Francisco and Foster City
- *Chemical Suicide* – Hillsborough

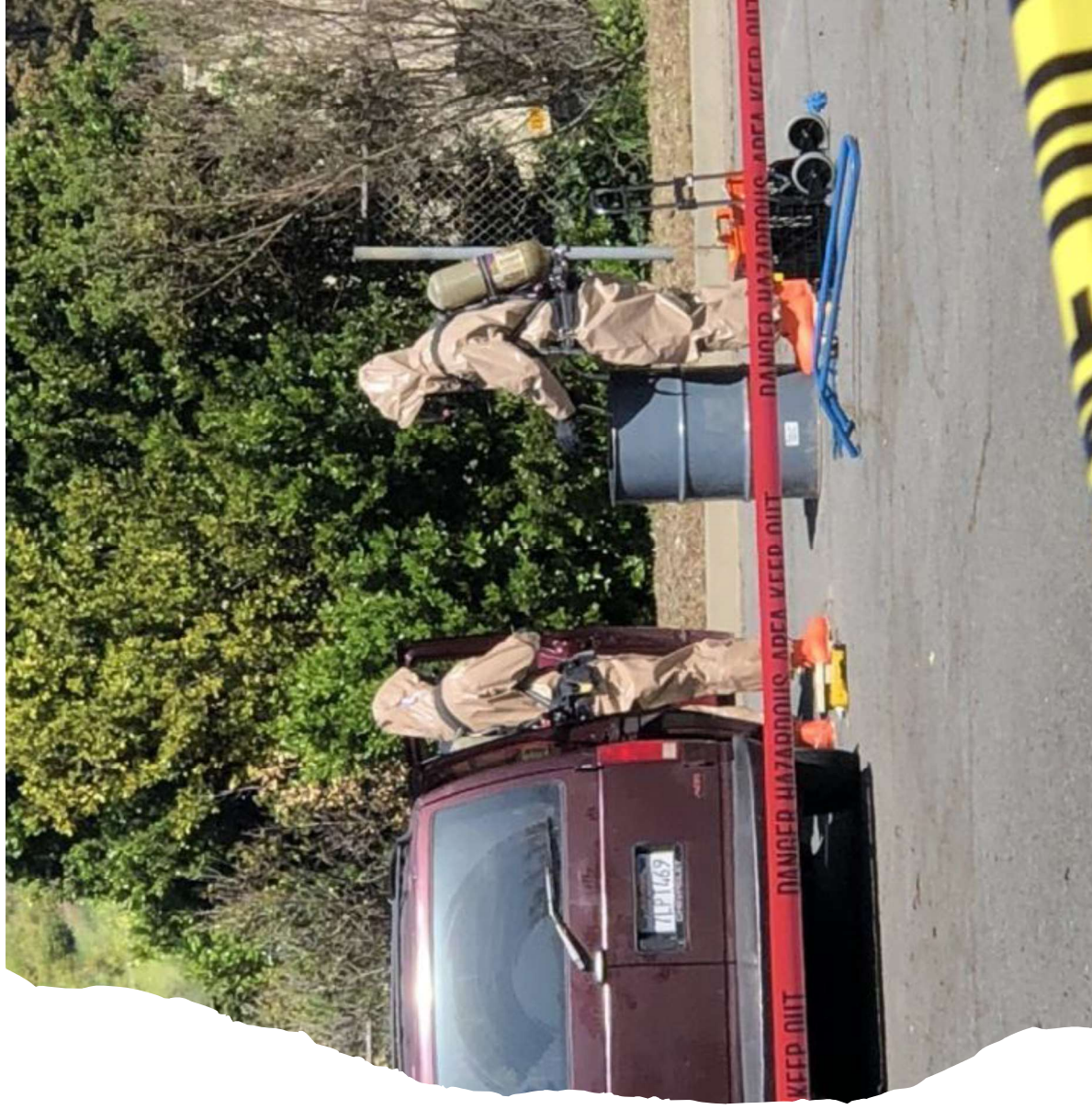






CHALLENGES

- Increasing Life Sciences
- Increase in Acts of Violence and Geopolitical Concerns
- Lithium-Ion Style Batteries and Energy Storage Systems
- More Exotic Chemicals, Less Legacy Chemicals being used
- More Chemicals are Being Transported, Many Unregulated
- Upcoming Large-Scale Events
- Mutual Aid Concerns
- Training Requirements
- Increased Staffing Requirements





EQUIPMENT CHALLENGES

- Primary Response vehicle is over 15 years old
- The current delivery time for a new vehicle is over five years.
- After 20 years, repair costs increase and parts are more difficult to obtain, thus increasing out of service time.
- All three previous vehicles were either donated or obtained through grant funding.
- Current cost is expected between \$1.8M and \$2.2M



• Questions?

Emergency Services Council Proposed Budget FY2025-26

Director

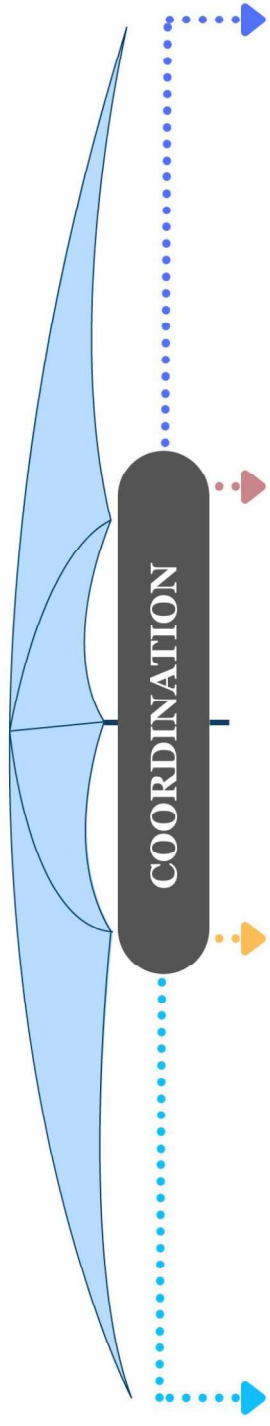


FY2025-26 Emergency Services JPA Proposed Budget



April 15, 2025

SMC Operational Area Coordination



Preparedness

- Planning
- Training
- Exercises
- Public Outreach & Education

Response

- Response Support
- Alert & Warning
- Op Area Coordination
- Mutual Aid
- Federal Compliance
- State Compliance

Mitigation

- Local Hazard Mitigation Plan
- Fire Mitigation
- Coastal Resiliency Infrastructure Strategic Plan

Recovery

- Recovery Support
- Liaison with the State
- Liaison with the Federal Agencies

Financial Landscape



- **“Perfect storm” of funding challenges:**
 - Risk of loss of grant funding due to potential policy changes from Federal Government.
 - The State, the County, and Member Agencies are all facing significant financial strain.
- **Rising operational costs** impacting all operational areas including cities and the County.
- **Cost-saving measures** implemented to create a lean and sustainable proposed budget.

FY2024-25 Expected End of Year Balance



FY2024-25 End of the Year Balance	Amount
Expected Value of the Trust Fund	\$570,754
Expected Value of the Vehicle Replacement Fund	\$0

- Minimum Floor for the Trust Fund is \$500k

FY2024-25 Estimated Actual End of Year Balance



FY2024-25 End of the Year Balance	Amount
Estimated Actual Value of the Trust Fund	\$801,945
Estimated Actual Value of the Vehicle Replacement Fund	\$519,257

- Minimum Floor for the Trust Fund is \$500k

FY2024-25 Estimated Cost Savings



FY2024-25 End of the Year Balance	Expected	Estimated	Estimated Cost Savings
Estimated Trust Fund Savings	\$570,754	\$801,945	\$231,191
Estimated Vehicle Replacement Fund	\$0	\$519,257	\$519,257
Total Estimated Cost Savings			\$750,448

Future Needs



- *Estimated Cost of Hazmat Fire Apparatus:* \$1.5 – 1.9
- *Estimated Cost of Environmental Health Vehicle:* \$0.3M
- *Estimated Total Cost:* -----
\$1.8M – 2.2M

Breakdown of Future Needs

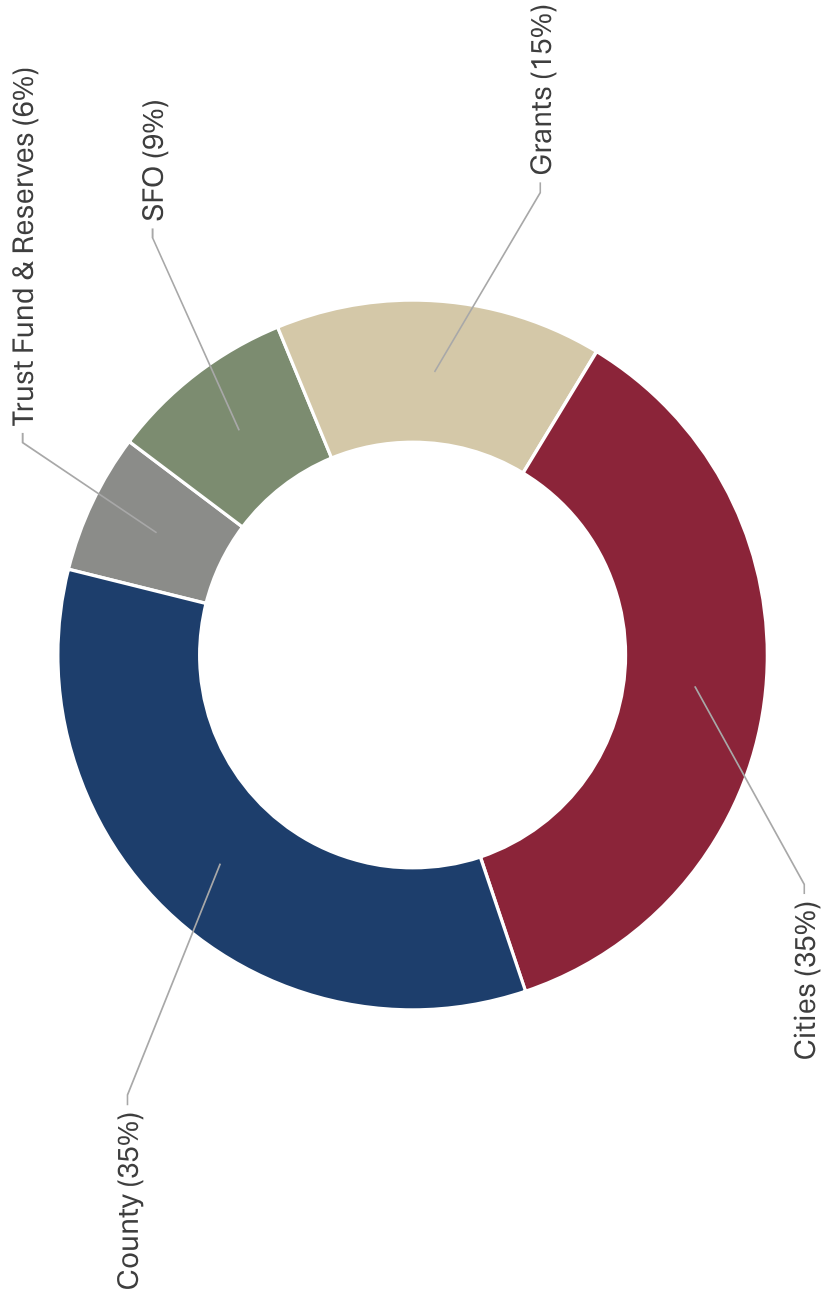


- The combined balance from the Vehicle Replacement Fund and expected Trust Fund Value at the end of FY2024-25 will likely be used towards Environmental Health and Hazmat vehicles.

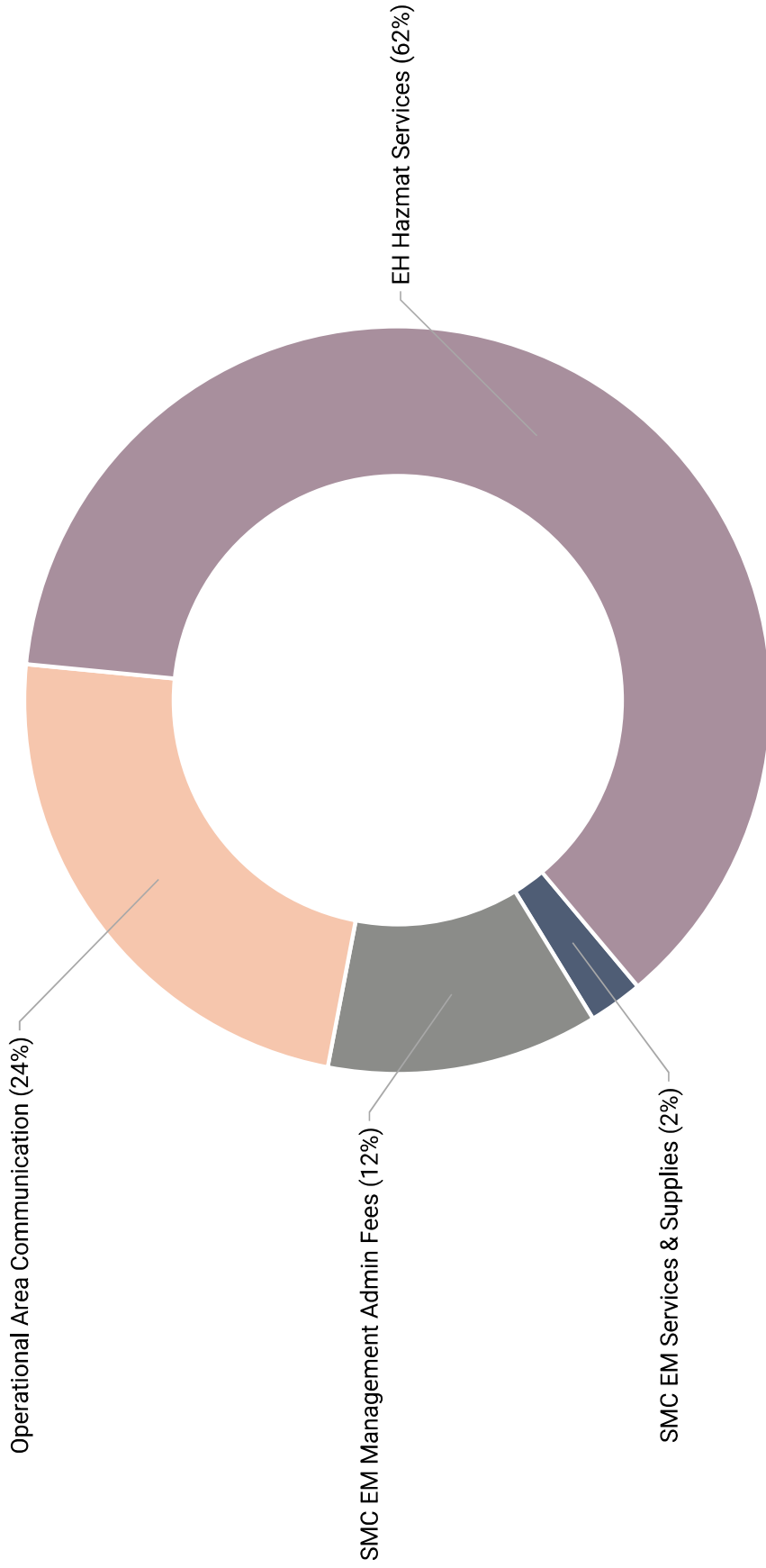
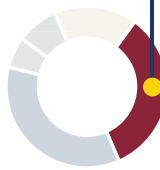
Fund Status Overview	Amount/Details
Estimated Year End Trust Fund Value	\$801,945
Anticipated Sinking Fund (5 Years)	\$150,000 per year x 5 years = \$750,000
Anticipated Total Funds Available	≈ \$1.37M
Expected Cost of Replacement	\$1.8M - \$2.2M
Shortfall in Funds	\$1.8M (Low-End Cost) - \$1.37M ≈ \$0.43M Shortfall on Low-End Cost

* Minimum Floor for the Trust Fund is \$500k

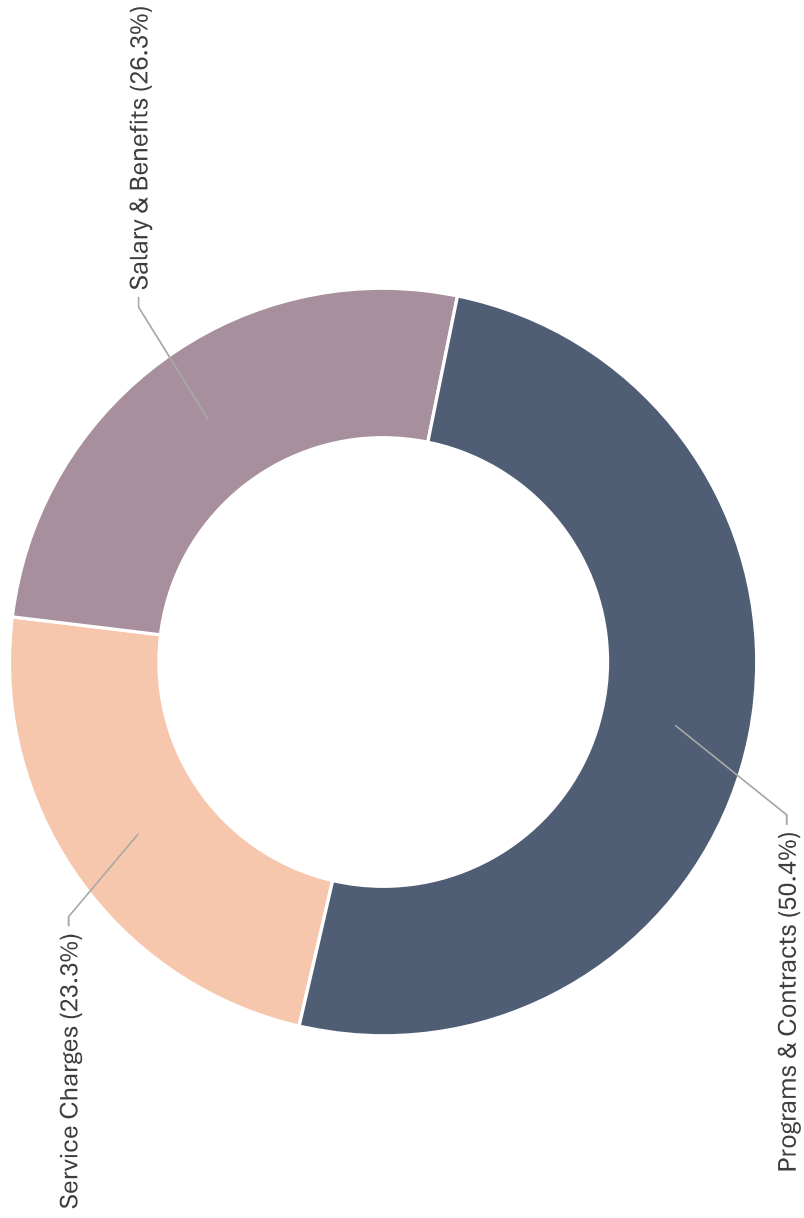
FY2025-26 ESC-JPA Proposed Budget (~ \$4.7M)



How Cities' \$1.7M Payment is Allocated



FY2025-26 ESC-JPA Expenses (~ \$4.7M)



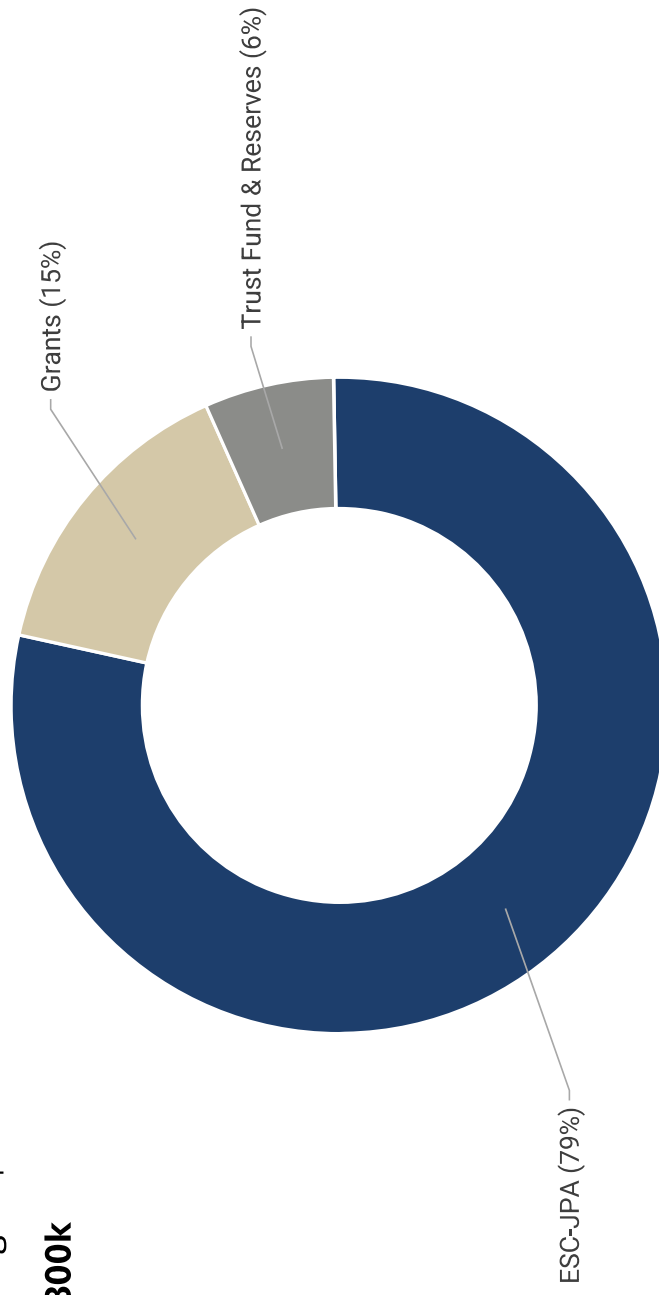
ESC Programs ~ \$1.1M



ESC Programs	Total FY 25-26	Grants	Cities	County
Local Hazard Mitigation Plan (LHMP)	\$600,000	\$475,000	\$62,500	\$62,500
Emergency Management Plans & Programs	\$250,000	\$125,000	\$62,500	\$62,500
Strategic Communications/Community Outreach	\$199,625	\$99,813	\$49,906	\$49,906
Emergency Management Training & Exercise	\$56,660	\$28,330	\$14,165	\$14,165
TOTAL	\$1,106,285	\$728,143 (66%)	\$189,071 (17%)	\$189,071 (17%)

Budget Recommendation

- FY2025-26 EC-JPA Proposed Budget: **\$4.7 million**
- Trust Fund & Reserves Total: **\$300k**
- **Vote Required**





Budget Recommendation – Vote Required

Adopt the FY 2025-26
Emergency Services JPA
Proposed Budget

Ladris Evacuation Modeling Presentation

Guest, Leo Zliman





Model Evacuations Before a Disaster Happens



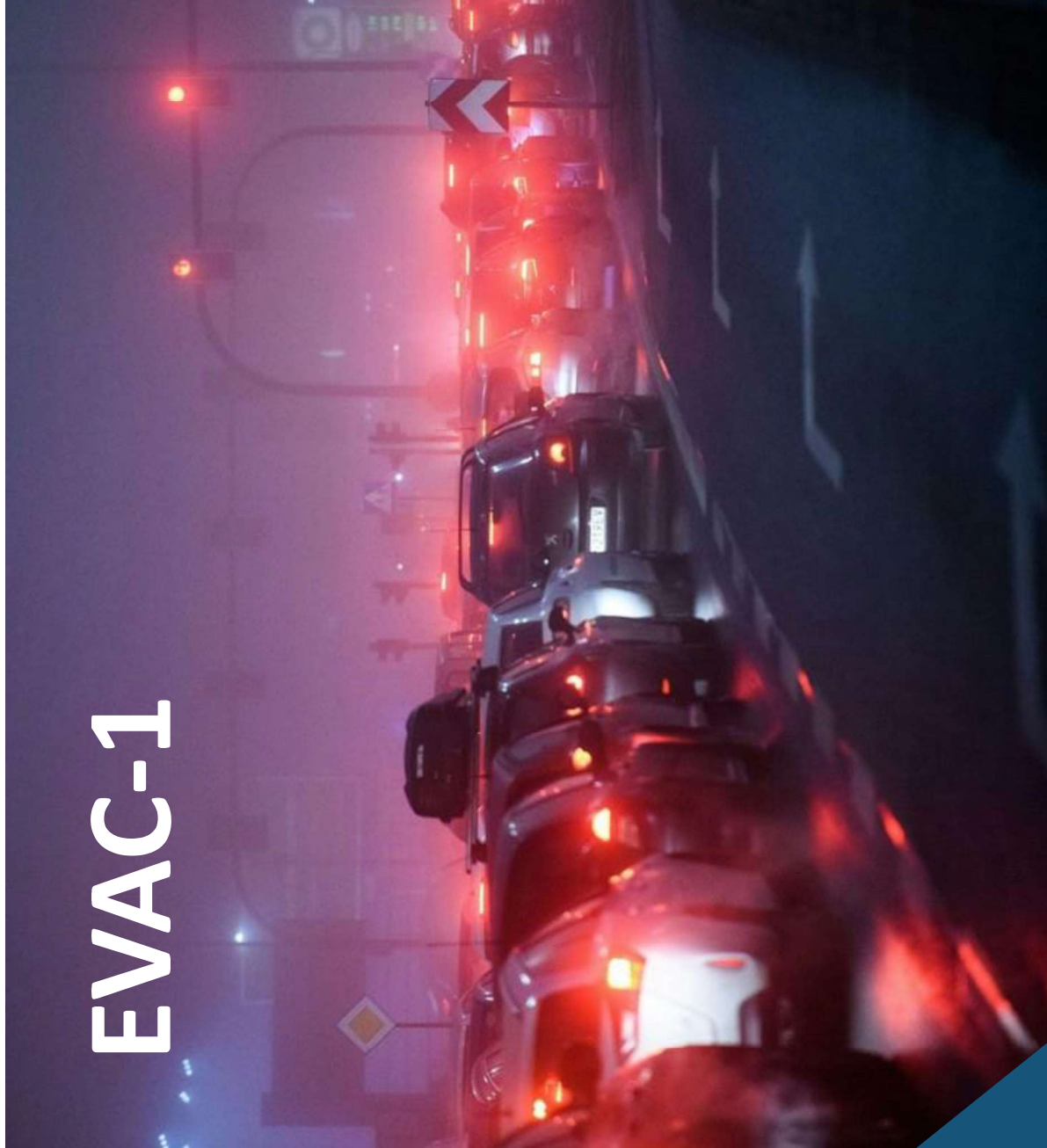
LADRIS 

Key Evacuation Challenges to Address

- How Long
- Who and In What Order
- Impacts of New Developments
- Identifying Target Mitigation Projects
- Stakeholder Support for Mitigation Efforts
- Resident Education



EVAC-1



**What-If
Simulations**

**AI-Driven
Predictions**

Operational Insights

LADRIS 

EVAC-1 Capabilities

County:

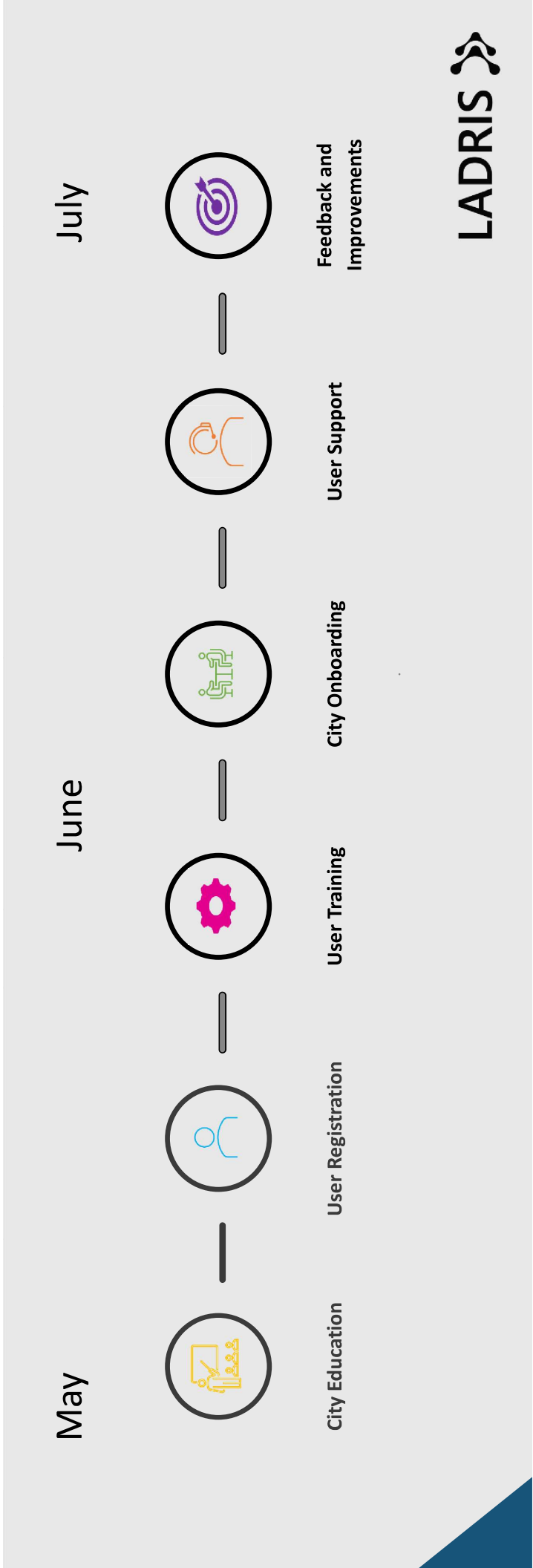
- Custom data sets
- Monte Carlo simulations
- Unlimited saved simulations
- Dedicated licensed environment
- White glove support

City:

- Base County data
- Evacuation simulations
- Limited saved simulations
- Shared SMC environment
- Phone and email support



San Mateo County-Cities EVAC-1 Implementation Roadmap

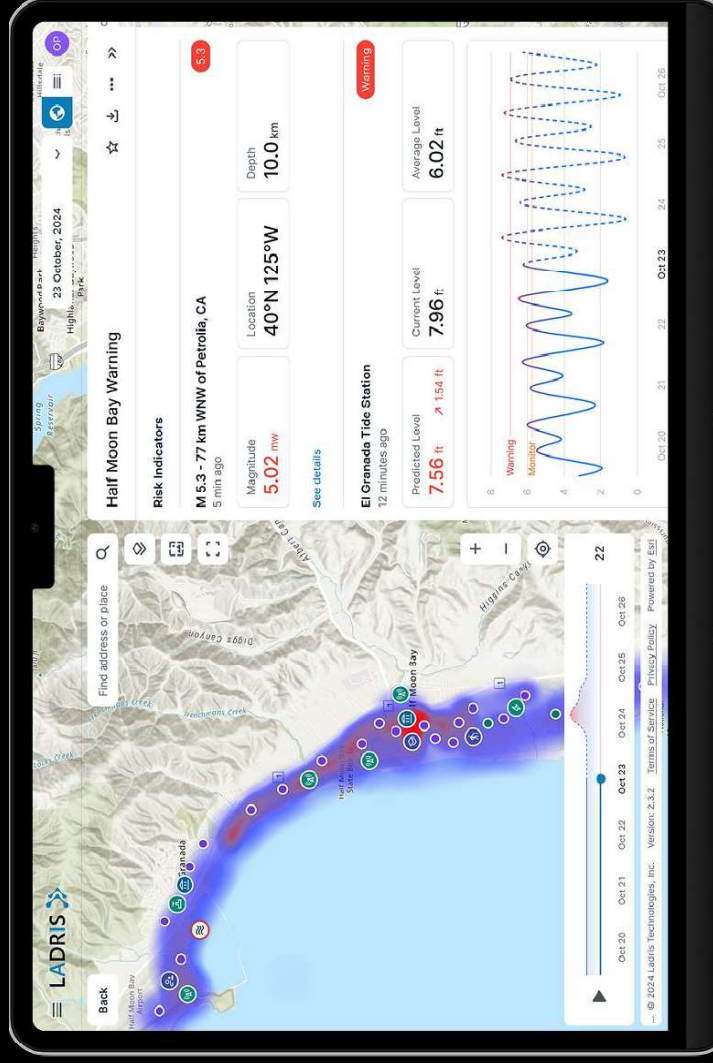


AI for Emergency Management



As the frequency and intensity of disasters increase, the need for advanced risk management solutions becomes more crucial than ever.

Real-time monitoring provides a comprehensive view of potential risks, enabling better preparedness across various domains.



LADRIS

Thank you!



Leo Zlimer
Chief Executive Officer

leo.zlimer@ladris.com
+1 (530) 305-5435



LADRIS 

Director's Update

Director



Report Outs Related to Emergency Services Council

Chair Person & Members



Thank you



THIS PAGE INTENTIONALLY LEFT BLANK

ANNEX A – San Mateo County Emergency Management Newsletter

San Mateo County Emergency Management (SMC EM) is continuing its series of newsletters designed to enhance communication and preparedness among emergency management professionals. These newsletters will provide critical updates on seasonal weather patterns, ensuring that professionals are well-informed about potential hazards and can plan accordingly. Additionally, the newsletters will offer guidance on effective media messaging strategies, helping professionals communicate key information to their local communities.

By consolidating essential information into one easy-to-access document, SMC EM aims to equip emergency management professionals with the tools and knowledge necessary to improve preparedness and response efforts in the respective communities that they serve.

THIS PAGE INTENTIONALLY LEFT BLANK



SUMMER AWARE SMC *When Relaxation Meets Readiness*

As summer approaches in San Mateo County, we face a paradox

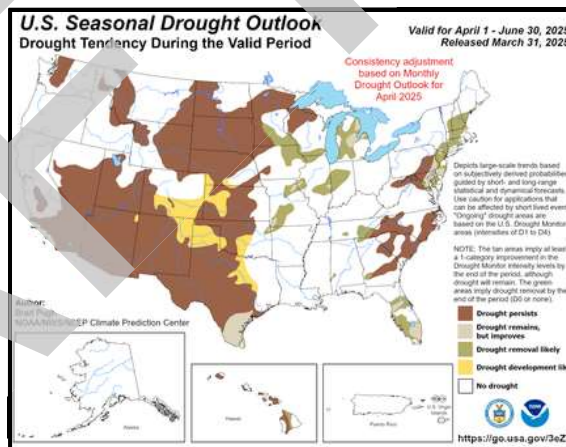
While the season brings opportunities for relaxation and outdoor enjoyment, it also introduces unique hazards that demand our vigilance. Research shows that during summer months, both parents and individuals tend to lower their emergency preparedness guard when certain risks increase.

University of Michigan researchers found that the "vacation mindset" significantly reduces emergency planning, with fewer than 60% of adults reporting adequate preparation for severe weather events. Similarly, studies of summer camps reveal that over half lack critical emergency protocols—a concerning gap when thousands of San Mateo County children attend these programs. This newsletter provides essential guidance for navigating summer's specific challenges: from coastal hazards and microclimates to wildfire risks and heat emergencies. Summer in San Mateo County can be our safest season—but only if we maintain awareness while we enjoy all it has to offer.

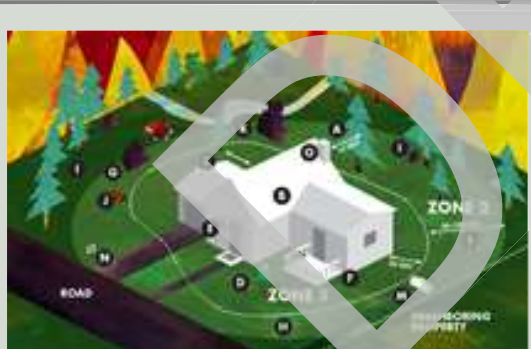
Seasonal Weather and Drought Updates

As summer approaches, San Mateo County faces an increased likelihood of above-normal temperatures, according to NOAA's latest seasonal forecast. San Mateo County's diverse geography results in significant temperature differences across short distances. While coastal areas may remain cool and foggy, inland cities like Redwood City and San Carlos can see temperatures 15-20°F higher.

Currently, California is not in a drought; however, forecasts suggest droughts could develop as summer progresses. Inland communities should be ready for heat waves and take necessary precautions. Coastal residents should monitor fog patterns and marine conditions. All residents should continue practicing water conservation. Fire risk will rise as vegetation dries, increasing the need for wildfire preparedness.



SUMMER HAZARD FOCUS



Wildfire Preparedness

- Create defensible space around your home by clearing vegetation
- Register for Alert SMC to receive emergency notifications
<https://www.smcgov.org/dem/smc-alert>
- Know your evacuation zone by visiting
<https://www.smcgov.org/dem/genasys-zonehaven>
- Prepare a "go bag" with essentials for quick evacuation

Beach and Water Safety

As thousands flock to our beautiful coastline this summer, remember these critical safety tips:

- Always check tide conditions before visiting beaches
- Never turn your back on the ocean – sneaker waves can occur without warning
- If caught in a rip current, swim parallel to shore until free from the current before heading to land

How We Serve Across All Conditions

San Mateo County Emergency Management operates seamlessly across three operational states to ensure your community's safety:





Department of Emergency Management



Apr-Jun 2025

County of San Mateo

Vol. 2 No. 2

SUMMER AWARE SMC

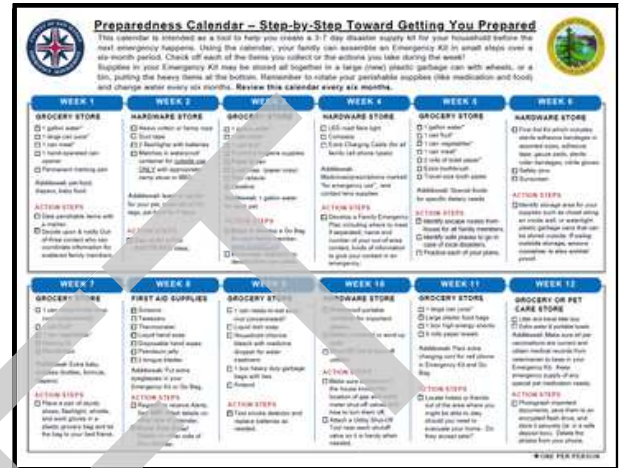
Sizzling Summer: Weather Words to Know

- **Extreme Heat Warning** (formerly Excessive Heat Warning): Dangerous heat *is happening* or about to happen.
- **Extreme Heat Watch** (formerly Excessive Heat Watch): Extreme heat *could* happen soon
- **Heat Advisory**: Conditions that *don't* reach warning levels but still pose risks.
- **Red Flag Warning**: Critical fire weather conditions strong winds, low humidity, and dry vegetation—are expected.

30-Day Summer Prep Challenge

Get your family prepared while having fun! Follow our emergency preparedness calendar for 30 days, complete all activities, and submit your story to enter our prize drawing!

Visit <https://www.smcgov.org/dem/dem-preparedness-calendar> to download the calendar.



SUNNY DAYS AND SAFER WAYS

Understanding the UV Index

The UV Index measures the strength of ultraviolet (UV) radiation from the sun, helping you gauge your risk of skin damage and eye injury. Ranging from 0 (low) to 11+ (extreme), higher values mean greater potential harm. Check the UV Index daily and take precautions—wear sunscreen, sunglasses, and protective clothing to stay safe outdoors. Visit <https://www.epa.gov/sunsafety/uv-index-1> or check your local weather app for daily updates.

Community Engagement Calendar

- April 26:** Be Wildfire Ready and Safe, Redwood City
- May 2:** San Mateo County Career Fair, Redwood City
- June:** Coastside Community Preparedness Day, Location TBD
- August 2:** Disaster Preparedness Day, San Mateo Event Center

For complete details and additional events, visit <https://www.smcgov.org/dem/events>

Kids Corner: Summer Camp Safety

Research shows that many summer camps lack comprehensive emergency plans, with over 50% missing online emergency protocols and adequate planning for power outages, lockdowns, and severe weather events.

Before sending your child to camp this summer, ask:

- ✓ Does the camp have written emergency procedures for fires, earthquakes, and evacuations?
- ✓ How will staff communicate with parents during emergencies?
- ✓ What training do counselors receive for handling medical emergencies?
- ✓ How does the camp accommodate children with special needs during emergencies?
- ✓ Are emergency supplies and "go kits" available on-site?

The safest camps conduct regular emergency drills and have clear procedures for reuniting children with families during emergencies.

Test Your Knowledge Summer Safety Quiz

- 1. What's the safest way to stay cool during a heatwave?**
 - A) Drink plenty of water and stay indoors with air conditioning
 - B) Wear heavy, dark clothing to absorb sweat
 - C) Wait until you feel thirsty before drinking water
 - D) Rely only on electric fans
- 2. How long should your emergency kit last during a disaster?**
 - A) 24 hours
 - B) 3 days
 - C) 1 week
 - D) 2 weeks
- 3. What should you do if caught in a rip current at the beach?**
 - A) Swim straight back to shore as fast as possible
 - B) Relax, float, and swim parallel to the shore until you escape the current
 - C) Call for help and tread water in place
 - D) Hold your breath and dive under the current

Answers:
1. A) Drink plenty of water and stay indoors with air conditioning. Fans help, but they don't lower body temperature in extreme heat.
2. C) 1 week. While 3 days is a common recommendation, Bay Area disasterers like earthquakes or wildfires may require longer preparedness.
3. B) Relax, float, and swim parallel to the shore until you escape the current. Then, swim at an angle back to shore.

ANNEX B – San Mateo County Emergency Management Newsletter

San Mateo County Emergency Management (SMC EM) is committed to engaging and informing the County's diverse communities. As part of this effort, information about community preparedness events is shared in English, Chinese, and Spanish to ensure that key event information is accessible to all residents, regardless of language background.

By providing materials in multiple languages, SMC EM is working to remove language barriers that can prevent individuals and families from accessing life-saving information. This inclusive approach broadens community participation and strengthens public safety by empowering more residents to take informed action before, during, and after emergencies.

BE WILDFIRE SAFE & READY!

Join us for a FREE event to help you and your family get ready for wildfires. Learn from emergency response experts, connect with local agencies, and take home vital preparedness resources.

Saturday April 26, 2025
10:00 AM - 1:00 PM

San Mateo County
Event Center
1346 Saratoga Drive
San Mateo, CA 94403

FREE Parking
FREE Admission
FREE Resources



***Don't be Scared,
Be Prepared!***

保持火灾安全， 做好准备！

加入我们免费活动，帮助您和家人做好火灾季节的准备。你可以向紧急应对专家学习，与当地机构建立联系，并带回重要的准备材料。

2025年4月26日，星期六
上午10:00 - 下午1:00

圣马刁县活动中心
1346 Saratoga Drive
San Mateo, CA 94403

免费停车
免费入场
免费资源



**不要恐慌，
做好准备！**

¡MANTÉNGASE LISTO Y SEGURO PARA INCENDIOS!



Únase con nosotros para este evento GRATUITO para ayudarle a usted y su familia estar mejor preparado para enfrentar emergencias como un incendio. Oiga consejos de expertos en emergencias, conecte con agencias y llévese a casa recursos vitales para su preparación.



Sábado, 26 de Abril 2025
10:00 AM - 1:00 PM

Centro para Eventos del Condado de San Mateo
1346 Saratoga Drive
San Mateo, CA 94403



Estacionamiento GRATUITO
Admisión GRATUITO
Recursos GRATUITOS



***¡No tenga Miedo,
Manténgase
Preparado!***