



Don Horsley County Park at Tunitas Creek Beach

San Mateo County Parks Presentation for Bicycle and Pedestrian Advisory
Committee June 2025

Overview

- Park Improvements
- Visitor Access
- Caltrans Right of Way
- Traffic Considerations
- Bicycle & Pedestrian use



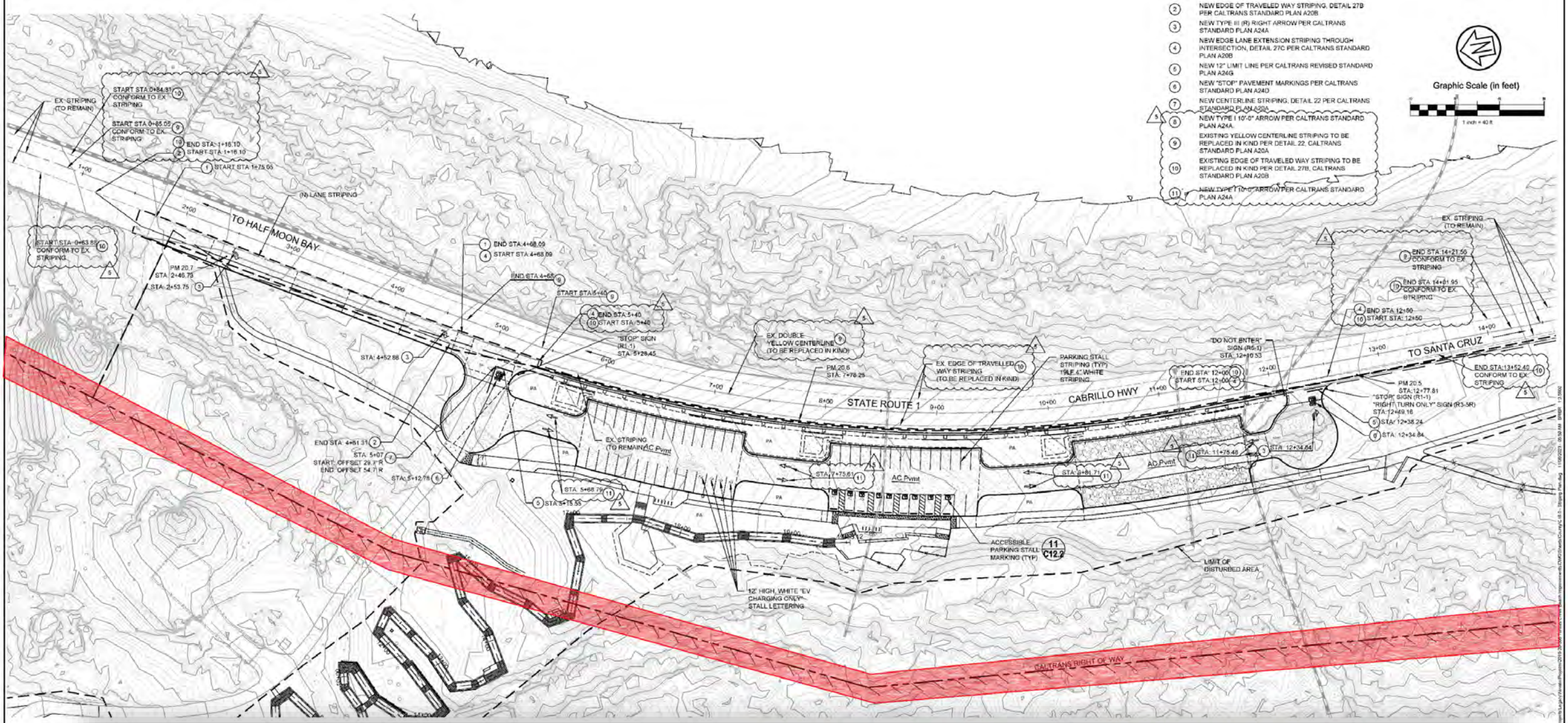


Current Status of Construction

Jun 4, 2025 at 7:57:18 AM
Half Moon Bay CA 94019
United States



2025/05/22 08:05:06



Caltrans Right of Way



Oct 30, 2024 at 10:05:27 AM
20425–20635 Cabrillo Hwy S
Half Moon Bay CA 94019
United States

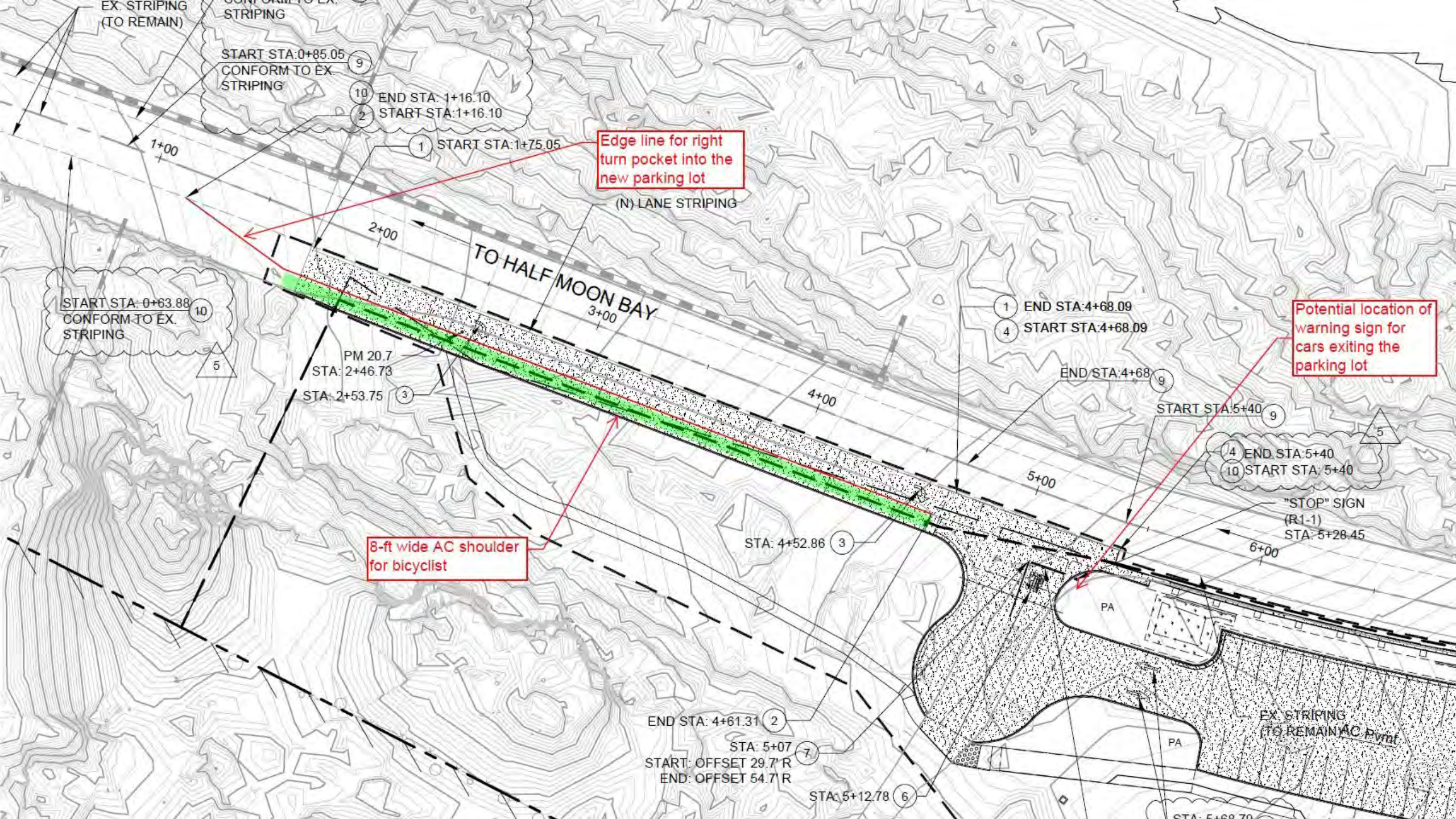


Parking Lot

Oct 21, 2024 at 9:43:45 AM
20637–20799 Cabrillo Hwy S
Half Moon Bay CA 94019
United States

Traffic Considerations





START STA: 0+85.05
CONFORM TO EX. STRIPING

9

10

2

END STA: 1+16.10
START STA: 1+16.10

Edge line for right turn pocket into the new parking lot

START STA: 0+63.88
CONFORM TO EX. STRIPING

10

5

PM 20.7
STA: 2+46.73

STA: 2+53.75

3

8-ft wide AC shoulder for bicyclist

(N) LANE STRIPING

TO HALF MOON BAY

3+00

1

4

END STA: 4+68.09
START STA: 4+68.09

END STA: 4+68

9

START STA: 5+40

9

4

10

END STA: 5+40
START STA: 5+40

Potential location of warning sign for cars exiting the parking lot

"STOP" SIGN (R1-1)
STA: 5+28.45

END STA: 4+61.31

2

STA: 5+07

7

START: OFFSET 29.7' R
END: OFFSET 54.7' R

STA: 5+12.78

6

EX. STRIPING (TO REMAIN) AC Paved

STA: 5+68.70