

# **Ordinance Establishing 25 MPH Speed Limits on Portions of Santa Cruz Avenue and Alameda de las Pulgas**

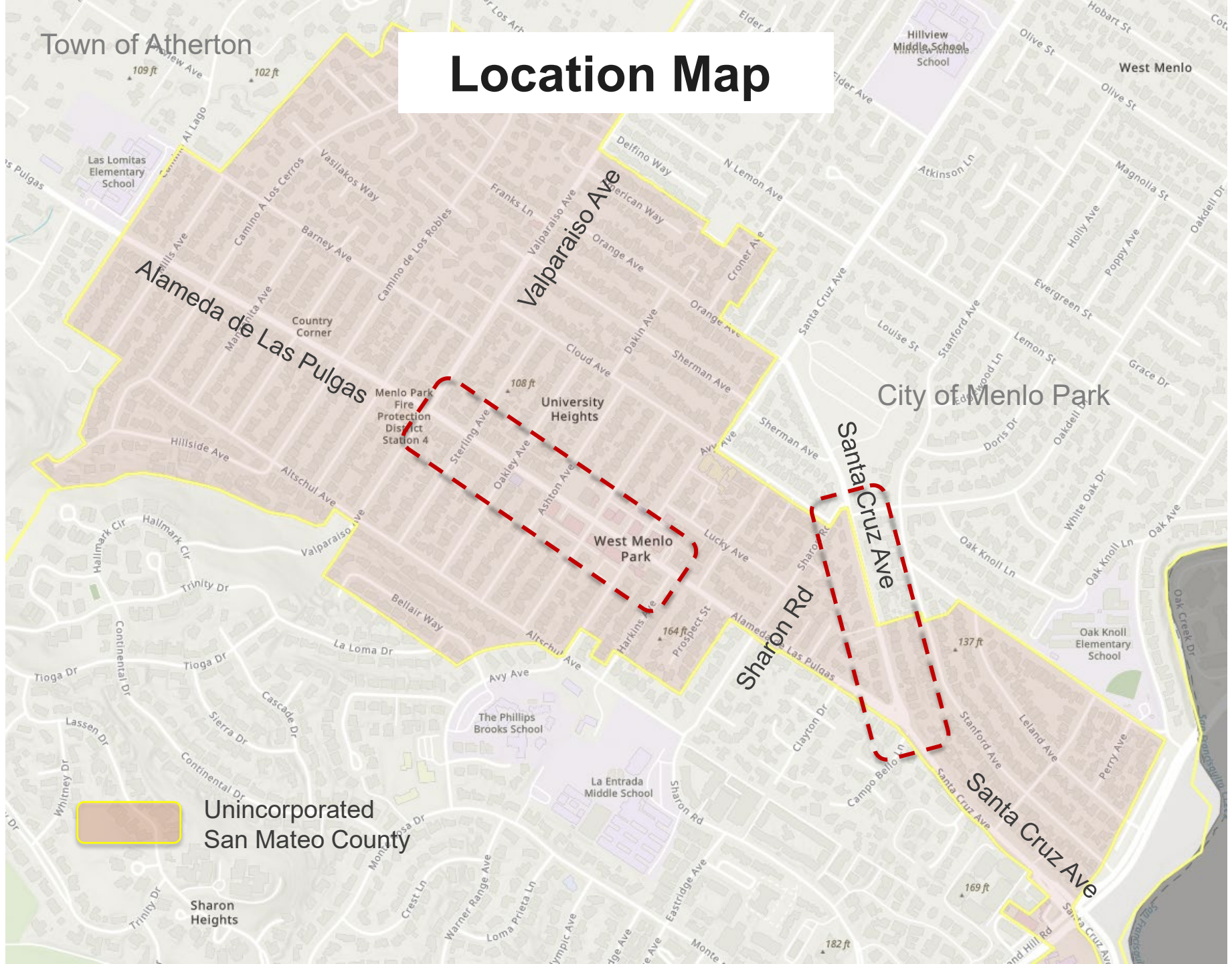


## **Department of Public Works**

**San Mateo County Bicycle and Pedestrian Advisory Committee**

April 17, 2025

# Location Map



Town of Atherton

Hillview Middle School  
School

Las Lomitas Elementary School

Alameda de Las Pulgas

Menlo Park Fire Protection District Station 4

Valparaiso Ave

University Heights

West Menlo Park

City of Menlo Park

Santa Cruz Ave

Oak Knoll Elementary School

The Phillips Brooks School

La Entrada Middle School

Unincorporated San Mateo County

Sharon Heights

Santa Cruz Ave

# Existing Speed Limits

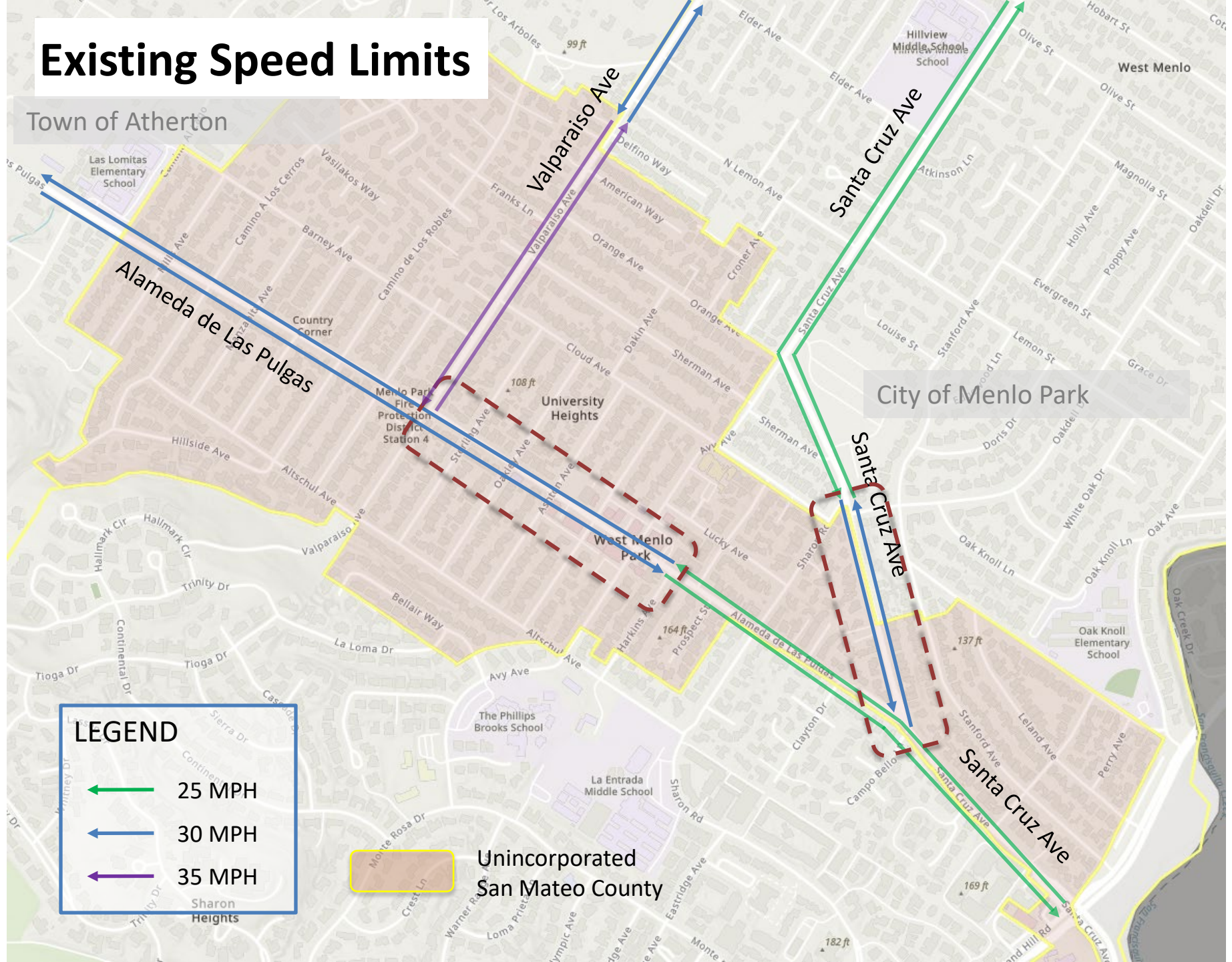
Town of Atherton

City of Menlo Park

Unincorporated San Mateo County

**LEGEND**

- ← 25 MPH
- ← 30 MPH
- ← 35 MPH



# Existing Codes

## Section 22352(b)(1) of the California Vehicle Code (CVC)

- Prima facie speed limit of 25 miles per hour exists on any highway in any business or residential district unless a different speed is determined by local authority under procedures set forth in the code.

## Section 22358.6(b) of the California Vehicle Code (CVC)

- In cases in which the speed limit needs to be rounded down to the nearest five miles per hour increment of the 85th-percentile speed, the Department of Transportation or a local authority may lower the speed limit by five miles per hour from the nearest five mile per hour increment of the 85th-percentile speed, in compliance with Sections 627 and 22358.5 and the California Manual on Uniform Traffic Control Devices, as it read on March 30, 2021, if the reasons for the lower speed limit are documented in an engineering and traffic survey.



# Existing Codes

## Section 40802(b)(1) of the California Vehicle Code (CVC)

- (b)(1) For purposes of this section, a local street or road is one that is functionally classified as “local” on the “California Road System Maps,” that are approved by the Federal Highway Administration and maintained by the Department of Transportation. It may also be defined as a “local street or road” if it primarily provides access to abutting residential property and meets the following three conditions:
  - (A) Roadway width of not more than 40 feet.
  - (B) Not more than one-half of a mile of uninterrupted length. Interruptions shall include official traffic control signals as defined in Section 445.
  - (C) Not more than one traffic lane in each direction.

**Local Streets are exempt from certain speed trap provisions and may be radar enforceable without an Engineering & Traffic Survey per CVC Section 40802(a)(2)**

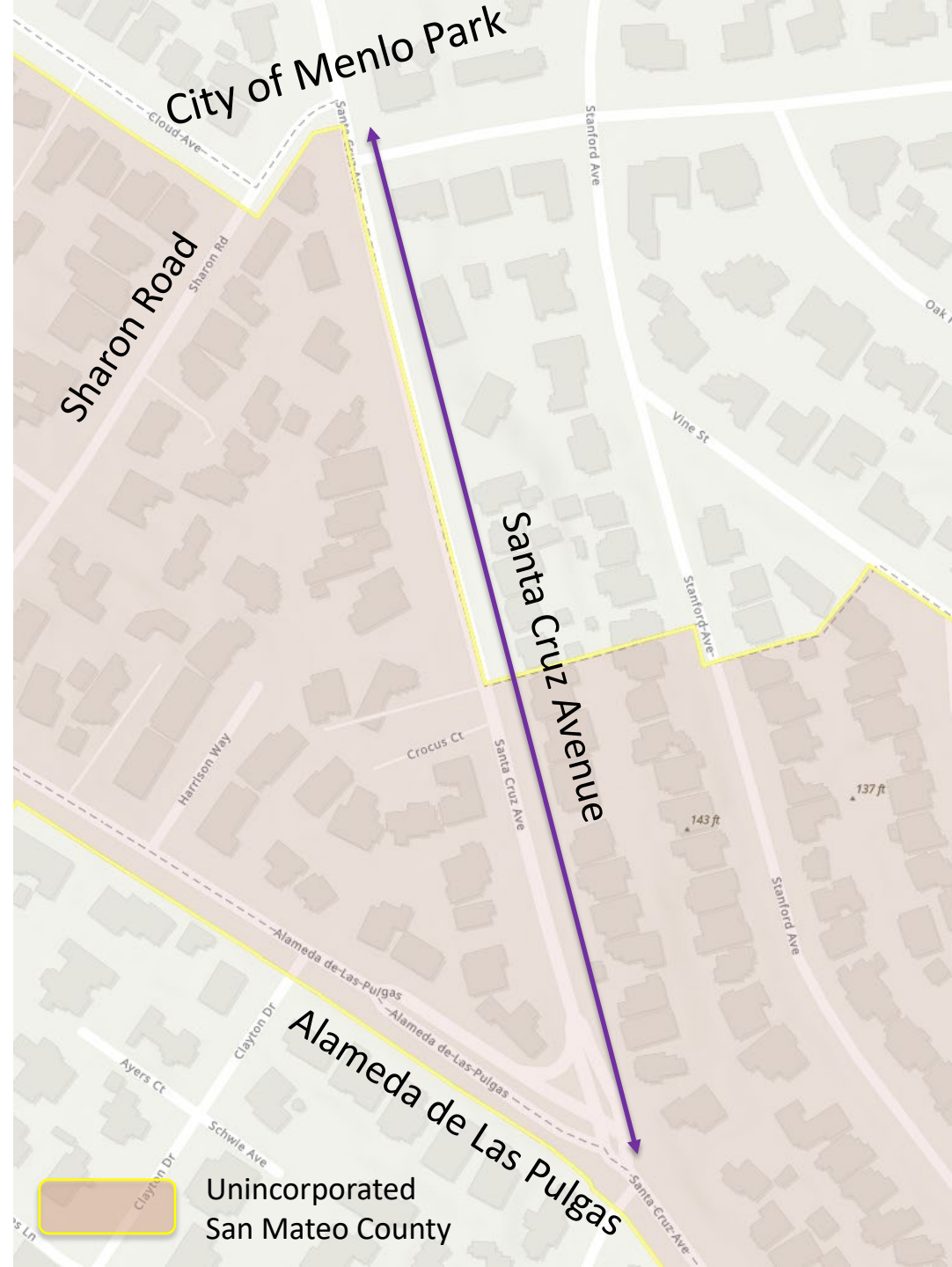


## Santa Cruz Avenue:

- Existing speed limit of 30 MPH
- Primarily residential
- Meets definition of a Local Street

## Recommendation:

- Establish speed limit of 25 MPH

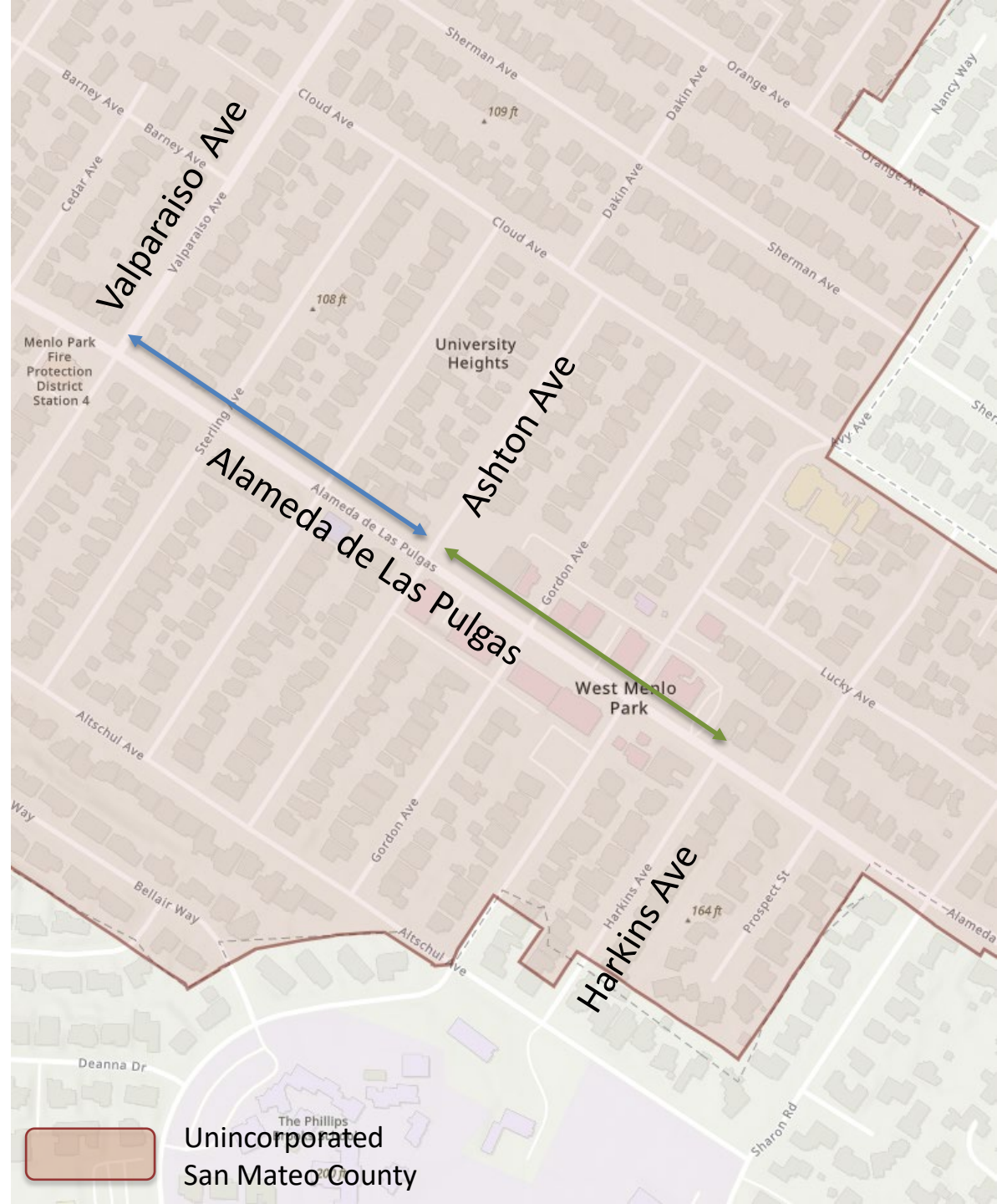


## Alameda de las Pulgas:

- Existing speed limit of 30 MPH
- Ashton to Harkins meets definition of a Business District
- Valparaiso to Ashton meets definition of a Residential District
- 85<sup>th</sup> %ile speed 32 MPH

## Recommendation:

- Establish speed limit of 25 MPH



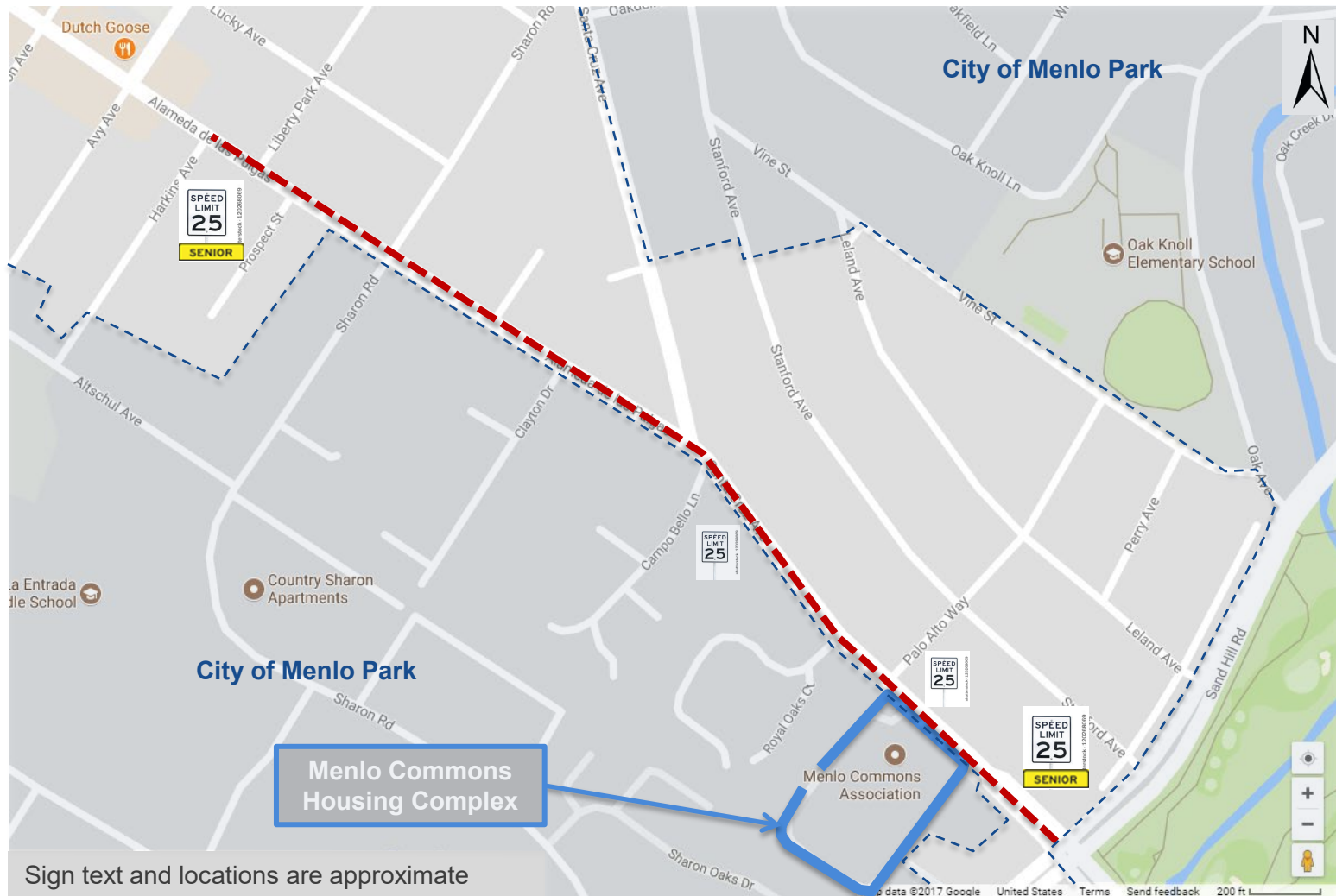
# Recommendation

## Introduce an ordinance:

- Amending Sections 7.04.025 (Speed limit twenty-five miles per hour) and 7.04.030 (Speed limit thirty miles per hour) of Chapter 7.04 (Prima Facie Speed Limits) of the San Mateo County Ordinance Code **to establish a speed limit of 25 miles per hour on the below-designated street segments**, and waive the reading of the ordinance in its entirety:
  - A) **On Santa Cruz Avenue between Alameda de las Pulgas and the corporate limits of the City of Menlo Park; and**
  - B) **On Alameda de las Pulgas between Valparaiso Avenue and Harkins Avenue**



# Santa Cruz Avenue – Senior Zone



# 85<sup>th</sup> Percentile Speeds along Santa Cruz Avenue b/w ADLP & Sand Hill Road

Date	85 <sup>th</sup> Percentile Speed	Volume (ADT)
Mar 2016	37.5	19,679
<b>2017 – 25 MPH Senior Zone Implemented</b>		
Jan 2018	37.0	20,375
Jan 2019	34.0	19,185
<b>July 2019 – Lane Configuration Changes</b>		
Sept 2019	34.5	18,961
Dec 2019	35	19,950

# Santa Cruz Avenue – Before



# Santa Cruz Avenue – After



**Thank You!**

COUNTY OF SAN MATEO



*Questions?*

COUNTY OF SAN MATEO



COUNTY OF SAN MATEO



# School Zone Reduced Speed Study - Schedule

- |                                            |                       |
|--------------------------------------------|-----------------------|
| 1. Project Initiation                      | May 2025              |
| 2. Existing Conditions – School Zones      | May - Sept 2025       |
| 3. Existing Conditions – Non-School Zones  | May – Sept 2025       |
| 4. Speed Limit Criteria and Prioritization | July 2025 – Oct 2025  |
| 5. Admin Draft, Draft Speed Limit Study    | Nov 2025 – Feb 2026   |
| 6. AB413 Daylighting Decision Matrix       | May 2025 – Sept 2025  |
| 7. Safety Corridor Analysis                | Jan 2026 – April 2026 |
| 8. Pilot Program Farallone View Elementary | Spring 2026           |



COUNTY OF SAN MATEO

