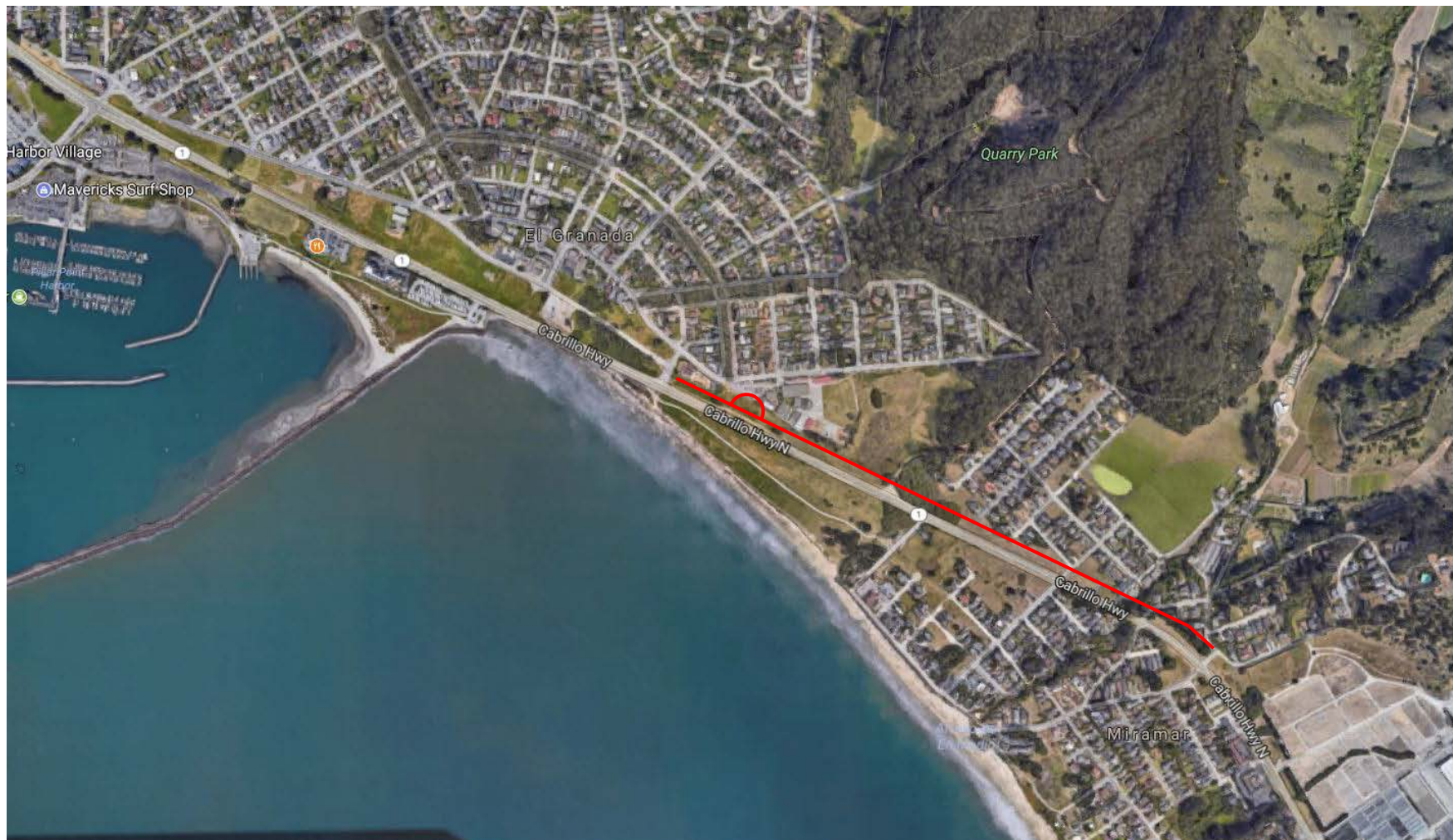


# Midcoast Multimodal/Parallel Trail

## County of San Mateo

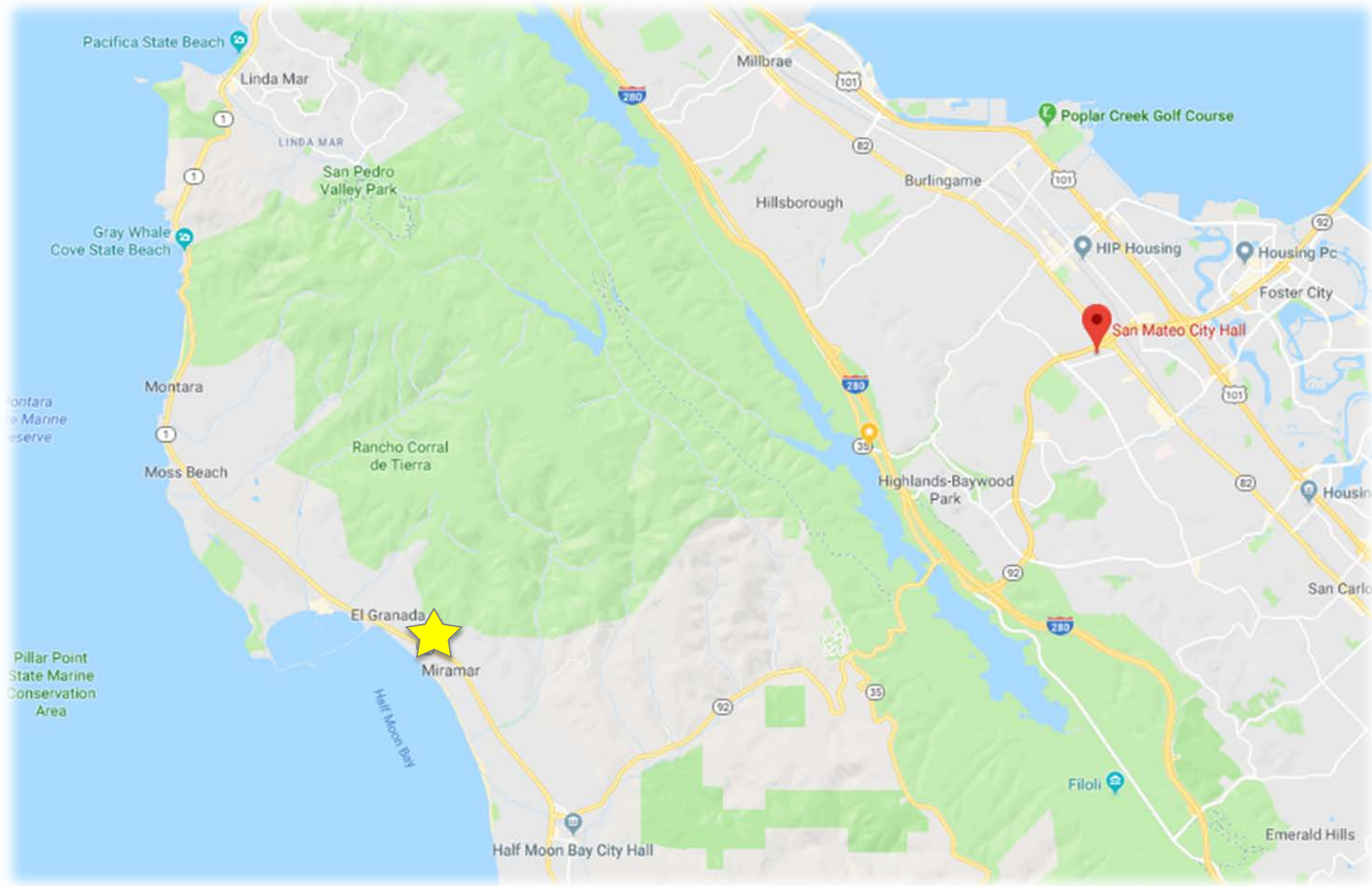


June 20, 2019

# Purpose of Presentation

- Project Description
- Regional Trail Connections
- Project Need and Community Support
- Request Letter of Support from BPAC for the C/CAG Article 3 TDA grant application





# COUNTY OF SAN MATEO





**Proposed Project**

— Multimodal Parallel Trail

**Jurisdictional Boundaries**

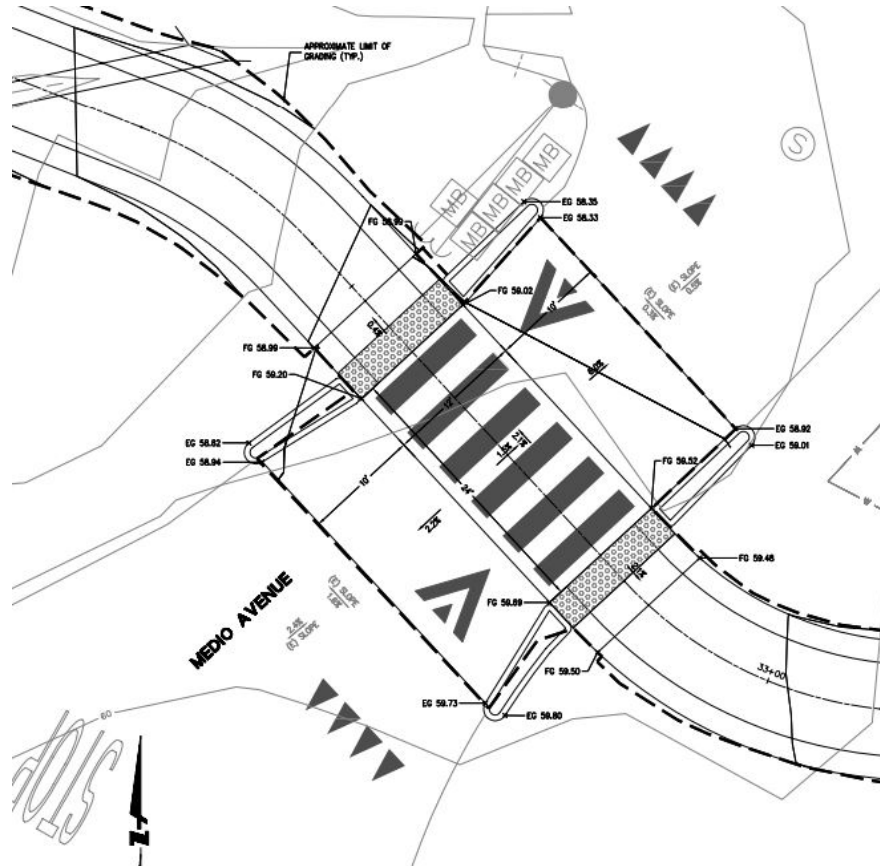
--- Unincorporated San Mateo County Border

□ San Mateo County Border

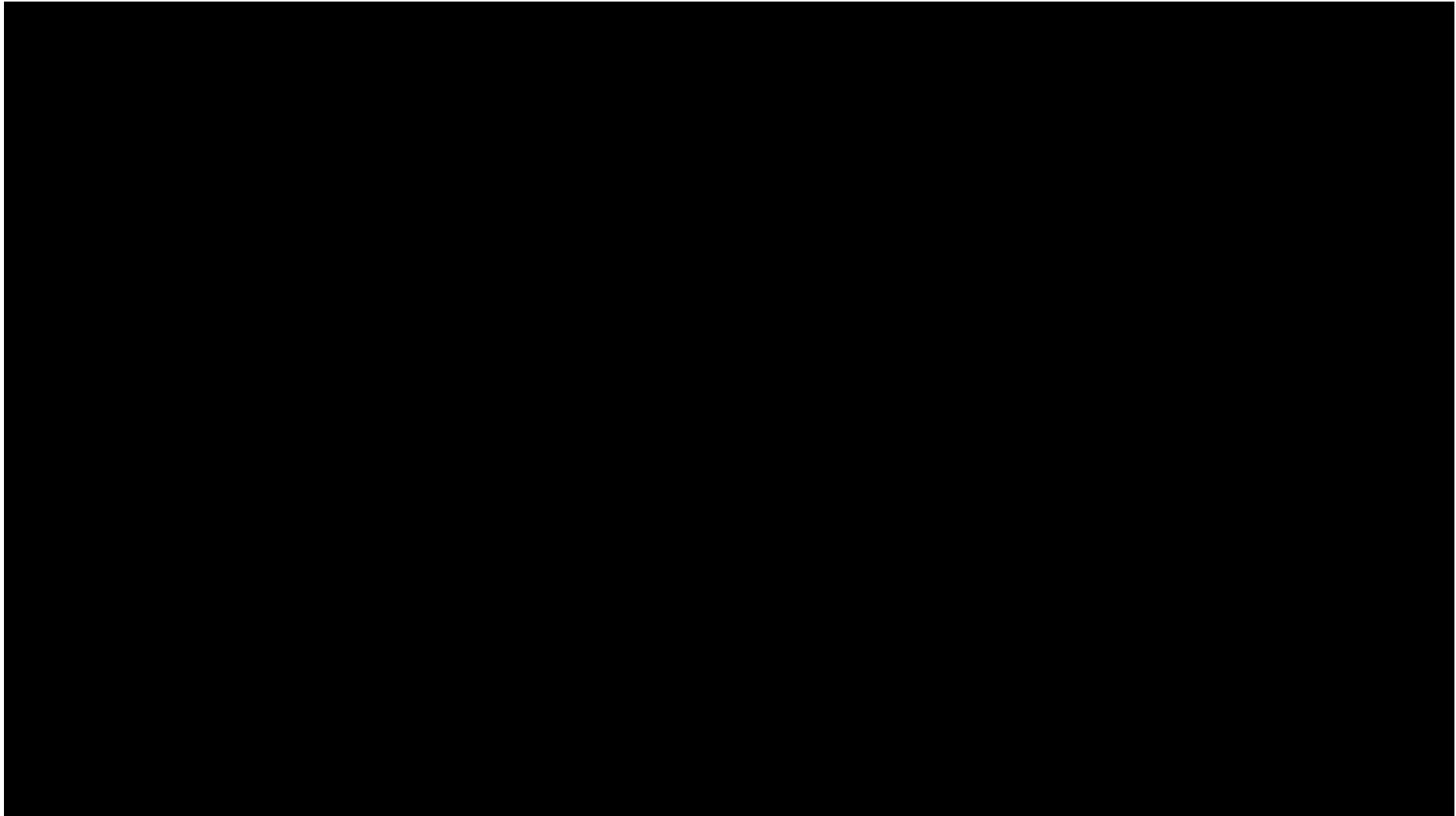


Multimodal Parallel Trail  
Location Map

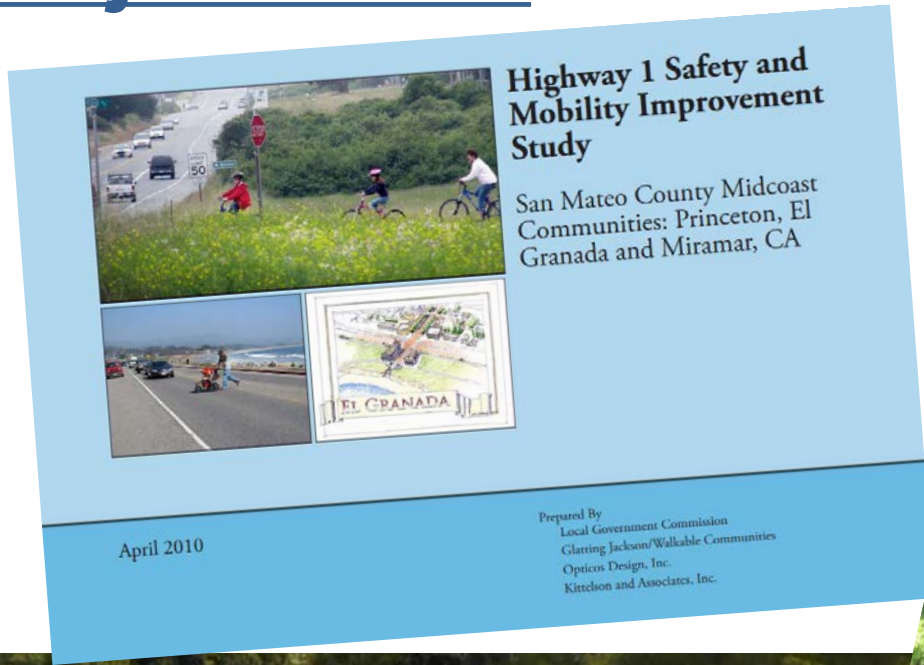
# Project Design Elements



# Regional Trail Connections



# Project Need

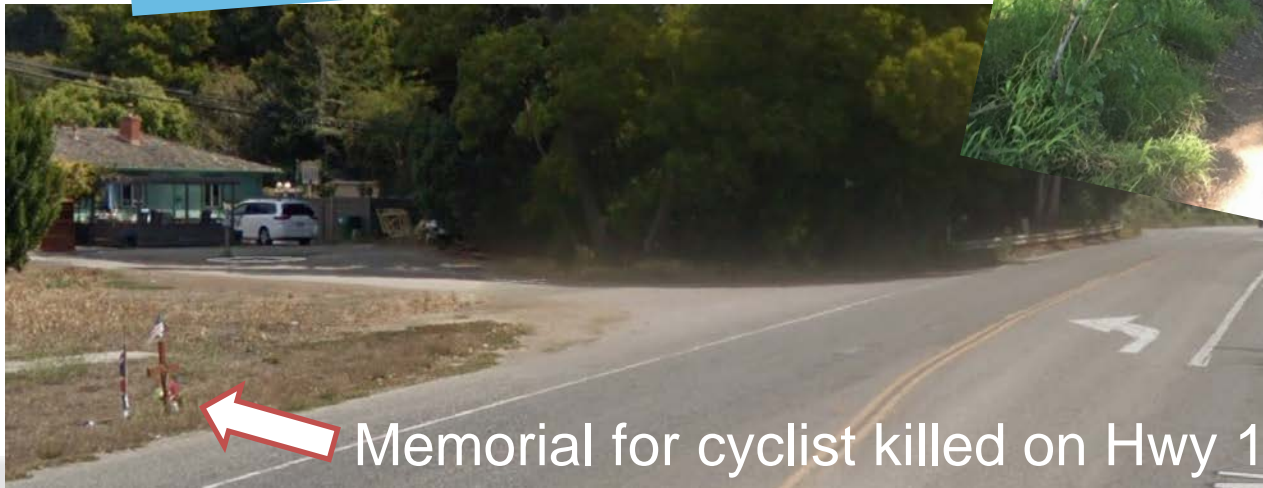


**Highway 1 Safety and Mobility Improvement Study**

San Mateo County Midcoast Communities: Princeton, El Granada and Miramar, CA

April 2010

Prepared By  
Local Government Commission  
Glattig Jackson/Walkable Communities  
Opticos Design, Inc.  
Kittelson and Associates, Inc.



← Memorial for cyclist killed on Hwy 1



# Community Support Received to Date



# Anticipated Community Support



**San Mateo County Bicycle  
& Pedestrian Committee**



**Parent Teacher  
Organizations  
(PTO)**



# Questions?

**COUNTY** OF **SAN MATEO**



Elizabeth Dallman  
Office of Supervisor Don Horsley  
[edallman@smcgov.org](mailto:edallman@smcgov.org)