

COUNTY OF SAN MATEO



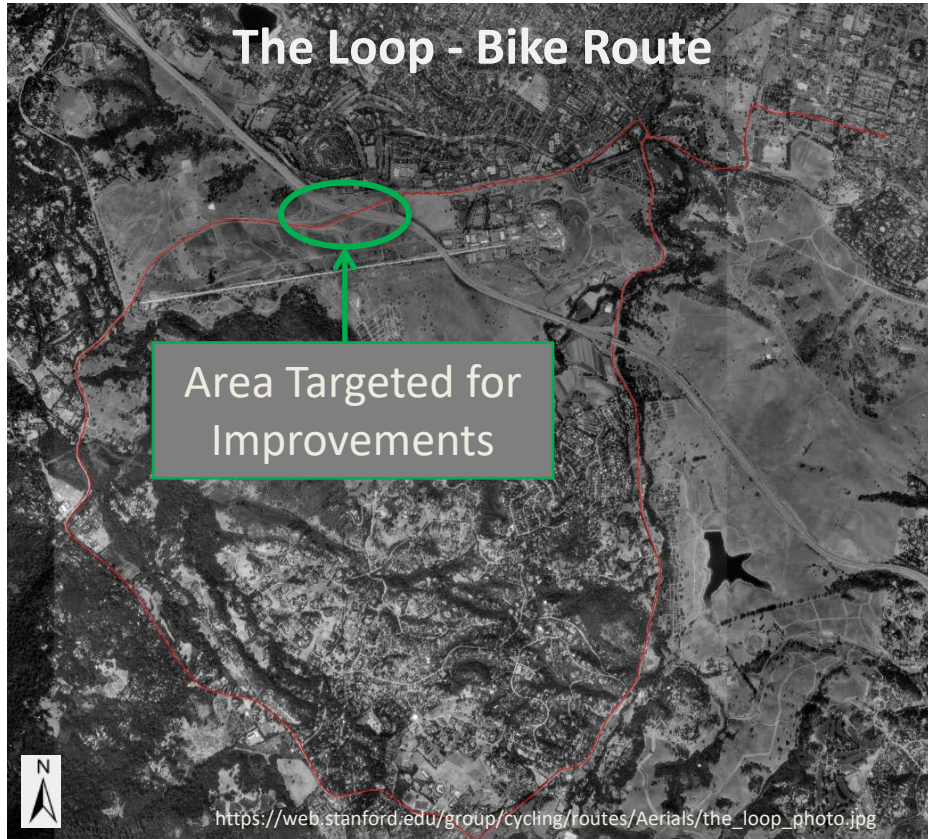
Sand Hill Road Bicycle Access Improvements

Joe LoCoco

February 16, 2016



How Many Bicyclists are Affected?



- “The Loop” is a popular route for cyclists
- This route can be found on:
 - mapmyrides.com
 - ridewithgps.com
 - Stanford.edu
 - bayarearides.com
 - and many other popular bicycling sites

From <http://bayarearides.com/rides/theloop/> -

“It's also worth noting that the ride passes through two **freeway interchanges** (both of them with I-280) where you have to ride in a bike lane that's in between traffic lanes as other vehicles try to merge in and out around you. If you're the kind of rider who feels uncomfortable riding in traffic, this might be an important point to consider.”

How Did We Get Here?



- San Mateo County Department of Public Works has been working with various community bicycling organizations to increase vehicle and bike safety along the Sand Hill at the 280 crossing.



- Supervisor Don Horsley has committed \$120,000 towards funding these improvements.

Areas of Concern

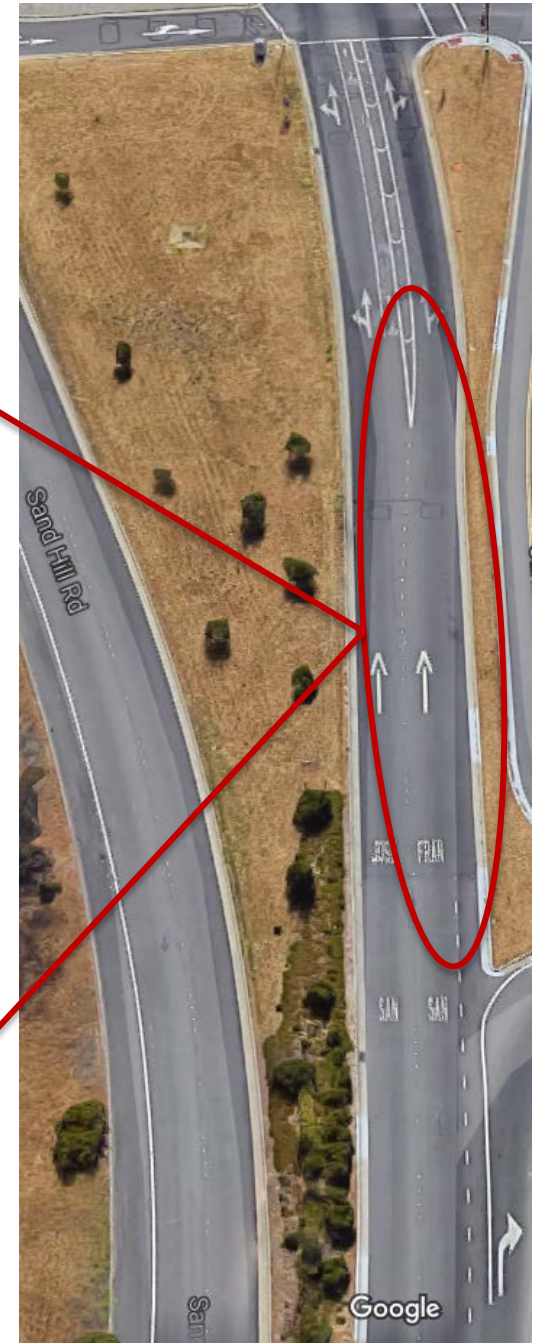


A – Right to center bike lane crossover at approach to 280N on-ramp

B – Narrow center bike lane on overpass

C – 280S off-ramp crosses unmarked bike lane

A – Right to center bike lane crossover at approach to 280N on-ramp



B – Narrow center bike lane on overpass



Area C – 280S off-ramp crosses unmarked bike lane



Improvements Contemplated

WB Sand Hill Road - 280 interchange

Priority levels 1 to 3 for available funds



Where Do We Go From Here?

- Department of Public Works:
 - is seeking BPAC support or alternative recommendations
 - will work with Caltrans regarding the implementation of green bike lanes across the 280 overpass

Questions or Comments?



COUNTY OF SAN MATEO

