



**COUNTY OF SAN DIEGO**  
**PLANNING AND BUILDING**

**NOTICE OF COASTSIDE DESIGN REVIEW**

Project Name: [Illegible]  
Address: [Illegible]  
Date: [Illegible]

1. Project Description: [Illegible]  
2. Project Location: [Illegible]  
3. Project Impact: [Illegible]  
4. Project Mitigation: [Illegible]

5. Project Contact: [Illegible]

6. Project Status: [Illegible]

7. Project Comments: [Illegible]

8. Project Signatures: [Illegible]

9. Project Date: [Illegible]

10. Project Location: [Illegible]



513

515

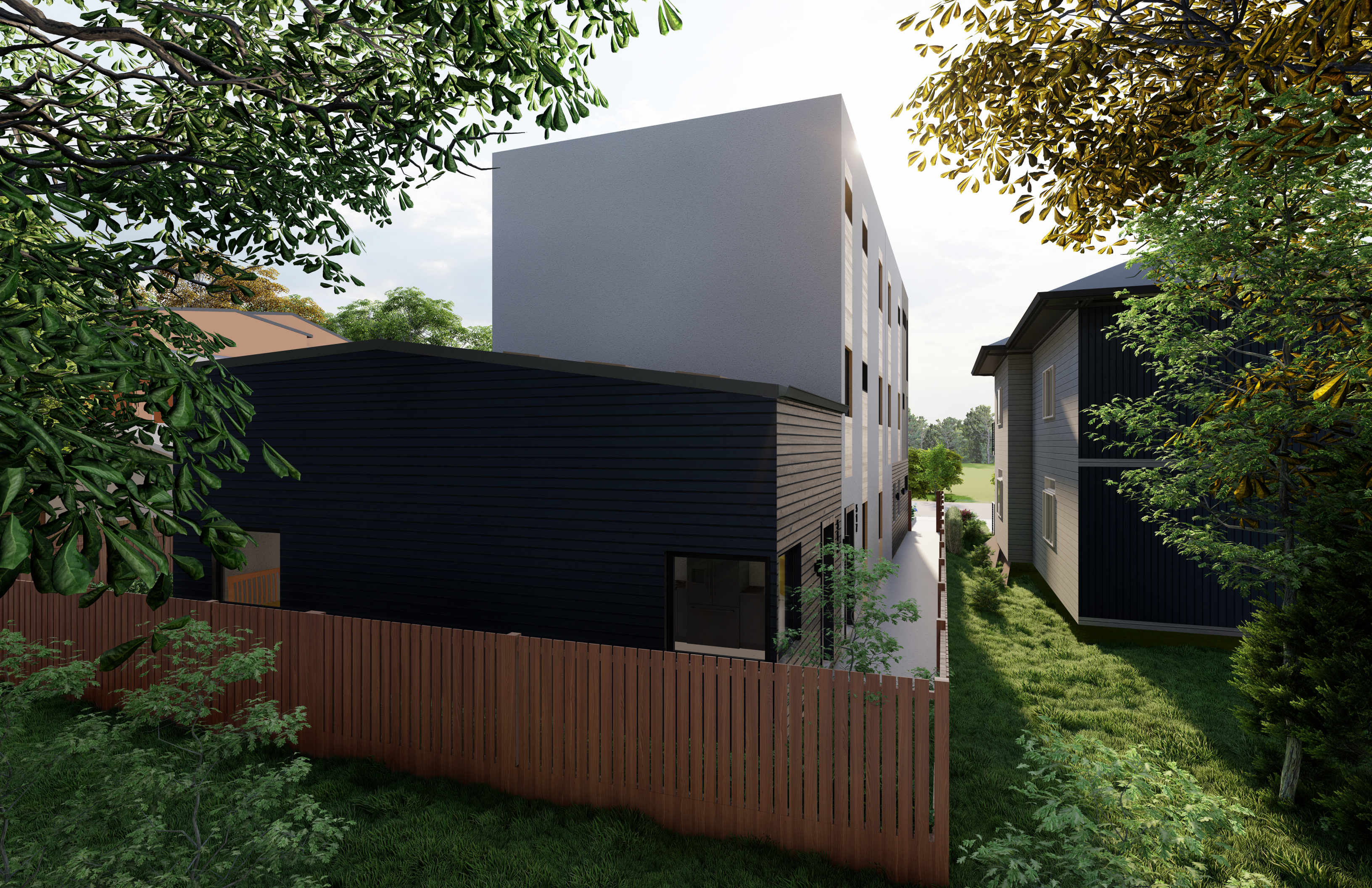




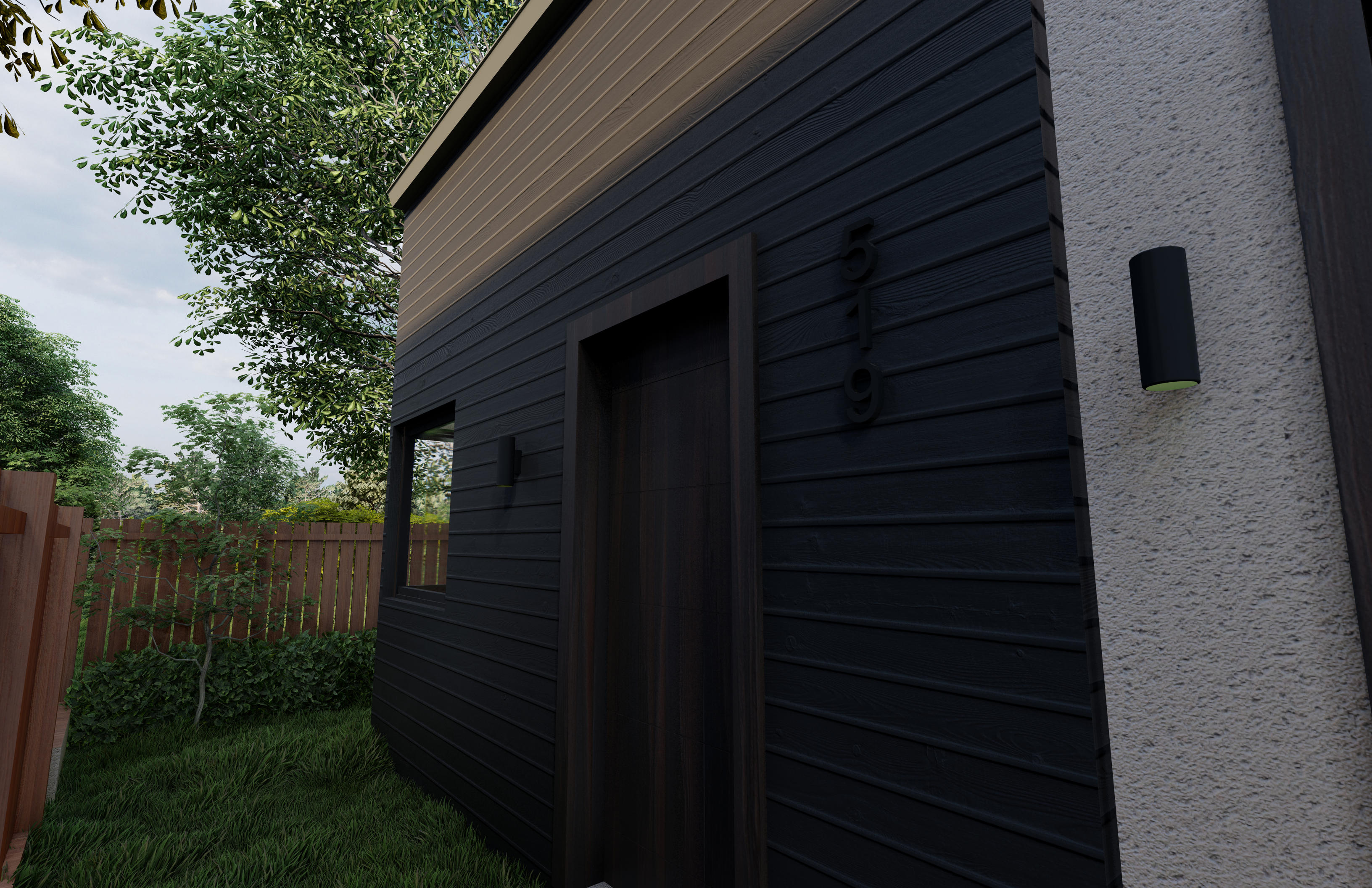
The left unit of the townhome features a two-story facade with dark grey vertical wood-grain siding. On the second floor, there is a large window with a balcony enclosed by a grey metal railing. On the first floor, there is a glass-paned entrance door and a smaller window to its right. A balcony with a grey metal railing is located below the first-floor entrance. The unit is situated on the left side of the building, adjacent to a neighboring house with dark grey siding.

The right unit of the townhome features a two-story facade with a light cream-colored stucco finish. On the second floor, there is a large window with a balcony enclosed by a grey metal railing. On the first floor, there is a glass-paned entrance door and a smaller window to its left. A balcony with a grey metal railing is located below the first-floor entrance. The unit is situated on the right side of the building, adjacent to a neighboring house with white siding and a wooden fence.

The ground floor of the townhome features dark grey horizontal siding. It includes two garage doors with light-colored panels and dark grey frames. The left garage door has the number '3' above it, and the right garage door has the number '5' above it. The entrance doors for both units are glass-paned and located between the garage doors. The ground floor is flanked by potted plants with purple flowers. The building is surrounded by lush green trees and a clear blue sky with light clouds.







519



