

Open for Exploration™

# San Mateo County Libraries

Anne-Marie Despain  
Director of Library Services

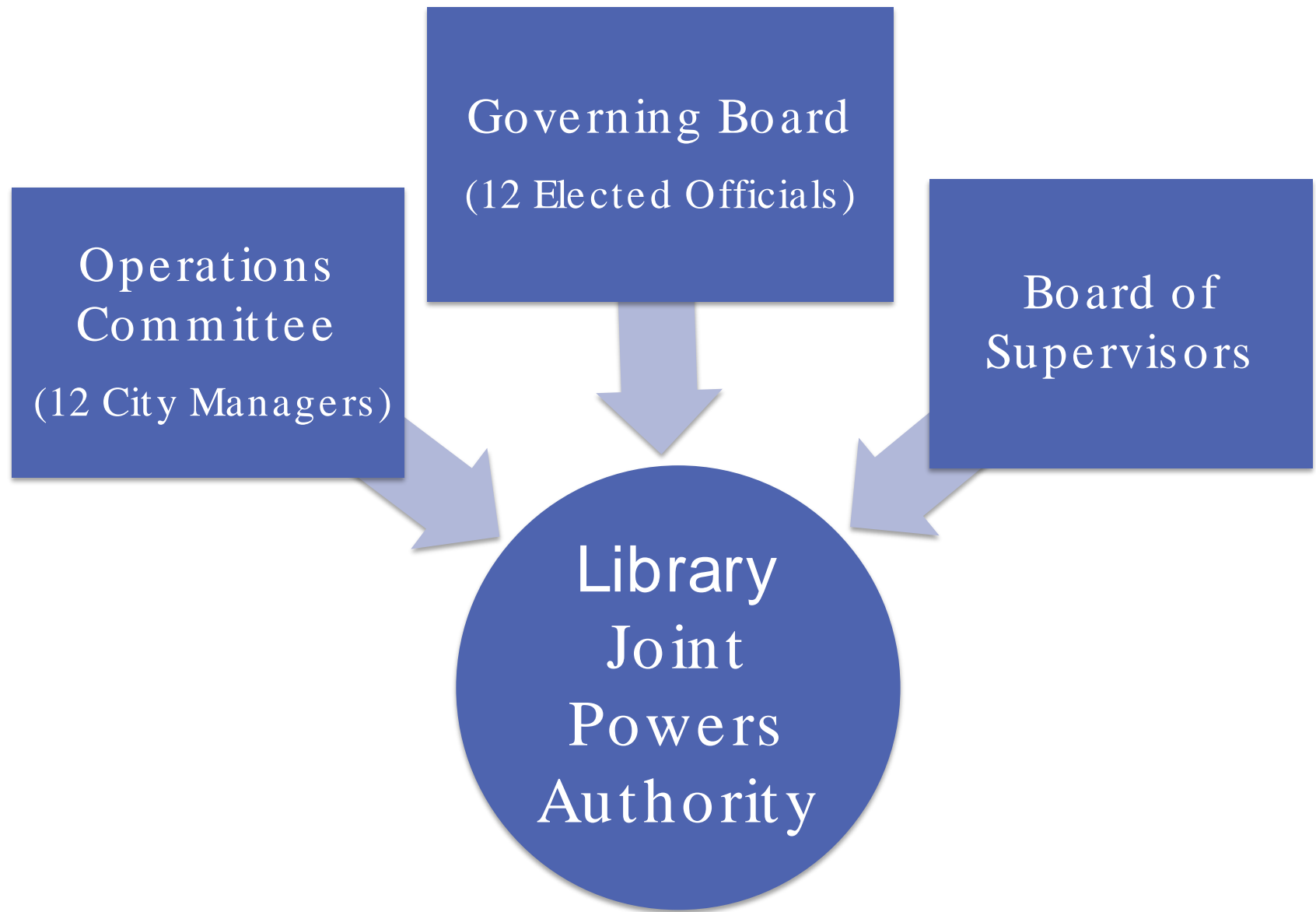


San Mateo  
County  
Libraries

Established in 1912



San Mateo  
County  
Libraries

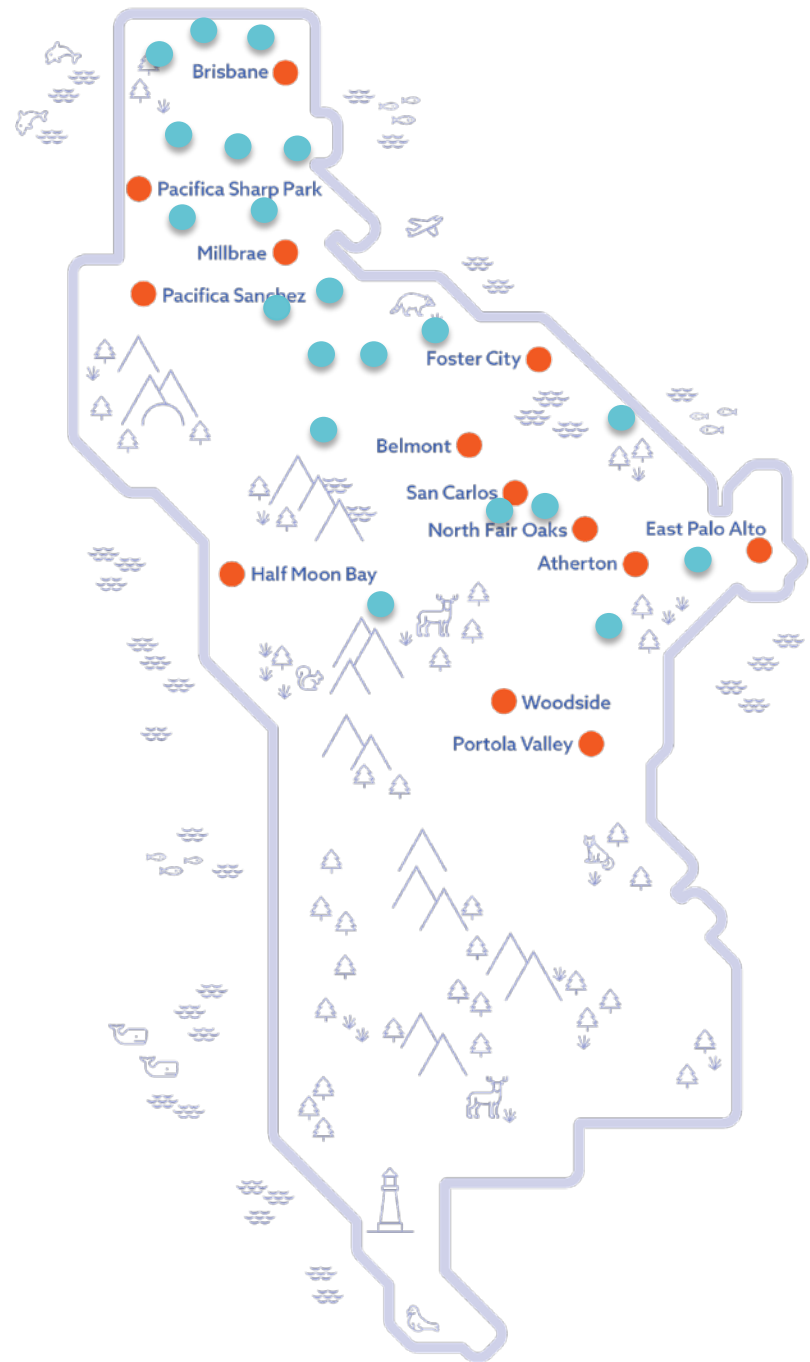


- Atherton
- Belmont
- Brisbane
- East Palo Alto
- Foster City
- Half Moon Bay
- Millbrae
- North Fair Oaks
- Pacifica Sanchez
- Pacifica Sharp Park
- Portola Valley
- San Carlos
- Woodside



## A total of 33 libraries in the San Mateo County

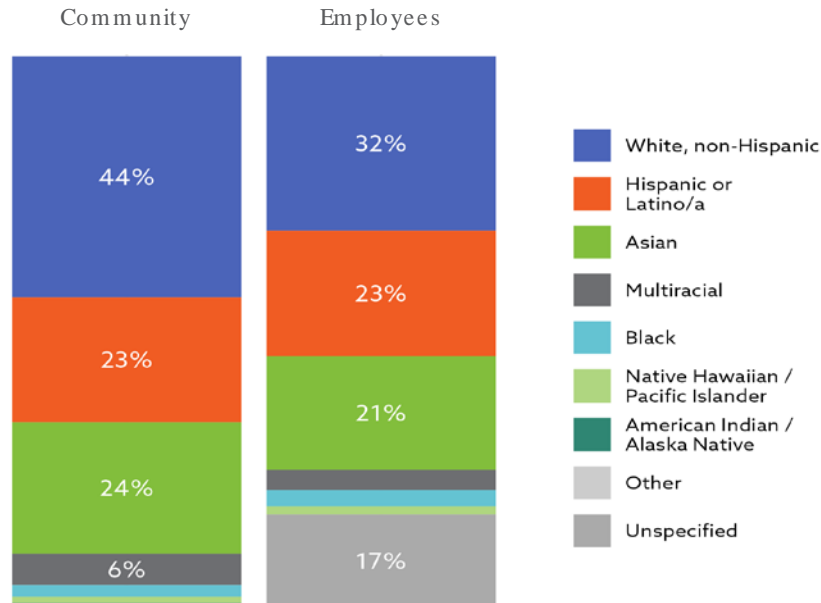
- Daly City (4)
- South San Francisco (2)
- San Bruno
- Burlingame (2)
- San Mateo (3)
- Redwood City (3)
- Menlo Park (2)
- Community Colleges (3)



# Demographics

283,000 people live in our service area

74% of our service population have a library card



At home, 16% of our community speak Spanish, 8% speak Chinese and another 15% speak another language other than English

Households are 78% suburban, 15% urban and 7% rural

25% are enrolled in school, 45% of whom are in grades k-8





# Strategic Plan

## Vision

San Mateo County Libraries ignite growth through transformative experiences

## Mission

San Mateo County Libraries strengthen our community by creating an inclusive sense of place and environment for learning



# Our Goals

We cultivate an active presence and create spaces that support discovery, enrich lives and uplift the community

We are leaders in establishing a foundation of early literacy and supporting exploration and growth at every stage of life

We understand needs and promote meaningful library services as solutions

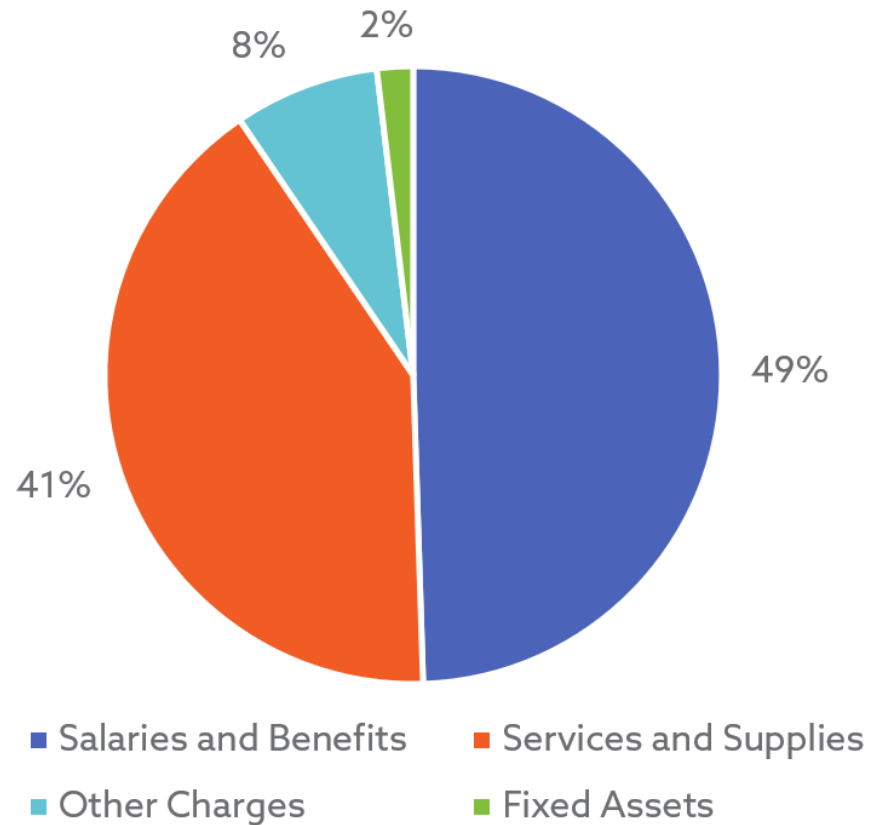
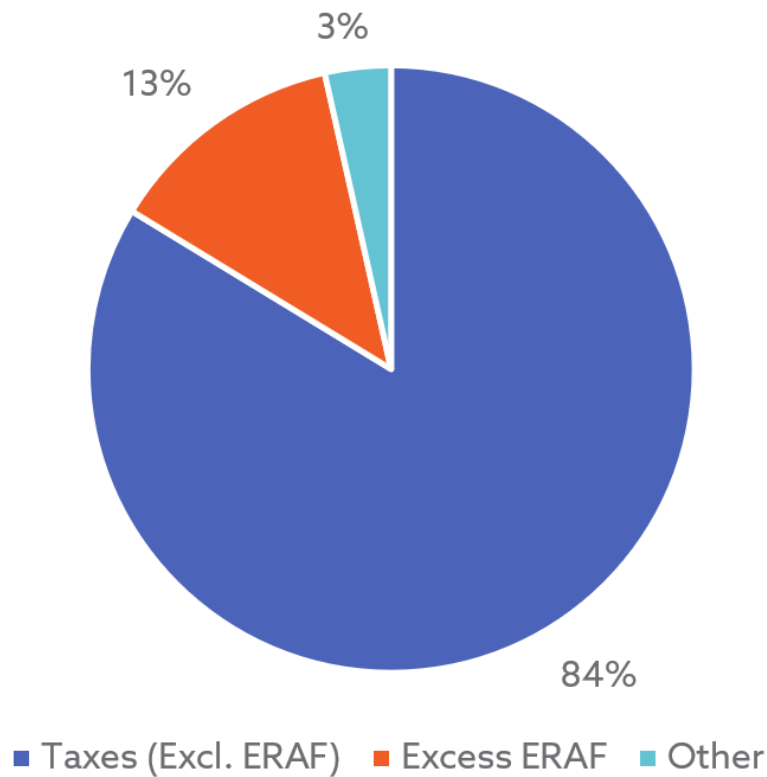


# Open for Exploration





# Revenues and Expenditures





# Library Champions



A total of **146** permanent staff, **100+** extra-help employees, and **200** summer interns provide library services.

**400+** volunteers, **10** Friends of the Library groups, and **2** Foundations support our libraries and programs.



# Year in Numbers

1st

In California Star  
Library Ratings

3rd

In National Star  
Library Ratings

96%

Favorability  
Rating

2M

Items  
Circulated

1.67M

Website  
Visitors

4.1M

Wireless  
Sessions

2,348

Programs  
and Events

935,621

In-Person  
Visits

32,356

Meals  
Served



San Mateo  
County  
Libraries

# Expanded Hours



# Vital Support

“An excellent and valued community resource that has proved of even greater value during these strained times for me and my family.  
Thank you.”  
—Library Patron





# Community Meals





# Family Learning



"The library has been the most important part of my kids' education ."  
—Library Patron

# Student Support





# Inspiring Summers









# Impactful Programs



"The session was inspiring, heartwarming and the stories filled me with pride of my immigrant and farmworker family who came here in the 80s from Cuernavaca, Mexico."

—Attendee of Equity Through Art



# Innovative Services

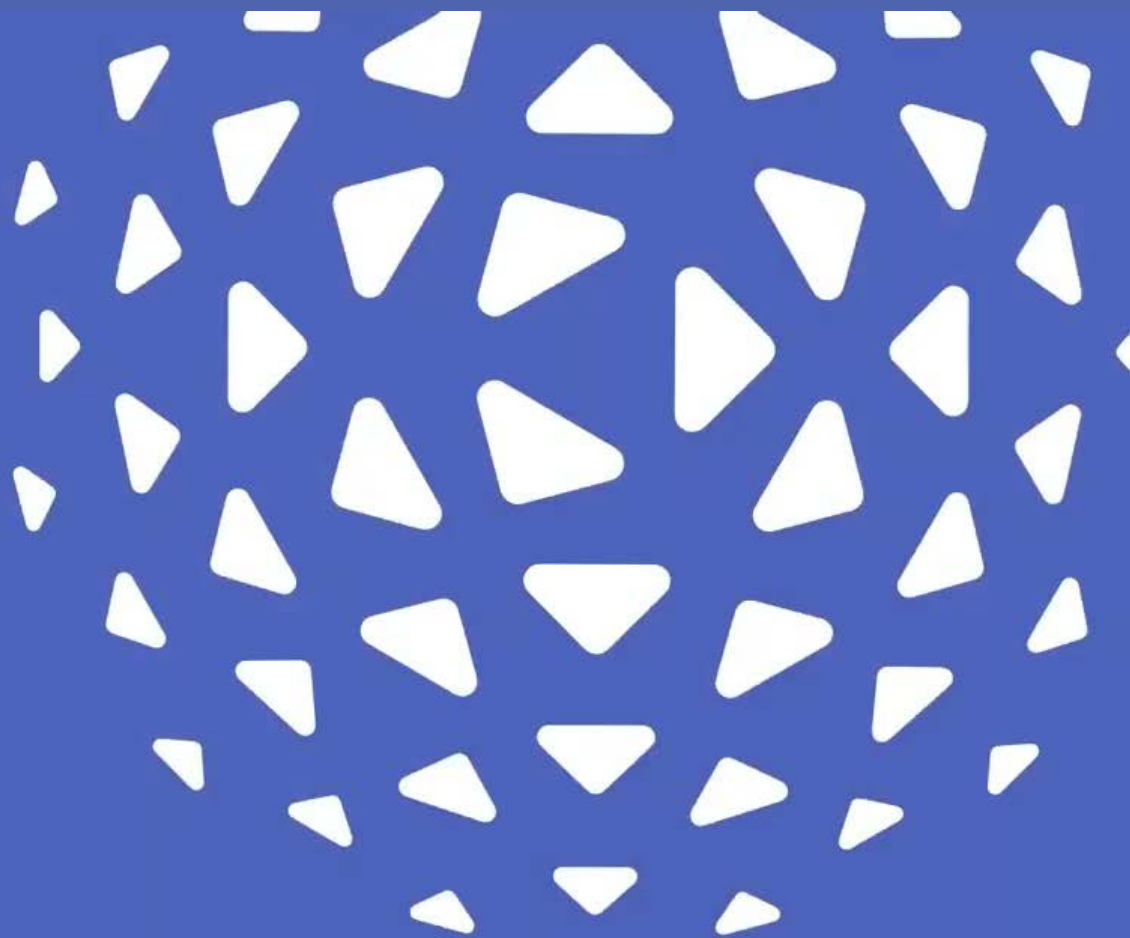
# Technology Access





# Everyone A Maker







# Inspiring Spaces





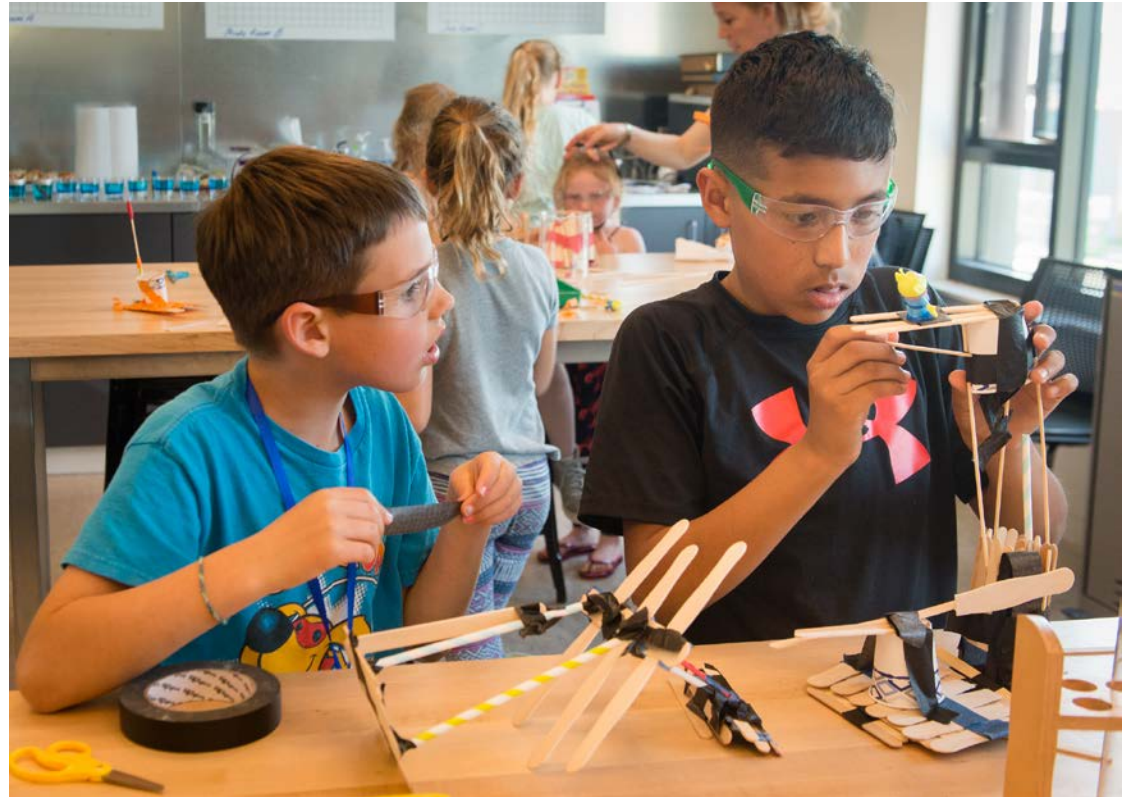
# Inspiring Spaces

"The libraries are  
light and bright  
and wonderful  
spaces for adults  
and children!"  
—Library Patron



# Priorities and projects

- Intentional Outreach
- Increase Digital Equity
- Sustainable Practices
- Apply Equity Lens
- Build Literacy Skills



# Priorities and projects



- New Makerspaces
- Enhance Collections
- Mental Health Supports
- Lending Outposts
- New Bookmobile



# Looking forward



Open for Exploration™

# Thank you!

Anne-Marie Despain  
Director of Library Services  
[despain@smcl.org](mailto:despain@smcl.org)  
[smcl.org](http://smcl.org)



San Mateo  
County  
Libraries