



CIVICS 101

Ann M. Stillman
Director of Public Works
September 27, 2022

COUNTY OF SAN MATEO



Department of Public Works

About Us



**WHO WE ARE
& WHAT WE DO**

COUNTY OF **SAN MATEO**



Department of Public Works

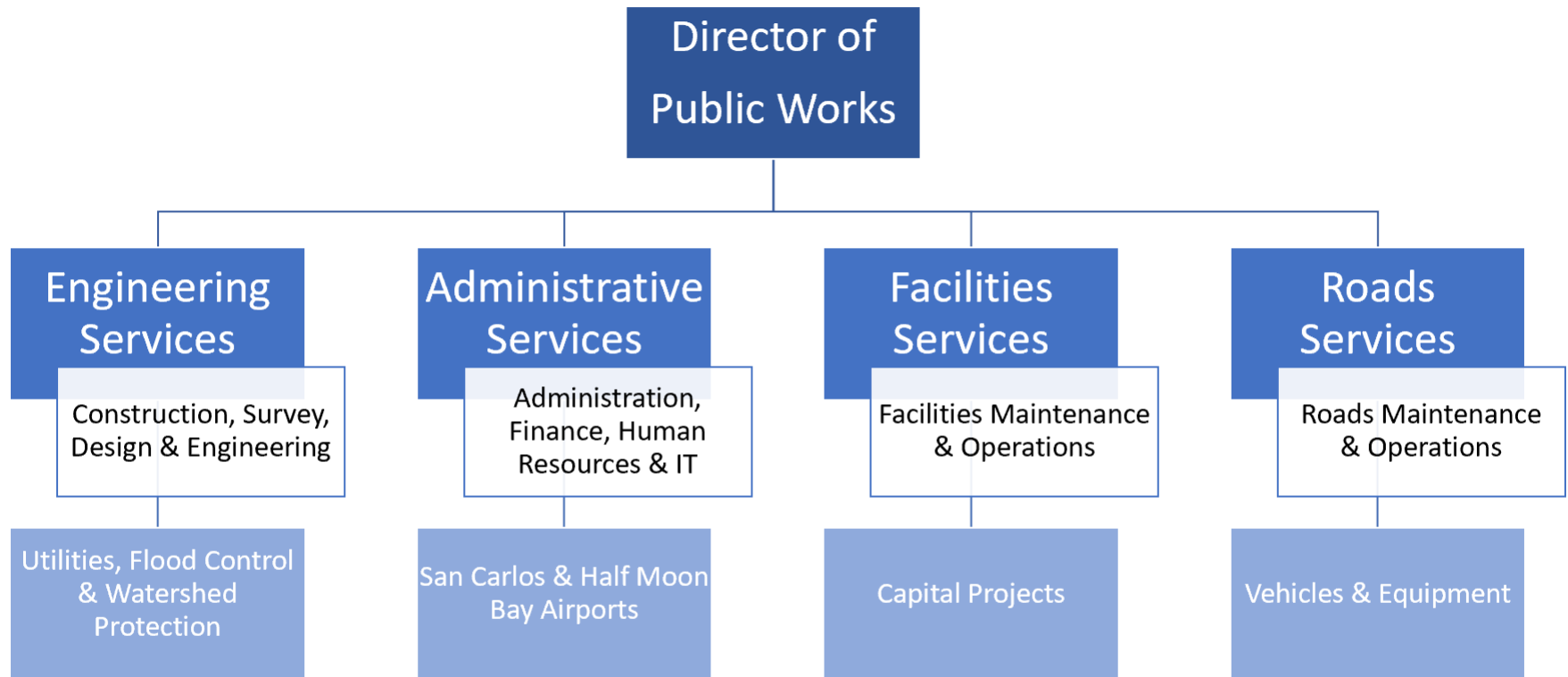
Mission Statement

The Department of Public Works (DPW) plans, designs, constructs, operates and maintains facilities and equipment that are safe and accessible to the general public and County employees.



Department of Public Works

Organizational Chart





Department of Public Works

CARE for Customers & Employees



COUNTY OF **SAN MATEO**





Department of Public Works

DPW Employees



For current DPW job opportunities, please visit: www.jobs.smcgov.org

COUNTY OF SAN MATEO

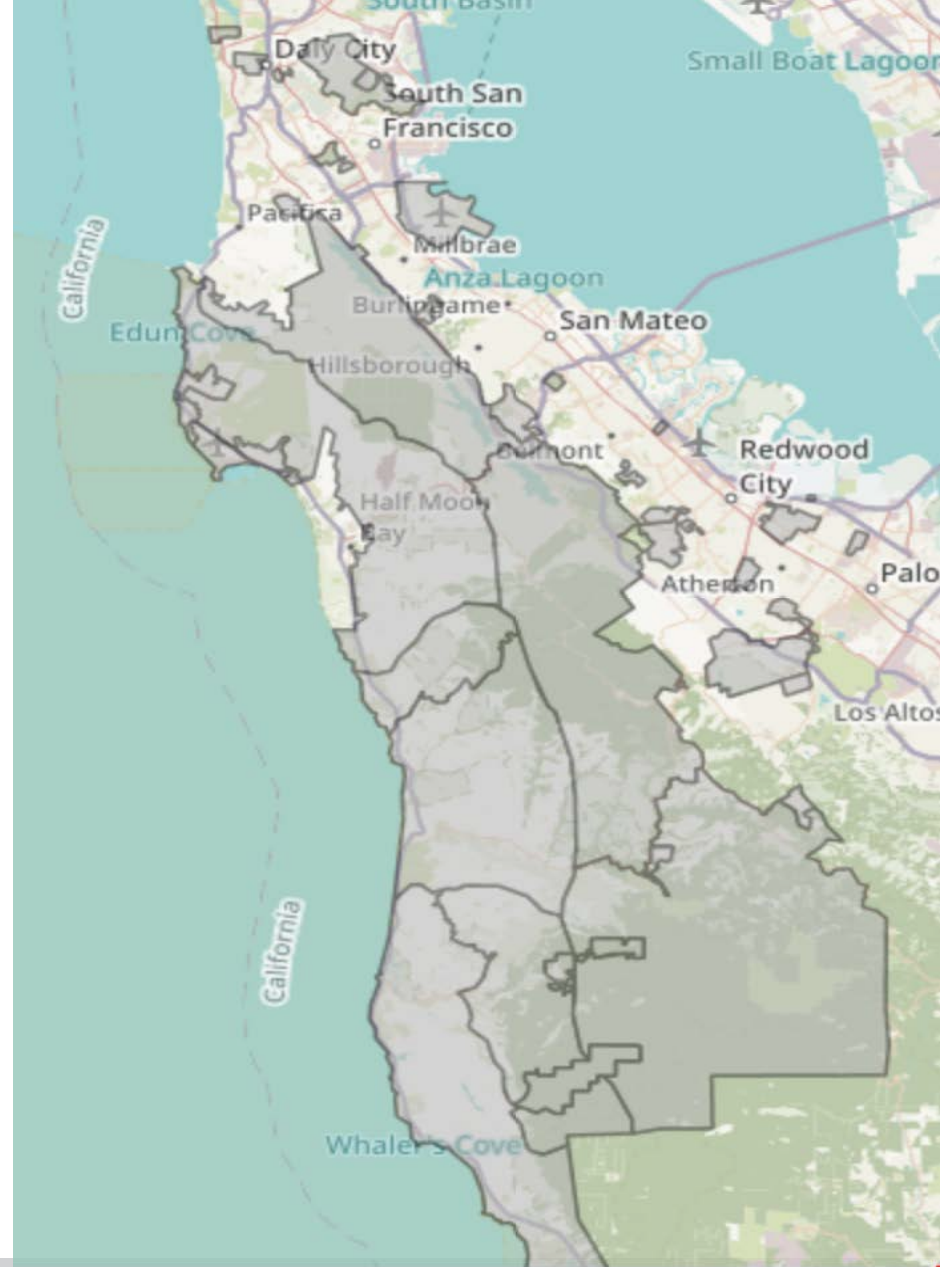


Department of Public Works

County of San Mateo

Unincorporated Areas

- Broadmoor
- Burlingame Hills
- Devonshire
- El Granada
- Emerald Lake Hills
- Fair Oaks
- Highlands/Baywood Park
- La Honda
- Ladera
- Loma Mar
- Los Trancos
- Woods/Vista Verde
- Menlo Oaks
- Montara
- Moss Beach
- North Fair Oaks
- Palomar Park
- Pescadero
- Princeton
- San Gregorio
- South Coast/Skyline
- Sequoia Tract
- Skylonda
- Stanford Lands
- West Menlo Park



COUNTY OF SAN MATEO



Department of Public Works

Road Services

- 315 miles of County maintained roads
- Stormwater facilities
- Roadway vegetation maintenance
- Traffic control devices
- Right of way management
- Motorpool services
- Vehicle and equipment acquisition and replacement
- Vehicle and equipment preventative maintenance & repair



Department of Public Works

Road Services



Department of Public Works Road Services

DPW Assessment of Potential Uses and Benefits:

- Low noise levels
- Zero emissions
- Appropriate for some light-duty maintenance activities
- Reduced noise impact may allow DPW to conduct earlier/later roadside vegetation maintenance





Department of Public Works **Road Services**

Storm Preparation & Recovery



COUNTY OF SAN MATEO





Department of Public Works Engineering & Resource Protection Services

- Project Development
- Design and Construction Management
- County Surveyor/Maps
- Flood Control, Utilities, and Watershed Protection





Department of Public Works

Engineering & Resource Protection Services



CEQA clearance & biological monitoring
for routine & emergency sediment
removal



LED streetlights can reduce energy costs
and CO2 emissions by 60%



Department of Public Works

Facilities Services & Capital Projects

FM&O (Facilities, Maintenance and Operations)

- 3,095,070 square feet of facilities
- 40+ acres of landscape & parking areas

Building Services

- 73 County facilities
- 1,767,000 square feet of facilities

Correctional Facilities

- Maguire & Maple Street Correctional Facilities

Health & Hospital

- 562,019 square feet of medical facilities

Construction Services

- Professional crafts services beyond the scope of routine maintenance

Capital Projects

- County facilities maintenance, repair & replacement projects



Department of Public Works Facilities Services



COUNTY OF SAN MATEO





Department of Public Works

Capital Projects



Department of Public Works **Administrative Services**

- Accounting
- Airports
- Business Systems (IT)
- Clerical Support
- Human Resources
- Safety/Risk



Department of Public Works

San Carlos & Half Moon Bay Airports



Department of Public Works

Project Sampling



Department of Public Works

Middlefield Road Improvement Project



COUNTY OF SAN MATEO





Department of Public Works

Mirada Road Pedestrian Bridge Replacement

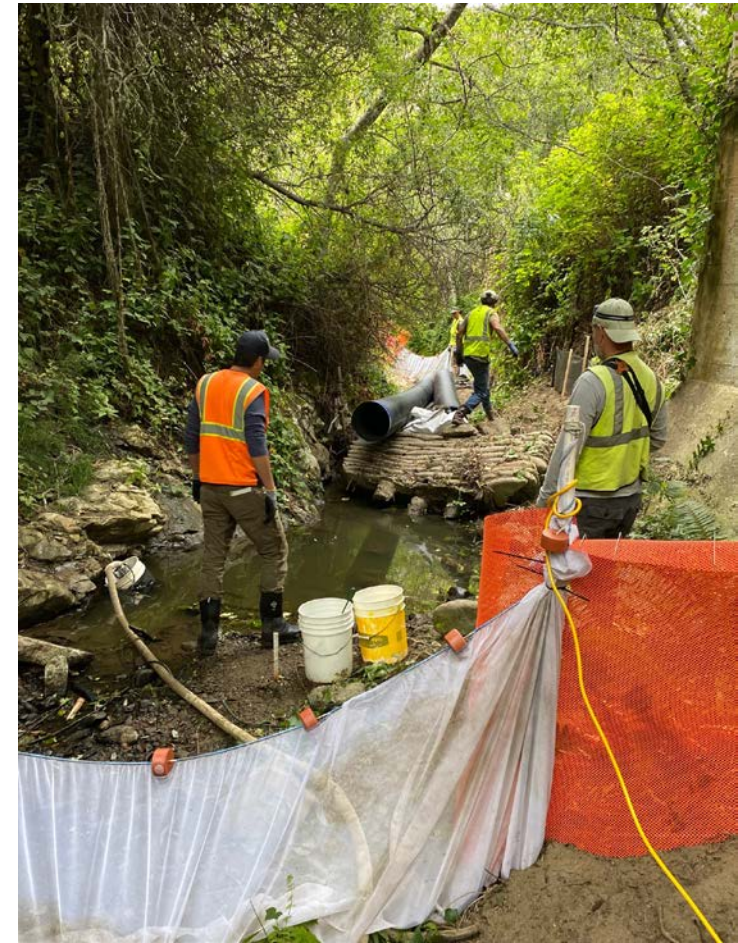


Closed in July 2020 due to the severe rusting and poor condition of the bridge



Department of Public Works

Higgins Canyon Road Bridge at Mills Creek Embankment and Wingwall Repairs Project



COUNTY OF SAN MATEO





Department of Public Works

Hall of Justice Air Handling Units



Department of Public Works

Additional Capital Projects In Progress

San Mateo Medical Center – 29 Projects including:

- Integrated Behavioral Health Therapy Room Redesign
- Prevent Self Harm and Ligature Project
- Humidity Control & Sterilization Project (Surgery Center)
- Install Nurse Call System
- Replace Smoke Detector and Fire Alarm Upgrades
- San Mateo Medical Center Component Replacement
- SMMC Pneumatic Tube System Upgrades

FCIS – 48 Projects Including:

- COB Roofing Repairs
- HOJ Traction Elevators 3 & 7
- Grant Yard Termite Damage Repairs
- Motor Pool Replace Asphalt Shingle Roof (Tower Road)(Dyno Structure)
- Maguire Correctional Facility Structural Steel Repairs
- Maguire Correctional Facility Replace Air Handler Unit & Fans

General Capital Improvements:

- San Pedro Park Structural and Exterior Façade Repairs
- Central Library Kitchen and Restroom Remodel
- Probation Lobby Improvements
- PDU Carpet and Paint Improvements
- San Carlos Airport Site Improvements (Replacement of concrete apron at hangar, removal and replacement of asphalt parking lot approx. 8,000SF including construction of new retaining wall at limit of parking area)

Strategic Energy Master Plan (SEMP) Program:

- Portable EV Charge Station Research
- Maple Street Correctional Center Solar Project
- County Wide Energy Evaluations/ Recommendations (Internal)

Other Projects:

- Midway Village Portable Classroom Replacement
- Regional Operations Center Security Upgrades
- Lathrop House Plaster Damage Repair
- East Palo Alto Government Center Water Quality Improvements
- Hotel renovations for people experiencing homelessness

Department of Public Works

Recently Completed Projects



**RECENTLY
COMPLETED
PROJECTS**



Department of Public Works

Coyote Point Eastern Promenade Project



Aerial view of the upper parking lots and beach



Features along the Promenade include decorative fencing, bicycle parking, benches & landscaped areas



Department of Public Works

Project Sampling



Loyola Avenue Sewer Pipe Replacement & Road Reconstruction



Butano Creek Channel Stabilization and Habitat Enhancement at Cloverdale Road Bridge



Department of Public Works

Parks Projects



Memorial Park Wastewater Treatment Plant Replacement



Memorial Park ADA Parking & Paving Project

Department of Public Works

Cost Measures



**LET'S TALK
ABOUT MONEY**

COUNTY OF **SAN MATEO**



Department of Public Works

Project Costs

Roads

- \$7,332 per mile to maintain a road
- \$59,176 per lane mile sealed
- \$415,128 per lane mile resurfaced
- \$1,367,360 per lane mile reconstructed

Sewer

- \$6,359 per mile of sewer main for scheduled maintenance

Vehicle

- \$2,832 per non-patrol vehicle maintenance
- \$5,343 per patrol vehicle maintenance

Department of Public Works

FY 21-23 Budget Overview

Department Budget	FY 2021-22	FY 2022-23
Total	\$246,286,706	\$266,702,021

Capital Projects Budget	FY 2021-22	FY 2022-23
Total	\$117,238,397	\$112,266,426

Department of Public Works



**DPW
WANTS YOU TO
KNOW...**

COUNTY OF **SAN MATEO**



Department of Public Works

Storm Preparation Tips



- Avoid piling yard waste on your property where it could wash into storm drains.
- Use a rake or broom to remove leaves and debris that may collect on the tops of storm drains & place the material in your yard waste container.



- Clean gutters & downspouts annually to ensure a well-flowing drainage system.
- Direct flows from downspouts away from your foundation, without discharging flows to adjacent properties.

Department of Public Works

Sandbag Stations



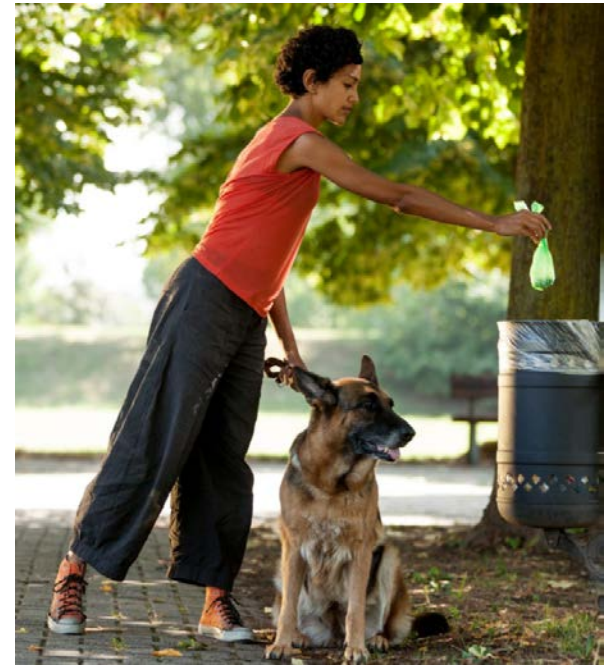
- DPW provides free sandbags to residents in unincorporated County areas to help protect property from flooding during the rainy season.
- Residents may pickup 15 pre-made sandbags & fill as many additional sandbags as needed.
- DPW's Sandbag Stations are located in Redwood City, Princeton, La Honda, & Pescadero.
- For more information, please visit: <https://www.smcgov.org/publicworks/sandbags>

Preventing Stormwater Pollution

Pet Care

Did you know that one gram of dog waste contains 23 million fecal bacteria?

Pet waste that doesn't get picked up can ultimately end up in our waterways.



Litter Prevention

Over time, small amounts of litter on our roads, sidewalks, and trails build up and contribute to a big water quality problem.



Whether at home, in your community, or place of work—there are many ways YOU can help prevent stormwater pollution!

For more information: <https://www.flowstobay.org/preventing-stormwater-pollution>

COUNTY OF **SAN MATEO**



Be
Sewer
Smart!

AVOID SEWER BACKUPS AND OVERFLOWS BY KEEPING TRASH OUT OF YOUR TOILET

Did you know?
Cleaning wipes, baby wipes and facial wipes are one of the biggest causes (or contributors) to sewer back-ups in the County of San Mateo Sewer Districts. That's right- even if the package says "flushable" or "disposable", they should NEVER be flushed. They belong in the trash.

Flush ONLY toilet paper. Put trash in the trash can.
For more information please visit our website at www.smcgov.org/sewers or call us at 650-363-4100.

Items shown causing clogs:
- Tampons, maxi pads & their applicators/wrappers
- Kitty litter
- Syringes
- Paper towels and shop towels
- Diapers
- Cotton swabs & makeup pads
- Dental Floss
- Plastics and food wrappers
- Condoms and their wrappers
- Hair
- Prescription and OTC medications



**The toilet is only meant
to flush the three P's—
pee, poop and paper.**
toilet



QUESTIONS?

Department of Public Works
website: www.smcgov.org/publicworks

COUNTY OF SAN MATEO

