

# Monkeypox & COVID-19

## Outbreak Response During a Pandemic

Marc Meulman

Director of Public Health, Policy & Planning



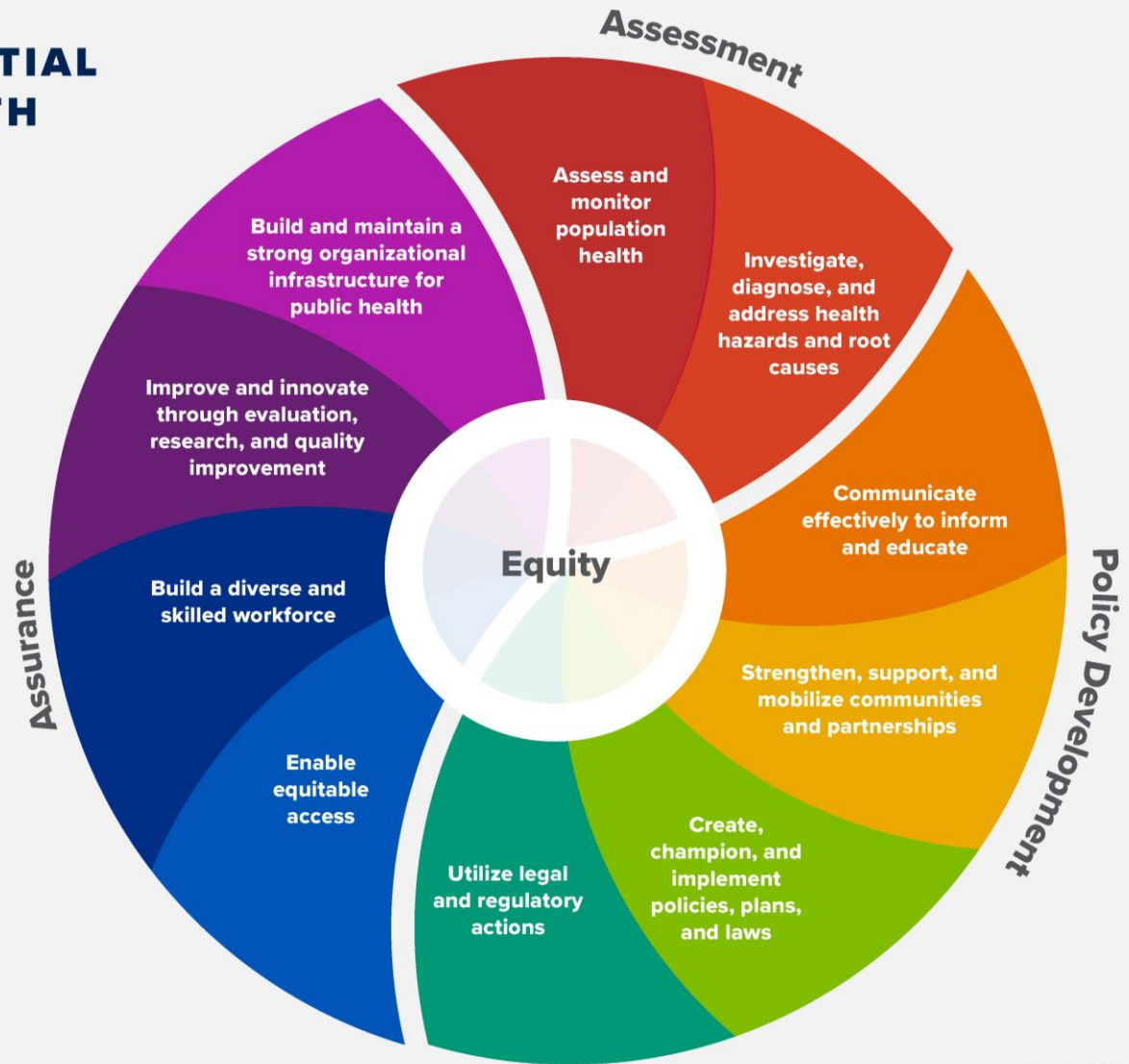
SAN MATEO COUNTY HEALTH

**PUBLIC HEALTH,  
POLICY & PLANNING**

# THE 10 ESSENTIAL PUBLIC HEALTH SERVICES

*To protect and promote the health of all people in all communities*

The 10 Essential Public Health Services provide a framework for public health to protect and promote the health of all people in all communities. To achieve optimal health for all, the Essential Public Health Services actively promote policies, systems, and services that enable good health and seek to remove obstacles and systemic and structural barriers, such as poverty, racism, gender discrimination, and other forms of oppression, that have resulted in health inequities. Everyone should have a fair and just opportunity to achieve good health and well-being.



Created 2020



**SAN MATEO COUNTY HEALTH**  
**PUBLIC HEALTH,  
POLICY & PLANNING**

## REPORTABLE DISEASES

- |  |  |  |
|--|--|--|
| <ul style="list-style-type: none"> <li><input type="checkbox"/> Amebiasis</li> <li><input type="radio"/> Anaplasmosis</li> <li><input type="radio"/> Anthrax, human or animal +</li> <li><input type="checkbox"/> Babesiosis</li> <li><input type="radio"/> Botulism: infant, foodborne, or wound</li> <li><input type="radio"/> Brucellosis, animal; except infections due to <i>Brucella canis</i> +</li> <li><input type="radio"/> Brucellosis, human +</li> <li><input type="checkbox"/> Campylobacteriosis</li> <li><input type="radio"/> Chancroid ■</li> <li><input type="radio"/> Chickenpox (Varicella), only hospitalizations, deaths, and outbreaks (<math>\geq 3</math> cases, or one case in a high-risk setting)</li> <li><input type="checkbox"/> Chikungunya Virus Infection</li> <li><input type="radio"/> <i>Chlamydia trachomatis</i> infection, including lymphogranuloma venereum (LGV) ■</li> <li><input type="radio"/> Cholera +</li> <li><input type="radio"/> Ciguatera Fish Poisoning</li> <li><input type="radio"/> Coccidioidomycosis</li> <li><input type="radio"/> Creutzfeldt-Jakob Disease (CJD) and other Transmissible Spongiform Encephalopathies (TSE)</li> <li><input type="checkbox"/> Cryptosporidiosis</li> <li><input type="radio"/> Cyclosporiasis</li> <li><input type="radio"/> Cysticercosis or Taeniasis</li> <li><input type="radio"/> Dengue Virus Infection</li> <li><input type="radio"/> Diphtheria +</li> <li><input type="radio"/> Domoic Acid (Amnesic Shellfish) Poisoning</li> <li><input type="radio"/> Ehrlichiosis</li> <li><input type="checkbox"/> Encephalitis, specify etiology: viral, bacterial, fungal or parasitic</li> <li><input type="radio"/> <i>Escherichia coli</i>, shiga toxin producing (STEC) including <i>E. coli</i> O157 +</li> <li><input type="radio"/> Flavivirus infection of undetermined species</li> <li><input type="checkbox"/> Foodborne Disease</li> <li><input type="radio"/> Foodborne Outbreak; 2 or more suspected cases from separate households with same assumed source</li> <li><input type="radio"/> Giardiasis</li> <li><input type="radio"/> Gonococcal Infection ■</li> <li><input type="checkbox"/> <i>Haemophilus influenzae</i>, invasive disease only, all serotypes, less than 5 years of age</li> </ul> | <ul style="list-style-type: none"> <li><input type="checkbox"/> Hantavirus Infection</li> <li><input type="radio"/> Hemolytic Uremic Syndrome</li> <li><input type="checkbox"/> Hepatitis A, acute infection</li> <li><input type="radio"/> Hepatitis B, specify acute or chronic</li> <li><input type="radio"/> Hepatitis C, specify acute or chronic</li> <li><input type="radio"/> Hepatitis D (Delta), specify acute or chronic</li> <li><input type="radio"/> Hepatitis E, acute infection</li> <li><input type="radio"/> Human Immunodeficiency Virus (HIV) infection, stage 3 (AIDS) ■ (§2641.30-2643.20)</li> <li><input type="radio"/> Human Immunodeficiency Virus (HIV), acute infection ■ (§2641.30-2643.20)</li> <li><input type="radio"/> Influenza deaths, laboratory confirmed cases only, <u>all ages</u> ★</li> <li><input type="radio"/> Influenza, novel strains, human</li> <li><input type="radio"/> Legionellosis</li> <li><input type="radio"/> Leprosy (Hansen's Disease)</li> <li><input type="radio"/> Leptospirosis</li> <li><input type="checkbox"/> Listeriosis +</li> <li><input type="radio"/> Lyme Disease</li> <li><input type="checkbox"/> Malaria +</li> <li><input type="radio"/> Measles (Rubeola)</li> <li><input type="checkbox"/> Meningitis, specify etiology: viral, bacterial, fungal, or parasitic</li> <li><input type="radio"/> Meningococcal Infection</li> <li><input type="radio"/> Mumps</li> <li><input type="radio"/> Myelitis, acute flaccid ★</li> <li><input type="radio"/> Novel virus infection with pandemic potential</li> <li><input type="radio"/> Paralytic Shellfish Poisoning</li> <li><input type="checkbox"/> Pertussis (Whooping Cough)</li> <li><input type="radio"/> Plague, human or animal +</li> <li><input type="checkbox"/> Poliovirus Infection</li> <li><input type="checkbox"/> Psittacosis</li> <li><input type="checkbox"/> Q Fever</li> <li><input type="radio"/> Rabies, human or animal</li> <li><input type="checkbox"/> Relapsing Fever</li> <li><input type="radio"/> Respiratory Syncytial Virus, deaths and less than 5 years only</li> <li><input type="radio"/> Rickettsial Diseases (non-Rocky Mountain Spotted Fever), including Typhus and Typhus-like Illnesses</li> </ul> | <ul style="list-style-type: none"> <li><input type="radio"/> Rocky Mountain Spotted Fever</li> <li><input type="radio"/> Rubella (German Measles)</li> <li><input type="radio"/> Rubella Syndrome, Congenital</li> <li><input type="checkbox"/> Salmonellosis, other than Typhoid Fever +</li> <li><input type="checkbox"/> Scabies, atypical or crusted ★</li> <li><input type="radio"/> Scombroid Fish Poisoning</li> <li><input type="radio"/> Shiga Toxin, detected in feces</li> <li><input type="checkbox"/> Shigellosis</li> <li><input type="radio"/> Smallpox (Variola)</li> <li><input type="radio"/> Streptococcal Infection, outbreaks any type</li> <li><input type="checkbox"/> Streptococcal Infection, individual case in a food handler or dairy worker</li> <li><input type="checkbox"/> Streptococcal Infection, Invasive Group A, including Streptococcal Toxic Shock Syndrome and Necrotizing Fasciitis; do <u>not</u> report individual cases of pharyngitis or scarlet fever. ★</li> <li><input type="radio"/> <i>Streptococcus pneumoniae</i>, invasive ★</li> <li><input type="checkbox"/> Syphilis ■</li> <li><input type="radio"/> Tetanus</li> <li><input type="checkbox"/> Trichinosis</li> <li><input type="checkbox"/> Tuberculosis + ■</li> <li><input type="radio"/> Tularemia, animal</li> <li><input type="radio"/> Tularemia, human +</li> <li><input type="checkbox"/> Typhoid Fever, cases and carriers +</li> <li><input type="checkbox"/> <i>Vibrio</i> Infection +</li> <li><input type="radio"/> Viral Hemorrhagic Fevers, human or animal (e.g., Crimean-Congo, Ebola, Lassa and Marburg viruses)</li> <li><input type="checkbox"/> West Nile Virus (WNV) Infection</li> <li><input type="radio"/> Yellow Fever</li> <li><input type="checkbox"/> Yersiniosis</li> <li><input type="radio"/> Zika Virus Infection</li> </ul> <p><input type="radio"/> <b>OCCURRENCE OF ANY UNUSUAL DISEASE</b></p> <p><input type="radio"/> <b>OUTBREAKS OF ANY DISEASE</b>, including diseases not listed above. Specify if occurring in an institution and/or the open community.</p> |
|--|--|--|

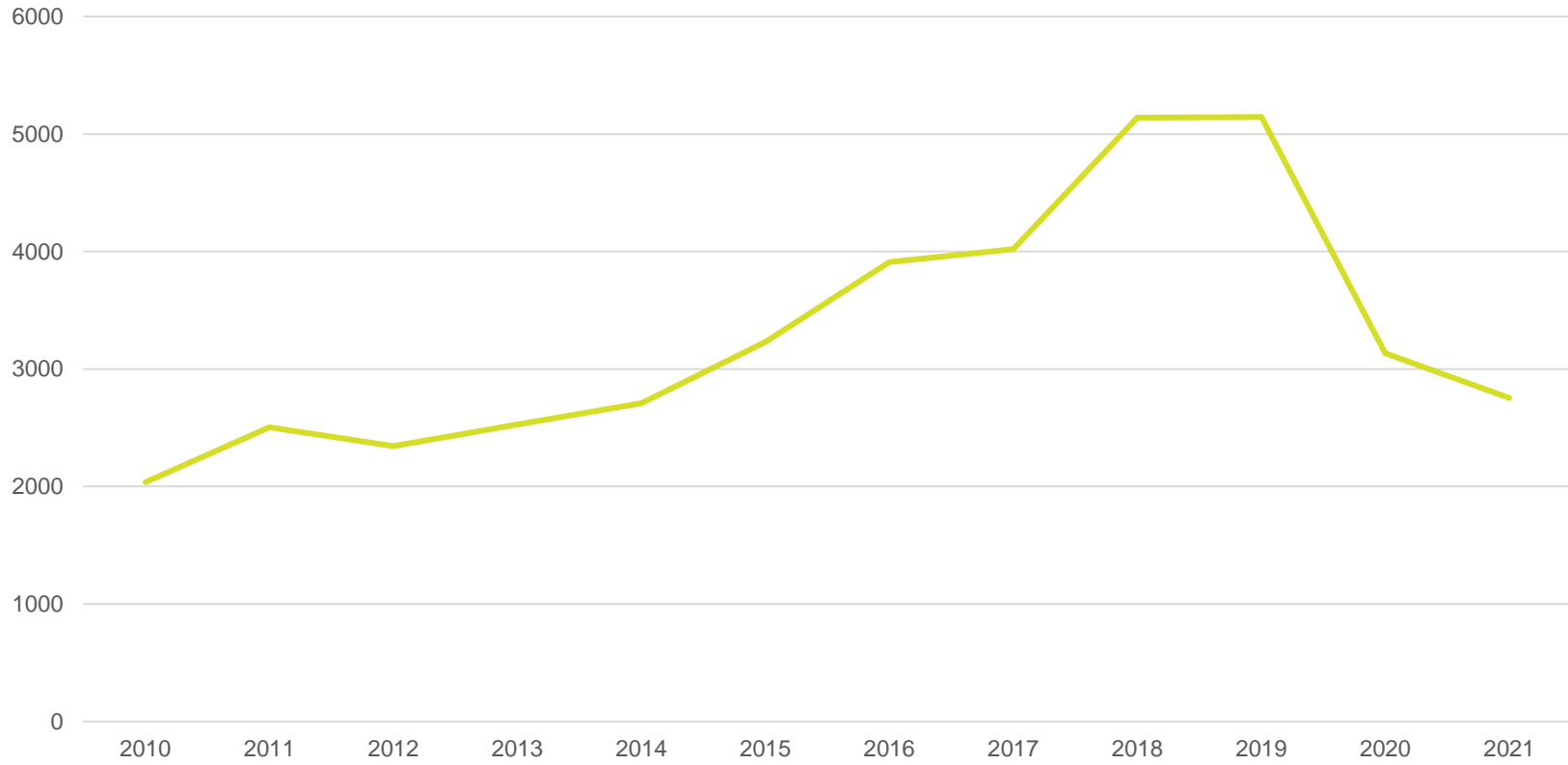


SAN MATEO COUNTY HEALTH

**PUBLIC HEALTH,  
POLICY & PLANNING**

# Outbreak Response

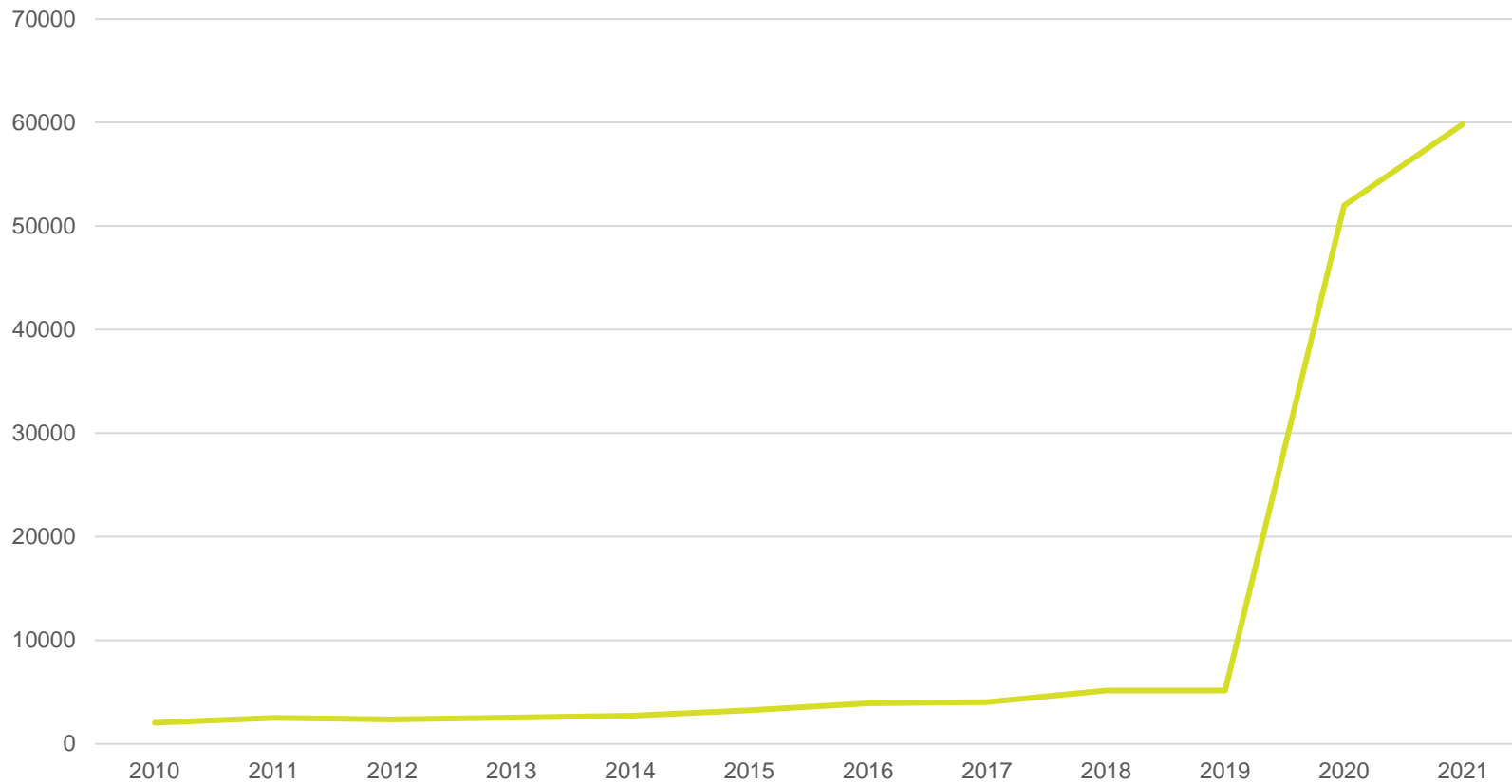
- Emerging Infectious Diseases
- H1N1 Influenza 2009
- Zika
- Ebola
- COVID-19
- Monkeypox
- Reportable Infections
- Re-emerging Infectious Diseases
- Foodborne Illness Infections
- Healthcare Acquired Infections
- Facility-based Outbreaks
- Vaccine-preventable Infections



# Annual Disease Reports 2010-2021



SAN MATEO COUNTY HEALTH  
**PUBLIC HEALTH,  
POLICY & PLANNING**



# Annual Disease Reports 2010-2021 Including COVID-19



SAN MATEO COUNTY HEALTH  
**PUBLIC HEALTH,  
POLICY & PLANNING**

# Challenges, Realities & Opportunities

## Challenges

- Exhaustion & Burnout
- The Great Resignation
- “Younger” Workforce

## Realities

- Public Health Awareness
- The Great Expectations
- COVID-19 Baseline

## Opportunities

- Lessons Learned
- Expanded Infrastructure
- Advancing Health Equity

Routine + COVID-19 + Monkeypox



SAN MATEO COUNTY HEALTH  
PUBLIC HEALTH,  
POLICY & PLANNING

# Questions?

**Marc Meulman**

**[mmeulman@smcgov.org](mailto:mmeulman@smcgov.org)**

---



**SAN MATEO COUNTY HEALTH**  
**PUBLIC HEALTH,**  
**POLICY & PLANNING**