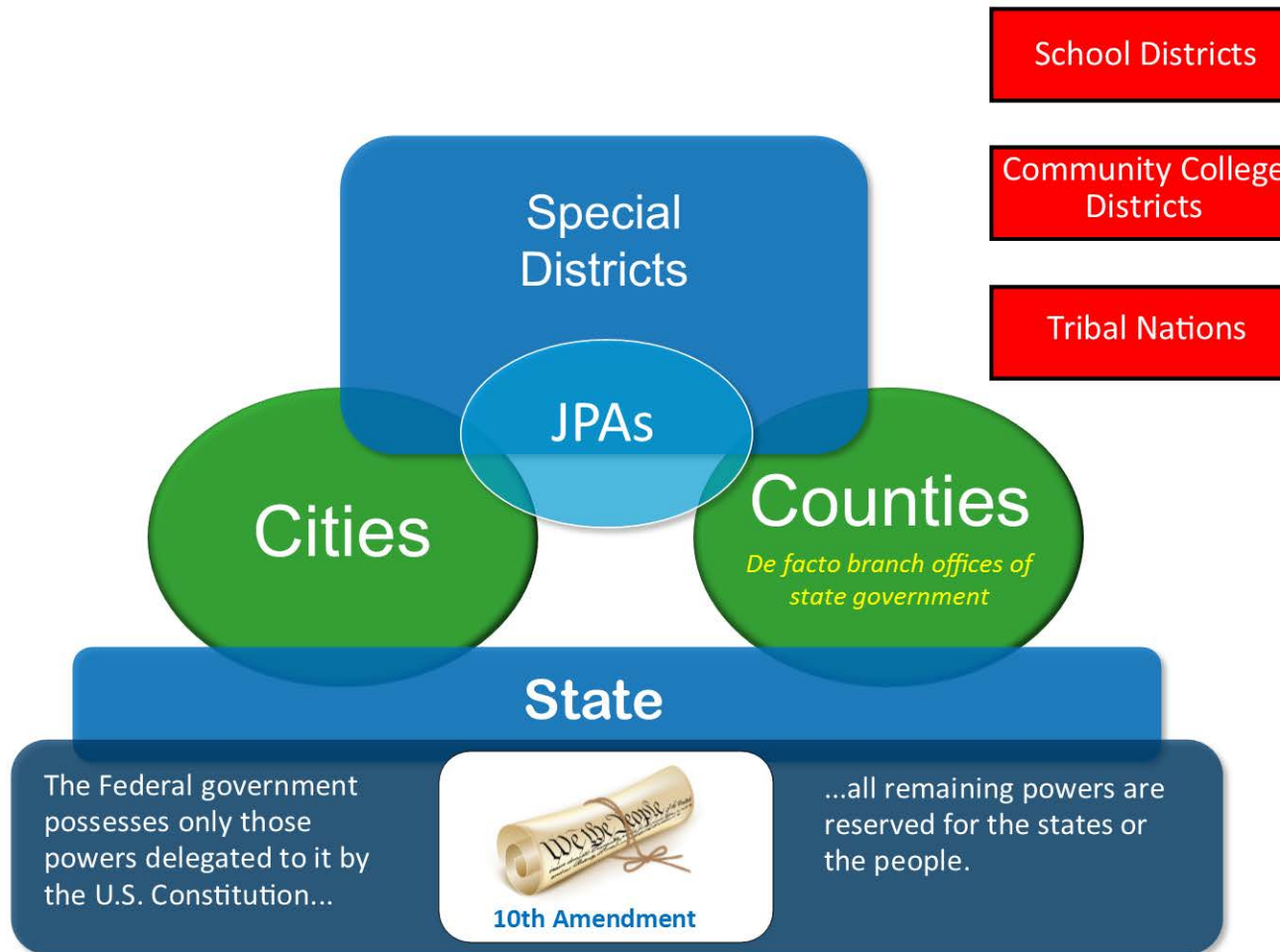




SAN MATEO COUNTY & COUNTY OF SAN MATEO



Where Does the County Fit?





The Geography

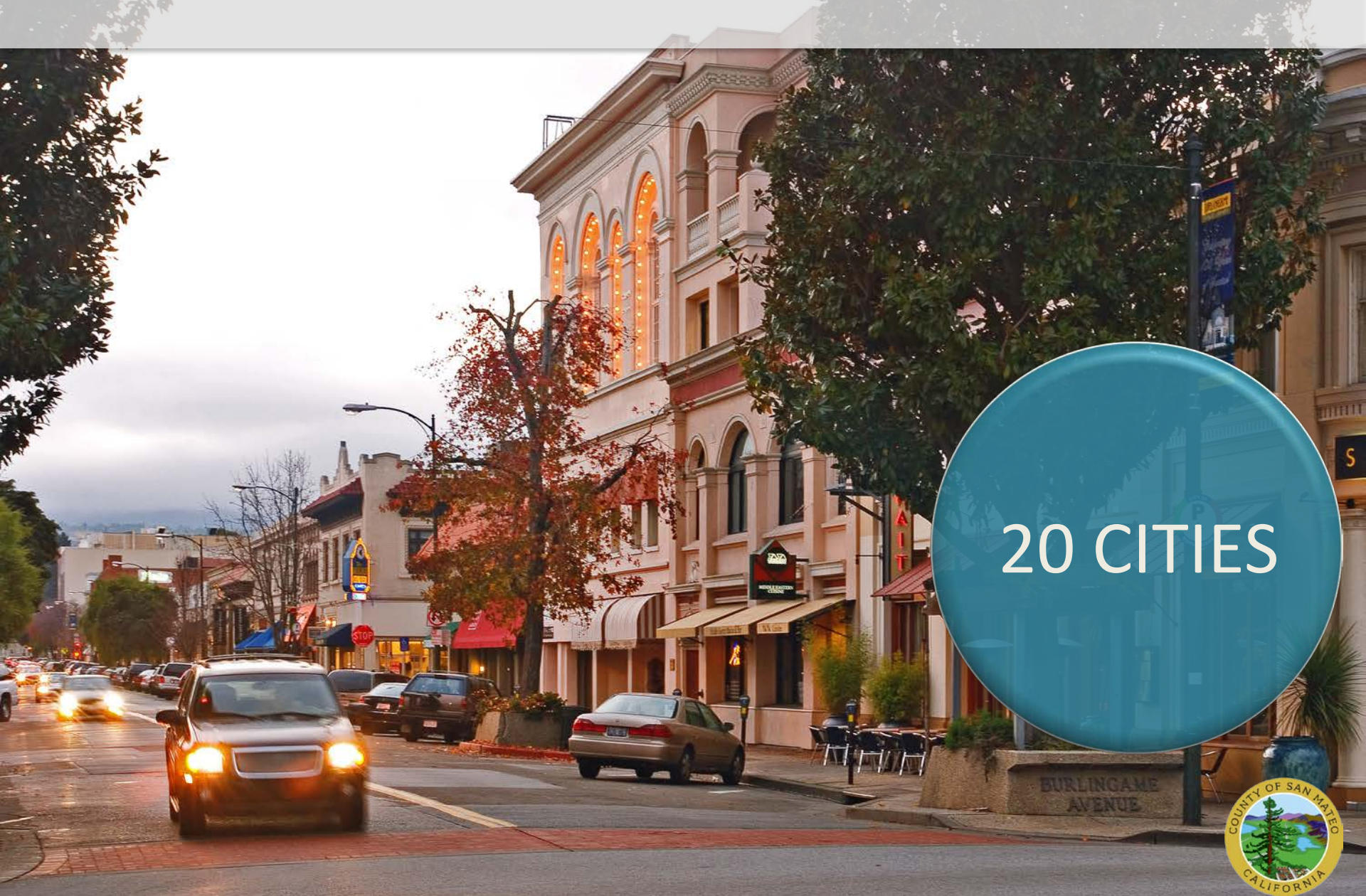


57.7 MILES
OF
COASTLINE





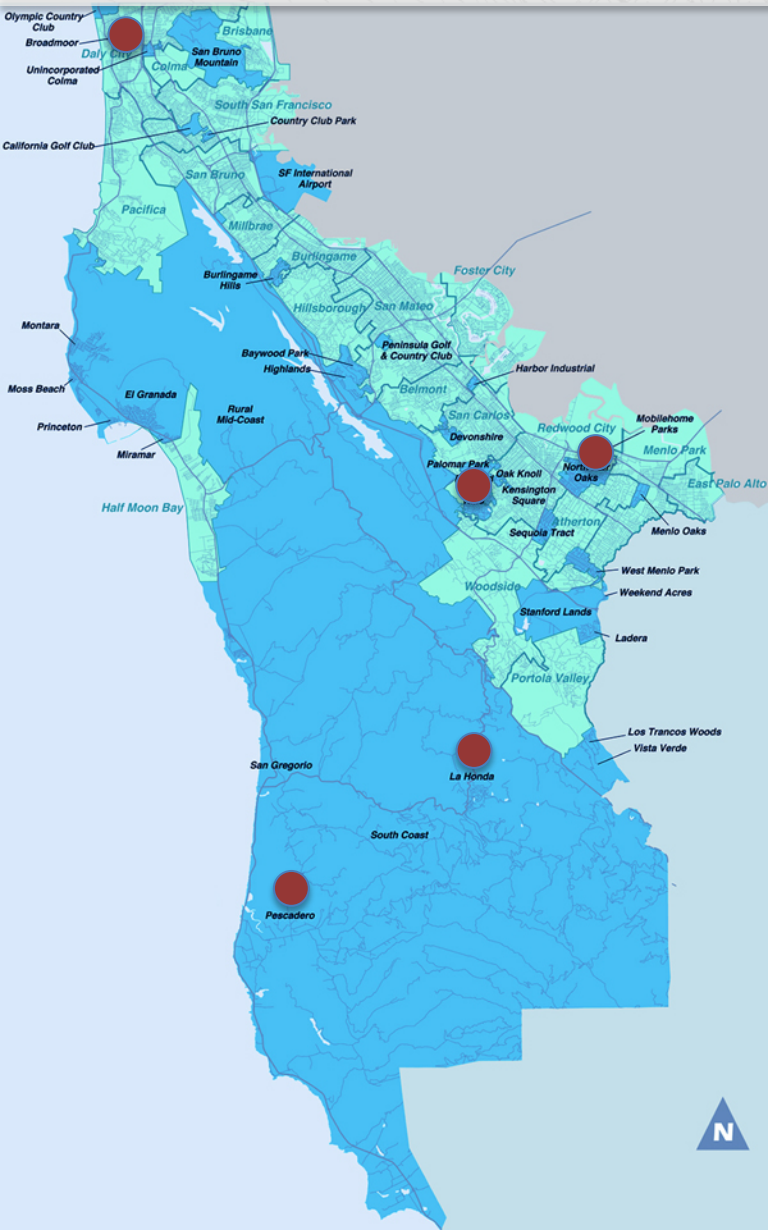
The Jurisdictions



20 CITIES



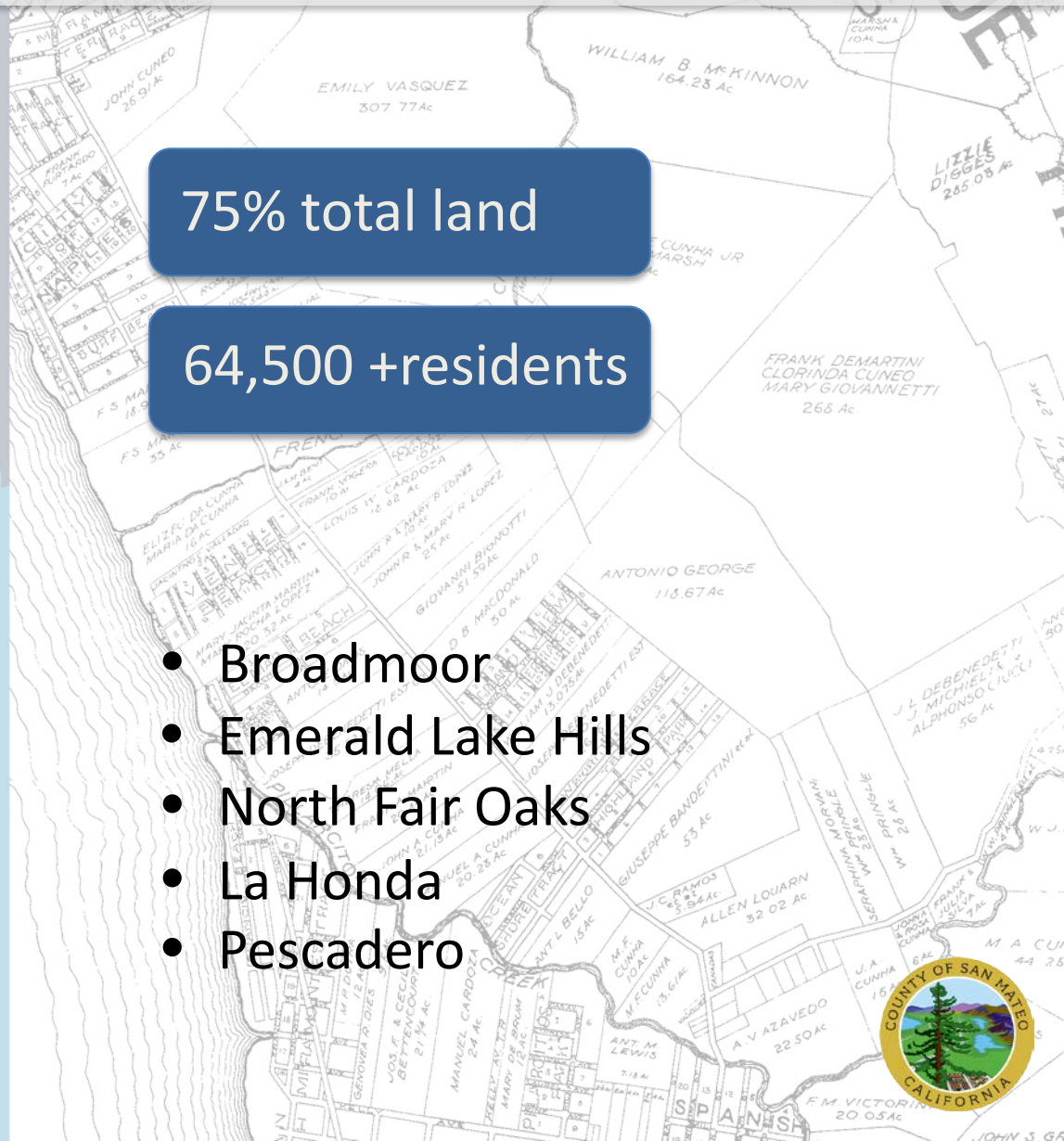
Major Unincorporated Areas



75% total land

64,500 + residents

- Broadmoor
- Emerald Lake Hills
- North Fair Oaks
- La Honda
- Pescadero





Where We Learn



183
PUBLIC SCHOOLS





Who We Are

58% White

31.8% Asian

24.0% Hispanic

5.1% Two or More
Races

2.8% Black

737,888
PEOPLE





Prosperity

- \$128,091 median household income
- \$1.5 million Median Housing Value (as of July 2022)
- 92.5% of Households have Broadband Internet



ONE OF THE
WEALTHIEST
COUNTIES





Wide Disparities Exist



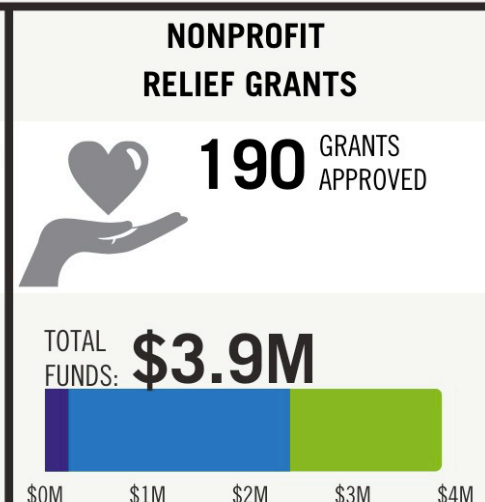
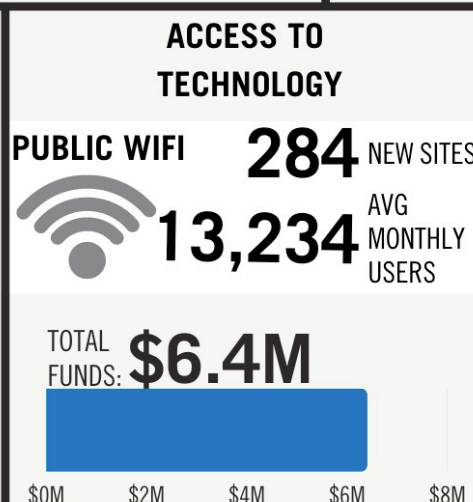
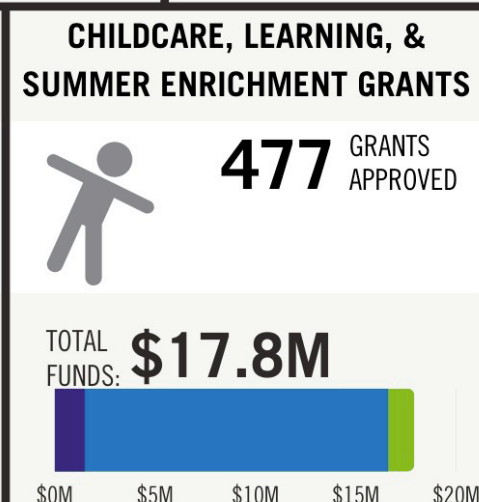
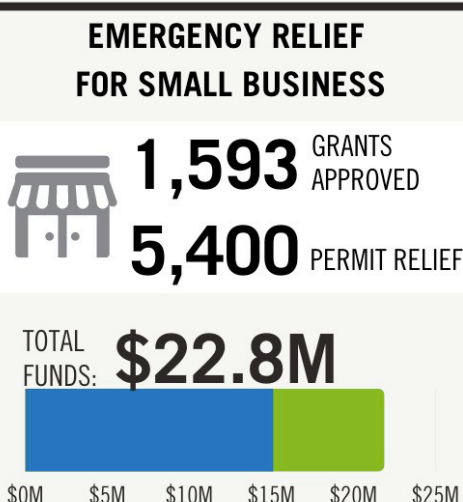
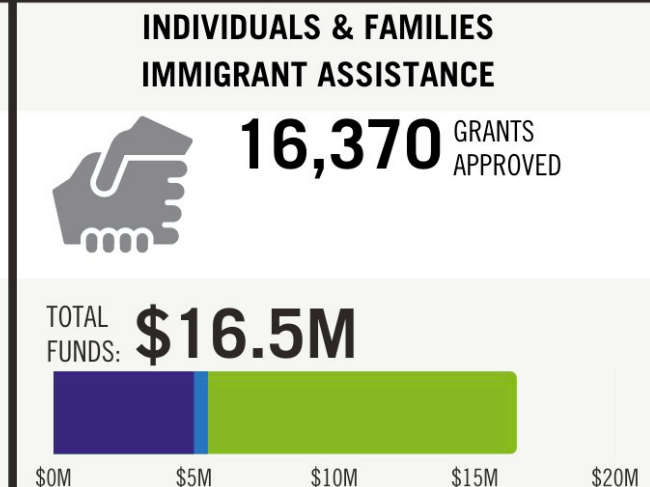
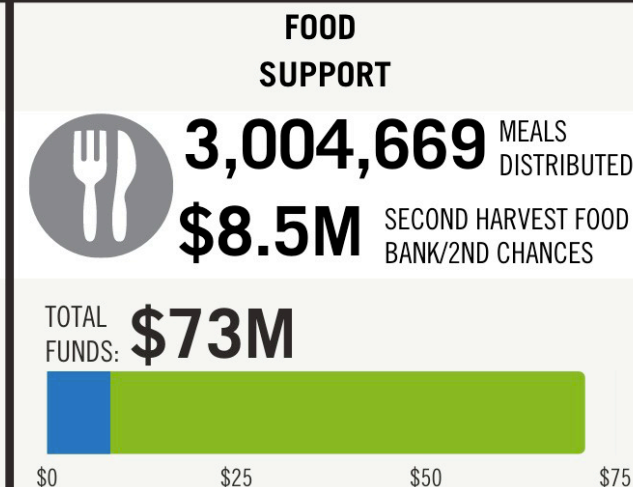
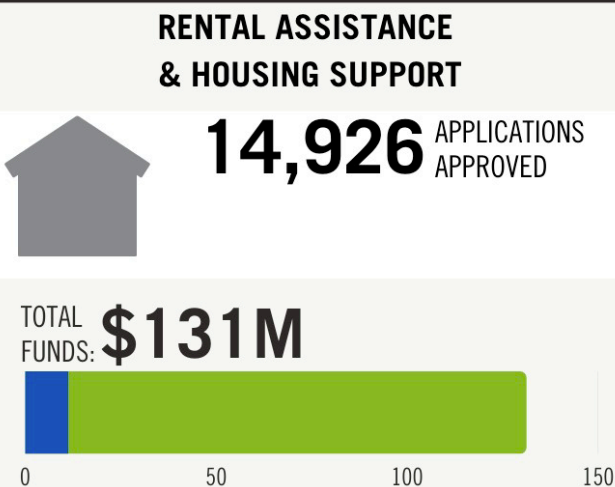
WEALTH
MASKS WIDE
DISPARITIES



COUNTY OF SAN MATEO
INVESTMENT IN COVID-19
RELIEF PROGRAMS

9-4-2022

TOTAL COVID-19 RELIEF FUNDS:
\$272,017,111





County Government



Chief Responsibilities

SAFETY NET
PUBLIC SAFETY
MUNICIPAL SERVICES

20 Departments

5,600+
EMPLOYEES

\$4.2 Billion
FY 2022-23 BUDGET



Elected Officials

Board of Supervisors
(Five Members)

**Assessor/County Clerk-Recorder/Chief
Elections Officer**

Controller

Coroner

District Attorney

Sheriff

Tax Collector/Treasurer





Other Services



Health

Health

San Mateo Medical Center

228 bed hospital
11 clinics
Long term care
Psychiatric services

Other Health Services

In-home Care
Public Health
Basic medical/mental health care
for youth and adults in custody
Emergency medical services
Aging/Adult Services
Environmental Health
Restaurant inspections/
hazardous waste collection

Behavioral Health & Recovery

Mental Health Treatment
Substance Abuse Treatment





Public Assistance

Safety Net Services

Human Services Agency

Social Service Programs
Employment Services
Foster Youth
Child Protective Services
Veterans Services

Department Of Child
Support Services

Establishes and Enforces Child
Support Orders

Workforce Development

Connects low-income job seekers
with employers

Department of Housing

Increases access
to affordable housing





Public Safety

Safety Budget

Sheriff

Law Enforcement
Court Security
Operate Jails

Probation Department

Probation Supervision
Operate Juvenile Hall

Administration of Justice

District Attorney
Private Defenders
County Court Support

Emergency Response

Public Safety
Communications
Fire Protection

Coroner's Office

Investigate cause
and manner of death



Serving the Unincorporated Areas

Municipal Services

Public Works

Planning and Building

Project Development Unit

Office of Sustainability

Parks



Where Does the Money Come From?

\$4.2 BILLION TOTAL BUDGET

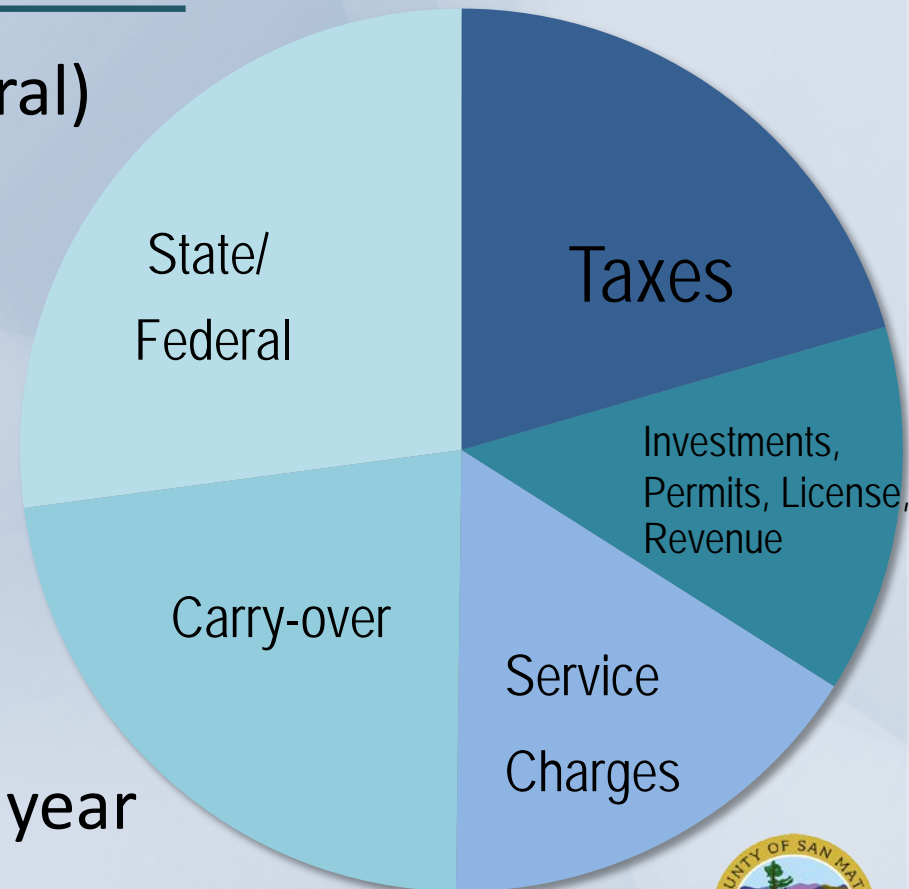
Intergovernmental (state/federal)

Taxes: Property and Sales

Charges for Services

Investments, Permits, License,
Other Revenue Sources

Unspent carry-over from prior year





COUNTY OF SAN MATEO

