

# San Mateo County

## Off-leash Dog Pilot Program Data Summary:

Monitoring Period 2 (October 2021 – December 2021)

### *Baseline Data Collection*

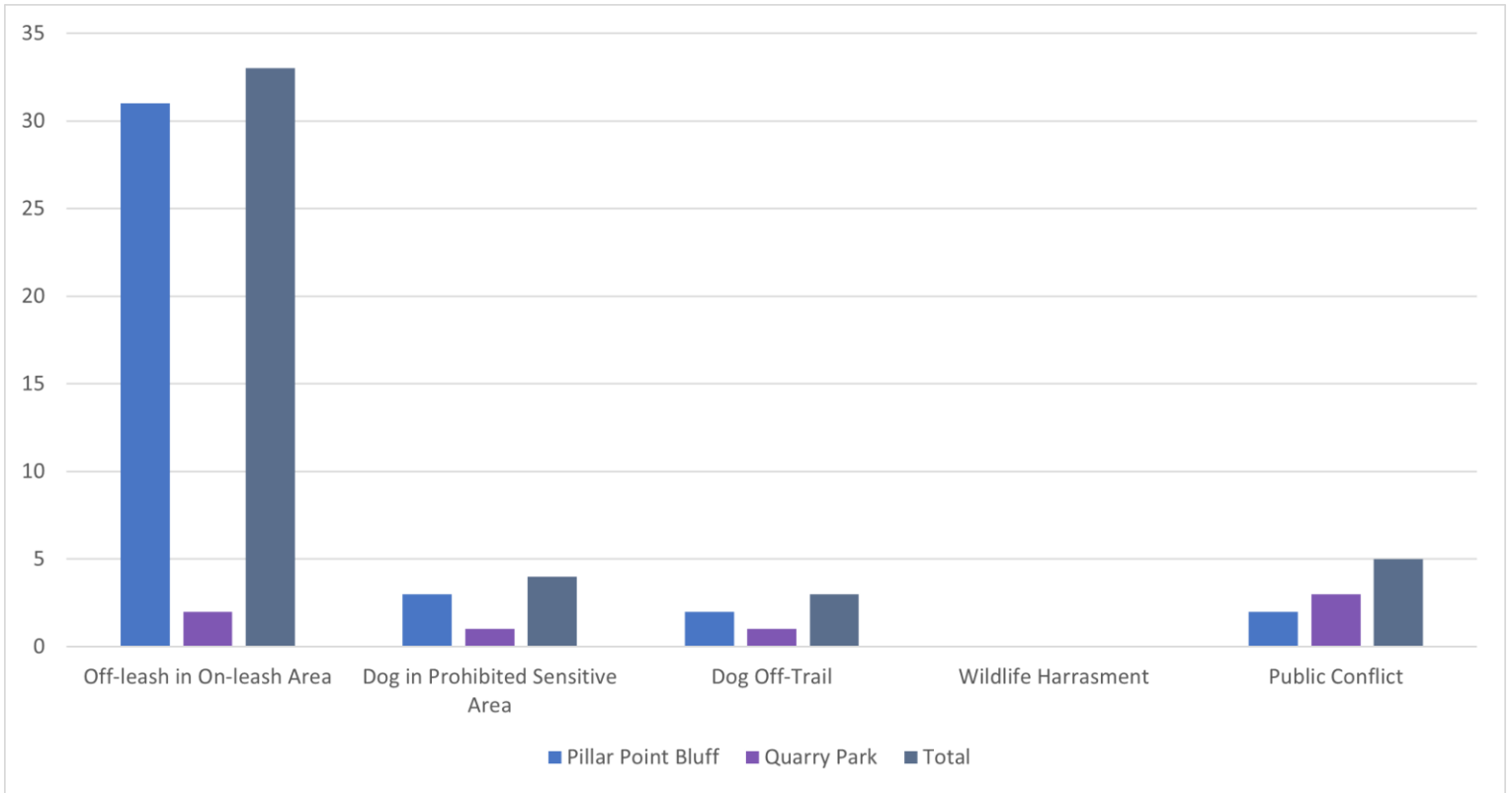
#### I. Data Results

**Table 1.** Overall Dog Monitoring Results at Pillar Point Bluff and Quarry Park, as measured from October 2021 to December 2021.

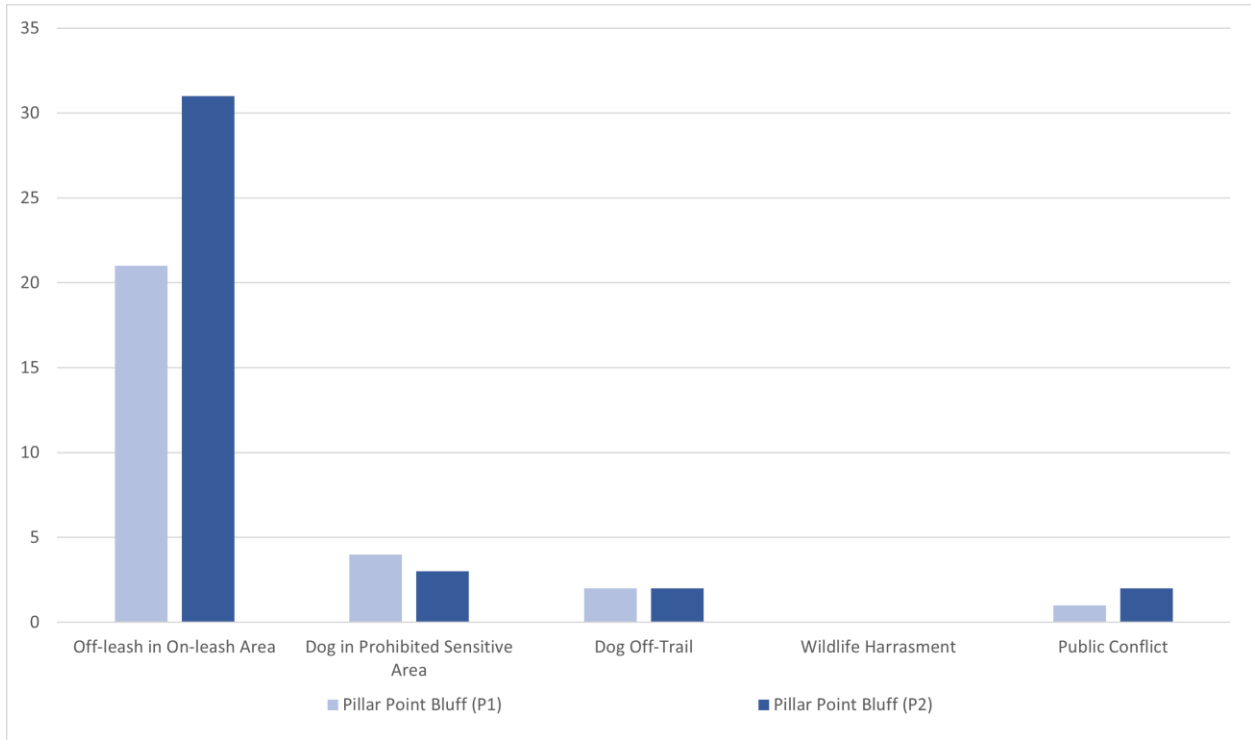
	Standards	Pillar Point Bluff	Quarry Park	Total
Presence of dog waste <sup>1</sup>	No more than 20 occurrences in one month per park	28 instances per month	19 instances per month	47 instances per month
Harassment of wildlife	Dogs observed chasing or harassing wildlife two times over a 60-day period	0 instances	0 instances	0 instances
Dog entry to sensitive areas	No dogs observed entering Parks defined and signed sensitive areas	3 instances	1 instance	4 instances
Dogs traveling off-trail	Dogs observed traveling at 10 feet or more off trail	2 instances	1 instance	3 instances
Leash compliance for on-leash trails	70% <sup>3</sup> of parties with dogs will have their dogs on a leash on any given day	51% leash compliance	80% leash compliance	66% leash compliance
Interactions with dogs and visitors	Any dog is observed exhibiting unwelcome behavior(s) to other dogs or visitors 10 times per month per park	2 instances	3 instances	5 instances

<sup>1</sup> “Per month” data for this row was calculated by averaging the total observations for each month indicated in table 2.

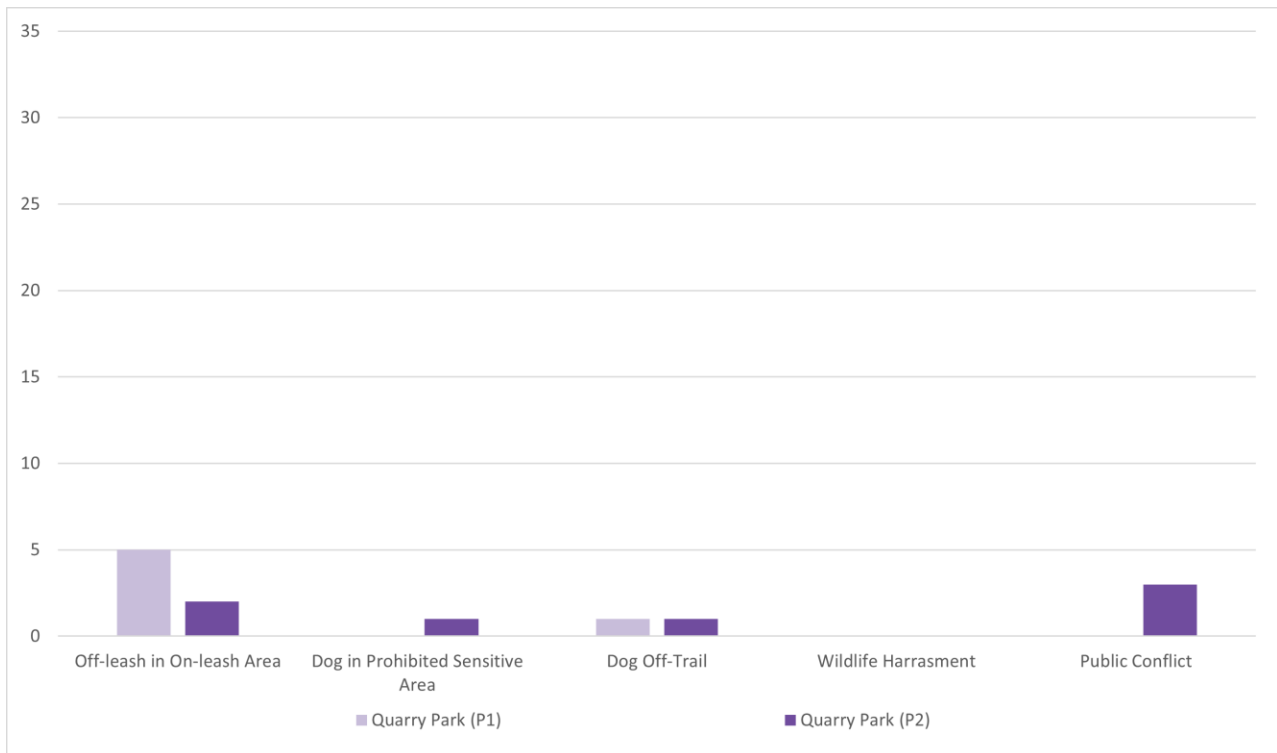
**Graph 1.** Dog Monitoring Results (excluding “Presence of Dog Waste”) at Pillar Point Bluff and Quarry Park, as measured from October 2021 to December 2021.



**Graph 2a.** Change in Dog Monitoring Results (excluding “Presence of Dog Waste”) at Pillar Point Bluff between Monitoring Period 1 and Monitoring Period 2.



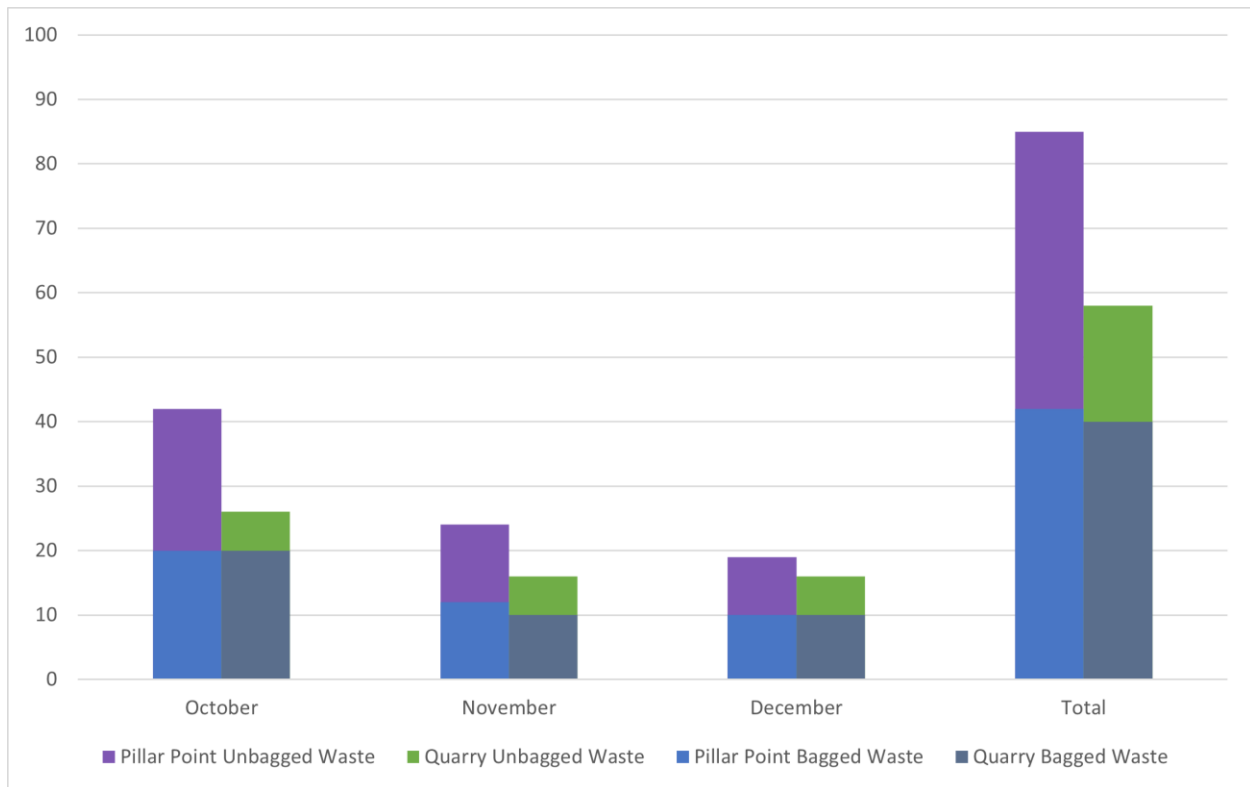
**Graph 2b.** Change in Dog Monitoring Results (excluding “Presence of Dog Waste”) at Quarry Park between Monitoring Period 1 and Monitoring Period 2.



**Table 2.** Monthly Dog Monitoring Results for “Presence of Dog Waste” and “Interactions with Dogs and Visitors” at Pillar Point Bluff and Quarry Park, as measured from October 2021 to December 2021.

		October	November	December	Total
Pillar Point Bluff	Presence of Dog Waste	42 instances	24 instances	19 instances	85 instances
	Interactions with Dogs and Visitors	2 instances	0 instances	0 instances	2 instances
		October	November	December	Total
Quarry Park	Presence of Dog Waste	26 instances	16 instances	16 instances	58 instances
	Interactions with Dogs and Visitors	0 instances	2 instances	1 instance	3 instances

**Graph 3.** Dog Waste Comparison at Pillar Point Bluff and Quarry Park, as measured from October 2021 to December 2021.



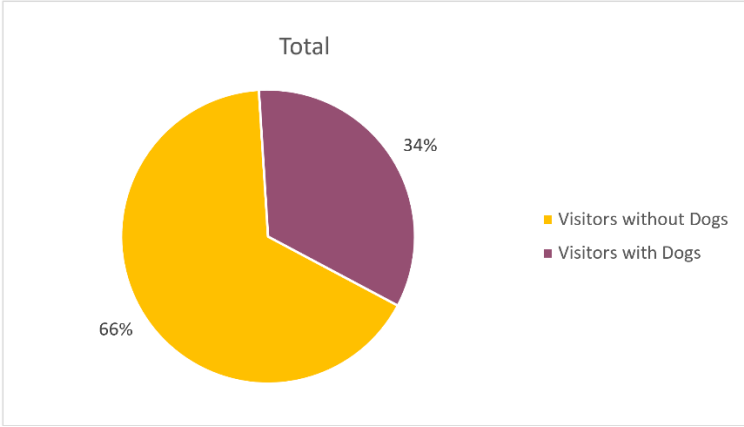
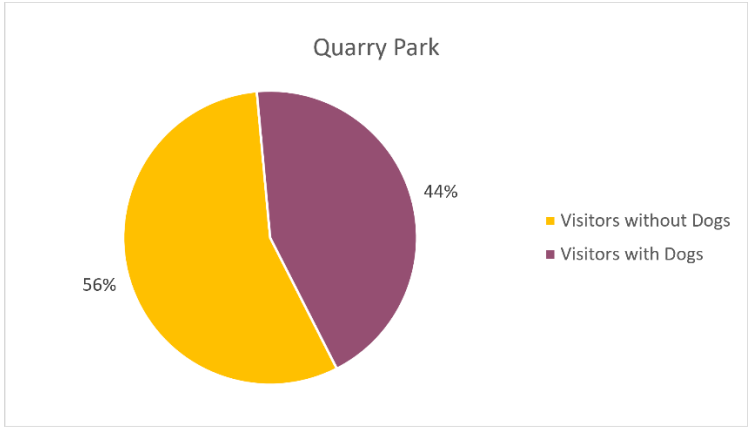
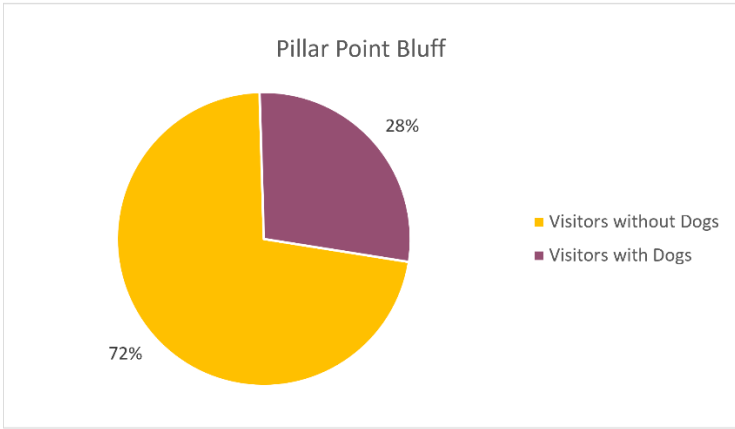
**Table 2.** Visitor Demographics at Pillar Point Bluff and Quarry Park, as measured from October 2021 to December 2021.

	Pillar Point Bluff		Quarry Park		Total	
Total visitors overall	955		546		1,501	
	Total	% of visitors overall	Total	% of visitors overall	Total	% of visitors overall
Visitors without dogs	688	72.0%	306	56.0%	994	66.2%
Visitors with dogs	267	28.0%	240	44.0%	507	33.8%

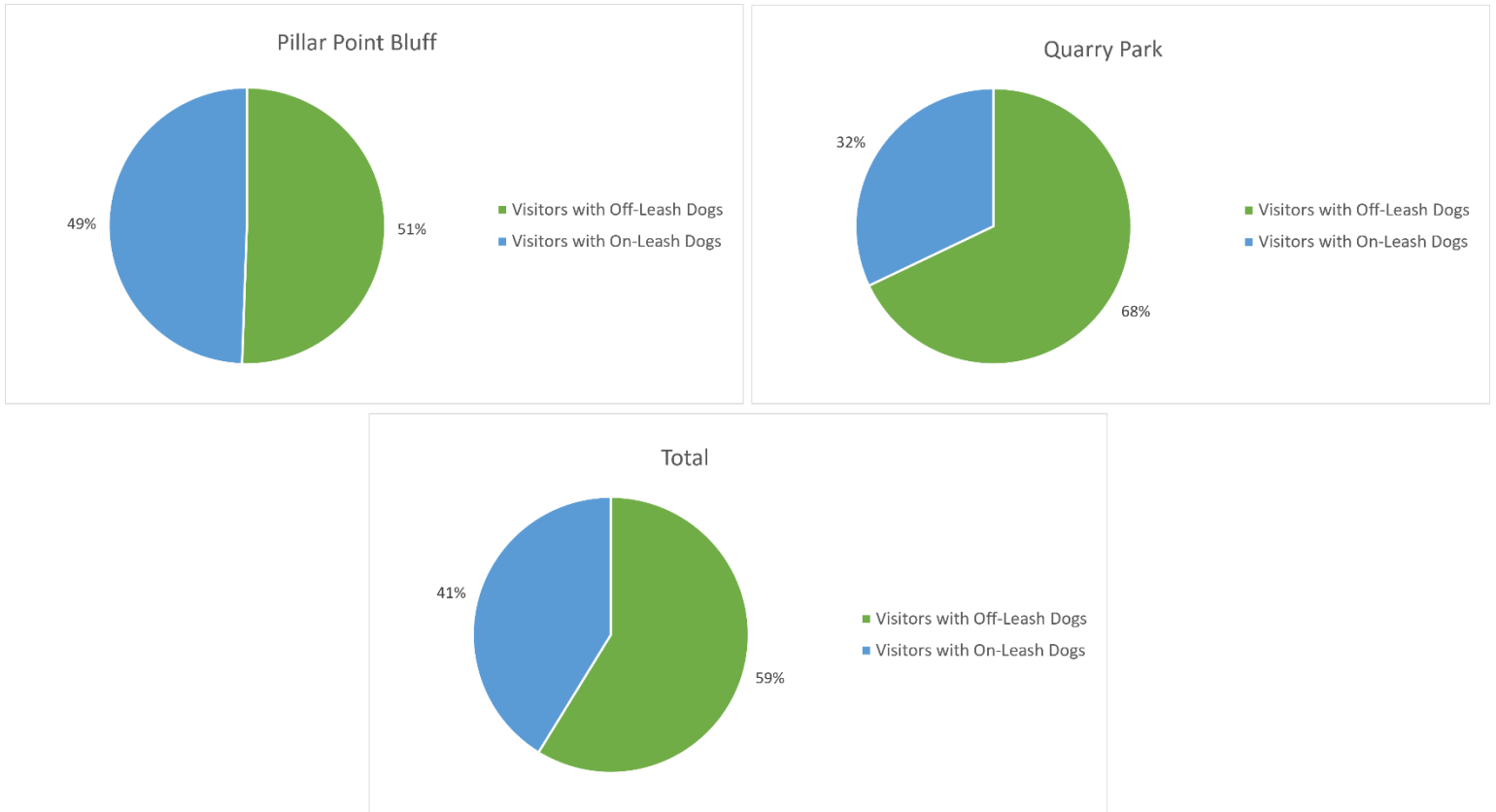
**Table 3.** Demographics of Visitors with Dogs at Pillar Point Bluff and Quarry Park, as measured from October 2021 to December 2021.

	Pillar Point Bluff		Quarry Park		Total	
Total visitors with dogs	267		240		507	
	Total	% of visitors with dogs	Total	% of visitors with dogs	Total	% of visitors with dogs
Visitors with off-leash dogs	135	51.4%	163	67.9%	298	58.9%
Visitors with on-leash dogs	132	49.6%	77	32.1%	209	41.1%

**Graph 4.** Percentage of Visitors with or without Dogs out of Total Visitors at Pillar Point Bluff and Quarry Park, as measured from October 2021 to December 2021.



**Graph 5.** Percentage of Visitors with Off-Leash or On-Leash Dogs out of Visitors with Dogs at Pillar Point Bluff and Quarry Park, as measured from October 2021 to December 2021.



## II. Maps

**Map 1.** Dog Monitoring Criteria (excluding “Presence of Dog Waste”) at Pillar Point Bluff, as measured from October 2021 to December 2021.



### Dog Recreation Incidents: Pillar Point Bluff

0 0.25 0.5 Kilometers

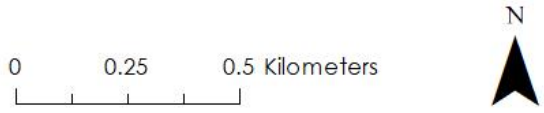




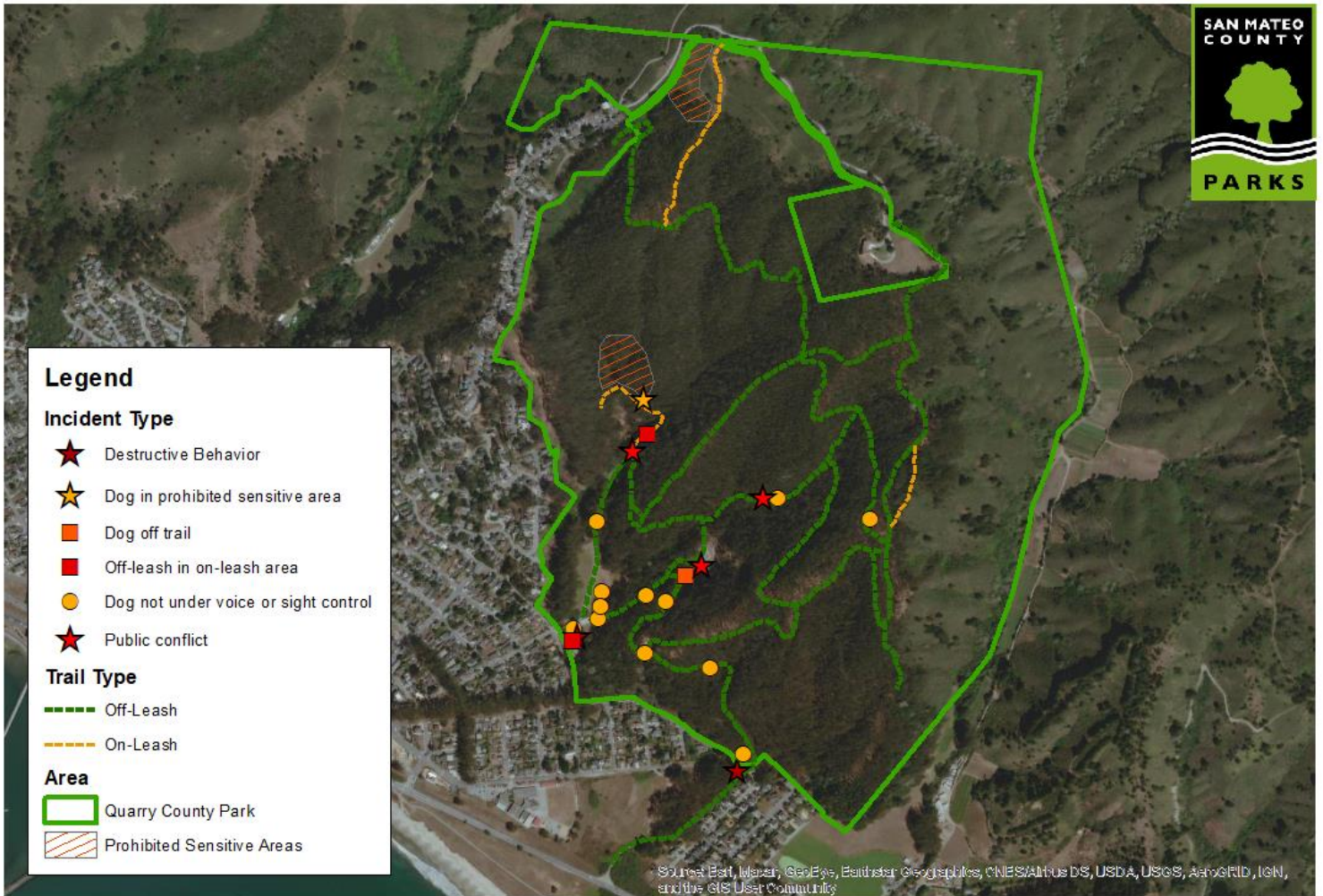
**Map 2.** Dog Waste Observations at Pillar Point Bluff, as measured from October 2021 to December 2021.



### Dog Recreation Incidents: Pillar Point Bluff



**Map 3.** Dog Monitoring Criteria (excluding “Presence of Dog Waste”) at Quarry Park, as measured from October 2021 to December 2021.

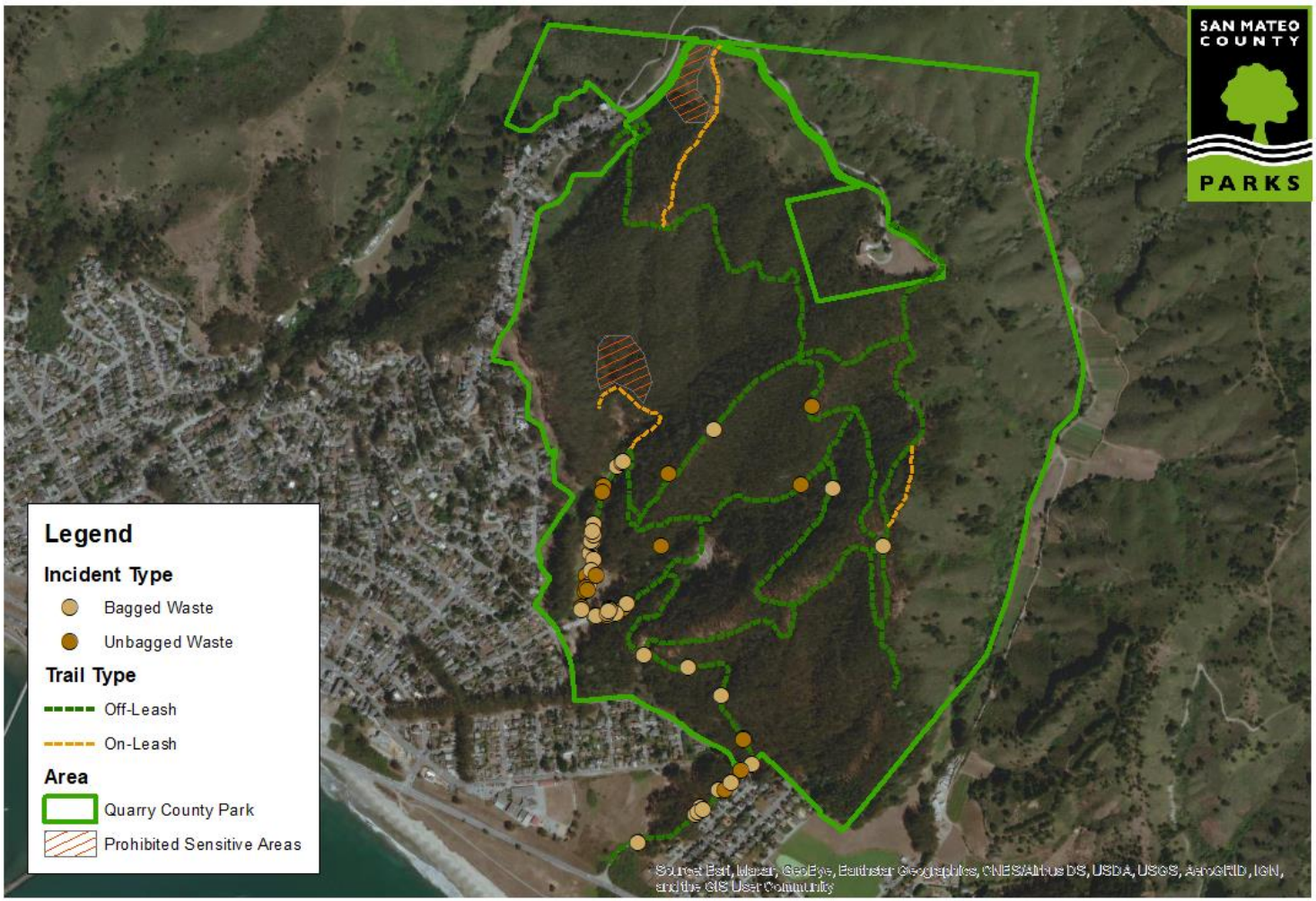


**Dog Recreation Incidents:  
Quarry Park**

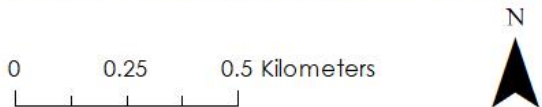
0 0.25 0.5 Kilometers



**Map 4.** Dog Waste Observations at Quarry Park, as measured from October 2021 to December 2021.



**Dog Recreation Incidents:  
Quarry Park**



**III. Summary of Results**

Dog entry into sensitive areas exceeded the established standards at both parks. At Pillar Point Bluff, two entries occurred at Ross' Cove while another occurred at the wetlands near Airport Street; at Quarry Park, one entry was observed at the reservoir. At Pillar Point Bluff, dog waste observed also exceeded the established standards during Monitoring Period 2. Dog waste was observed at a frequency of 28 instances per month—thus exceeding the AMP standard of no more than 20 occurrences per park per month. Observed dog waste at Quarry Park was below the standard at 19 instances per month.

Regarding visitor demographics, Pillar Point Bluff had more overall visitors throughout Monitoring Period 2 with 955 visitors; by contrast, Quarry Park had 546 visitors, bringing the two parks to an overall total of 1,501 visitors. Between the two, Quarry Park was more popular for visitors with dogs, with 44% of its total visitors bringing dogs while only 28% of visitors at Pillar Point Bluff had dogs. Of the visitors with dogs, Quarry Park was more popular among those who let theirs off-leash. 67.9% of visitors with dogs at Quarry Park let their dogs off-leash, while 32.1% kept them on-leash; at Pillar Point Bluff, 51.4% of dogs were taken off-leash while 48.6% remained on-leash.

In comparison to Monitoring Period 1, there are notable differences in the data. Evaluating the general dog monitoring criteria, there is a marked decrease in observed dog waste, going from 101 instances per month in Monitoring Period 1 to 47 instances per month in Monitoring Period 2. Instances of dogs entering sensitive areas or traveling more than 10 feet off-trail remained the same between the two periods, while dogs not being under voice or sight control decreased from 21 instances to 14 instances. By contrast, off-leash in on-leash areas and negative public interactions saw a marginal increase, going from 26 instances to 33 instances and 1 instance to 5 instances respectively. In terms of visitor demographics, Pillar Point Bluff once again had more visitors than Quarry Park throughout Monitoring Period 2, though the overall number of visitors for both parks decreased since Monitoring Period 1. In total, a greater percentage of visitors came with dogs than before---33.8% of total visitors as compared to 30.9%---with a larger majority of them being off-leash than on-leash, at 58.9% for Monitoring Period 2 versus 51.2% for Monitoring Period 1. This change is especially notable at Pillar Point Bluff. In Monitoring Period 1, this park had more on-leash dog users than off-leash, with 36.3% of visitors with dogs letting them off-leash and 63.7% keeping them on-leash; however, this changed drastically in Monitoring Period 2, where visitors with off-leash dogs became the majority, composing 51.4% of all visitors with dogs while visitors with on-leash dogs made up 48.6% of this population.