

San Mateo County

Off-leash Dog Pilot Program Data Summary:

Monitoring Period 3 (January 2022 – February 2022)

Note: Given that the Off-leash Dog Recreation Pilot Program was not approved at Pillar Point Bluff, the Parks Department will no longer be considering this park a candidate for the pilot program at this time. As such, data from Pillar Point Bluff will no longer be published in these reports moving forward.

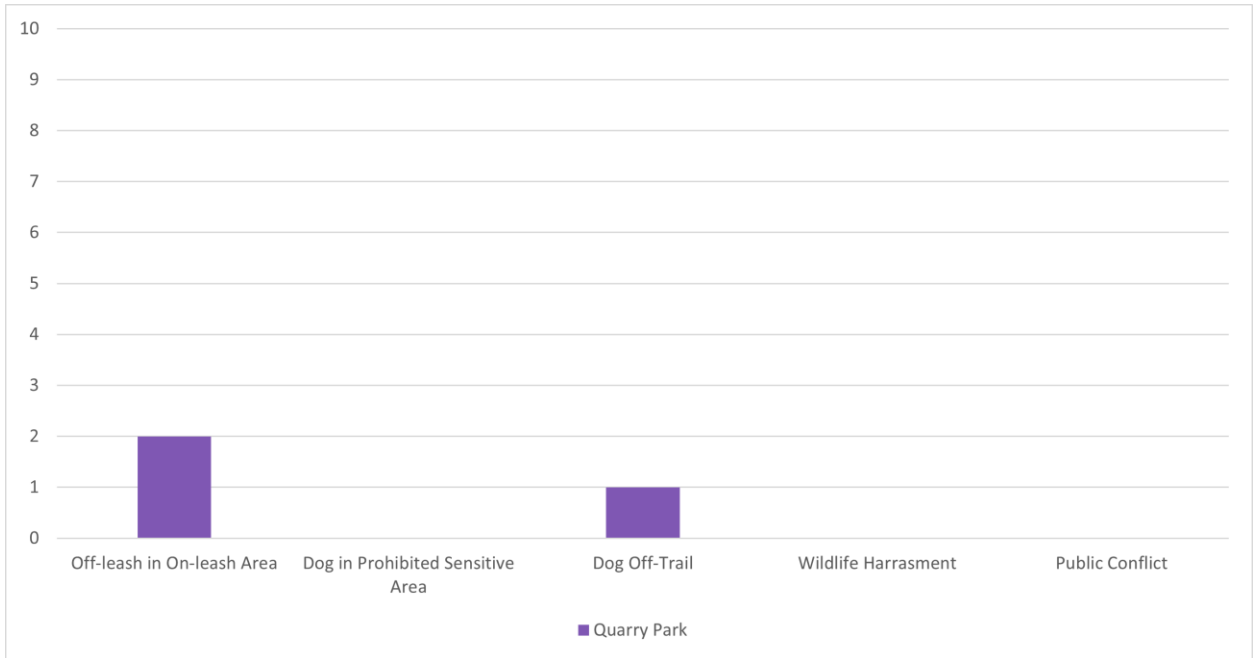
I. Data Results

Table 1. Overall Dog Monitoring Results at Quarry Park, as measured from January 2022 to February 2022.

	Standards	Quarry Park
Presence of dog waste ¹	No more than 20 occurrences in one month per park	15 instances per month
Harassment of wildlife	Dogs observed chasing or harassing wildlife two times over a 60-day period	0 instances
Dog entry to sensitive areas	No dogs observed entering Parks defined and signed sensitive areas	0 instances
Dogs traveling off-trail	Dogs observed traveling at 10 feet or more off trail	1 instance
Leash compliance for on-leash trails	70% of parties with dogs will have their dogs on a leash when using an on-leash trail	83% leash compliance
Interactions with dogs and visitors	Any dog is observed exhibiting unwelcome behavior(s) to other dogs or visitors 10 times per month per park	0 instances

¹ “Per month” data for this row was calculated by averaging the total observations for each month indicated in table 2.

Graph 1. Dog Monitoring Results (excluding “Presence of Dog Waste”) at Pillar Point Bluff and Quarry Park, as measured from January 2022 to February 2022.



Graph 2. Change in Dog Monitoring Results (excluding “Presence of Dog Waste”) at Quarry Park between Monitoring Period 1, Monitoring Period 2, and Monitoring Period 3.

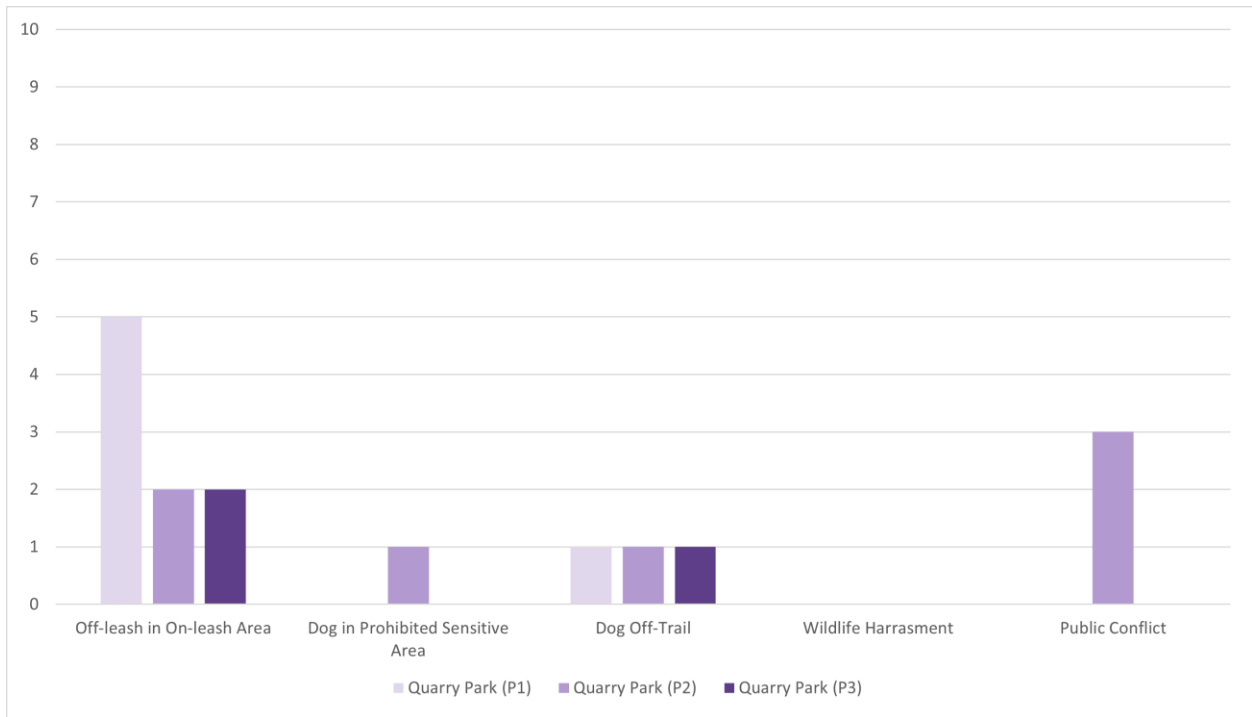


Table 2. Monthly Dog Monitoring Results for “Presence of Dog Waste” and “Interactions with Dogs and Visitors” at Pillar Point Bluff and Quarry Park, as measured from January 2022 to February 2022.

		January	February	Total
Quarry Park	Presence of Dog Waste	17 instances	12 instances	29 instances
	Interactions with Dogs and Visitors	0 instances	0 instances	0 instances

Graph 3. Dog Waste Comparison at Pillar Point Bluff and Quarry Park, as measured from January 2022 to February 2022.

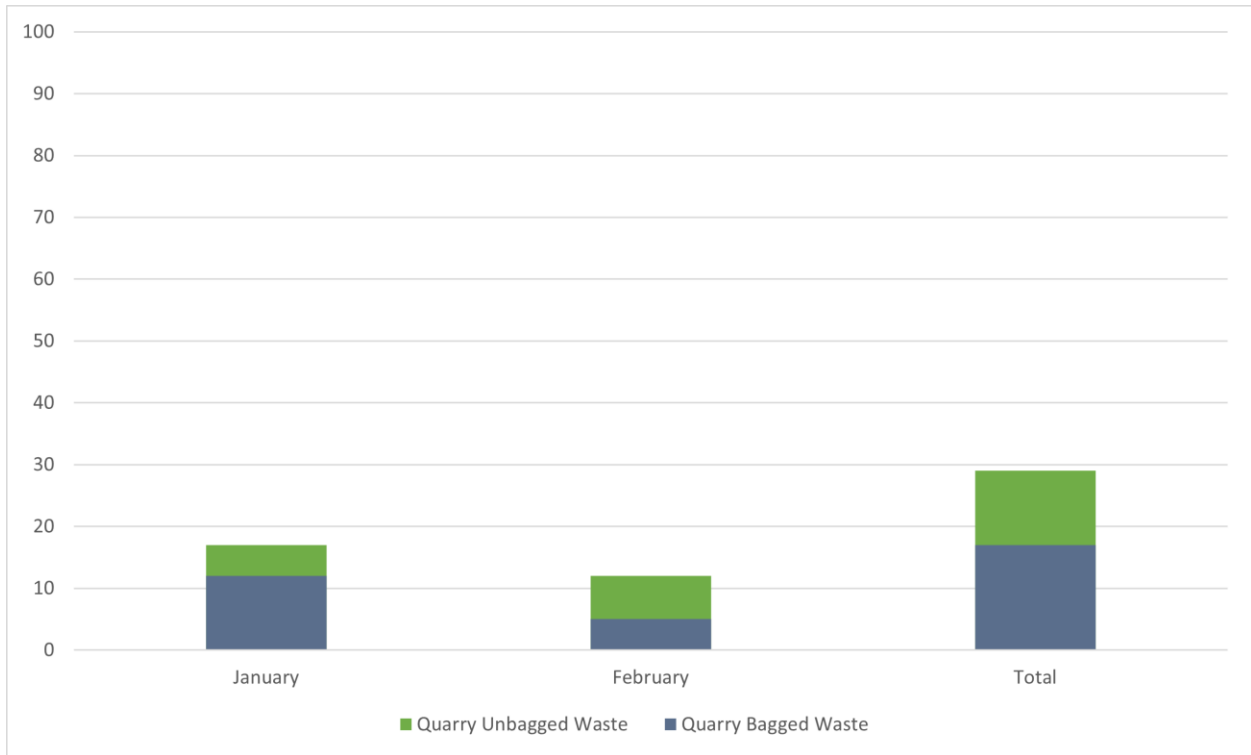


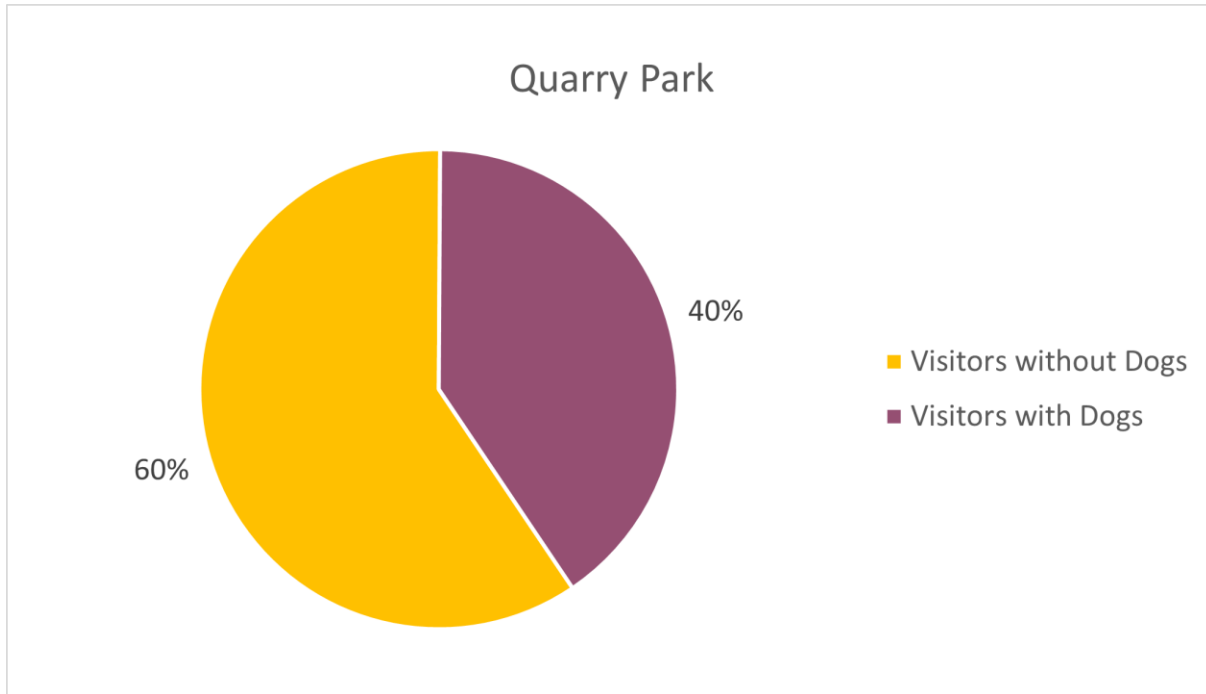
Table 2. Visitor Demographics at Pillar Point Bluff and Quarry Park, as measured from January 2022 to February 2022.

	Quarry Park	
Total visitors overall	561	
	Total	% of visitors overall
Visitors without dogs	334	59.5%
Visitors with dogs	227	40.5%

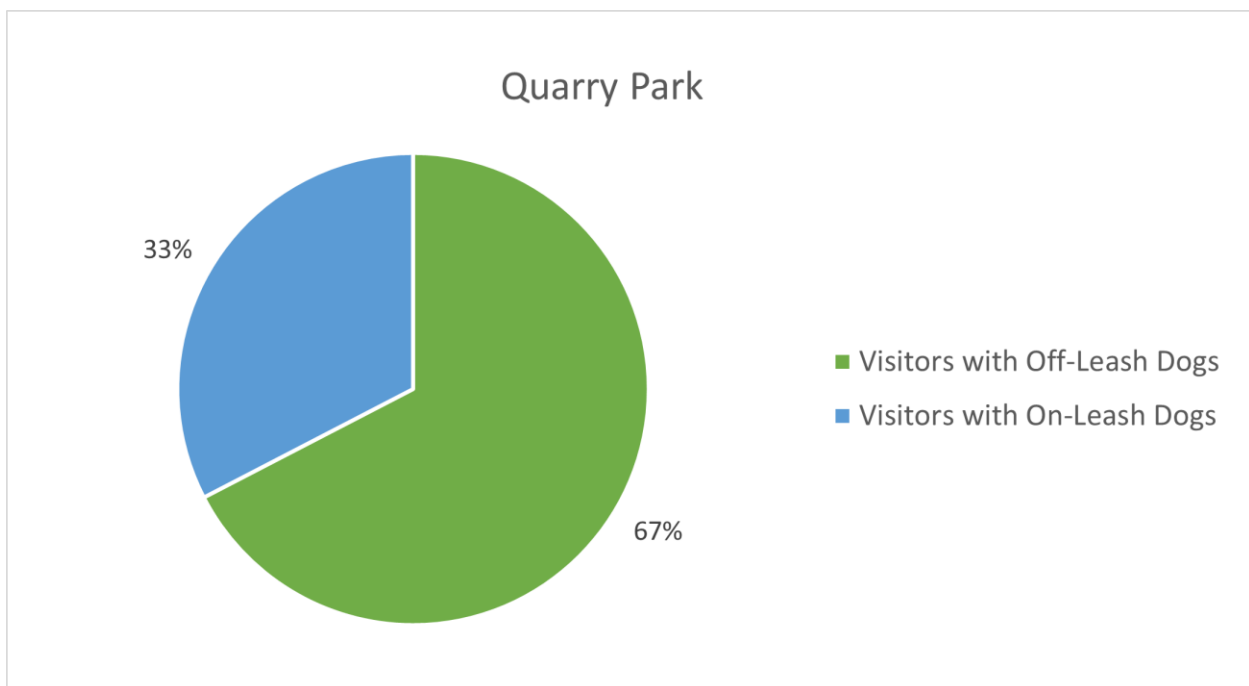
Table 3. Demographics of Visitors with Dogs at Pillar Point Bluff and Quarry Park, as measured from January 2022 to February 2022.

	Quarry Park	
Total visitors with dogs	227	
	Total	% of visitors with dogs
Visitors with off-leash dogs	153	67.4%
Visitors with on-leash dogs	74	32.6%

Graph 4. Percentage of Visitors with or without Dogs out of Total Visitors at Pillar Point Bluff and Quarry Park, as measured from January 2022 to February 2022.

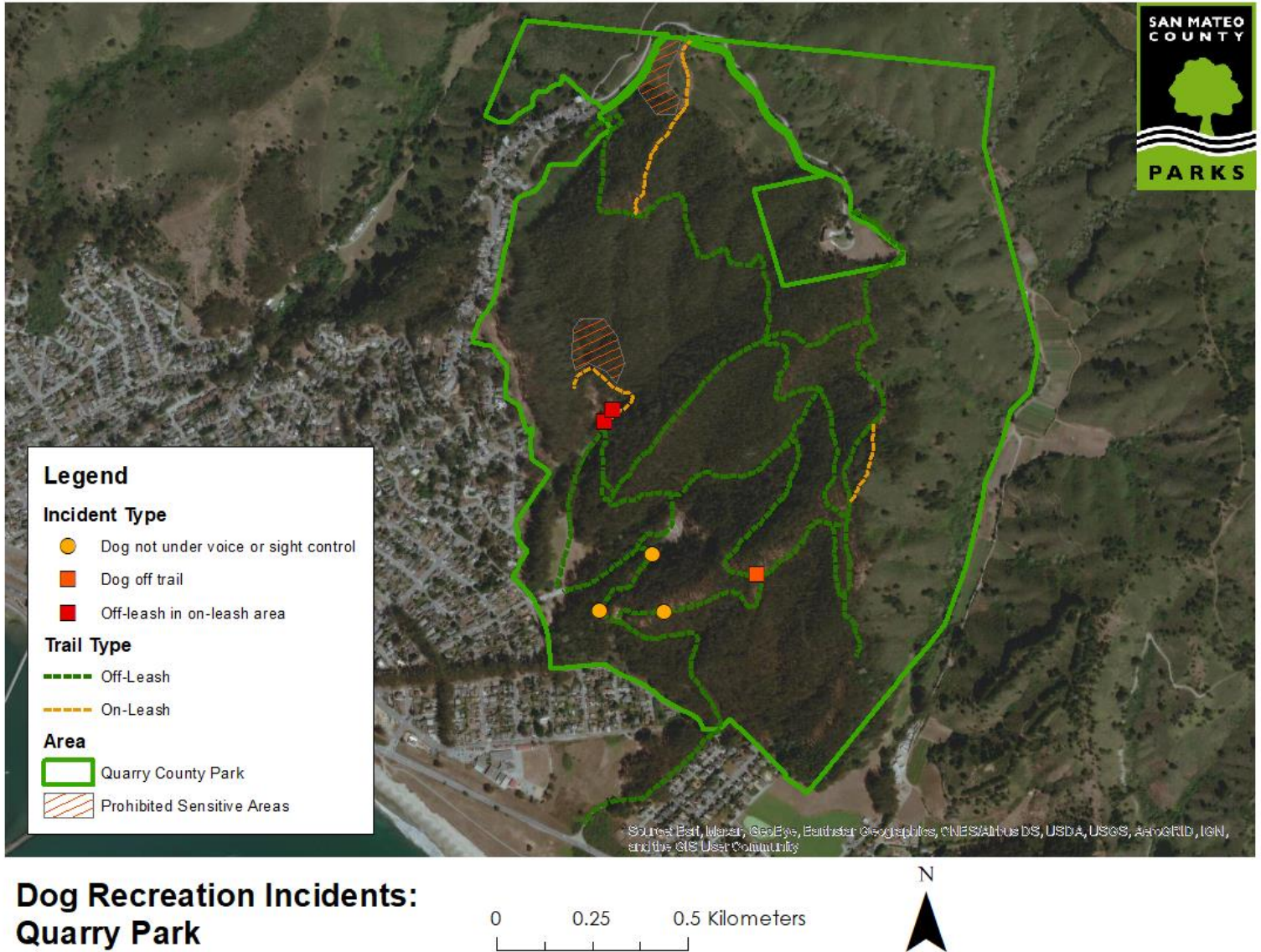


Graph 5. Percentage of Visitors with Off-Leash or On-Leash Dogs out of Visitors with Dogs at Pillar Point Bluff and Quarry Park, as measured from January 2022 to February 2022.

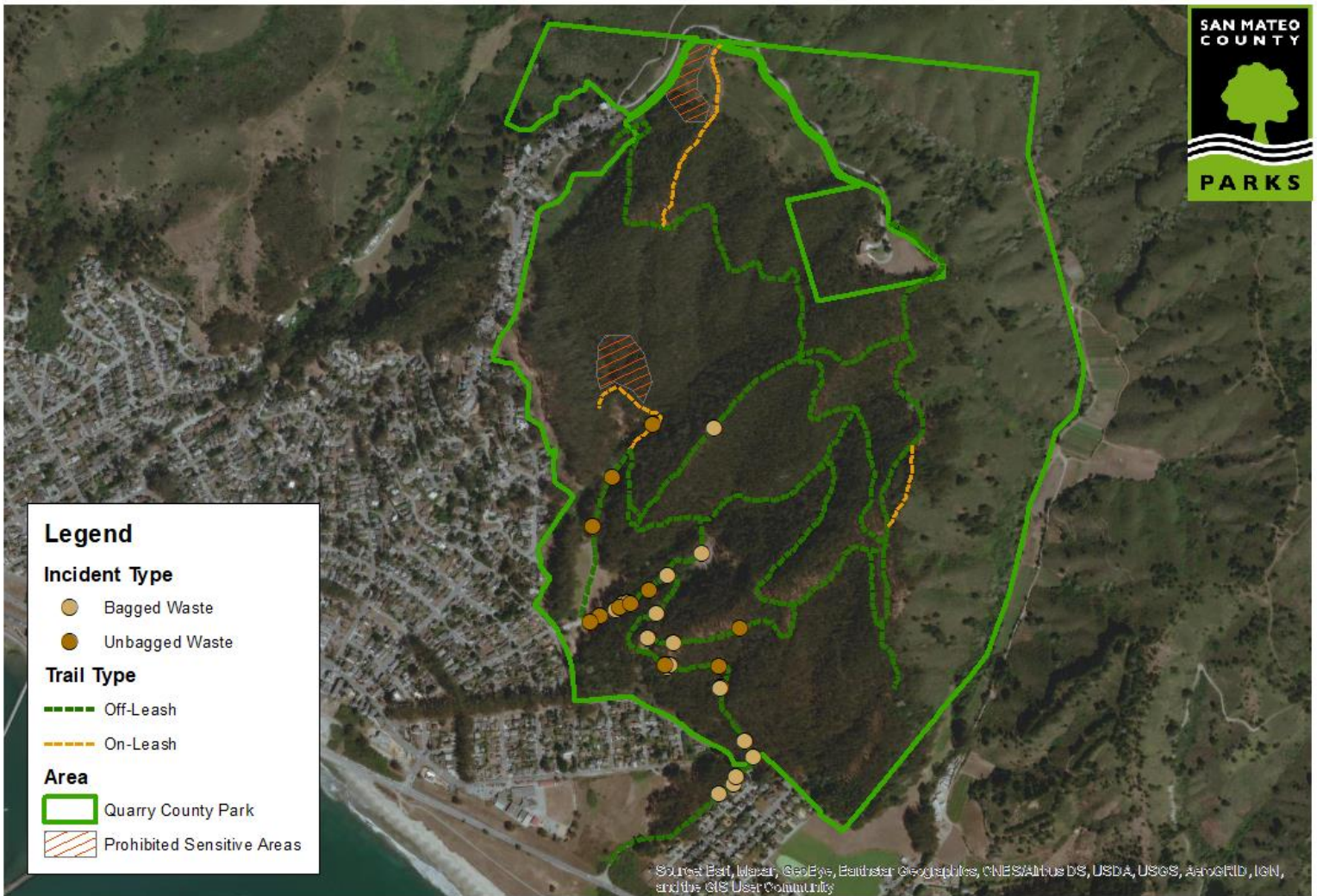


II. Maps

Map 1. Dog Monitoring Criteria (excluding “Presence of Dog Waste”) at Quarry Park, as measured from January 2022 to February 2022.



Map 2. Dog Waste Observations at Quarry Park, as measured from January 2022 to February 2022.



Dog Recreation Incidents: Quarry Park



III. Summary of Results

Overall, Quarry Park had no criteria that exceeded standards, and this is the first time this has occurred throughout all monitoring periods. Another notable first for this monitoring period is the fact that overall leash compliance for on-leash trails met its standard, with Quarry Park reaching 83% compliance. In comparison to Monitoring Period 2, observed dog waste, public conflicts, and entry into prohibited sensitive areas all decreased whereas dogs off-trail or off-leash in an on-leash area remained the same.

Regarding visitor demographics, Quarry Park had 561 total visitors, with 40.5% of its total visitors bringing dogs and 59.5% visiting without dogs. 67.4% of visitors with dogs at Quarry Park let their dogs off-leash, while 32.6% kept them on-leash. In contrast to previous monitoring periods, there was a slight increase in overall visitors from 546 to 561, with an increase in visitors without dogs and a decrease in visitors with dogs. Correspondingly, there was also a decrease in both visitors with off-leash dogs and visitors with on-leash dogs, with the ratio between the two moving from 67.9% off-leash and 32.1% on-leash in Monitoring Period 2 to 67.4% and 32.6% respectively in Monitoring Period 3.