



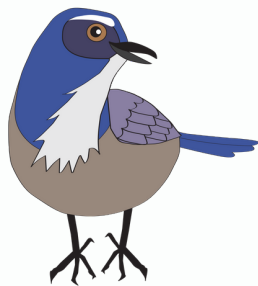
SCRUBLAND/CHAPARRAL

SCRUBLAND/CHAPARRAL BINGO

Let's play BINGO!










The scrubland/chaparral may look dry, but it is full of all sorts of life. It's all over San Mateo County, so check if the park you're in has this ecosystem! Try to find three in a row—across, down, or diagonal.

DID YOU KNOW? A chaparral is a kind of scrubland only found on the west coast, with plants adapted to handle the hot, dry summers and wet winters.



TRY IT:

Many of the animals here are reptiles and love to soak in the sun. Be a Garter snake and stretch out, feeling the warmth from the sun!

Bird Call 	Hawk 	Sagebrush 
Madrone 	FREE SQUARE 	Flower 
Rabbit 	Snake 	Spiderweb 



SCRUBLAND/CHAPARRAL

FIRE ECOLOGY WORD CHOICE

Look at the Answer Key!

Fire is a natural part of all of these ecosystems, but especially chaparral. Once every 30-150 years, a fire will sweep through and completely change the landscape. Many seeds of chaparral plants need fire in order to germinate, or start growing! With fire, new plants have a chance to survive in this ecosystem.

A _____ fire is more intense, and burns away the very tops of trees and bushes. While most ecosystems want to avoid this kind of fire, it is needed in the chaparral to provide open spaces for young plants.

_____ buildup increases the risk of a catastrophic wildfire, uncontrollable by our fire crews. Drought and overcrowding due to lack of occasional fire adds dry, dead plants that are easy to burn.

A _____ burn is done intentionally by trained forest managers to help the landscape regenerate. It also makes sure that there isn't too much fuel buildup to produce an out of control fire.

The red-colored _____ is an example of a fire-adapted plant. When its seeds, buried safely underground by a critter like a squirrel, feel intense heat above, they germinate!

After a fire burns away the brush, it leaves behind ____, which can be full of newly released nutrients for the baby plants to use!



Word Bank

Fuel

Manzanita

Crown

Prescribed

Ash



SCRUBLAND/CHAPARRAL

ANIMAL DINER

Look at the Answer Key!

It is dinner time at the Chaparral Animal Diner and the critters are hungry! Help them find a good, healthy meal. Write the number of the meal on the animal's plate.

Menu

- #1: Stew** - fresh mix of mice, voles, and rabbits with secret snake seasoning
- #2: House Salad** - mixed greens served with twigs, buds, nuts and fruit
- #3: Low Country Boil** - crayfish and frogs with a side of mixed berries, nuts, and grapes
- #4: Trail Mix** - mostly seeds, mixed with Toyon berries, insects, and leaves.
- #5: Roast** - a single rodent, slow roasted for about 5 days.
- #6: Salsa** - assorted insects, with different crunky textures and levels of spice
- #7: Sandwich** - peanut butter and jam on multi-grain bread

Red-Tailed Hawk



Gray fox



Mule Deer



California Quail



Western Fence Lizard



Ranger



Garter Snake

